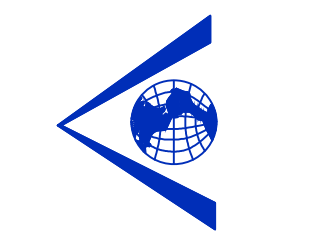


Revision	Date	Description

Owner:  
**Harbor Heights Investors L.P.**  
 #2 Horizon Court • Heath, Texas 75032 • 469-772-9400

**Trend Tower at the Harbor**  
 Rockwall, Texas

~ Civil Engineer ~  
**F.C. CUNY CORPORATION**  
 #2 Horizon Court • Heath, Texas 75032 • (469) 402-7700  
 Texas Registered Engineering Firm F-7449

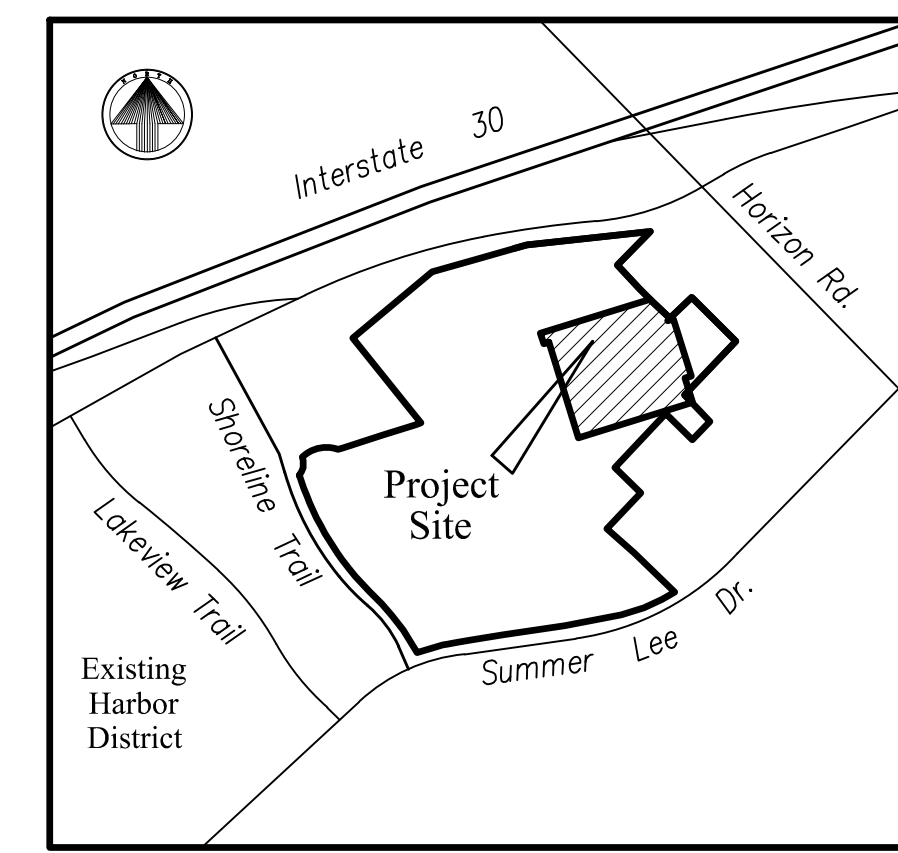


05/09/2014  
  
 Cameron A. Slown

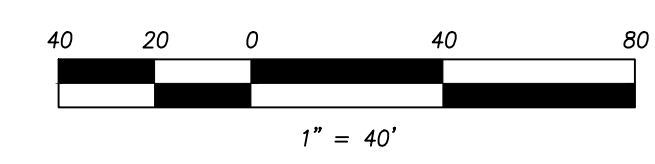
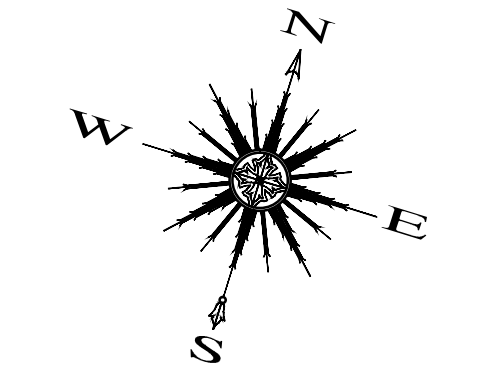
Drawn By: F.C. CUNY  
 Checked By: F.C. CUNY  
 Date: 05/12  
 Project No: -

Sheet Title:  
**Paving Plan**

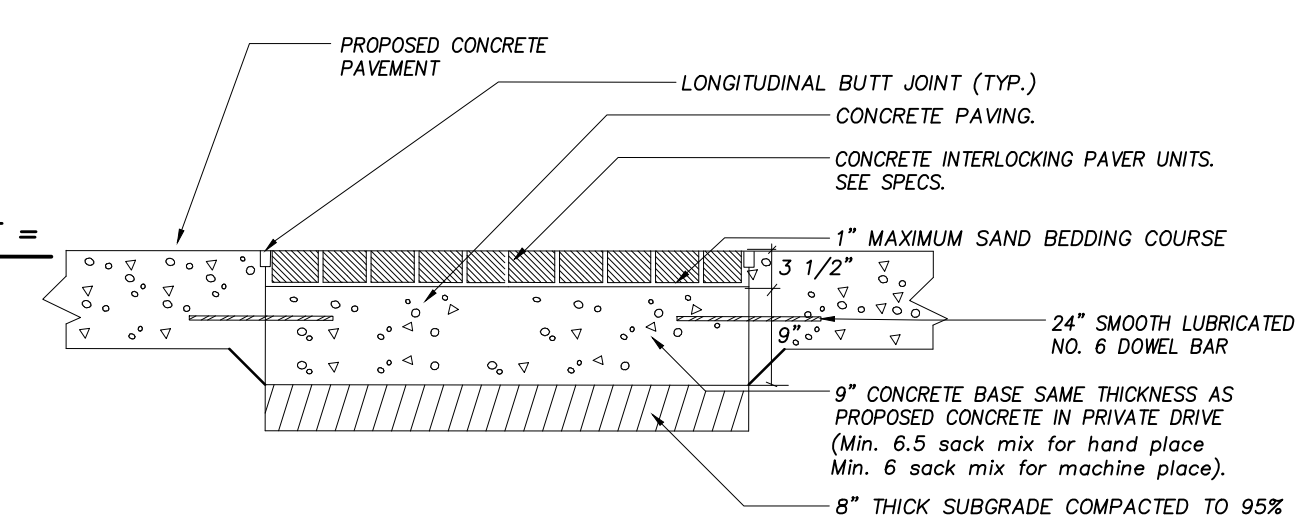
Scale: 1"=40'  
 Sheet No: 5 of 11



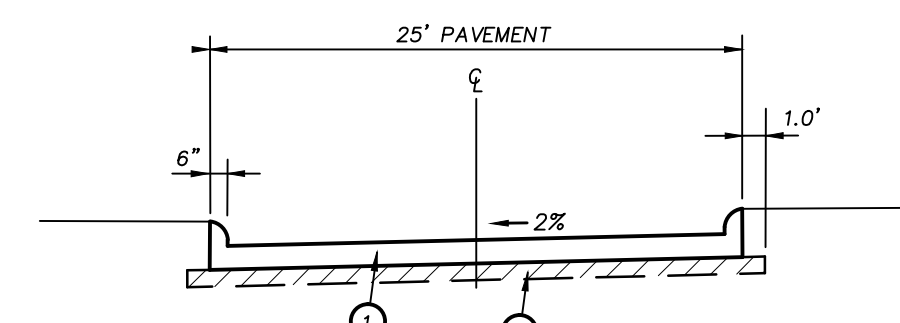
**LOCATION MAP**



**CAUTION EXISTING UTILITIES !!!**  
 EXISTING UTILITIES AND UNDERGROUND FACILITIES INDICATED ON THESE PLANS HAVE BEEN LOCATED FROM REFERENCE INFORMATION. IT SHALL BE THE RESPONSIBILITY OF THE CONTRACTOR TO VERIFY BOTH HORIZONTALLY AND VERTICALLY THE LOCATION OF ALL EXISTING UTILITIES AND UNDERGROUND FACILITIES PRIOR TO CONSTRUCTION, TO TAKE THE NECESSARY PRECAUTIONS IN ORDER TO PROTECT ALL FACILITIES ENCOUNTERED. THE CONTRACTOR SHALL PRESERVE AND PROTECT ALL EXISTING UTILITIES FROM DAMAGE DURING CONSTRUCTION.



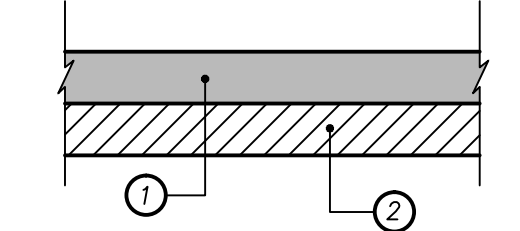
**BRICK PAVER SECTION**  
 NTS



**PRIVATE DRIVE SECTION A-A**  
 NTS

- ① 9"-3600 PSI Class "C" concrete pavement with No. 3 bars 24" on centers both ways. (Min. 6.5 sack mix for hand place, Min. 6 sack mix for machine place).
- ② Subgrade shall be 8" thick and compacted to a density not less than 96% at 0%-3% of optimum moisture content.

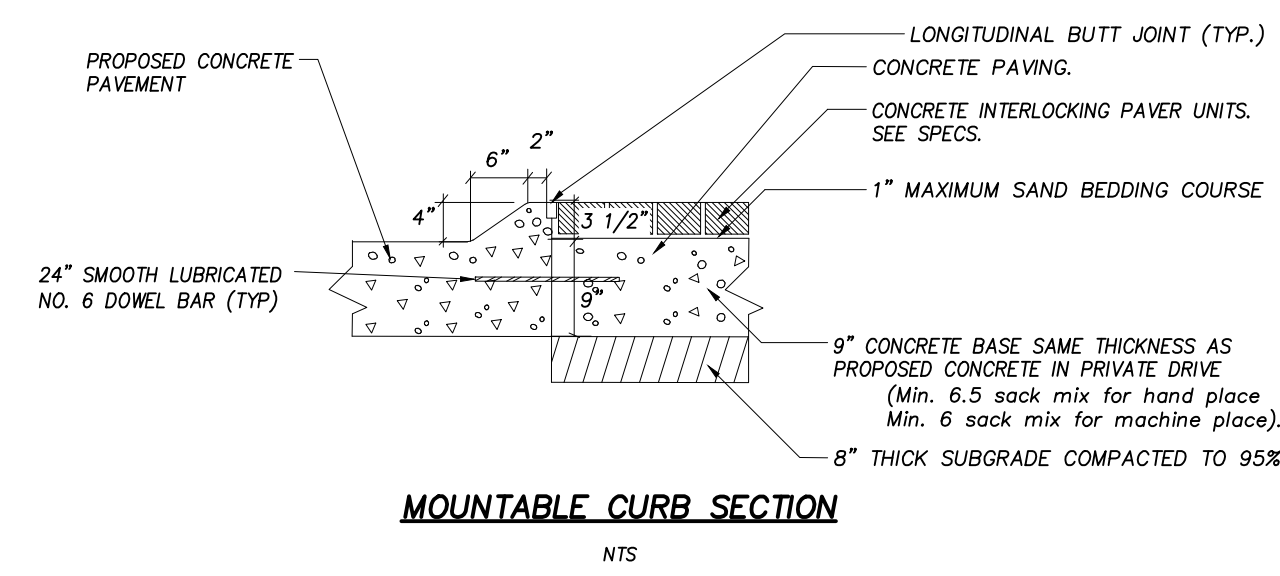
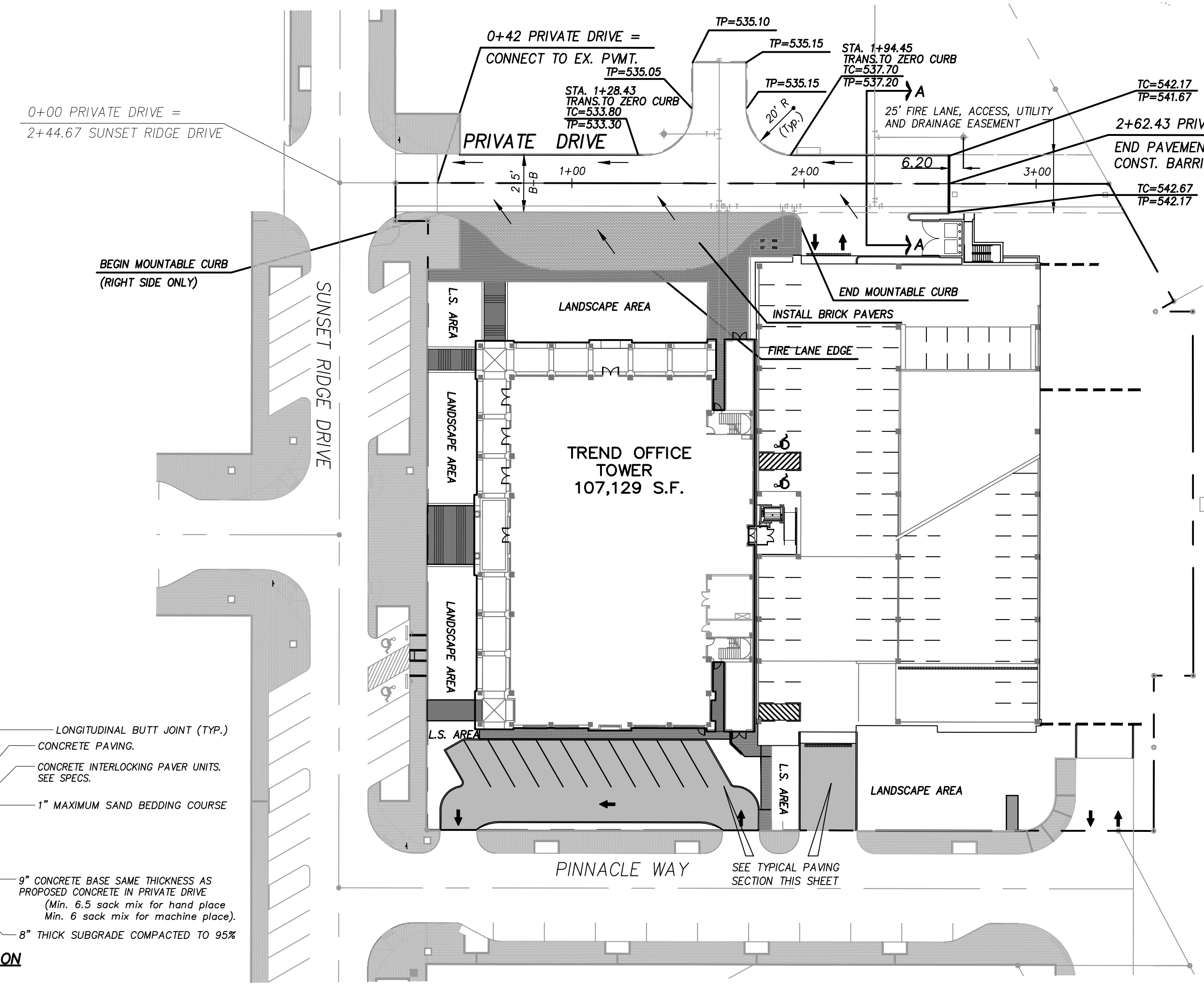
Notes:  
 1. All construction joints & rebar to be in conformance with the City of Rockwall Specifications and Standards.



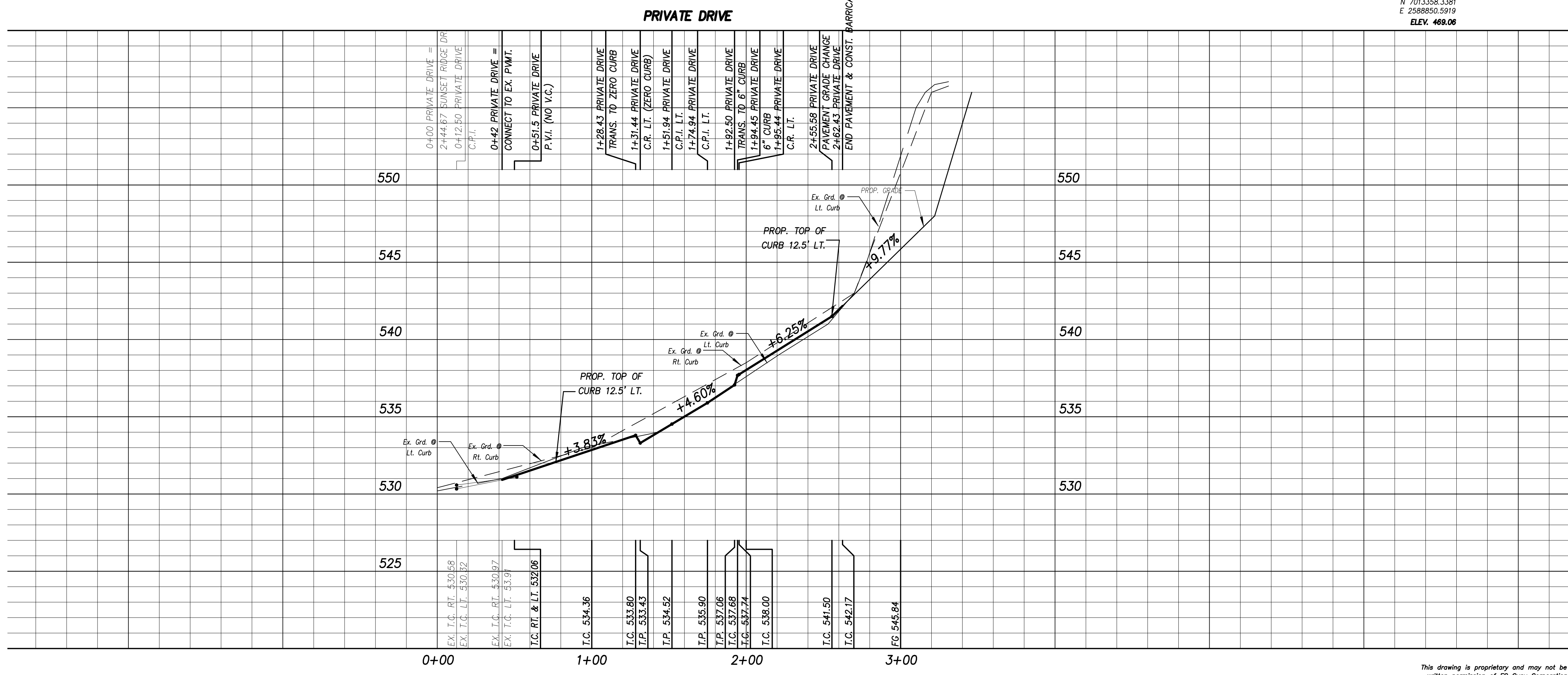
**TYPICAL PAVEMENT SECTION**  
 NTS

- ① 6"-3600 PSI Class "C" concrete pavement with No. 3 bars 24" on centers both ways. (Min. 6.5 sack mix for hand place, Min. 6 sack mix for machine place).
- ② Subgrade shall be 8" thick and compacted to a density not less than 96% at 0%-3% of optimum moisture content.

**BENCHMARK:**  
 CITY OF ROCKWALL MONUMENT, N.W. CORNER OF INLET ON LAKEVIEW TRAIL AT SUMMER LEE.  
 N 7013358.3381  
 E 2588850.5919  
**ELEV. 469.06**



**MOUNTABLE CURB SECTION**  
 NTS



SCALE: H: 1"=40'  
 V: 1"=4'

This drawing is proprietary and may not be copied or used in any way without the written permission of FC Cuny Corporation - © Copyright - FC Cuny Corporation

RECORD DRAWINGS