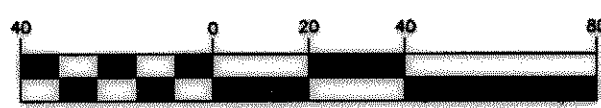
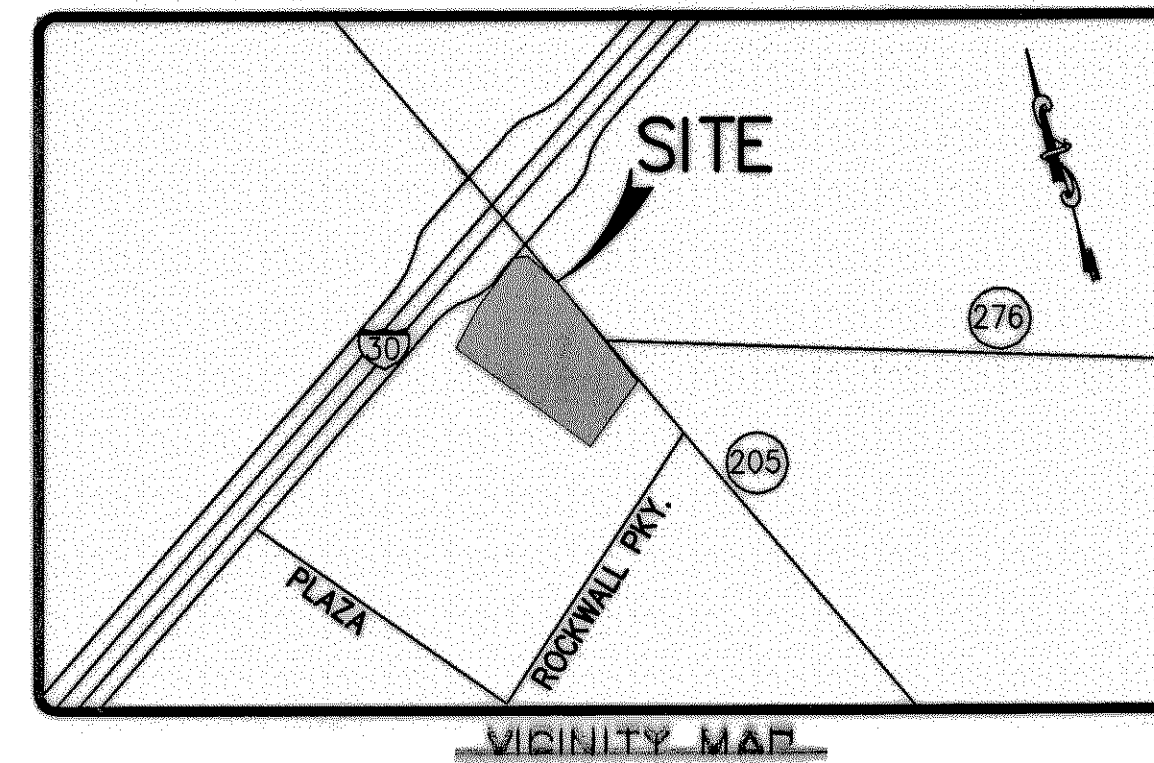
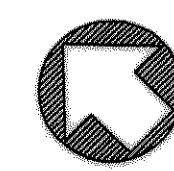


GRAPHIC SCALE

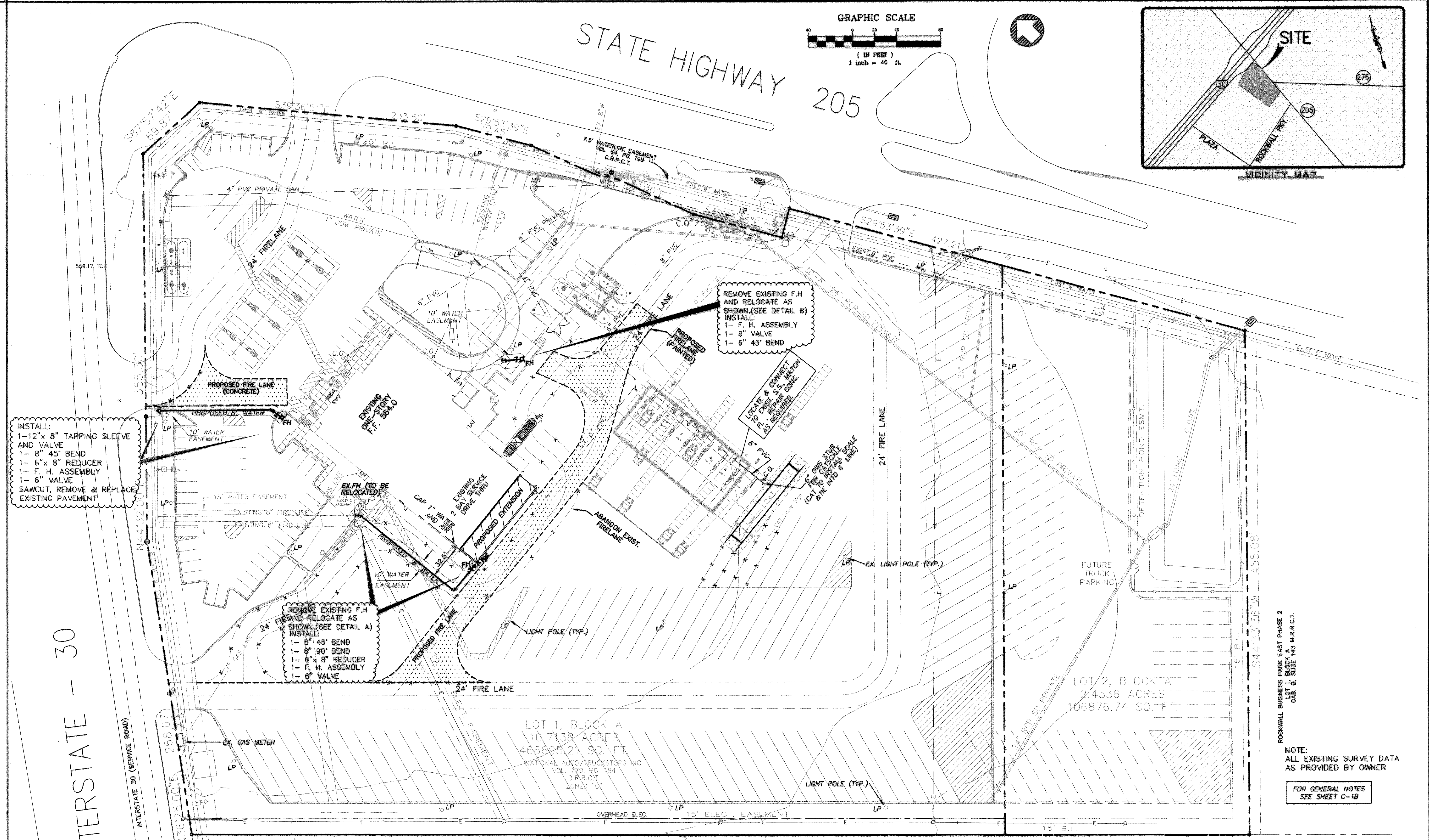


(IN FEET)
1 inch = 40 ft.



STATE HIGHWAY 205

INTERSTATE - 30



INSTALL:
1- 12"x 8" TAPPING SLEEVE AND VALVE
1- 8" 45° BEND
1- 6"x 8" REDUCER
1- F. H. ASSEMBLY
1- 6" VALVE
SAWCUT, REMOVE & REPLACE EXISTING PAVEMENT

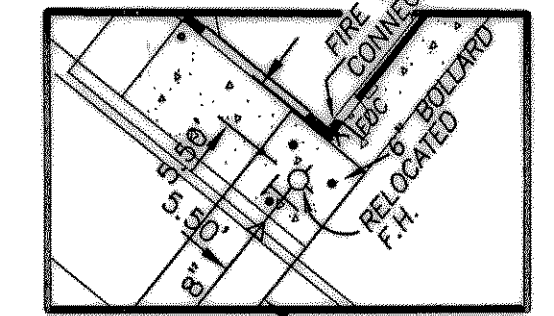
REMOVE EXISTING F.H. AND RELOCATE AS SHOWN (SEE DETAIL A)
INSTALL:
1- 8" 45° BEND
1- 8" 90° BEND
1- 6"x 8" REDUCER
1- F. H. ASSEMBLY
1- 6" VALVE

REMOVE EXISTING F.H. AND RELOCATE AS SHOWN (SEE DETAIL B)
INSTALL:
1- F. H. ASSEMBLY
1- 6" VALVE
1- 6" 45° BEND

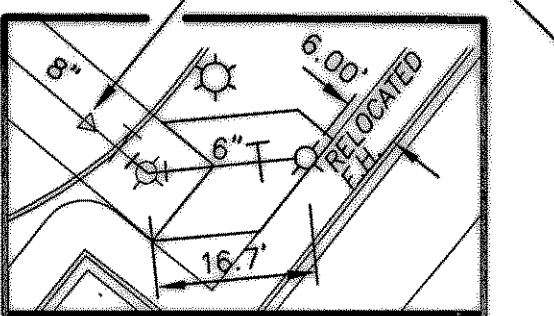
LOCATE & CONNECT TO EXIST. S. WATER F. H. REPAIR CONC. AS REQUIRED

6" PVC 3" C.O.
6" PVC STUB OR CATCHER SCALE (CUT TO INSTALL SCALE & TIE INTO 6" LINE)

REMOVE EXISTING F.H. AND RELOCATE AS SHOWN (SEE DETAIL A)
INSTALL:
1- 8" 45° BEND
1- 8" 90° BEND
1- 6"x 8" REDUCER
1- F. H. ASSEMBLY
1- 6" VALVE



DETAIL A



DETAIL B

NOTE: EXTEND THE 8-INCH FIRE HYDRANT LINE IF PAVEMENT REMOVAL IS NOT REQUIRED. IF CONCRETE REMOVAL IS REQUIRED TO ACCESS THE REDUCER, EXTENSION OF THE 6-INCH LINE IS ACCEPTABLE.

ROCKWALL BUSINESS PARK EAST PHASE I
LOT 1, BLOCK A
CAB. B, SLIDE 37
M.R.R.C.T.

RECORD DRAWING

REVISED TO REFLECT KNOWN CHANGES MADE DURING CONSTRUCTION.
DATE 11/09/04

DRAINAGE AREA CALCULATIONS

N44°55'43"W 958.27'

LOT 1, BLOCK A
10.7138 ACRES
466695.21 SQ. FT.
NATIONAL AUTO/TRUCKSTOPS INC.
VOL. 779, PG. 184
D.R.R.C.T.
ZONED "C"

LOT 2, BLOCK A
2.4536 ACRES
106876.74 SQ. FT.

NOTE: ALL EXISTING SURVEY DATA AS PROVIDED BY OWNER

FOR GENERAL NOTES SEE SHEET C-1B

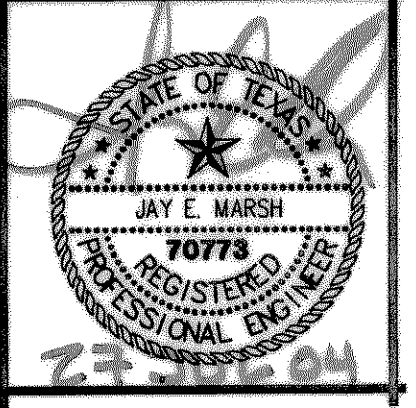
- NEW FIRE LANE
- CONCRETE PAVEMENT
- ABANDONED FIRELANE
- PROPOSED FIRELANE

BENCHMARK:
TOP FLANGE BOLT ON FIRE HYDRANT BETWEEN "OPEN & ARROW" AT NORTHWEST CORNER OF I-30 AND GREENCREST BLVD. ELEVATION 570.25

PATE ENGINEERS
8150 BROOKSHIRE DRIVE
DALLAS, TEXAS 75247
TEL. (214) 357-2881
FAX (214) 357-2885
CEN. 07870402

TRAVEL CENTERS OF AMERICA - Protolite
Interstate 30 at State Highway 205
Rockwall, Texas 75087
TravelCenters of America

PROJECT NO: TAR2TX



REVISIONS:

CHECKED BY: JEM

Sheet: UTILITY PLAN
C-4
Of: AUGUST 11, 2004

C:\patt\dwg\11/09/04\33713.PLA, Mitchell