

DEMOLITION AREA NOTES

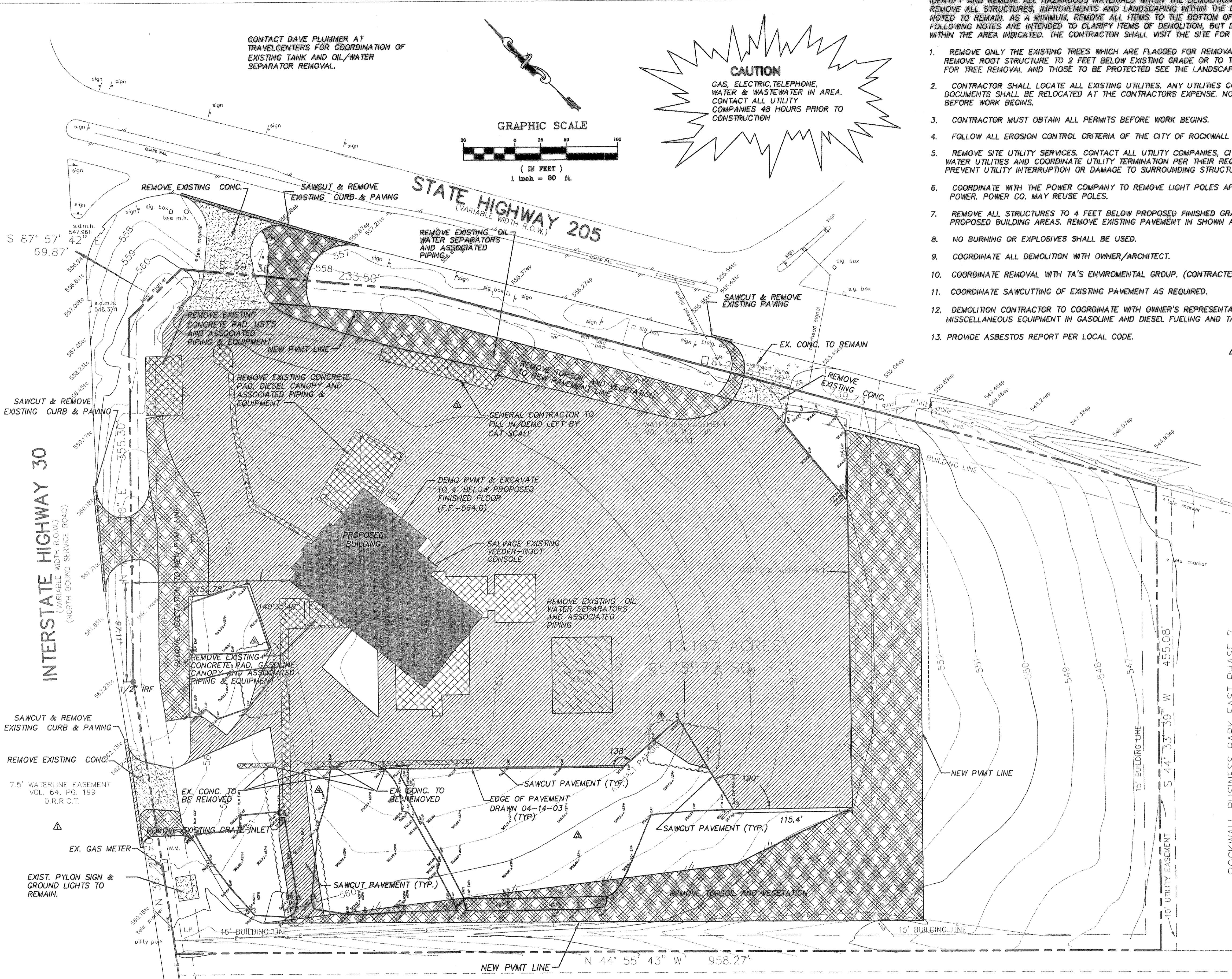
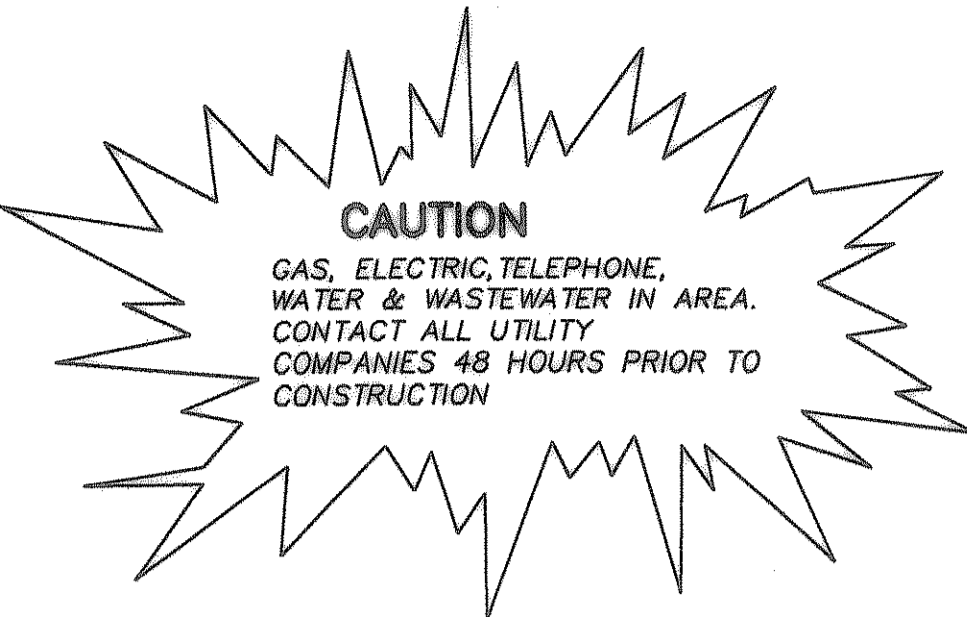
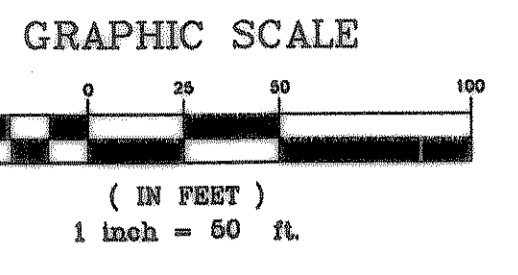
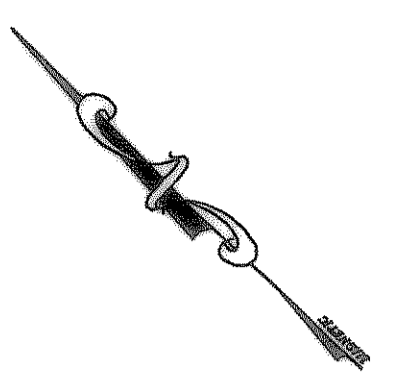
IDENTIFY AND REMOVE ALL HAZARDOUS MATERIALS WITHIN THE DEMOLITION LIMITS, AND DISPOSE AS REQUIRED. REMOVE ALL STRUCTURES, IMPROVEMENTS AND LANDSCAPING WITHIN THE DEMOLITION LIMITS, EXCEPT THOSE ITEMS NOTED TO REMAIN. AS A MINIMUM, REMOVE ALL ITEMS TO THE BOTTOM OF PROPOSED PAVEMENT SUBGRADE. THE FOLLOWING NOTES ARE INTENDED TO CLARIFY ITEMS OF DEMOLITION, BUT DO NOT LIMIT THE SCOPE OF ALL ITEMS WITHIN THE AREA INDICATED. THE CONTRACTOR SHALL VISIT THE SITE FOR REVIEW OR EXISTING CONDITIONS.

- 1. REMOVE ONLY THE EXISTING TREES WHICH ARE FLAGGED FOR REMOVAL BY THE LANDSCAPE ARCHITECT. REMOVE ROOT STRUCTURE TO 2 FEET BELOW EXISTING GRADE OR TO THE BOTTOM OF PAVEMENT SUBGRADE. FOR TREE REMOVAL AND THOSE TO BE PROTECTED SEE THE LANDSCAPE PLAN
2. CONTRACTOR SHALL LOCATE ALL EXISTING UTILITIES. ANY UTILITIES CONFLICTING WITH THESE CONSTRUCTION DOCUMENTS SHALL BE RELOCATED AT THE CONTRACTORS EXPENSE. NOTIFY UTILITY COMPANY OF ANY CONFLICT BEFORE WORK BEGINS.
3. CONTRACTOR MUST OBTAIN ALL PERMITS BEFORE WORK BEGINS.
4. FOLLOW ALL EROSION CONTROL CRITERIA OF THE CITY OF ROCKWALL AND THESE PLANS.
5. REMOVE SITE UTILITY SERVICES. CONTACT ALL UTILITY COMPANIES, CITY OF ROCKWALL PUBLIC WORKS AND WATER UTILITIES AND COORDINATE UTILITY TERMINATION PER THEIR REQUIREMENTS. USE EXTREME CARE TO PREVENT UTILITY INTERRUPTION OR DAMAGE TO SURROUNDING STRUCTURES OR UTILITIES.
6. COORDINATE WITH THE POWER COMPANY TO REMOVE LIGHT POLES AFTER POWER CO. HAS DISCONNECTED POWER. POWER CO. MAY REUSE POLES.
7. REMOVE ALL STRUCTURES TO 4 FEET BELOW PROPOSED FINISHED GRADES IN PAVEMENT AND PROPOSED BUILDING AREAS. REMOVE EXISTING PAVEMENT IN SHOWN AREAS.
8. NO BURNING OR EXPLOSIVES SHALL BE USED.
9. COORDINATE ALL DEMOLITION WITH OWNER/ARCHITECT.
10. COORDINATE REMOVAL WITH TA'S ENVIROMENTAL GROUP. (CONTRACTED BY TA SEPERATELY.)
11. COORDINATE SAWCUTTING OF EXISTING PAVEMENT AS REQUIRED.
12. DEMOLITION CONTRACTOR TO COORDINATE WITH OWNER'S REPRESENTATIVE FOR SALVAGE OF DISPENSERS, AND MISCELLANEOUS EQUIPMENT IN GASOLINE AND DIESEL FUELING AND TANK AREA'S.
13. PROVIDE ASBESTOS REPORT PER LOCAL CODE.

LEGEND

- SEE FUEL DEMO PLAN
DEMOLISH EXISTING ASPHALT
DEMOLISH EXISTING BUILDING
REMOVE EXISTING CONCRETE
REMOVE TOP SOIL & VEGETATION

CONTACT DAVE PLUMMER AT TRAVELCENTERS FOR COORDINATION OF EXISTING TANK AND OIL/WATER SEPARATOR REMOVAL.



- BUILDING DEMOLITION NOTES
1. THE CONTRACTOR SHALL FIELD VERIFY AND BID COMPLETE DEMOLITION OF THE FACILITY AS IT CURRENTLY EXISTS AND AS INDICATED ON THE DOCUMENTS AND SPECIFICATIONS.
2. ALL DEMOLITION WORK SHALL BE PERFORMED IN ACCORDANCE WITH STATE AND LOCAL REGULATIONS - SECURE REQUIRED DEMOLITION PERMITS - ARRANGE WITH OWNER AND/OR APPROPRIATE UTILITIES FOR SERVICE SHUTOFFS BEFORE BEGINNING DEMOLITION OPERATIONS. (IDENTIFY ALL EXISTING ITEMS OF WORK SCHEDULED TO REMAIN OR TO BE SALVAGED FOR REUSE).
3. COORDINATE ALL DEMOLITION OPERATIONS WITH OWNER. PROTECT EXISTING ITEMS TO REMAIN.
4. ITEMS TO BE SALVAGED ARE TO BE PROVIDED AND CONFIRMED BY THE OWNER, LOCAL AUTHORITIES, OR UTILITIES AS APPROPRIATE - ALL ITEMS TO BE TURNED OVER TO THE OWNER, LOCAL AUTHORITIES, OR UTILITIES SHALL BE PROTECTED DURING DEMOLITION AND REMOVAL AND SHALL BE DELIVERED TO THE APPROPRIATE PARTY IN UNDAMAGED CONDITION.
5. ALL DEMOLISHED MATERIALS NOT SCHEDULED FOR SALVAGE AND REUSE, TO BECOME PROPERTY OF THE CONTRACTOR AND TO BE REMOVED AND DISPOSED OF IN ACCORDANCE WITH LOCAL LAW AND REGULATIONS.
6. ALL ITEMS SCHEDULED TO BE SALVAGED FOR REUSE SHALL BE REMOVED WITH CARE AND STORED AND PROTECTED FROM DAMAGE UNTIL SALVAGED ITEMS ARE INCORPORATED IN THE NEW WORK - IT SHALL BE THE CONTRACTOR'S RESPONSIBILITY TO REPLACE AND/OR RESTORE ANY ITEMS FOR SALVAGE AND REUSE THAT ARE DAMAGED DURING THE COURSE OF CONTRACT OPERATIONS - THE OWNER SHALL BE THE SOLE JUDGE OF SUITABILITY OF THESE SALVAGED ITEMS FOR REUSE IN THE WORK.
7. REUSE OF SALVAGED MATERIALS, NOT SPECIFICALLY SCHEDULED WILL BE AT THE DISCRETION OF THE OWNER - IN NO CASE SHALL SALVAGED MATERIALS BE INCORPORATED IN THE FUTURE WORK.
8. DEMOLISH THE SITE FACILITY STRUCTURES TO ALLOW CLEAR ACCESS FOR THE CONSTRUCTION OF THE NEW TERMINAL FACILITY AND FUEL ISLANDS.

ADDED/CHANGED NOTES

RECORD DRAWING
REVISED TO REFLECT KNOWN CHANGES MADE DURING CONSTRUCTION.
Robert L. Wright DATE 8-18-03

BENCHMARK: TOP FLANGE BOLT ON FIRE HYDRANT BETWEEN "OPEN & ARROW" AT NORTHWEST CORNER OF I-30 AND GREENCREST BLVD. ELEVATION 570.25

NOTE: ALL SITEWORK, DIMENSIONS, & ELEVATIONS ARE BASED ON SURVEY AS PROVIDED BY OWNER

NOTE: ALL CONSTRUCTION MUST FOLLOW CITY OF ROCKWALL STANDARD DETAILS AND SPECIFICATIONS

FOR GENERAL NOTES SEE SHEET C-1B

BENCHMARK: TOP FLANGE BOLT ON FIRE HYDRANT BETWEEN "OPEN & ARROW" AT NORTHWEST CORNER OF I-30 AND GREENCREST BLVD. ELEVATION 570.25

PATE ENGINEERS
8150 BROOKVIEW DRIVE
DALLAS, TEXAS 75247
TEL (214) 357-2981
FAX (214) 357-2985
JOB NO. 07670000

TRAVEL CENTERS OF AMERICA - Protolite
Interstate 30 at State Highway 205
Rockwall, Texas 75087

PROJECT NO: TAR21X

STATE OF TEXAS
ROBERT L. WRIGHT
REGISTERED PROFESSIONAL ENGINEER
35510
4-14-03

REVISIONS: CONSTRUCTION SET DOCUMENTS CONSTRUCTION BULLETIN #1 10/18/02
REVISIONS PER OWNER'S COMMENTS
REVISIONS PER CITY COMMENTS CONSTRUCTION BULLETIN #3 11/20/02
CHANGED NEW PVMT. LIMIT
CHANGED NEW PVMT. LIMIT

CHECKED BY: JEM

Sheet: DEMOLITION PLAN
CD-1.0
Of:
Date: SEPTEMBER 25, 2002