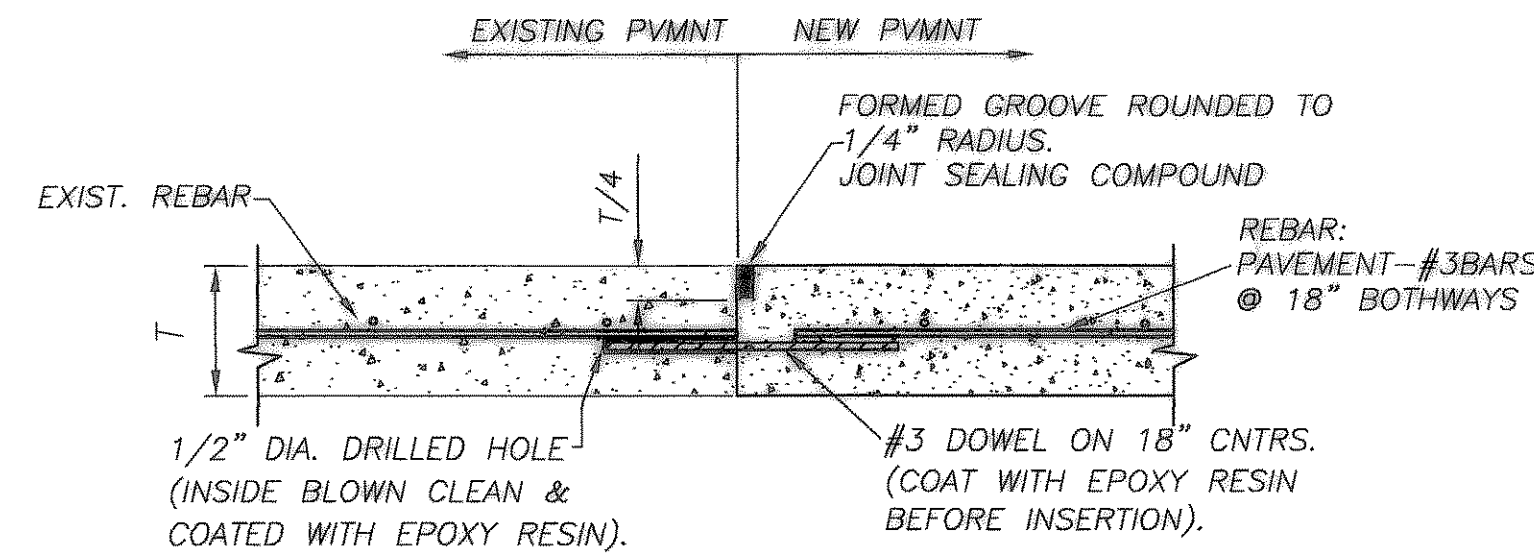
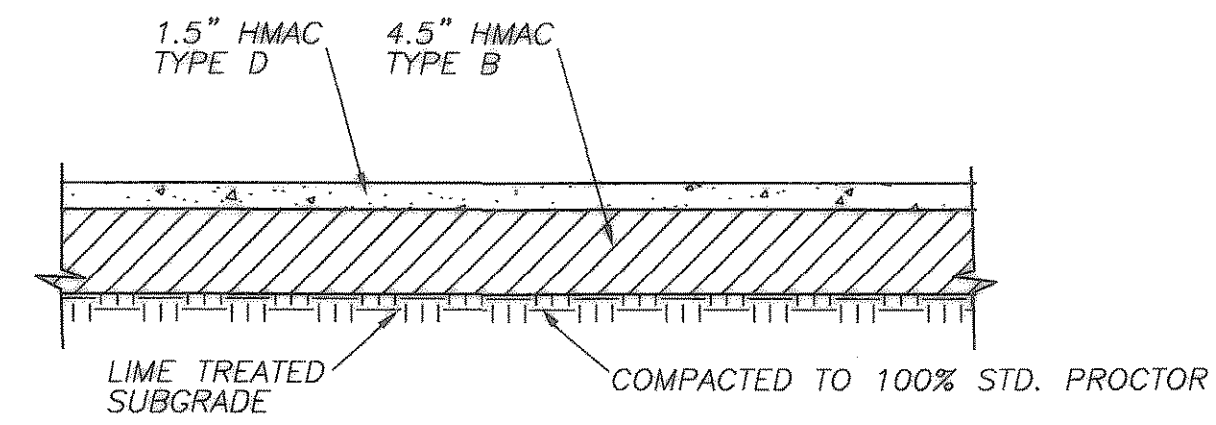


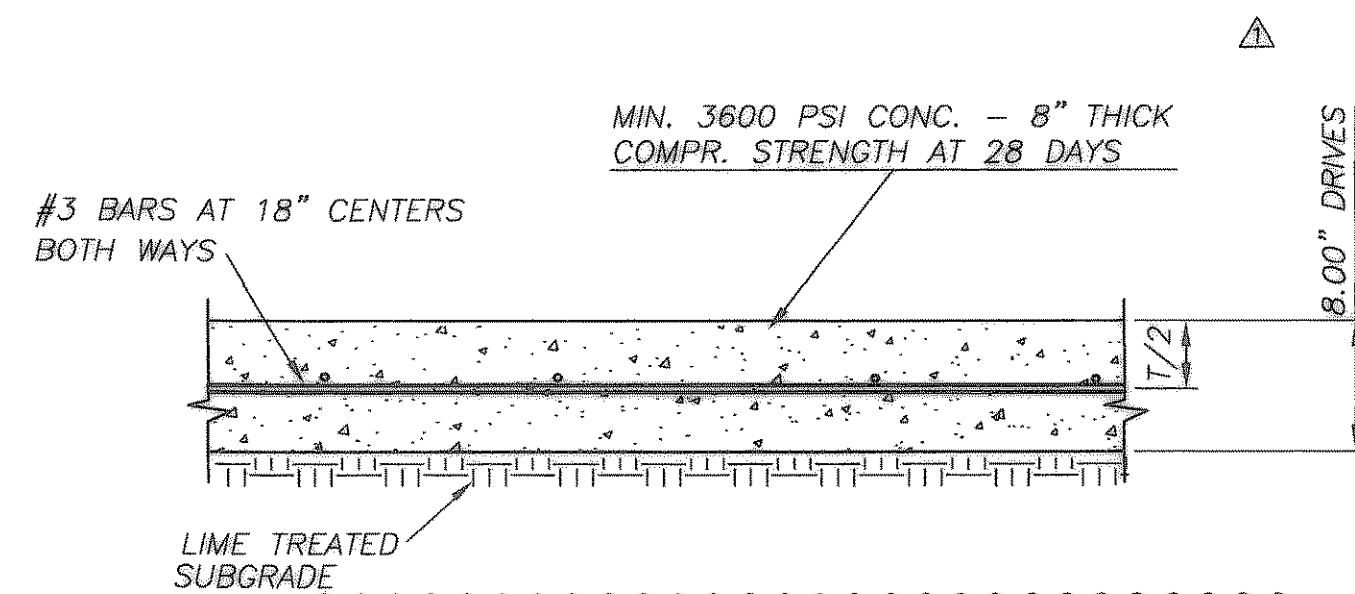
AUTOMOBILE AREA 6" CURB AND GUTTER
N.T.S.



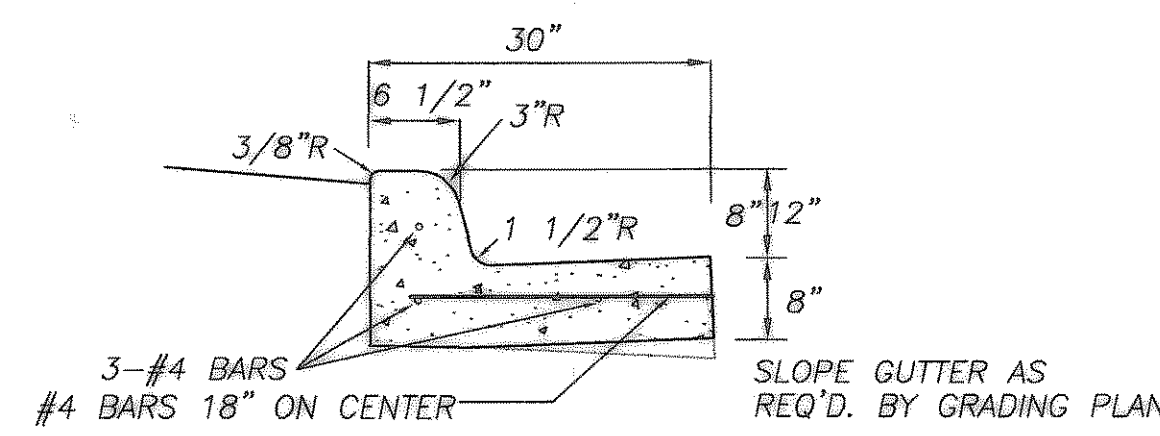
TYPICAL DOWEL DETAIL
N.T.S.



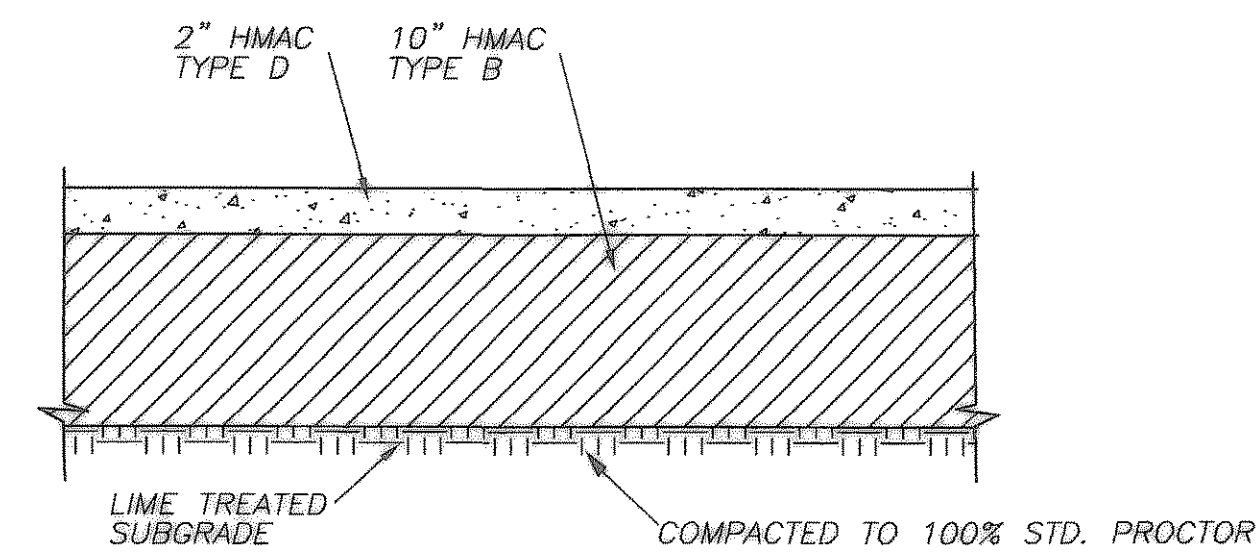
LIGHT DUTY PARKING AREA FOR CARS ASPHALT PAVEMENT
N.T.S.



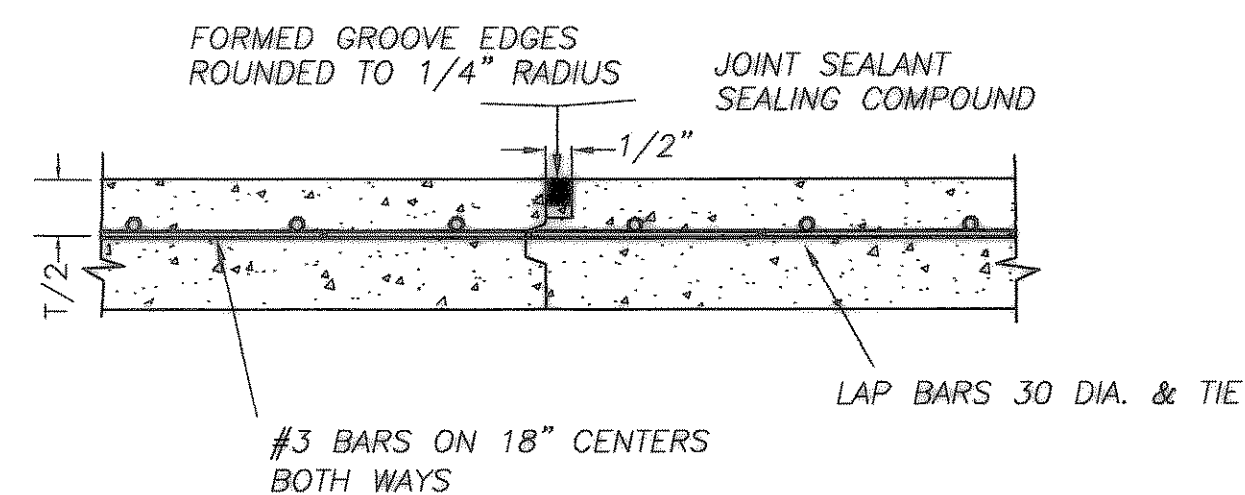
TYPICAL CONC. PAVEMENT SECTION FOR DRIVEWAYS
N.T.S.



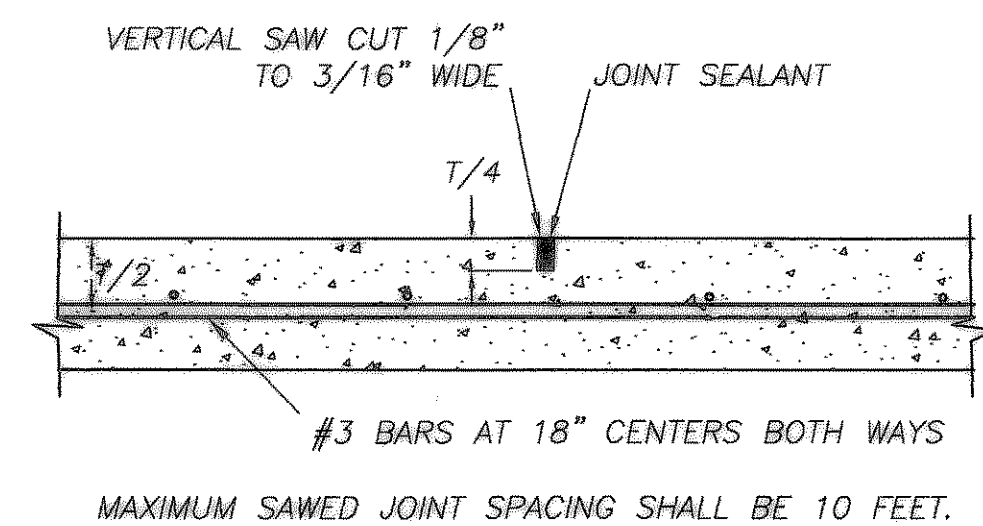
8" & 12" HIGH CURB AND GUTTER
N.T.S.



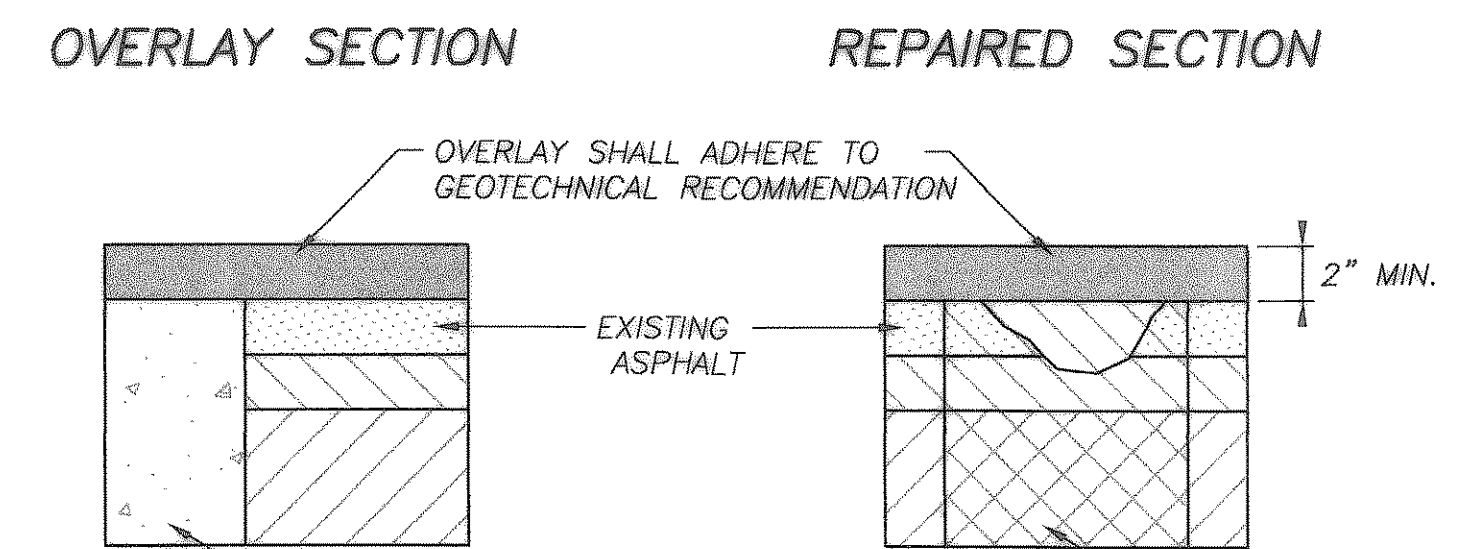
HEAVY TRAFFIC ASPHALT PAVEMENT
N.T.S.



CONC. PAVEMENT CONSTRUCTION JOINT
N.T.S.



SAWED DUMMY JOINT
N.T.S.

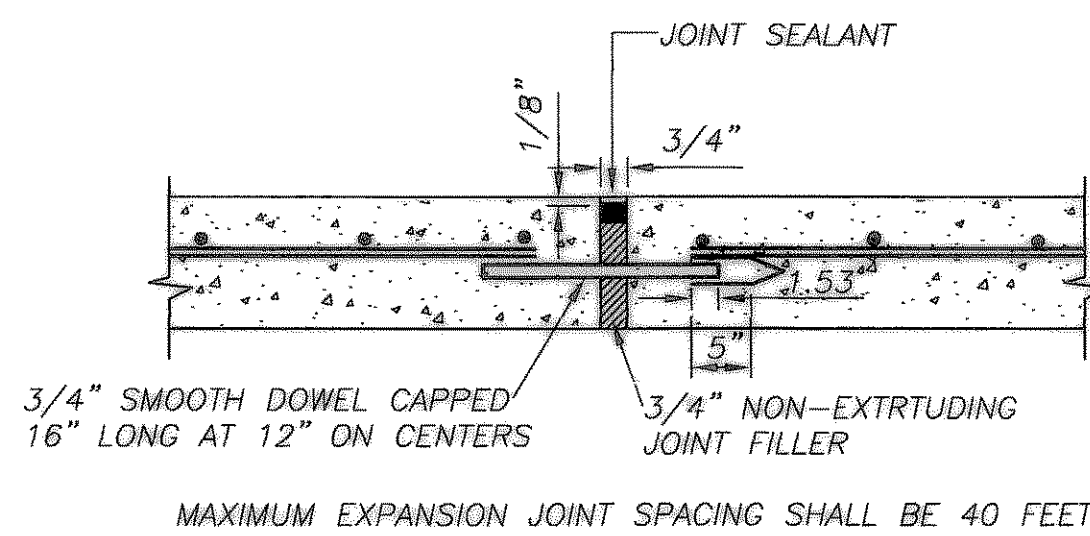


ASPHALT OVERLAY PAVEMENT
N.T.S.

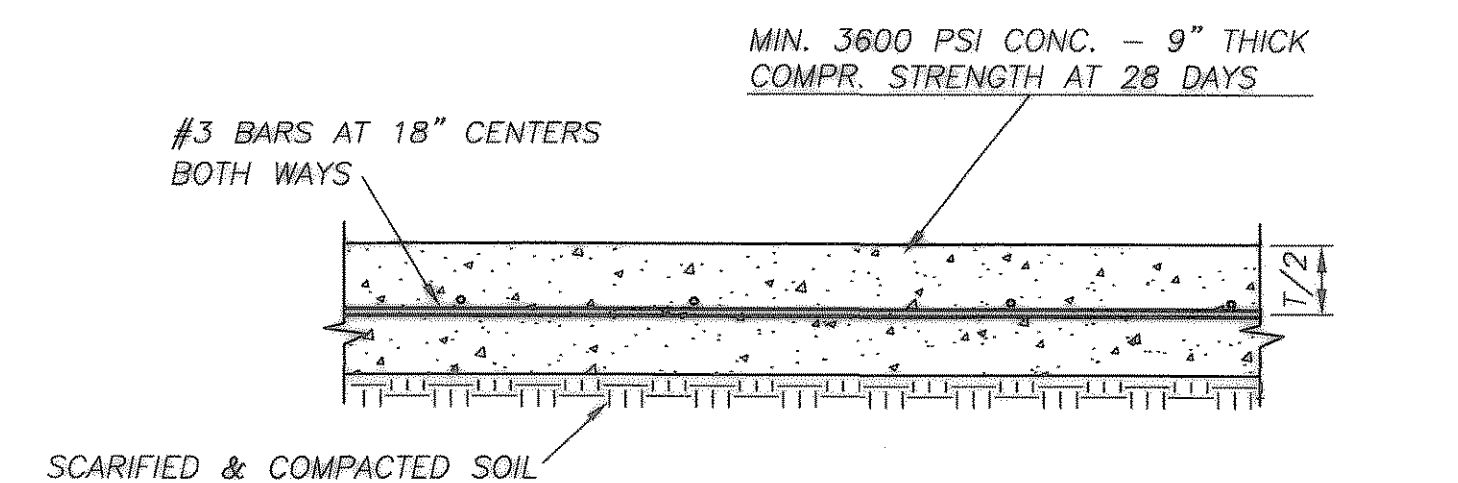
▲ ADDED/CHANGED NOTES
▲ ADDED NOTE

NOTE

1. ALL CONSTRUCTION SHALL FOLLOW THE STANDARD CONSTRUCTION DETAILS FOR THE CITY.
2. REFERENCE GENERAL NOTES FOR CONCRETE AND LIME
3. NO SAND SHALL BE USED UNDER PAVEMENT. ▲



EXPANSION JOINT
N.T.S.



TYPICAL CONC. PAVEMENT SECTION FOR FIRE LANE
N.T.S.

RECORD DRAWING
REVISED TO REFLECT ANY CHANGES MADE DURING CONSTRUCTION.
DATE 9/25/02

PROJECT NO: TAR2TX

JAY E. MARSH
REGISTERED PROFESSIONAL ENGINEER
07773
26 DEC 02

REVISIONS: CONSTRUCTION SET DOCUMENTS; CONSTRUCTION BULLETIN # 10/18/02

▲ REVISIONS PER OWNER'S COMMENTS
▲ REVISIONS PER CITY COMMENTS

CHECKED BY: JEM

Sheet:
CONSTRUCTION DETAILS
C-9
Of:
Date: SEPTEMBER 25, 2002