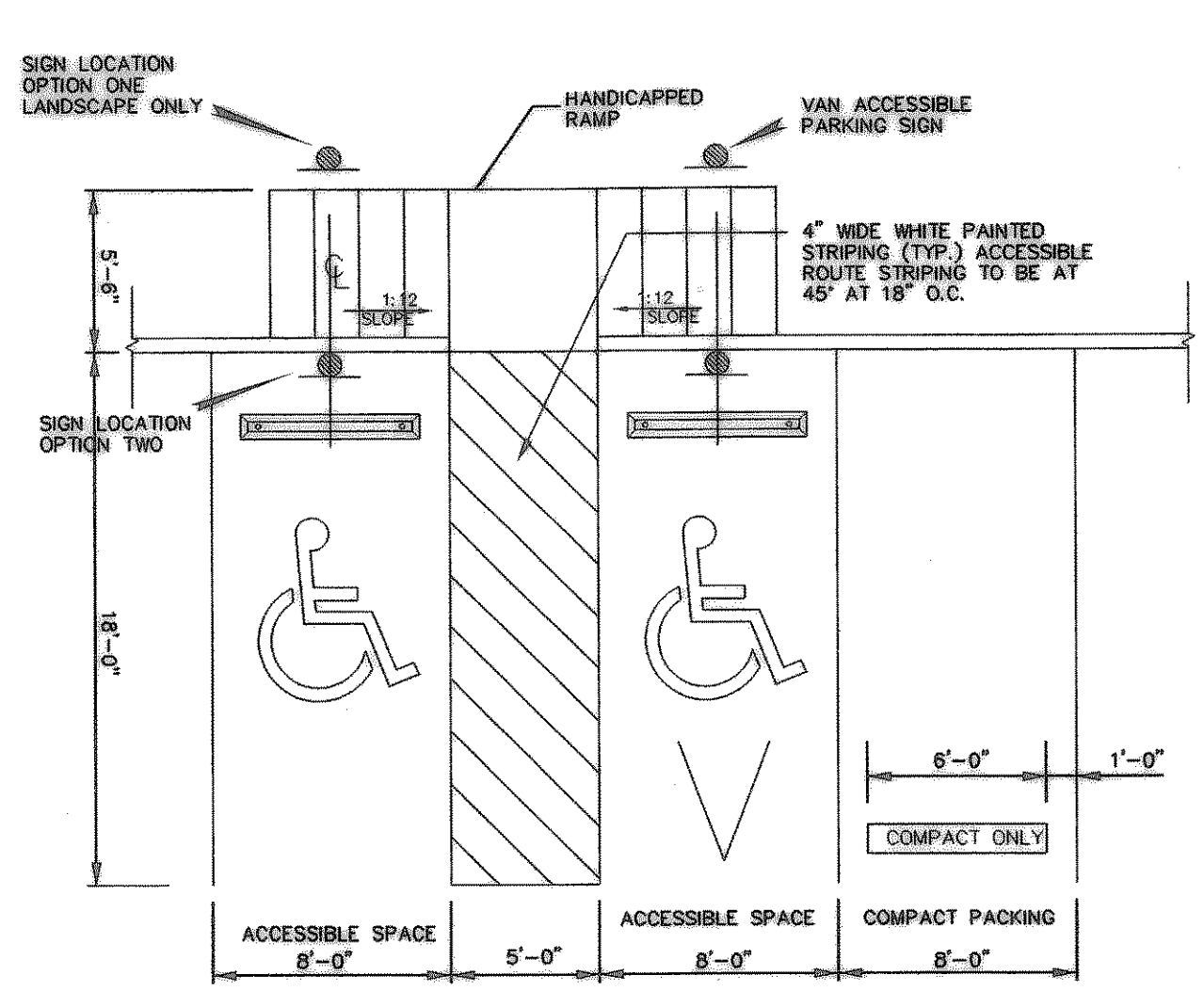
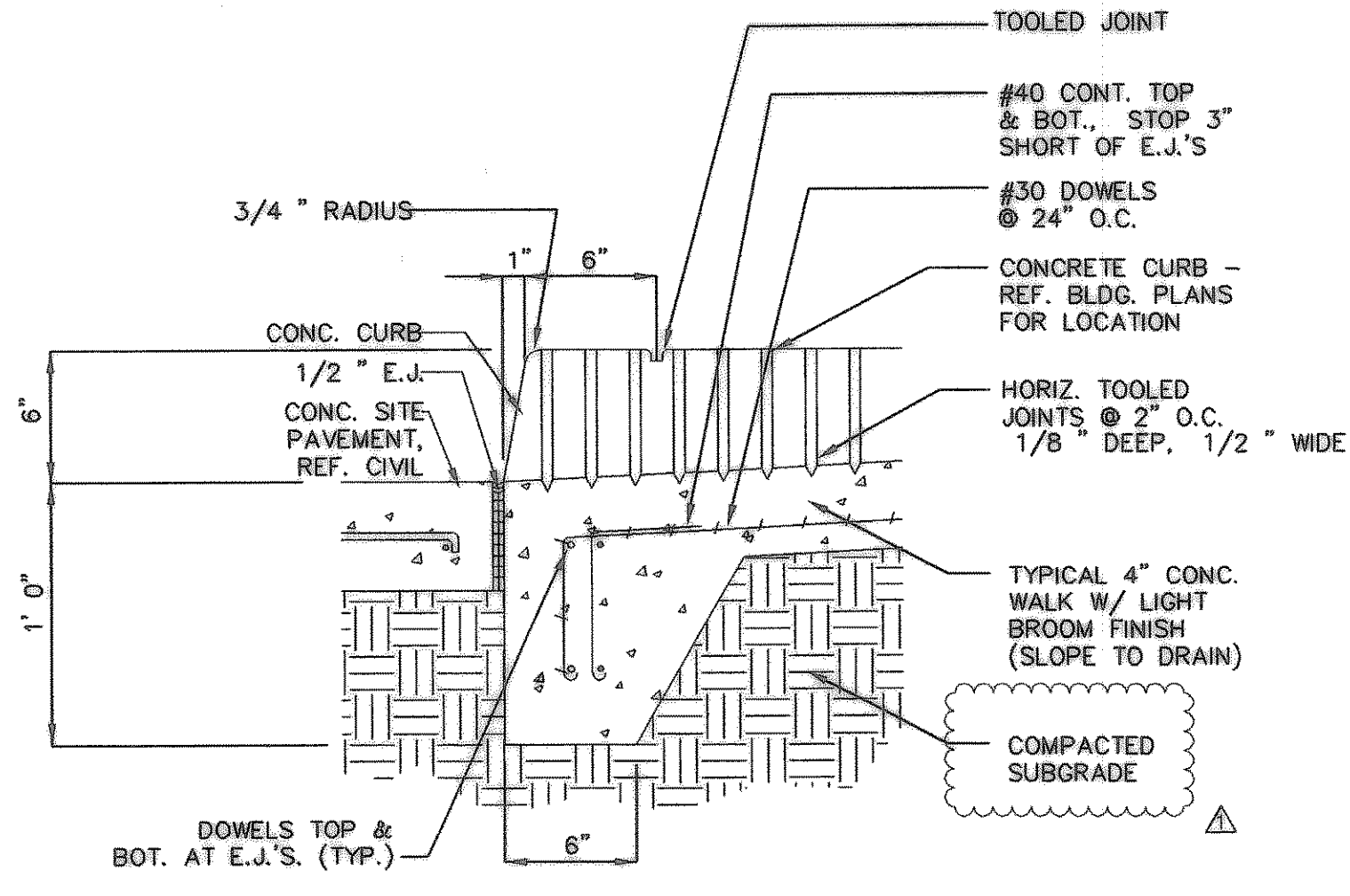


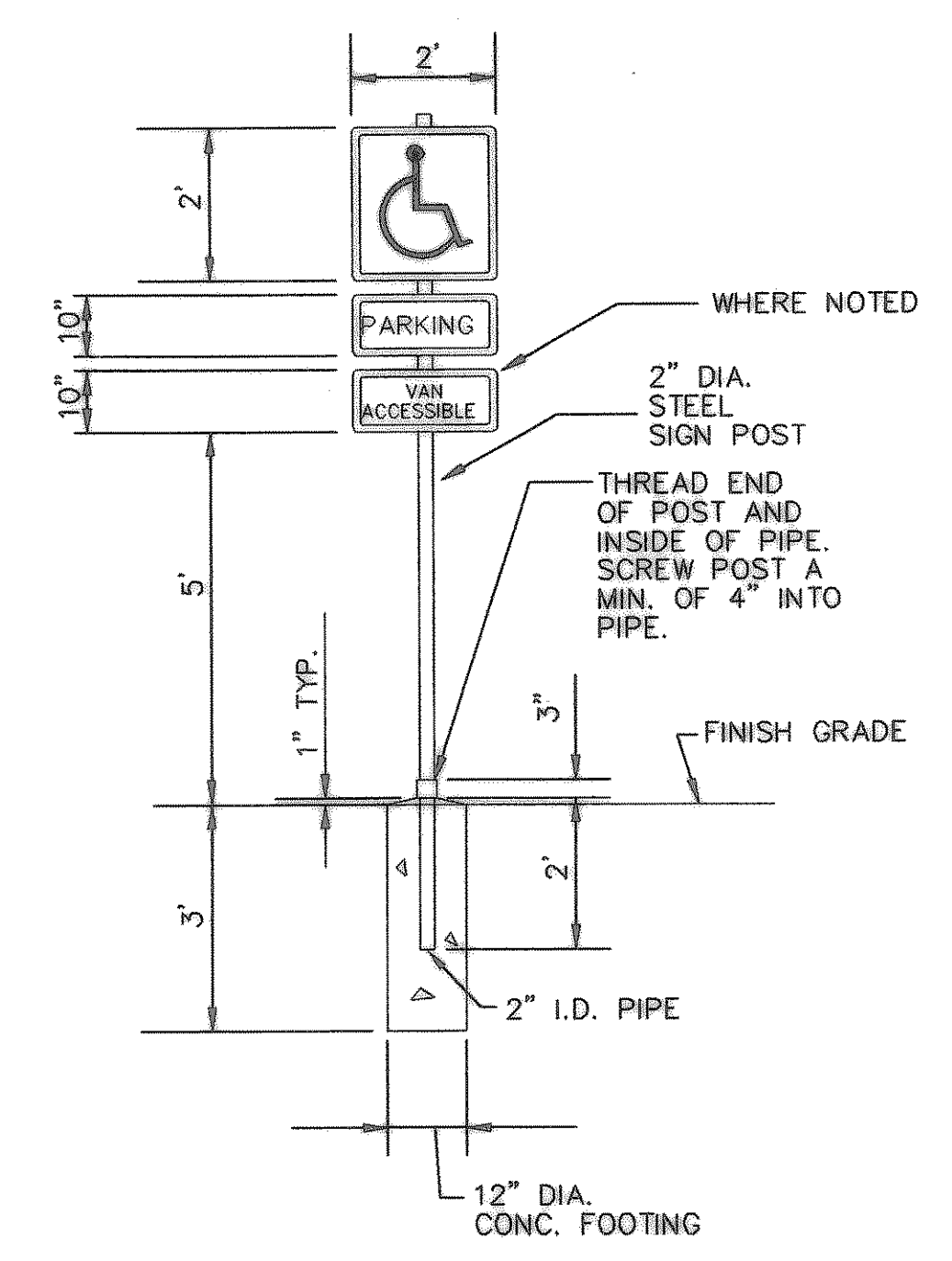
HANDICAP GRAPHICS DETAIL
N.T.S.



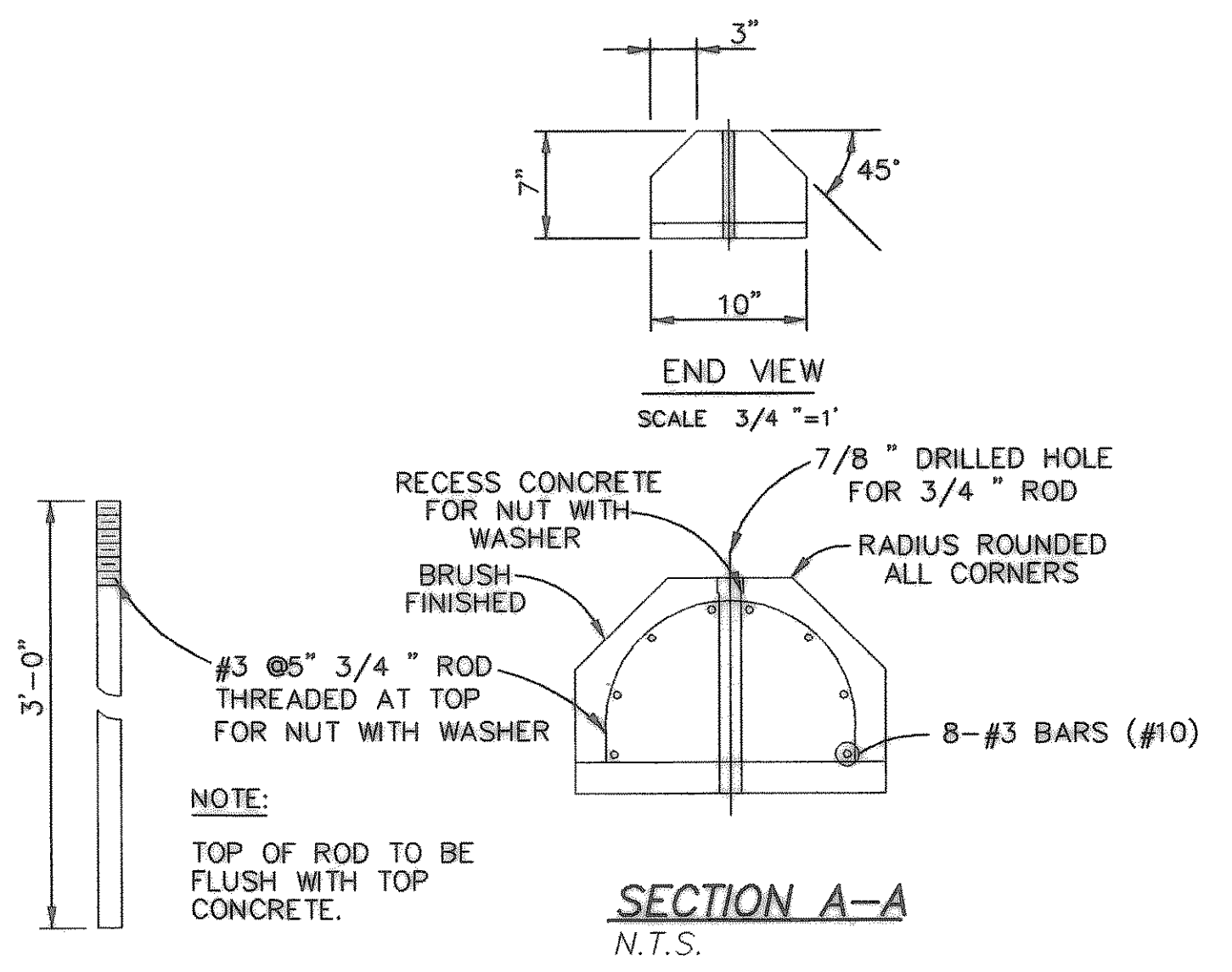
ACCESSIBLE PARKING SPACES
N.T.S.



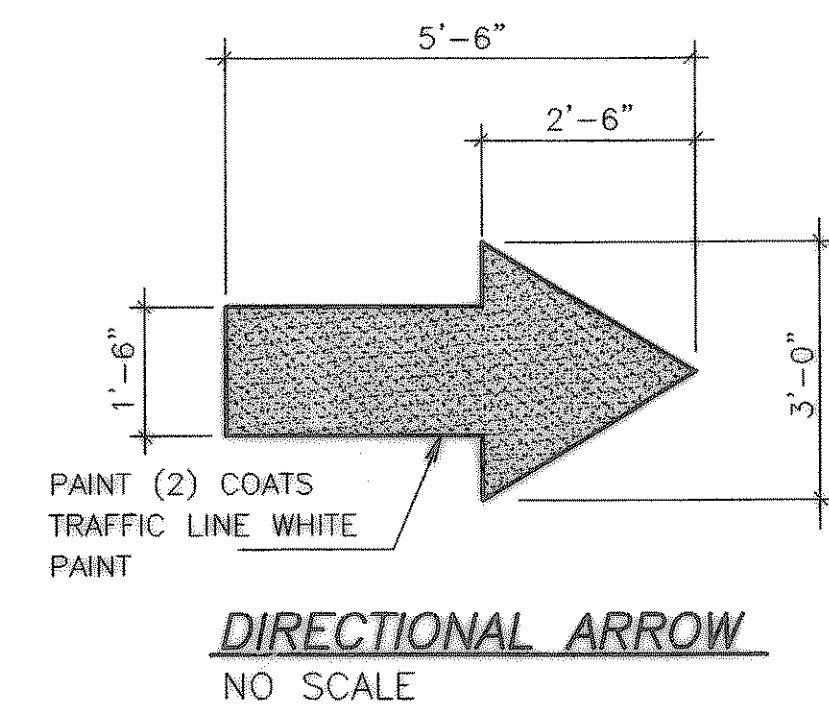
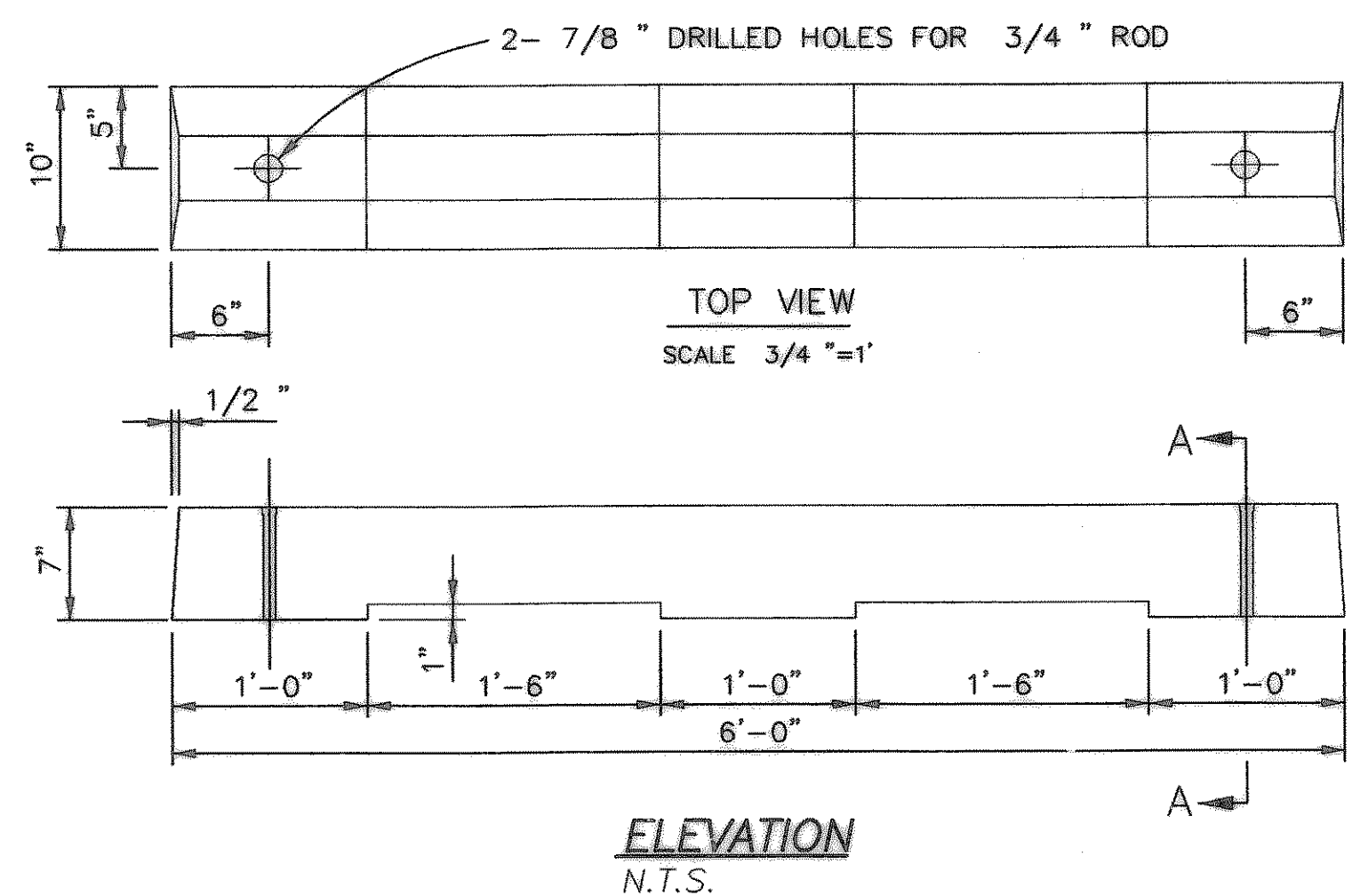
RAMP EDGE DETAIL (TYP.)
N.T.S.



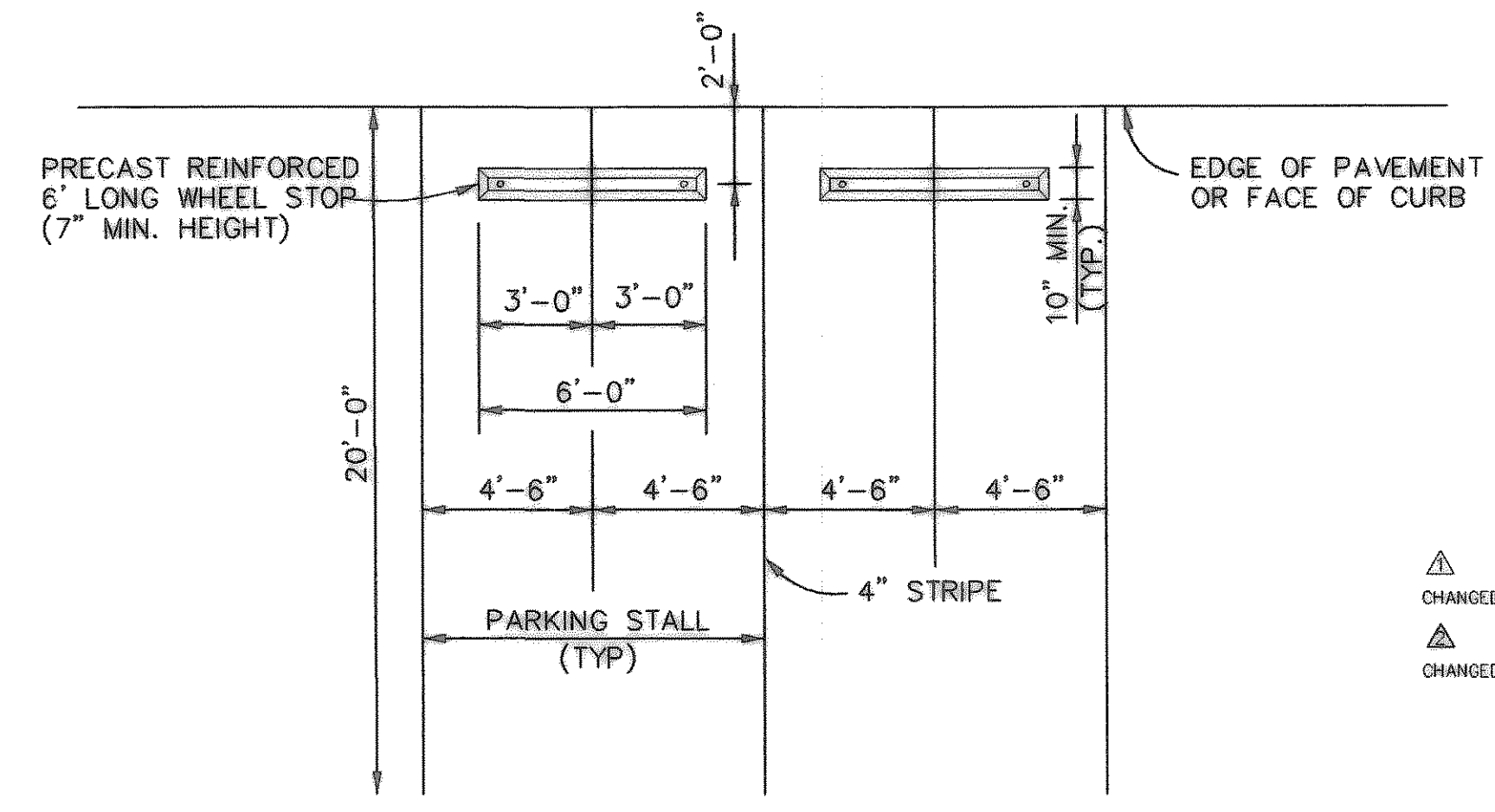
ACCESSIBLE PARKING SIGN DETAIL
N.T.S.



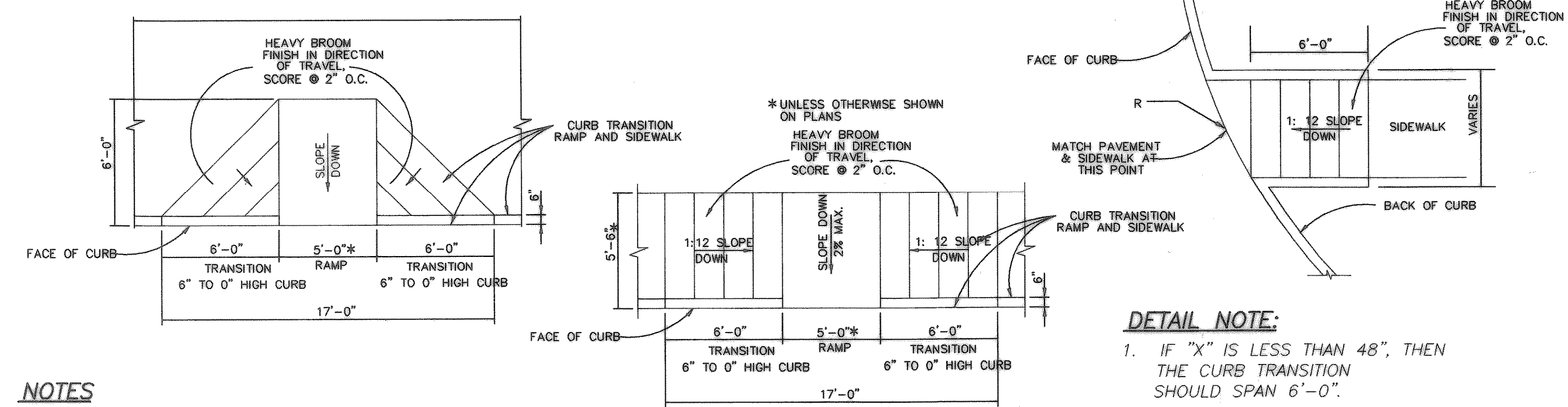
PRECAST CONCRETE WHEEL STOP DETAIL
N.T.S.



DIRECTIONAL ARROW
NO SCALE



PRECAST CONCRETE WHEEL STOP PLACEMENT DETAIL
N.T.S.



TYPICAL HANDICAPPED RAMP DETAILS
N.T.S.

DETAIL NOTE:
1. IF "X" IS LESS THAN 48", THEN THE CURB TRANSITION SHOULD SPAN 6'-0".
* UNLESS OTHERWISE SHOWN ON PLANS

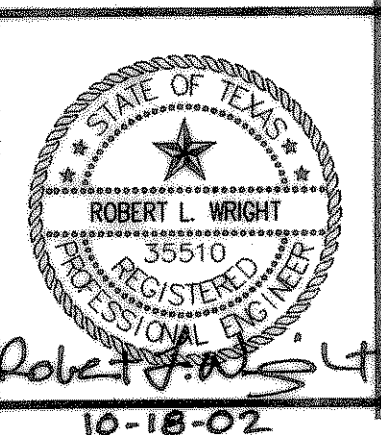
GENERAL NOTES

1. ALL PAVING DIMENSIONS ARE TO FACE OF CURBS UNLESS OTHERWISE NOTED.
2. CONTRACTOR SHALL PRESERVE AND PROTECT ALL PROPERTY CORNERS AND BENCH MARKS.
3. CONTRACTOR SHALL LOCATE AND PROTECT ALL EXISTING UTILITIES. ANY UTILITIES DAMAGED BY THE CONTRACTOR SHALL BE REPAIRED TO THE SATISFACTION OF THE UTILITY OWNER AND/OR CITY OF ROCKWALL AT THE CONTRACTORS EXPENSE.
4. ALL PARKING ISLANDS SHALL HAVE 6" CONCRETE CURB UNLESS OTHERWISE NOTED.
5. ALL PARKING STRIPING SHALL BE FOUR-INCHED WIDE AND TRAFFIC WHITE EXCEPT WHERE NOTED.
6. THE MAXIMUM THICKNESS OF SAND UNDER SIDEWALK SHALL BE 1.5" AND NO SAND SHALL BE USED UNDER PAVEMENT.

- NOTES**
1. RAMP TEXTURES SHALL CONSIST OF EXPOSED CRUSHED STONE AGGREGATE, ROUGHENED CONCRETE, RUBBER, RAISED ABRASIVE STRIPS, OR GROOVES EXTENDING THE FULL WIDTH OF THE RAMP.
 2. RAMP TEXTURES SHALL MEET TEXAS ACCESSIBILITY STANDARDS.
 3. GROOVES SHALL BE 1/8" DEEP, 1/4" TO 3/4" WIDE AT 3/4" TO 2" O.C. ARRANGED SO WATER WILL NOT ACCUMULATE.

RECORD DRAWING
REVISED TO REFLECT KNOWN CHANGES MADE DURING CONSTRUCTION.
Robert L. Wright
DATE 8-18-02

PROJECT NO: TAR2TX



REVISIONS: CONSTRUCTION SET DOCUMENTS; CONSTRUCTION BULLETIN #1 10/18/02

REVISIONS PER OWNER'S COMMENTS
REVISIONS PER CITY COMMENTS

CHECKED BY: JEM

Sheet: CONSTRUCTION DETAILS
C-8

Of: DATE: SEPTEMBER 25, 2002