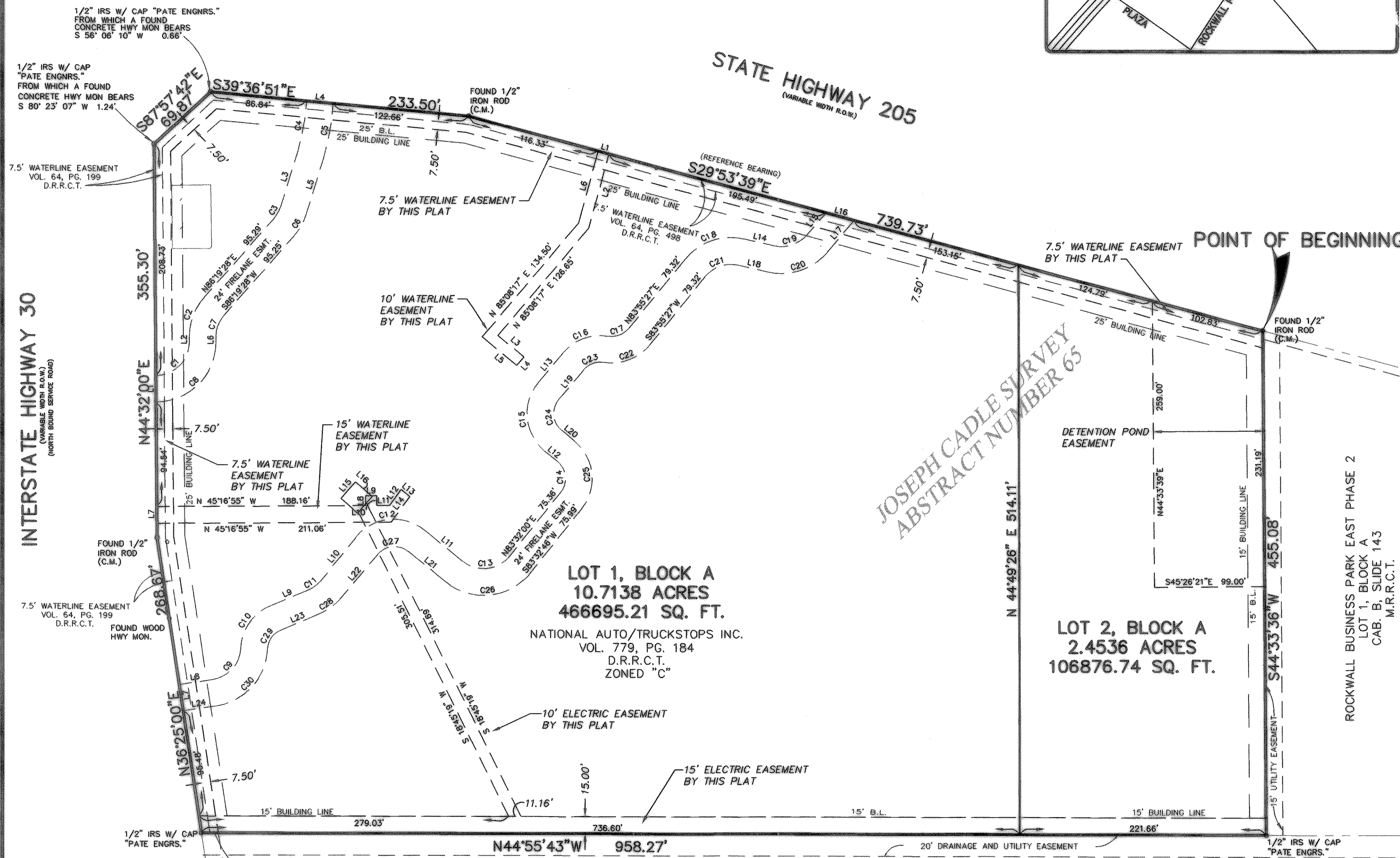


EASEMENT LINE TABLE		
LINE	BEARING	DISTANCE
L1	S29°53'27"E	10.00'
L2	N60°06'33"E	69.60'
L3	N05°15'29"W	30.32'
L4	N84°44'31"E	10.00'
L5	N05°15'29"W	40.39'
L6	N60°06'33"E	67.38'
L7	N44°32'00"E	15.00'
L8	S45°00'00"W	8.97'
L9	N45°00'00"W	10.00'
L10	S45°00'00"W	8.92'
L11	N45°16'55"W	11.51'
L12	S80°48'53"W	17.81'
L13	N06°03'46"W	10.01'
L14	S80°48'53"W	28.54'
L15	S 85°48'09" W	20.00'
L16	S 04°11'51" E	20.00'

FIRELANE LINE TABLE		
LINE	BEARING	DISTANCE
L1	N44°32'00"E	24.00'
L2	N45°30'37"E	5.76'
L3	N62°09'07"E	52.50'
L4	S39°36'51"E	24.01'
L5	S62°09'07"W	52.78'
L6	S45°30'37"W	5.73'
L7	N36°25'00"E	24.00'
L8	N53°35'00"W	30.23'
L9	S67°52'31"E	36.74'
L10	N83°53'23"E	51.10'
L11	S05°42'54"E	44.39'
L12	N05°46'38"W	14.45'
L13	N84°48'02"E	34.72'
L14	S32°00'39"E	27.33'
L15	N85°24'51"E	26.58'
L16	S29°48'04"E	25.98'
L17	S84°39'40"W	37.57'
L18	N32°00'39"W	27.33'
L19	S84°48'02"W	34.72'
L20	S05°46'38"E	14.45'
L21	N05°42'54"W	43.54'
L22	S85°01'33"W	52.92'
L23	N67°52'31"W	36.74'
L24	N53°35'00"W	30.23'

FIRELANE CURVE TABLE					
CURVE	RADIUS	DELTA	LENGTH	CH. BEARING	CHORD
C1	30.00'	89°29'29"	46.86'	S89°44'38"E	42.24'
C2	54.00'	40°48'51"	38.47'	S65°55'03"W	37.66'
C3	30.00'	24°16'13"	12.71'	N74°17'14"E	12.61'
C4	221.03'	11°44'26"	45.55'	N54°51'55"E	45.47'
C5	245.03'	11°44'14"	50.20'	N54°58'12"E	50.11'
C6	54.00'	24°16'13"	22.87'	N74°17'14"E	22.70'
C7	30.00'	40°48'51"	21.37'	S65°55'03"W	20.92'
C8	54.00'	89°20'09"	84.20'	S89°50'59"E	75.92'
C9	30.00'	78°45'43"	41.24'	N87°02'09"E	38.07'
C10	44.00'	64°28'12"	49.51'	S79°53'23"W	46.94'
C11	30.00'	25°15'40"	13.23'	S80°30'21"E	13.12'
C12	44.00'	90°23'43"	69.42'	N50°54'46"W	62.44'
C13	30.00'	86°49'23"	45.46'	S50°00'21"E	41.23'
C14	20.00'	89°19'25"	31.18'	N38°53'04"E	28.12'
C15	44.00'	90°34'41"	69.56'	S39°30'42"W	62.54'
C16	44.00'	59°07'38"	45.41'	N65°38'09"W	43.42'
C17	20.00'	60°00'13"	20.95'	S66°04'26"E	20.00'
C18	54.00'	64°03'54"	60.38'	N64°02'36"W	57.28'
C19	30.00'	62°46'11"	32.87'	S63°23'45"E	31.25'
C20	54.00'	62°46'11"	58.16'	S63°23'45"E	56.24'
C21	30.00'	64°03'54"	33.54'	N64°02'36"W	31.82'
C22	44.00'	60°00'13"	46.08'	S66°04'26"E	44.00'
C23	20.00'	59°07'38"	20.64'	N65°38'09"W	19.74'
C24	20.00'	90°34'41"	31.62'	S39°30'42"W	28.43'
C25	44.00'	89°19'25"	68.60'	N38°53'04"E	61.86'
C26	53.98'	87°45'21"	82.67'	S50°14'18"E	74.83'
C27	20.00'	89°15'33"	31.16'	N50°20'40"W	28.10'
C28	54.00'	25°04'20"	23.63'	S80°24'41"E	23.44'
C29	20.00'	64°28'12"	22.50'	S79°53'23"W	21.34'
C30	54.00'	78°45'43"	74.23'	N87°02'09"E	68.52'

LEGEND
 C.M. CONTROLLING MONUMENT
 HWY. HIGHWAY
 MON. MONUMENT



LOT 1, BLOCK A
 10.7138 ACRES
 466695.21 SQ. FT.
 NATIONAL AUTO/TRUCKSTOPS INC.
 VOL. 779, PG. 184
 D.R.R.C.T.
 ZONED "C"

LOT 2, BLOCK A
 2.4536 ACRES
 106876.74 SQ. FT.

ROCKWALL BUSINESS PARK EAST PHASE 1
 LOT 1, BLOCK A
 CAB B, SLIDE 37
 M.R.R.C.T.

COMMERCE STREET
 (60' R.O.W.)

SEE SHEET C-1A
 FOR LEGAL DESCRIPTION

FINAL PLAT OF TRAVELCENTERS OF AMERICA ADDITION

LOT 1, BLOCK A
 13.167 ACRES SITUATED IN THE
 JOSEPH CADLE SURVEY
 ABSTRACT NUMBER 65
 CITY OF ROCKWALL,
 ROCKWALL COUNTY, TEXAS

OWNER:
 TRAVEL CENTERS OF AMERICA
 24601 CENTER RIDGE RD. STE# 200
 WESTLAKE, OHIO 44145-5634
 (440)808-7378

ENGINEER:
 PATE ENGINEERS
 8150 BROOKRIVER DR STE# S-700
 DALLAS, TX 75247
 VOICE: (214)357-2981
 FAX: (214)357-2985
 FEBRUARY 28, 2001
 PROJECT NO. 98472