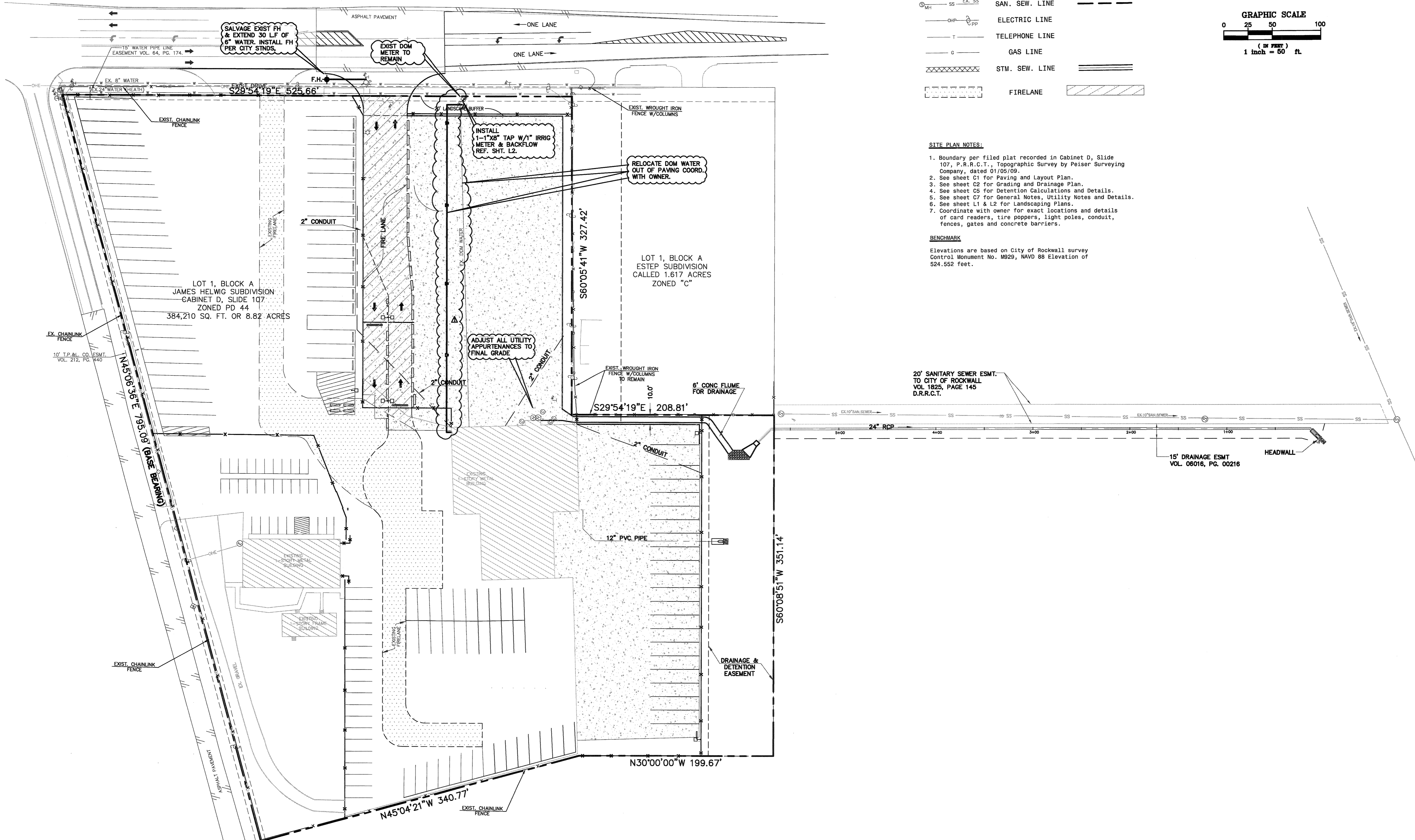
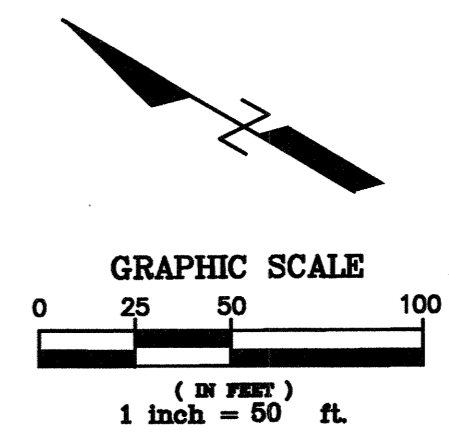


X:\S\Land Projects 2008\440-01\dwg\03COU01.dwg 3/4/2010 12:13:20 PM CST

GOLIAD STREET
(HIGHWAY NO. 205)
(VARIABLE WIDTH R.O.W.)



EXISTING	LEGEND	PROPOSED
W EX. W	WATER LINE	
SS EX. SS	SAN. SEW. LINE	
OH EX. PP	ELECTRIC LINE	
T	TELEPHONE LINE	
G	GAS LINE	
XXXXXX	STM. SEW. LINE	
	FIRELANE	

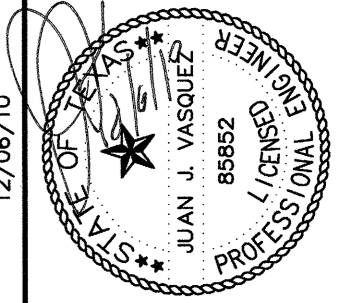


SITE PLAN NOTES:

- Boundary per filed plat recorded in Cabinet D, Slide 107, P.R.R.C.T., Topographic Survey by Peiser Surveying Company, dated 01/05/09.
- See sheet C1 for Paving and Layout Plan.
- See sheet C2 for Grading and Drainage Plan.
- See sheet C5 for Detention Calculations and Details.
- See sheet C7 for General Notes, Utility Notes and Details.
- See sheet L1 & L2 for Landscaping Plans.
- Coordinate with owner for exact locations and details of card readers, tire poppers, light poles, conduit, fences, gates and concrete barriers.

BENCHMARK
Elevations are based on City of Rockwall survey Control Monument No. M829, NAVD 88 Elevation of 524.552 feet.

THE SEAL APPEARING ON THIS DOCUMENT WAS AUTHORIZED BY
JUAN J. VASQUEZ
12/06/10



TRANSM TRUCKING, INC.
2670 SOUTH GOLIAD
ROCKWALL, TEXAS 75032
PHONE: 972-722-0673
FAX: 972-961-9050

UTILITY PLAN
TRANSM TRUCKING, INC.
LOT 1, BLOCK A
CITY OF ROCKWALL, ROCKWALL COUNTY, TEXAS

RECORD DRAWING

THE IMPROVEMENTS SHOWN ON THIS PLAN WERE COMPLETED IN GENERAL COMPLIANCE WITH THE DESIGN PLANS TO THE BEST OF OUR KNOWLEDGE. THIS DETERMINATION WAS MADE BASED ON POST-CONSTRUCTION SURVEY DATA AND INFORMATION PROVIDED BY THE CONTRACTOR.

SIGNED: DATE: 12/6/10

VASQUEZ ENGINEERING, TEXAS REG. F-12266

Scale: 1" = 50'
Designed by: J.J.V.
Drawn by: J.N.M.
Checked by: J.J.V.
508-01.dwg\03COU01.dwg
12/06/10

SHEET
C3

VASQUEZ ENGINEERING
4300 Alpha Road
Building 1, Suite 100
Dallas, Texas 75244
Ph: 972-385-8212
TX Registration # F-12266

NO.	DATE	APP.
12/06/10	RECORD DRAWINGS	JUV