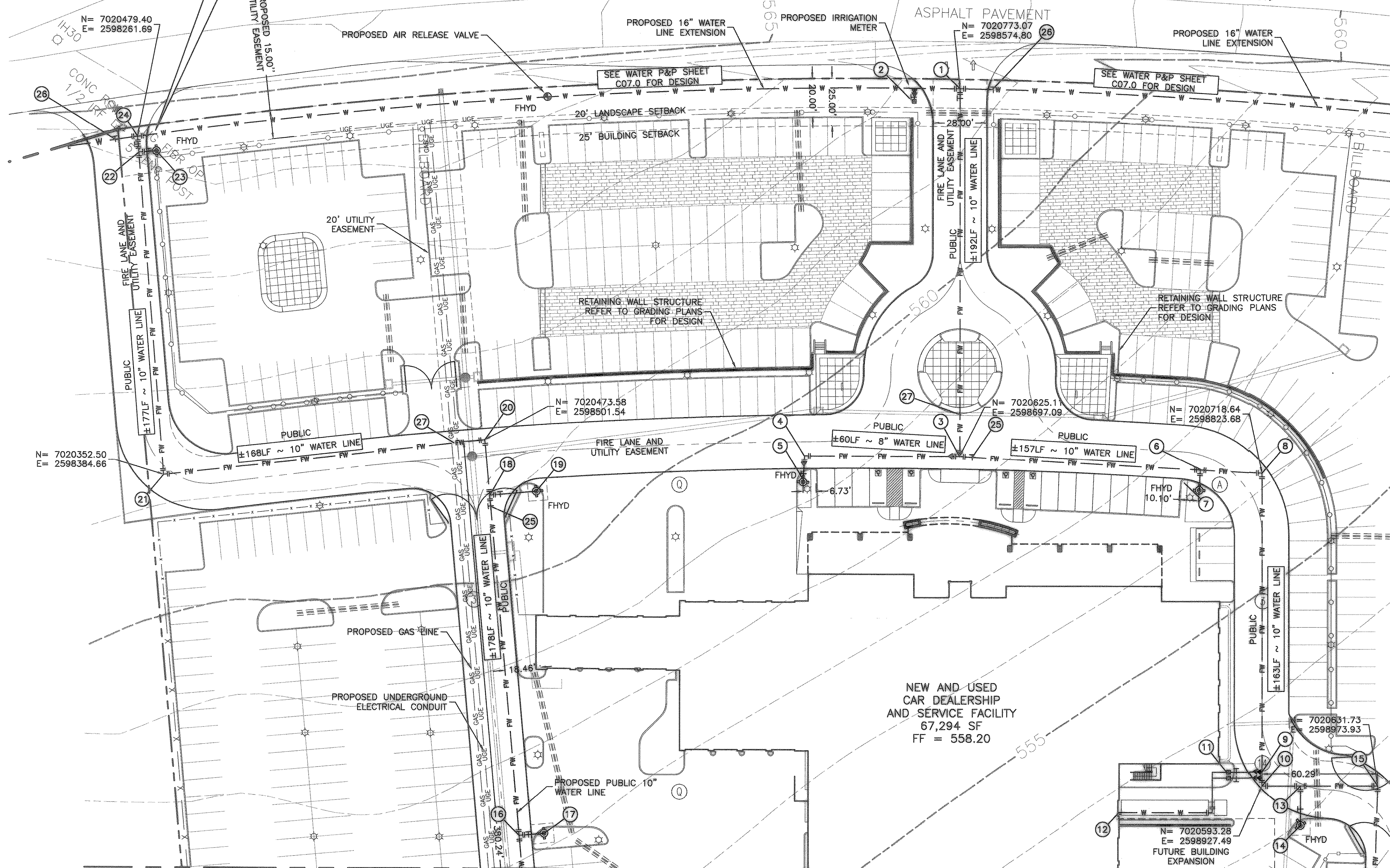
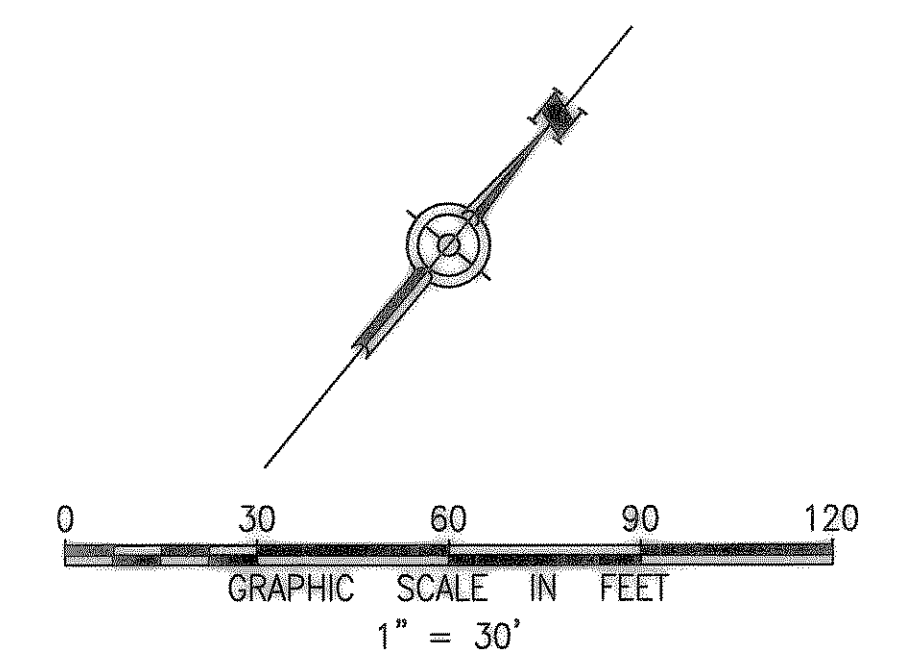


# INTERSTATE HIGHWAY NO. 30 SERVICE ROAD (RIGHT-OF-WAY VARIES)



---	PROPERTY LINE
---	ADJOINED PROPERTY
---	EXISTING CURB
---	EXISTING EASEMENT OR SETBACK
W --- W	EXISTING WATER LINE
SS --- SS	EXISTING SANITARY SEWER LINE
---	EXISTING STORM DRAIN LINE
---	EXISTING OVERHEAD UTILITY LINES
---	EXISTING STORM DRAIN INLET
---	EXISTING SANITARY SEWER MANHOLE
---	EXISTING SAN. SEWER CLEANOUT
---	EXISTING WATER METER
---	EXISTING FIRE HYDRANT
---	EXISTING WATER VALVE
---	EXISTING UTILITY POLES
---	EXISTING TELEPHONE RISER
---	EXISTING CABLE T.V. RISER
---	EXISTING GAS METER
---	EXISTING SIGN
---	PROPOSED CURB
FW --- FW	PROPOSED WATER LINE
---	PROPOSED FIRE WATER LINE
---	PROPOSED ELECTRIC LINE
---	PROPOSED GAS LINE
---	PROPOSED SANITARY SEWER LINE
---	PROPOSED FENCE
---	PROPOSED FENCE
---	PROPOSED FENCE
---	PROPOSED SAN. SEWER MANHOLE
---	PROPOSED GATE VALVE
---	PROPOSED SITE LIGHTING
---	PROPOSED AIR RELEASE VALVE
---	PROPOSED REDUCER
---	IRRIGATION CONDUIT

- NOTES**
- BUTTERFLY GATE VALVES (MUELLER OR KENNEDY) TO BE LOCATED 2' FROM BACK OF CURB AND INSTALLED ON A 12"x12"x6" CONC. PAD WITH #3 BARS PER CITY DETAILS.
  - FIRE HYDRANTS SHALL BE MUELLER OR AMERICAN DARLING AND CAPS TO BE PAINTED YELLOW.
  - MEGA-LUGS SHALL BE INSTALLED ON ALL VERTICAL CHANGE IN DIRECTION AND ON ALL HORIZONTAL BENDS GREATER THAN 45° OR GREATER AND TO BE PLACED AT THE BENDS AND AT THE NEXT PIPE JOINT IN EACH DIRECTION FROM THE BEND.

**BENCHMARK**  
SITE BM: "X" ON TOP OF INLET, WEST SIDE OF TOWNSEND DRIVE, APPROXIMATELY 275' SOUTH OF INTERSTATE HIGHWAY NO. 30. ELEVATION = 539.62

**NOTES BY SYMBOL**

- |                                                                                                                         |                                                 |                                         |                                         |
|-------------------------------------------------------------------------------------------------------------------------|-------------------------------------------------|-----------------------------------------|-----------------------------------------|
| ① 16"x10" TEE W/ (1) 10" GATE VALVE                                                                                     | ⑧ (1) 10" 90° BEND W/THRUST BLOCK               | ⑮ (1) 10" 90° BEND W/THRUST BLOCK       | ⑳ (1) 10" 90° BEND W/THRUST BLOCK       |
| ② 16"x10" TEE W/ 10"x6" REDUCER & 6"x 2" REDUCER TAPPING SLEEVE W/ (1) 2" CITY METER & (1) 2" BACKFLOW W/DETECTOR CHECK | ⑨ (2) 2" 10"x6" REDUCERS AND (2) 6"x2" REDUCERS | ⑯ (1) 10"x6" TEE                        | ㉑ (1) 10" 90° BEND W/THRUST BLOCK       |
| ③ (1) 10" TEE - (1) 10"x8" REDUCER                                                                                      | ⑩ (1) 10" 90° BEND W/THRUST BLOCK               | ⑰ FIRE HYDRANT ASSEMBLY W/6" GATE VALVE | ㉒ (1) 10"x6" TEE                        |
| ④ (1) 8" 90° BEND W/THRUST BLOCK W/ 8"x6" REDUCER                                                                       | ⑪ (2) 2" CITY METERS                            | ⑱ (1) 10"x6" TEE                        | ㉓ FIRE HYDRANT ASSEMBLY W/6" GATE VALVE |
| ⑤ FIRE HYDRANT ASSEMBLY W/6" GATE VALVE                                                                                 | ⑫ REFER TO MEP FOR BUILDING CONNECTION          | ⑲ FIRE HYDRANT ASSEMBLY W/6" GATE VALVE | ㉔ (1) 10" GATE VALVE                    |
| ⑥ (1) 10"x6" TEE                                                                                                        | ⑬ (1) 10"x6" TEE                                | ㉑ (1) 10" 90° BEND W/THRUST BLOCK       | ㉕ (1) 16" BUTTERFLY GATE VALVE          |
| ⑦ FIRE HYDRANT ASSEMBLY W/6" GATE VALVE                                                                                 | ⑭ FIRE HYDRANT ASSEMBLY W/6" GATE VALVE         | ㉒ (1) 10" 90° BEND W/THRUST BLOCK       | ㉖ (1) 16" BUTTERFLY GATE VALVE          |

- MATCHLINE - SEE SHEET C6.2 FOR DESIGN CONTINUATION -

## RECORD DRAWING

02/15/08

THE DRAWINGS CONTAINED IN THIS SET ARE "RECORD DRAWINGS". TO THE BEST OF OUR KNOWLEDGE, CARTER BURGESS, INC. HEREBY CERTIFY THAT THIS PLAN IS AS-BUILT. THE INFORMATION PROVIDED IS BASED ON SITE OBSERVATION, SURVEY CONDUCTED AT THE SITE BY THE SURVEYOR, AND INFORMATION PROVIDED BY THE CONTRACTOR.

THE LOCATION OF EXISTING UNDERGROUND UTILITIES ARE SHOWN IN AN APPROXIMATE WAY ONLY. THE CONTRACTOR TO DETERMINE THE EXACT LOCATION OF ALL EXISTING UTILITIES BEFORE COMMENCING WORK. CONTRACTOR WILL BE FULLY RESPONSIBLE FOR ANY AND ALL DAMAGES WHICH MIGHT OCCUR BY FAILURE TO EXACTLY LOCATE AND PRESERVE ANY AND ALL UNDERGROUND UTILITIES.

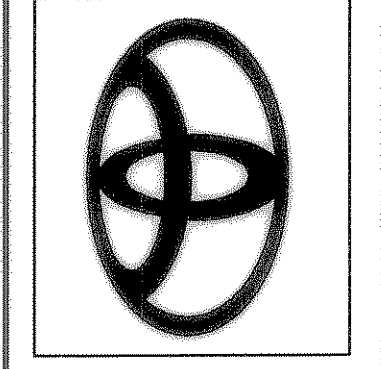
**Texas Excavation  
Safety System**

**CALL 48 HOURS  
BEFORE YOU DIG**

ISSUE:	ISSUED FOR PERMIT	CITY REVIEW COMMENTS	RAL	RAL	
DATE:	2/20/07	03/12/07	02/15/08		
NO:					

**SITE UTILITY PLAN**

INTERSTATE HIGHWAY NO. 30  
ROCKWALL, TEXAS



**Carter & Burgess**  
Consultants in Engineering, Architecture, Planning, Construction Management, and Related Services  
Carter & Burgess, Inc.  
Building Programs Division - Floor 30  
777 Main Street, Fort Worth, Texas 76102  
(817) 222-8800 (817) 222-8550

PROJECT NO.	293533.020
DRAWN BY:	RAL
CHECKED BY:	MT

SHEET:  
**C-6.1**