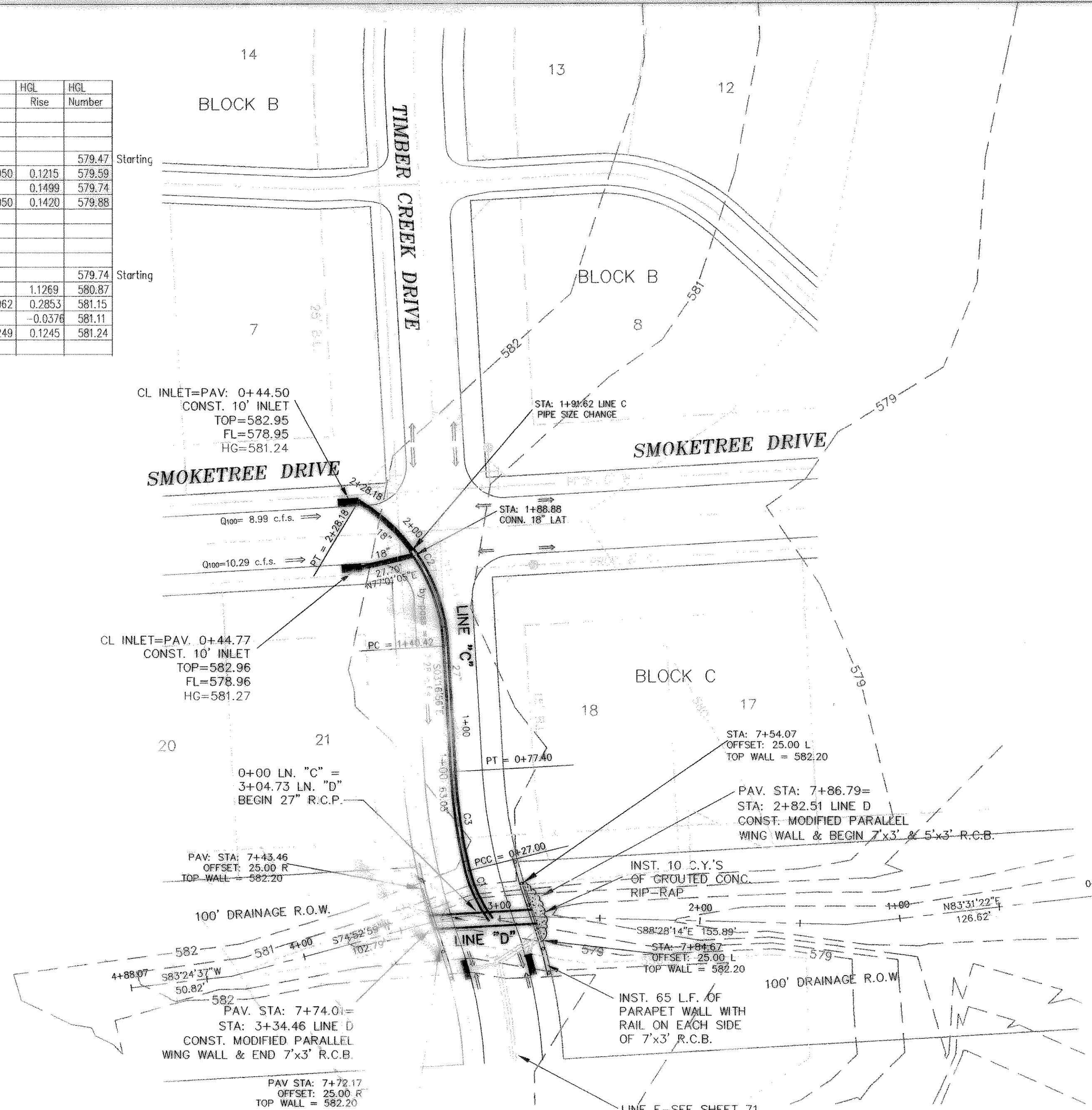
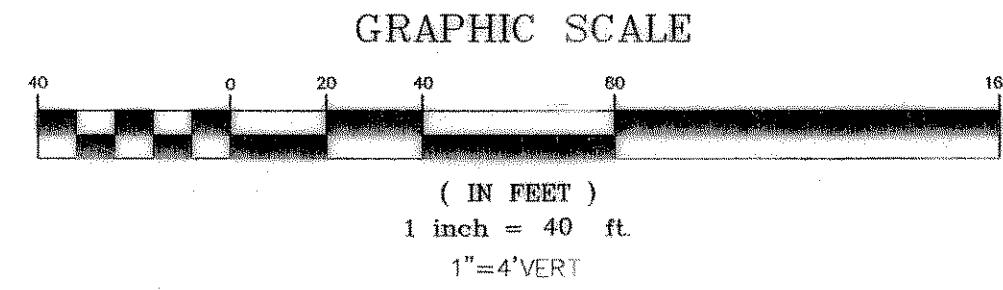


From	To	Length	Box Height	Width	DESIGN Q100	Pipe Size (in)	CAP Q100	FULL V	PARTIAL V	PARTIAL FLOW %	FLOW CHT. No.	Kj	Flow R(H)	Flow R ² /3	Flow Area	FULL S	DESIGN S	HGL Rise	HGL Number	
STM D																			579.47	Starting
	304.73	282.51	22.22	3	7	183.39	175.35	8.73	8.73	1.05	1.00		1.0500	1.0331	21.00	0.0055	0.0050	0.1215	579.59	
Junction Loss	334.46	304.73	29.73			171.39	175.35	8.16	9.39	0.98	1.15		1.0500	1.0331	21.00	0.0048	0.0050	0.1420	579.88	
STM C								8.73											579.74	Starting
Junction Loss	190.00	0	190			12	24.39	3.02	3.02	0.49	1.00	0.4000	0.5625	0.6814	3.9761	0.0015	0.0062	0.2853	580.87	
Junction Loss	228.17	190	38.17			6	16.58	3.40	2.89	0.36	0.85		0.3750	0.5200	1.7671	0.0033	0.0249	0.1245	581.24	



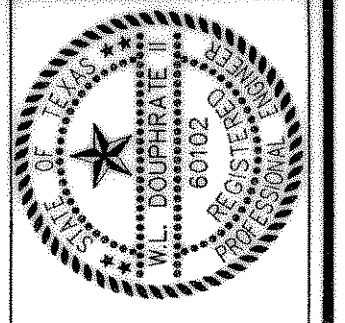
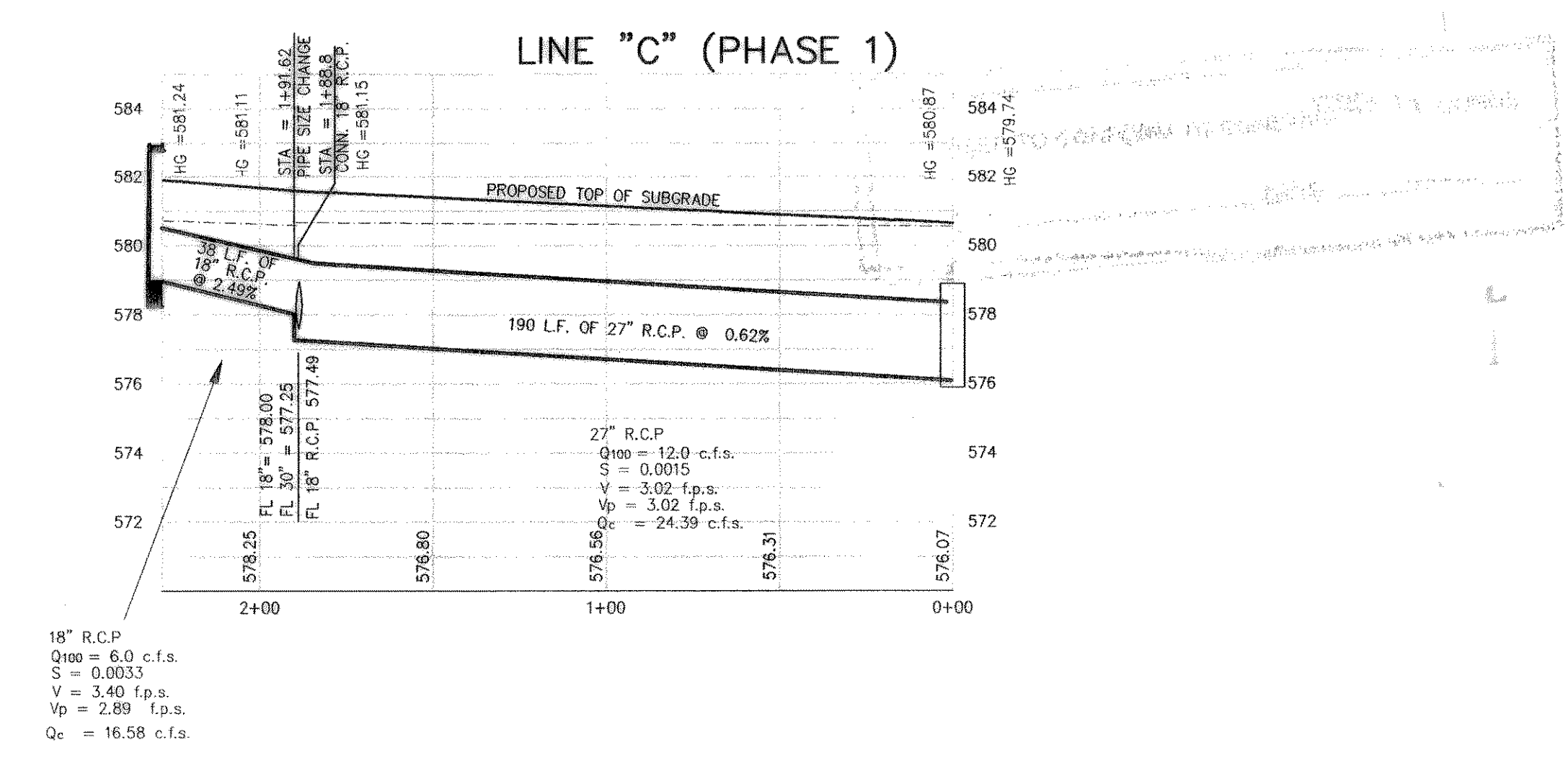
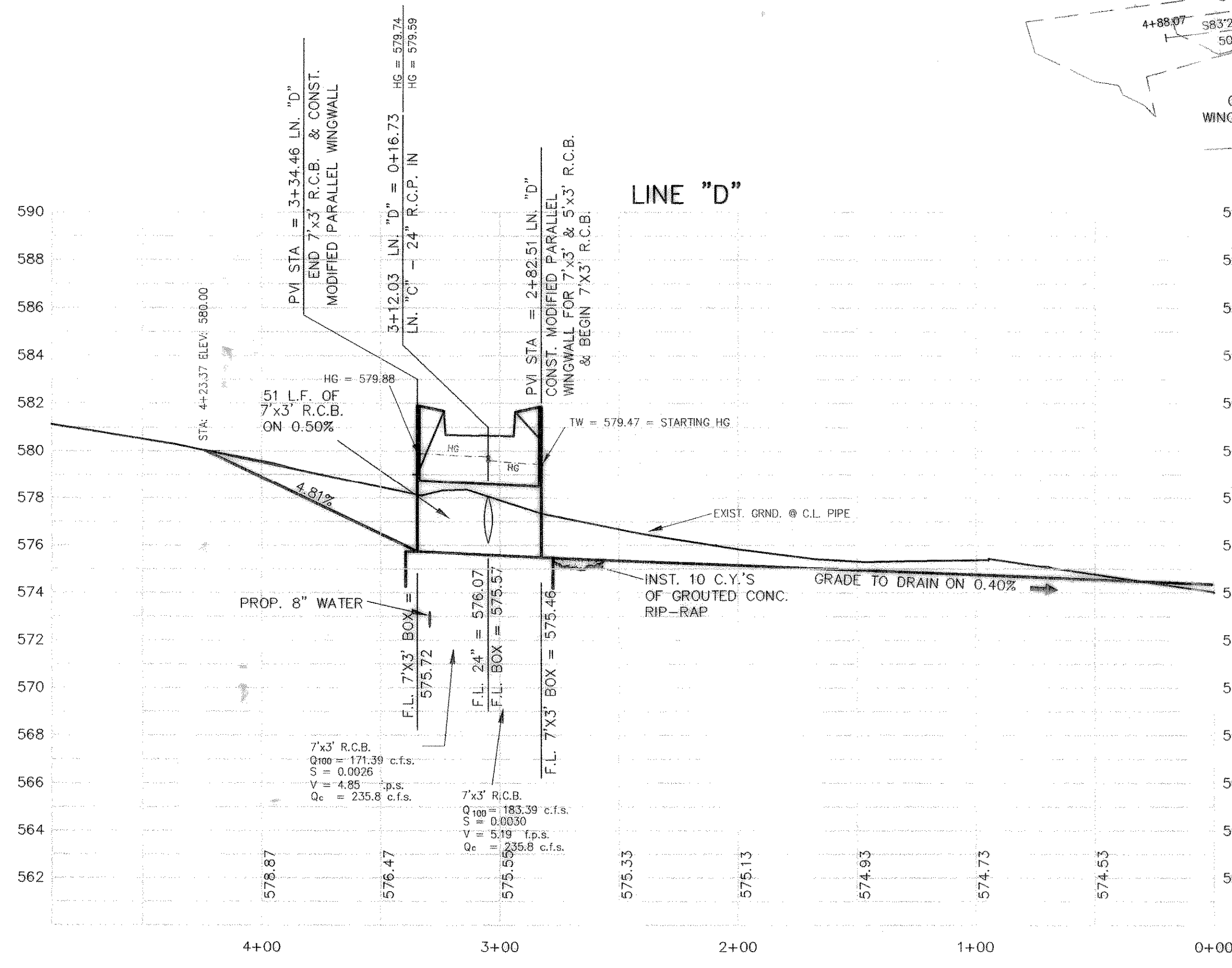
NOTE:
THE HEADWALLS WILL BE STAKED IN THE FIELD BY DEVELOPER'S ENGINEER PRIOR TO CONSTRUCTION. THE CITY ENGINEER WILL APPROVE HEADWALL LOCATION IN THE FIELD PRIOR TO CONSTRUCTION.

LINE	LENGTH	BEARING
L1	51.95'	N86°43'04"E

CURVE	LENGTH	RADIUS	TANGENT	CH BRG	CH DIST	DELTA
C1	27.00	70.00	13.67	S25°02'14"E	26.83	22°05'55"
C2	87.76	90.00	47.72	N31°12'58"W	84.32	55°52'02"
C3	50.40	250.00	25.28	S08°12'46"E	50.31	11°33'01"

BENCHMARK:
T.C. CENTERLINE OF INLET ON WEST SIDE OF SILVER VIEW LANE BETWEEN LOTS 4 & 5, BLOCK B, OF STERLING FARMS ADDITION
ELEV: 599.65

REVISED TO CONFORM TO CONSTRUCTION RECORDS.
DATE: 5/2/00



THE SEAL APPEARING ON THIS DOCUMENT WAS AUTHORIZED BY W.L. DOUPHRATE II TEXAS P.E. NO. 80102 ON

DOUPHRATE & ASSOCIATES, INC.
ENGINEERING • PROJECT MANAGEMENT • SURVEYING
2235 RIDGE RD., # 200 ROCKWALL, TEXAS 75087
PHONE: (972) 771-9004 FAX: (972) 771-9005

STORM SEWER PLAN & PROFILE
LINES C & D
TIMBER CREEK ESTATES
CITY OF ROCKWALL, ROCKWALL COUNTY, TEXAS

REV. 9-27-02
CHG. 5-36" TO 7'x3' RCB

REVISION	DATE
WLD.	
CHECKED	
K.E.B.	
DRAWN	
2/01/01	
DATE	
9913 STM3	
PROJECT	

70 OF