

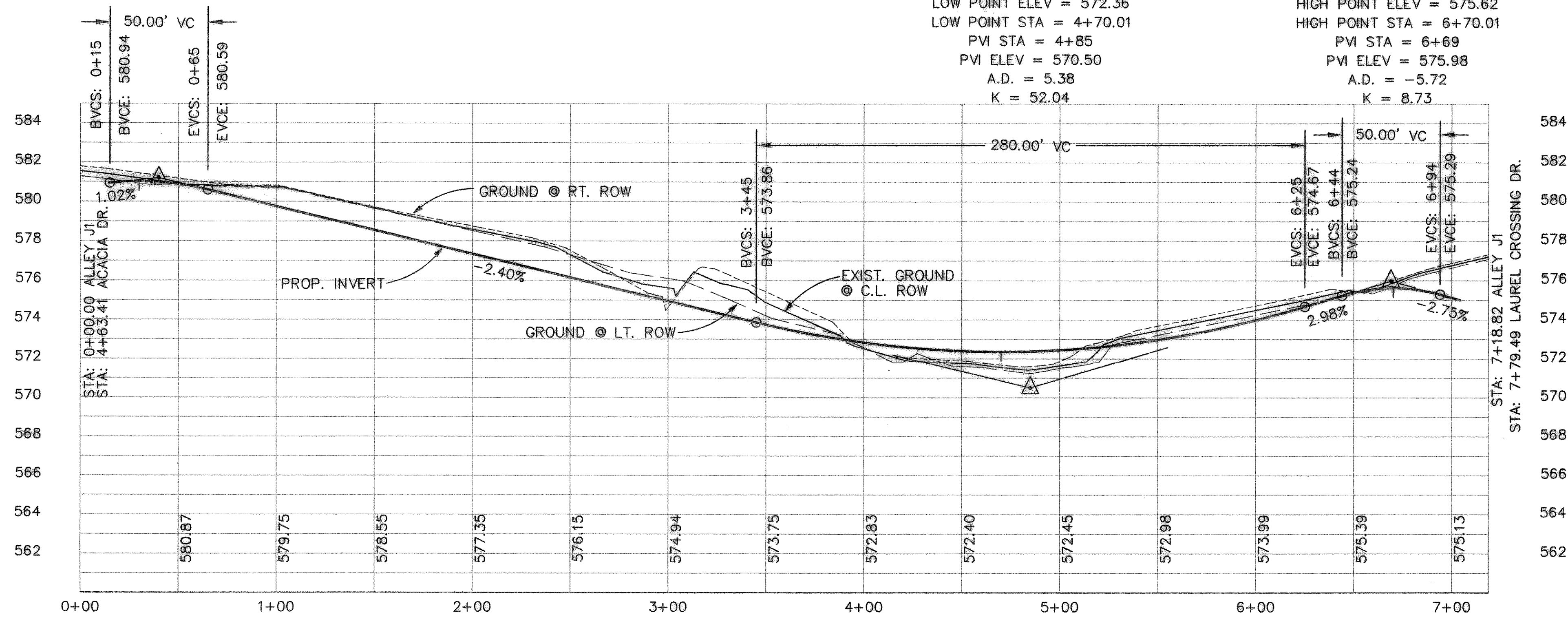
THE SEAL APPEARING ON THIS DOCUMENT WAS AUTHORIZED BY W.L. DOUPHRATE II TEXAS P.E. NO. 60102 ON 2/9/11

**DOUPHRATE & ASSOCIATES, INC.**  
 ENGINEERING • PROJECT MANAGEMENT • SURVEYING  
 2235 RIDGE RD., # 200 ROCKWALL, TEXAS 75087  
 PHONE: (972)771-9004 FAX: (972)771-9005

HIGH POINT ELEV = 581.01  
 HIGH POINT STA = 0+29.90  
 PVI STA = 0+40  
 PVI ELEV = 581.19  
 A.D. = -3.42  
 K = 14.61

LOW POINT ELEV = 572.36  
 LOW POINT STA = 4+70.01  
 PVI STA = 4+85  
 PVI ELEV = 570.50  
 A.D. = 5.38  
 K = 52.04

HIGH POINT ELEV = 575.62  
 HIGH POINT STA = 6+70.01  
 PVI STA = 6+69  
 PVI ELEV = 575.98  
 A.D. = -5.72  
 K = 8.73



REVISED TO COMPLY WITH CONSTRUCTION RECORDS  
 DATE: 5/23/03

**BENCHMARK:**  
 T.C. CENTERLINE OF INLET ON WEST SIDE  
 OF SILVER VIEW LANE BETWEEN LOTS 4  
 & 5, BLOCK B, OF STERLING FARMS  
 ADDITION  
 ELEV: 599.65

**PAVING PLAN & PROFILE**  
**ALLEY J1**  
**TIMBER CREEK ESTATES**  
 CITY OF ROCKWALL, COUNTY OF ROCKWALL

REVISION  
 W.L.D.  
 CHECKED  
 K.E.B.  
 DRAWN  
 7/17/00  
 DATE  
 9913PV22  
 PROJECT