

THE SEAL APPEARING ON THIS DOCUMENT WAS AUTHORIZED BY W.L. DOUPHRATE II TEXAS P.E. NO. 60102 ON 2/9/01

DOUPHRATE & ASSOCIATES, INC.
 ENGINEERS - PROJECT MANAGEMENT - SURVEYING
 2255 RIDGE RD., # 200 ROCKWALL, TEXAS 75087
 PHONE: (972)771-9004 FAX: (972)771-9005

REVISED TO CONFORM TO CONSTRUCTION RECORDS.
 DATE: 5/23/03

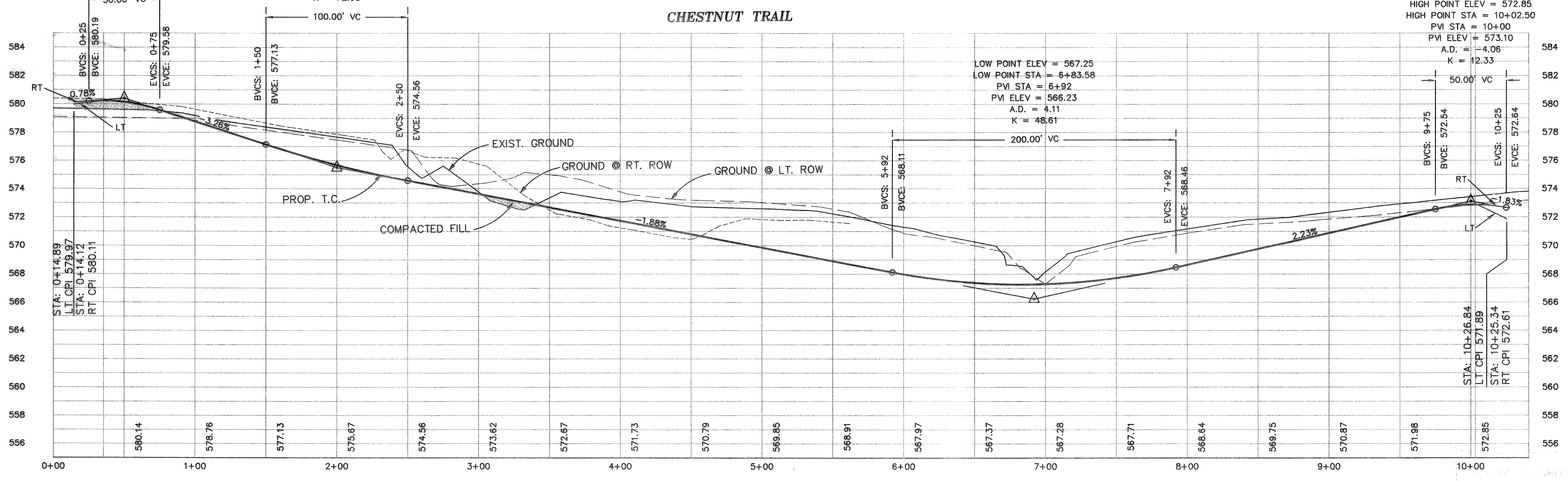
BENCHMARK:
 T.C. CENTERLINE OF INLET ON WEST SIDE OF SILVER VIEW LANE BETWEEN LOTS 4 & 5, BLOCK B, OF STERLING FARMS ADDITION
 ELEV: 599.65

HIGH POINT ELEV = 580.23
 HIGH POINT STA = 0+34.66
 PVI STA = 0+50
 PVI ELEV = 580.39
 A.D. = -4.04
 K = 12.38

PVI STA = 2+00
 PVI ELEV = 575.50
 A.D. = 1.38
 K = 72.68

HIGH POINT ELEV = 572.85
 HIGH POINT STA = 10+02.50
 PVI STA = 10+00
 PVI ELEV = 573.10
 A.D. = -4.06
 K = 12.33

LOW POINT ELEV = 567.25
 LOW POINT STA = 6+83.58
 PVI STA = 6+92
 PVI ELEV = 566.23
 A.D. = 4.11
 K = 48.61



PAVING PLAN & PROFILE
 CHESTNUT TRAIL
 TIMBER CREEK ESTATES
 CITY OF ROCKWALL, ROCKWALL COUNTY, TEXAS

REVISION
W.L.D. CHECKED
K.E.B. DRAWN
7/17/00 DATE
9913PV9 PROJECT