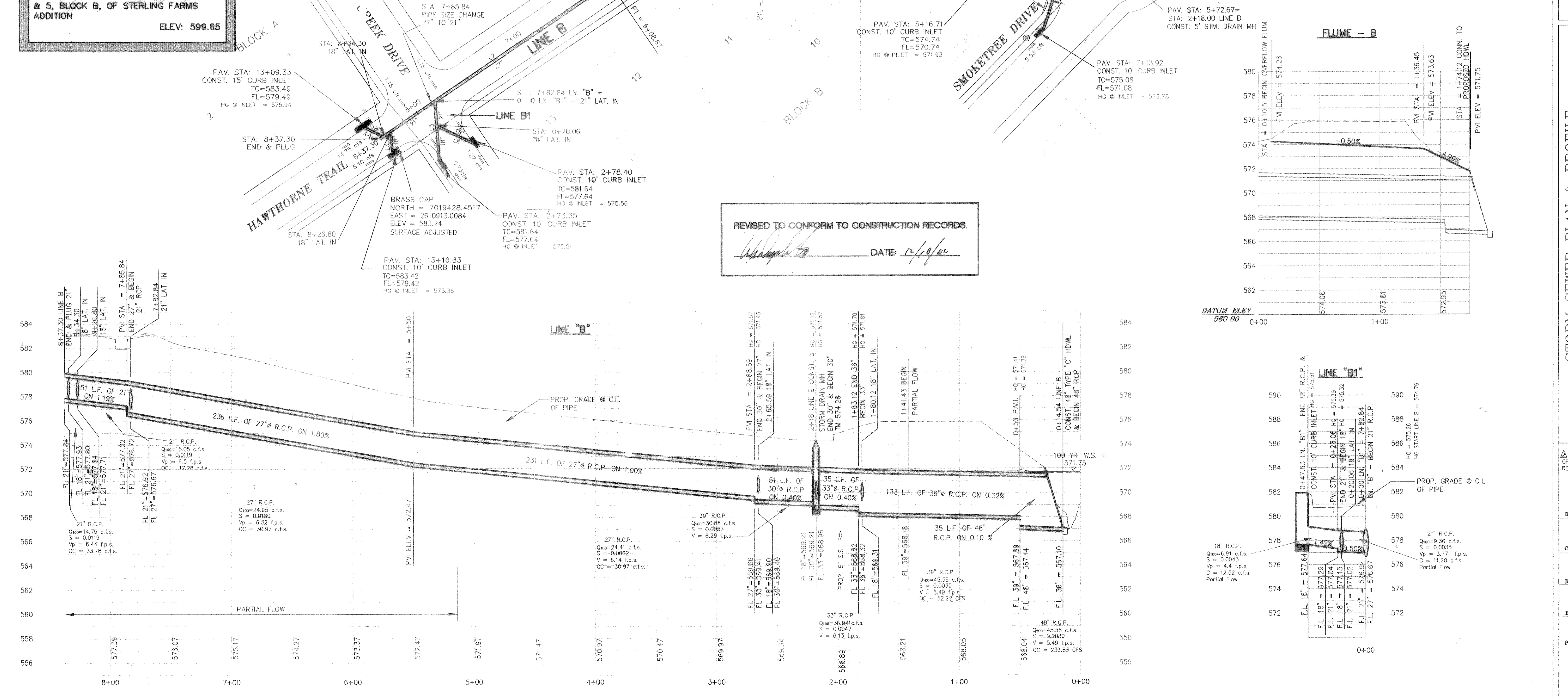
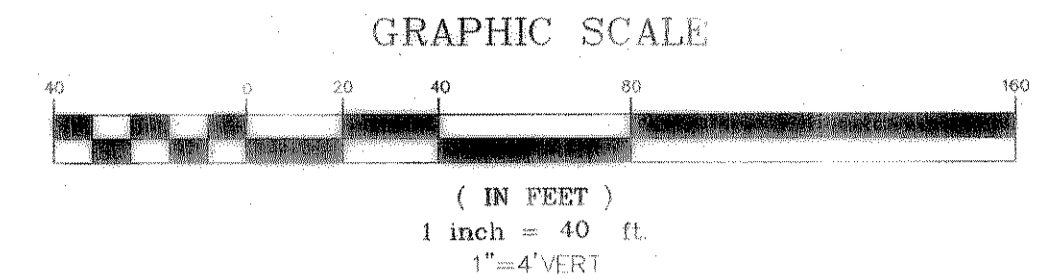


PROJECT	9913	Box	DISIGN	Pipe	CAP	FULL	PARTIAL	PARTIAL	FLOW	Flow	Flow	DESIGN	HQ.	HQ.			
From	To	Length	Height	Size (in)	Q100	V	V	FLOW R.	Q100	R (ft)	S	S	Rise	Number			
S.W. B	50.00	14.54	36.46	45.98	48	81.26	3.63	4.10	1.14	1.13	1.0000	1.0000	12.5864	0.0090	0.0032	0.0357	571.75
Junction Loss	183.12	50	133.12	45.98	39	70.06	5.49	5.66	1.14	1.03	1.0000	0.8125	8.3707	0.0030	0.0072	0.4057	571.81
Junction Loss	218.00	183.12	34.88	36.41	33	33.45	6.13	8.31	1.14	1.03	0.8000	0.6875	0.7790	0.0047	0.0040	0.1853	571.86
Junction Loss	268.59	218	50.59	30.88	30	25.94	6.29	6.48	1.14	1.03	0.4500	0.6250	0.7330	0.0057	0.0040	0.0722	571.91
Junction Loss	795.84	268.59	517.25	24.41	27	30.97	6.14	6.32	1.14	1.03	1.0000	0.5625	0.6814	0.0062	0.0100	3.2137	575.28
Junction Loss	854.00	795.84	17.13	15.05	21	17.28	6.26	6.07	1.14	0.97	1.0000	0.4375	0.5763	0.0090	0.0119	0.1561	575.91
Junction Loss	837.30	854.00	16.5	14.75	21	17.28	6.13	6.44	0.85	1.00	1.0000	0.4375	0.5763	0.0087	0.0119	0.0910	576.03

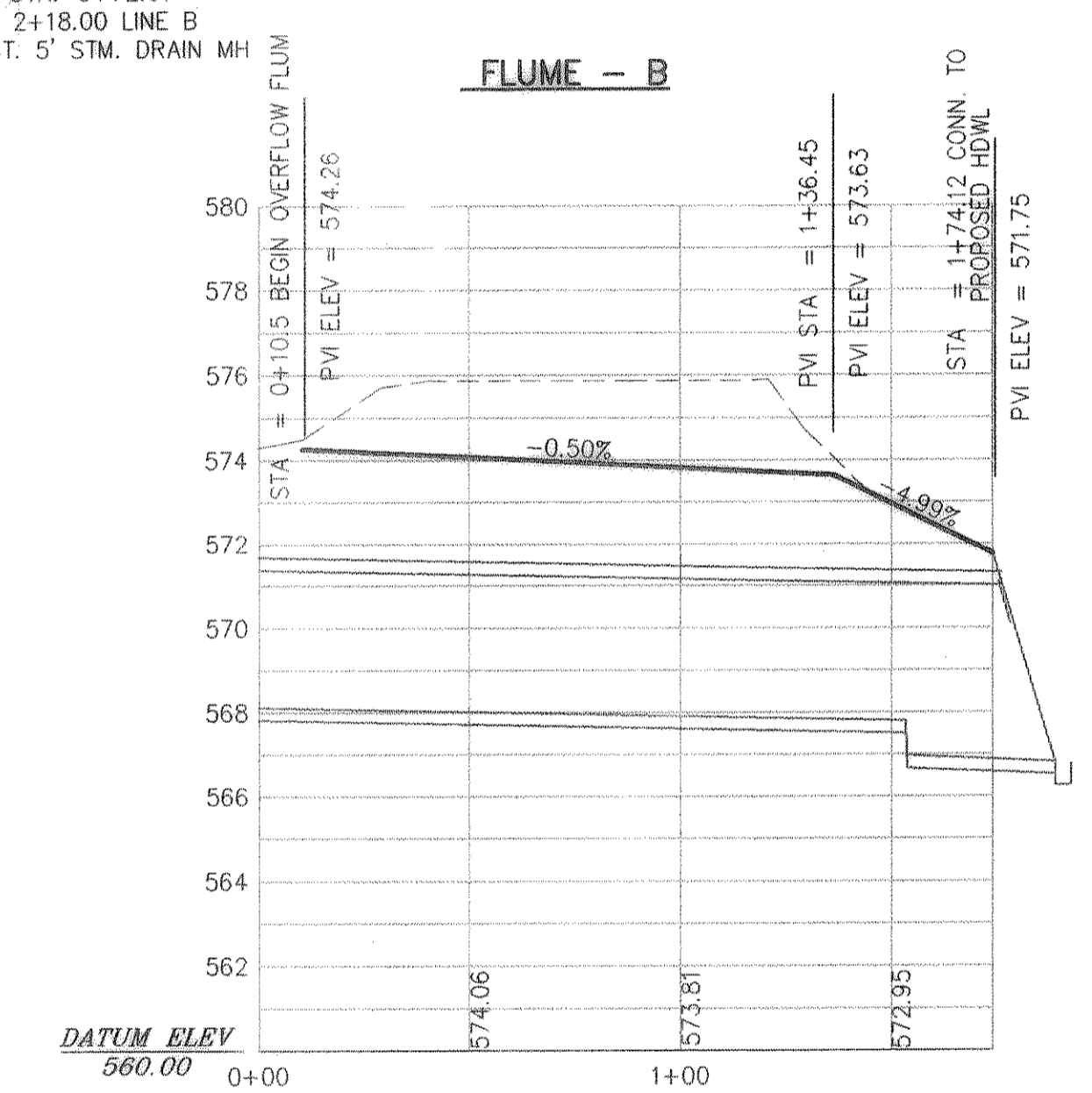
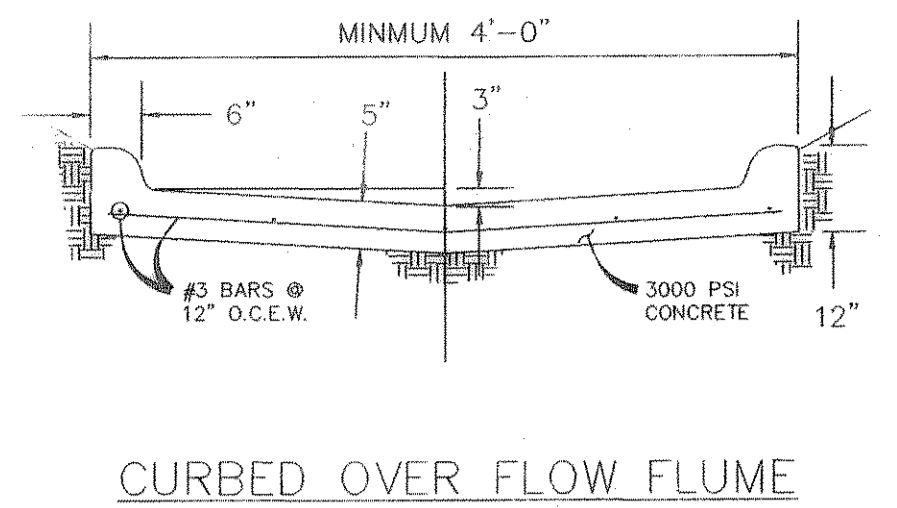
CURVE TABLE					
CURVE	LENGTH	RADIUS	TANGENT	CH BRG	DELTA
C1	134.27	225.00	69.20	N64°40'01"W	132.29
C2	134.27	225.00	69.20	N64°40'01"W	132.29

LINE TABLE		
LINE	LENGTH	BEARING
L1	16.74'	S72°25'44"W
L2	16.74'	N38°14'13"E
L3	16.74'	N21°45'47"W
L4	47.63'	N38°14'13"E
L5	33.41'	S21°45'47"W
L6	228.63'	N81°45'47"W
L7	256.40'	N47°34'16"W
L8	81.30'	N60°25'38"E
L9	218.00'	S42°25'44"W
L10	28.44'	N19°30'51"W

BENCHMARK:
T.C. CENTERLINE OF INLET ON WEST SIDE OF SILVER LANE BETWEEN LOTS 4 & 5, BLOCK B, OF STERLING FARMS ADDITION
ELEV: 599.65



REVISED TO CONFORM TO CONSTRUCTION RECORDS.
DATE: 12/8/01



THE SEAL APPEARING ON THIS DOCUMENT IS VALID ONLY IF IT IS USED BY THE ENGINEER WHOSE NAME IS ON IT. NO. 80102 ON 1/19/04

DOUPHRATE & ASSOCIATES, INC.
ENGINEERING - PROJECT MANAGEMENT - SURVEYING
2236 RIDGE RD., # 200 ROCKWALL, TEXAS 75087
PHONE: (972)771-9004 FAX: (972)771-9005

STORM SEWER PLAN & PROFILE
LINE B
TIMBER CREEK ESTATES
CITY OF ROCKWALL, ROCKWALL COUNTY, TEXAS

REVISION	DATE	PROJECT
WLD CHECKED	7/25/00	9913 STM2
KEB DRAWN		

69 OF