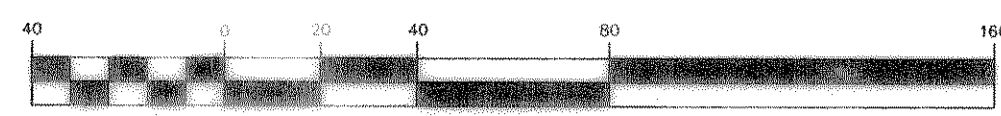


DOUPHRADE & ASSOCIATES, INC.
 ENGINEERING - PROJECT MANAGEMENT - SURVEYING
 2235 RIDGE RD., # 200 ROCKWALL, TEXAS 75087
 PHONE: (972)771-9004 FAX: (972)771-9005

STORM SEWER PLAN & PROFILE
 LINES A & A-1
 TIMBER CREEK ESTATES
 CITY OF ROCKWALL, ROCKWALL COUNTY, TEXAS

REVISE END GRADE
 K.B. 5/15/01
 REVISION
 W.L.D.
 CHECKED
 K.E.B.
 DRAWN
 2/01
 DATE
 9913 STMA
 PROJECT

GRAPHIC SCALE



(IN FEET)
 1 inch = 40 ft.
 1"=4' VERT

HYDRAULIC DATA

PROJECT	9913	Box	DESIGN	Pipe	CAP	FULL	PARTIAL	PARTIAL	FLOW	Flow	Flow	FILL	DESIGN	HGL	HGL				
From	To	Length	Height	Width	DI	DI	V	V	CHT. No.	K1	R(f)	R ^{2/3}	S	S	Number				
SIM 1A															563.90				
Junction Loss	376.27	29.74	296.53		36.27	30	46.77	7.39	7.39	0.78	1.00	0.6250	0.7300	4.9877	0.0078	0.0130	2.3186	566.22	
Junction Loss	360.59	34.32	326.27		31.91	24	31.91	10.16	10.16	1.00	1.00	0.5000	0.6300	3.1416	0.0199	0.0199	-0.7543	565.46	
Junction Loss	373.86	360.59	13.27		18.09	21	18.07	7.52	7.52	1.00	1.00	0.4375	0.5763	2.4053	0.0130	0.0130	0.1730	566.12	
Junction Loss	493.33	373.86	29.47		14.95	21	14.95	6.22	6.22	1.00	1.00	0.8500	0.4375	0.5763	2.4053	0.0089	0.0089	0.4921	566.78
Junction Loss	592.46	493.33	101.13		9.56	18	10.50	5.41	6.17	0.91	1.14	1.0000	0.3750	0.5200	1.7671	0.0083	0.0100	1.5685	568.78
SIM 1B	284.93	0	284.93		5.34	18	18.22	3.02	2.86	0.29	0.88	0.3750	0.5200	1.7671	0.0026	0.0201	0.7363	563.77	

LINE TABLE

LINE	LENGTH	BEARING
L1	13.96'	S81°45'47"E
L2	4.89'	N30°48'11"E
L3	39.67'	S58°29'50"W

CURVE TABLE

CURVE	LENGTH	RADIUS	TANGENT	CH BRG	CH DIST	DELTA
C1	43.86	50.00	23.45	N33°22'02"E	42.47	50°15'37"
C2	53.96	50.00	29.94	S27°34'50"W	51.38	61°50'02"
C3	55.97	50.00	31.33	N28°44'00"E	53.10	64°08'22"
C4	39.27	75.00	20.10	N45°48'11"E	38.82	39°00'09"

9+85.68 LN. "A"
 END 21" R.C.P. & CONST.
 4'X4' TYPE "Y" INLET
 TOP = 574.58; THROAT =
 573.5; F.L. = 569.0
 HG 569.22

PAV. STA: 9+79.65
 CONST. 10' CURB INLET
 TC=571.55
 FL=567.55
 HG 567.84

PAV. STA: 8+83
 CONST. 8' CURB INLET
 TC=569.97
 FL=565.97
 HG 567.16

PAV. STA: 3+32.69
 CONST. 10' CURB INLET
 TC=566.04
 FL=562.04
 HG 563.77

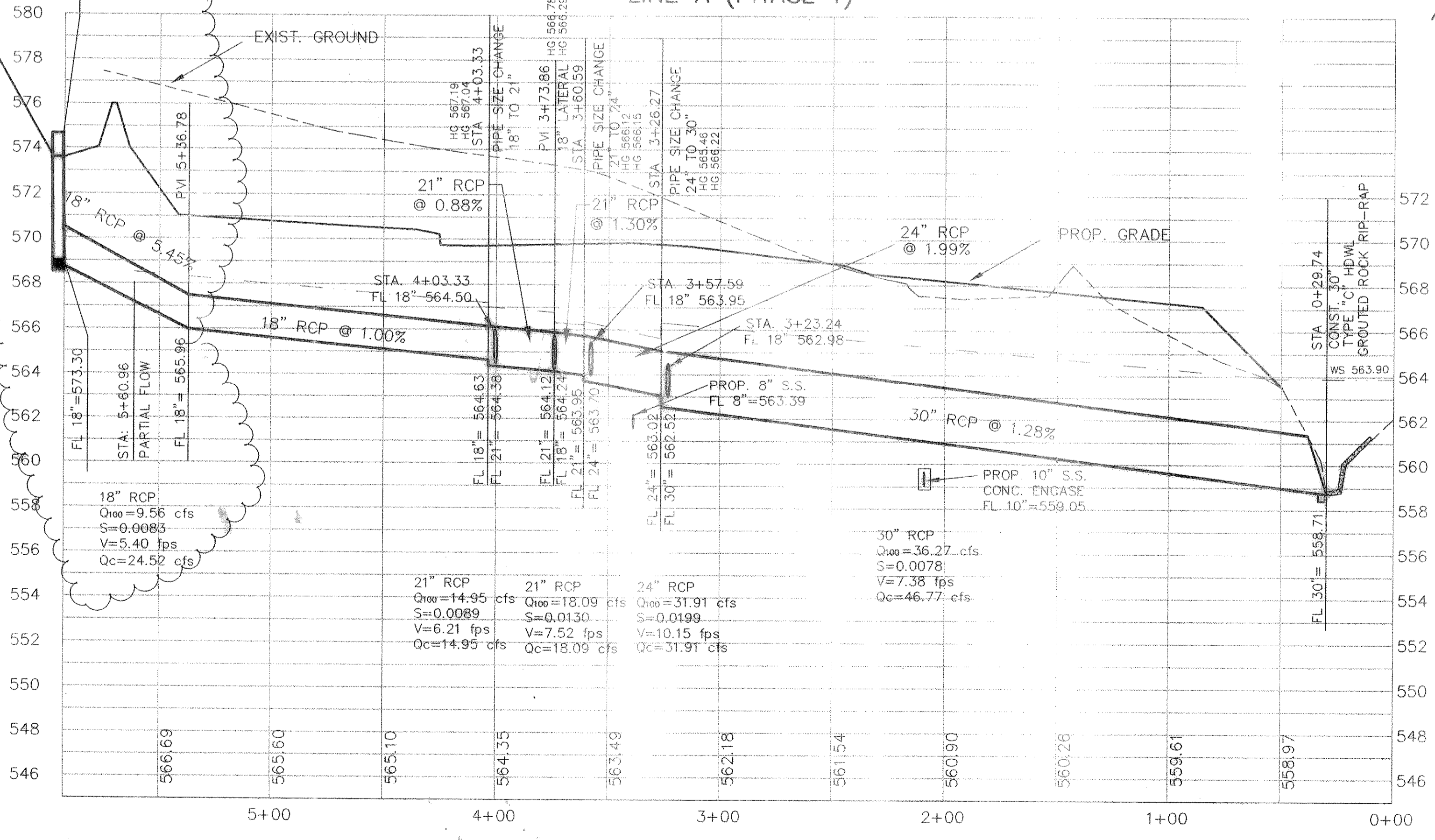
PAV. STA: 8+41.38
 CONST. 8' CURB INLET
 TC=569.81
 FL=565.81
 HG 568.14

PAV. STA: 7+93.84
 CONST. 8' CURB INLET
 TC=570.01
 FL=566.01
 HG 568.11

BRASS MONUMENT
 NORTH = 7019207.8134
 EAST = 2612434.4393
 ELEV = 570.05
 SURFACE ADJUSTED

REVISED TO CONFORM TO CONSTRUCTION RECORDS.
W.L. Douphrate DATE: 1/18/01

LINE A (PHASE 1)



LINE A-1

