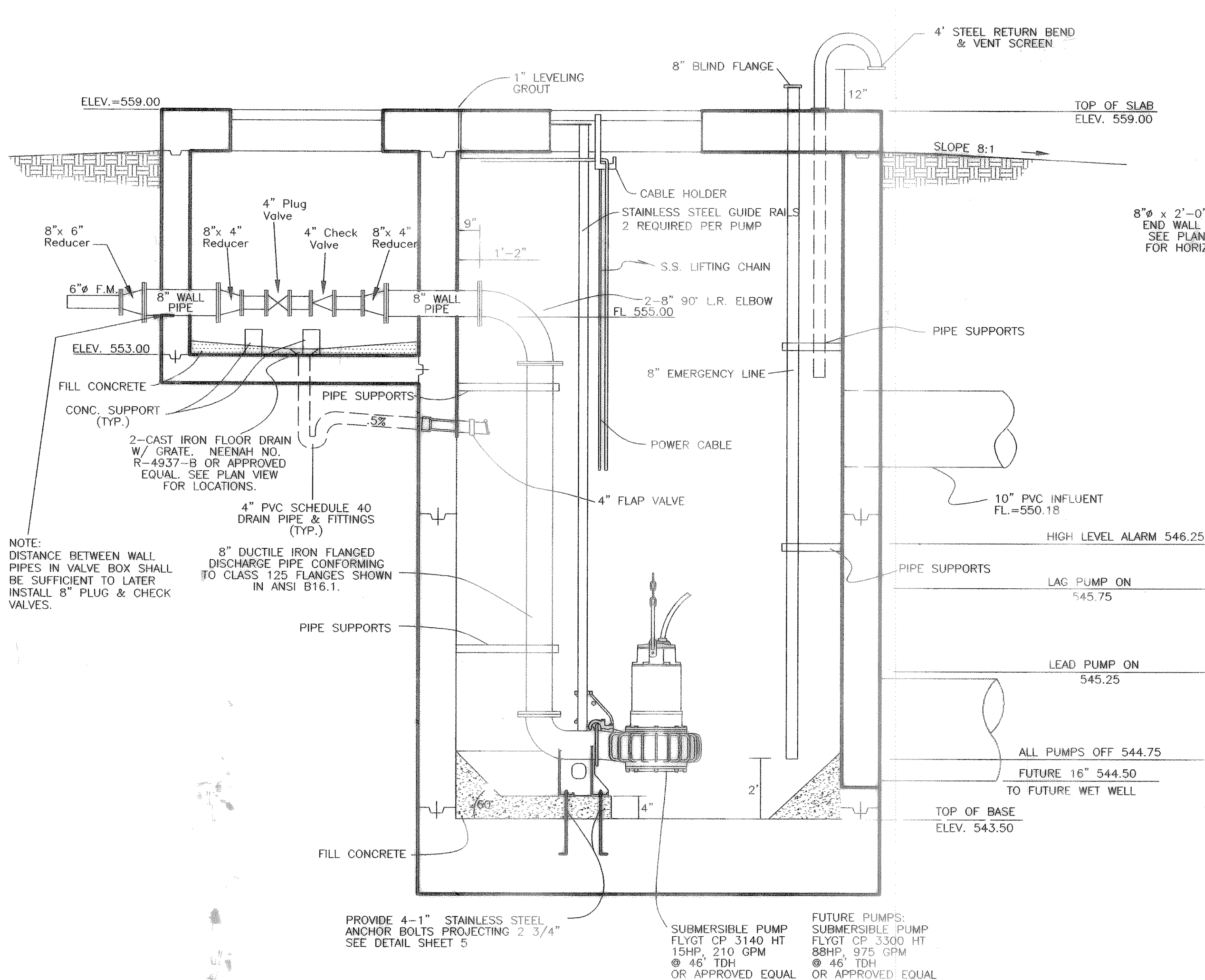


DOUPHRADE & ASSOCIATES, INC.
 ENGINEERING - PROJECT MANAGEMENT - SURVEYING
 2235 RIDGE RD., # 200 ROCKWALL, TEXAS 75087
 PHONE: (972)771-9004 FAX: (972)771-9005

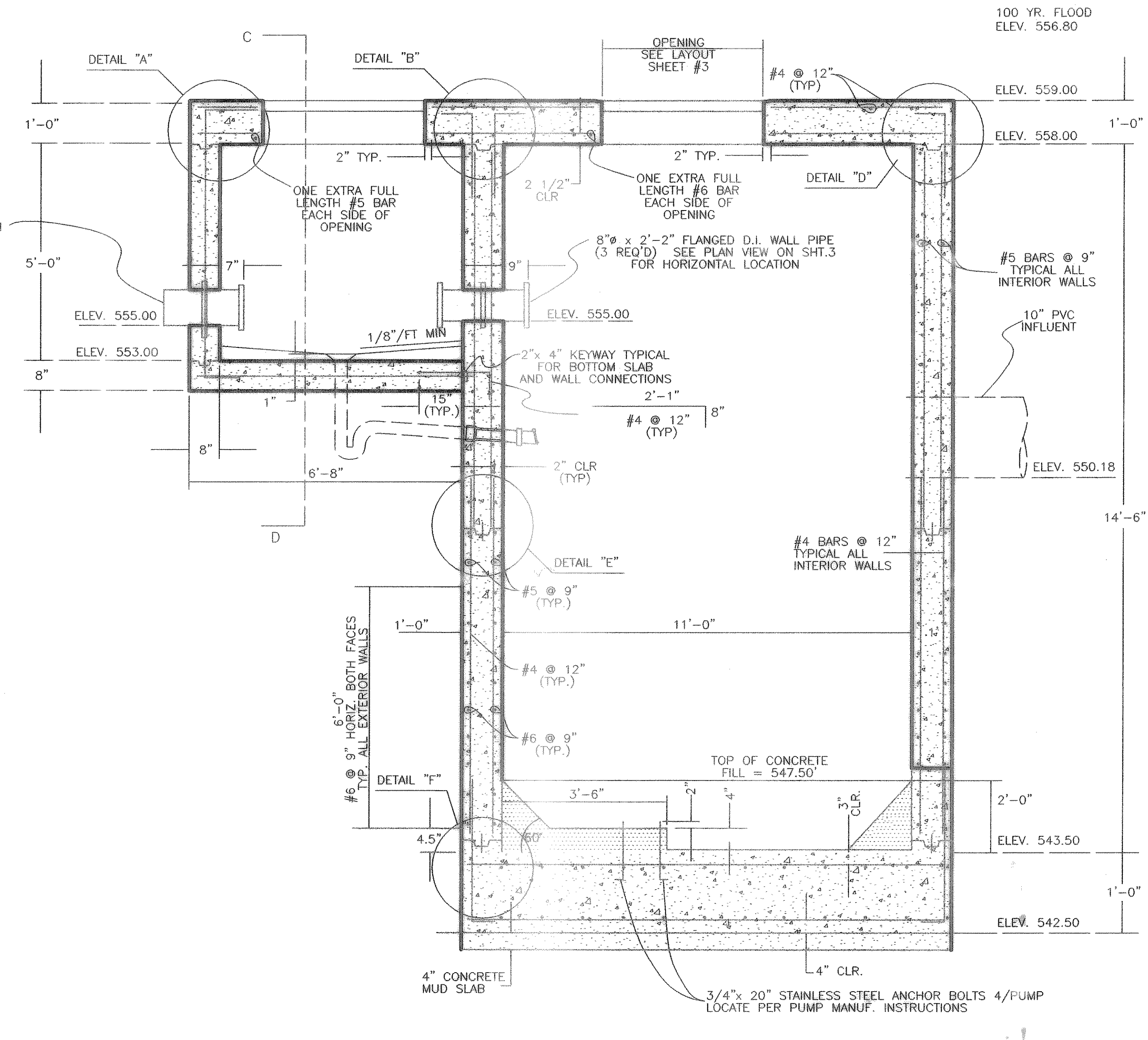
SECTION A-A PLAN
 LIFT STATION
 TIMBER CREEK ESTATES
 CITY OF ROCKWALL, ROCKWALL COUNTY, TEXAS

- GENERAL NOTES:
1. USE NON-SHRINK GROUT AT ALL STRUCTURE PENETRATIONS (SEE CONSTRUCTION NOTE 2.)
 2. SEAL ALL ELECTRIC CONDUIT PIPE WITH FLEX SEALER SO THAT NO SEWER GAS PENETRATES ELECTRICAL CONTROL CABINET.
 3. LEVEL CONTROLS SHALL BE INSTALLED IN DISTRIBUTION WELL. DEVICE SHALL BE FLOAT LEVEL CONTROL SYSTEM BY ITT FLYGT OR AN APPROVED EQUAL. ALSO, ONE (1) FLOAT SWITCH SHALL BE INSTALLED IN EACH PUMP WELL (3 REQ'D) FOR LOW LEVEL CUT-OFF AND ONE (1) FLOAT SWITCH SHALL BE INSTALLED IN DISTRIBUTION BOX/WET WELL FOR HIGH LEVEL ALARM SWITCH. CLAMP LOW LEVEL FLOW SWITCH CABLE TO PIPE TO PREVENT EXCESSIVE MOVEMENT OF FLOAT.
 4. FUTURE VALVE VAULT PIPING WILL BE 8" PIPE, 8" CHECK VALVE, AND 8" PLUG VALVE TO REPLACE ALL 4" PIPING. ALSO REMOVE THE 8" x 4" REDUCERS.

REVISED TO CONFORM TO CONSTRUCTION RECORDS.
W.L. Douphrate II DATE: 12/19/01



SECTION A-A
 N.T.S.



LIFT STATION
 SECTION A-A
 1/2" = 1'-0"

REVISION	
W.L.D.	
CHECKED	
K.E.B.	
DRAWN	
7/25/00	
DATE	
9913 LS3b	
PROJECT	