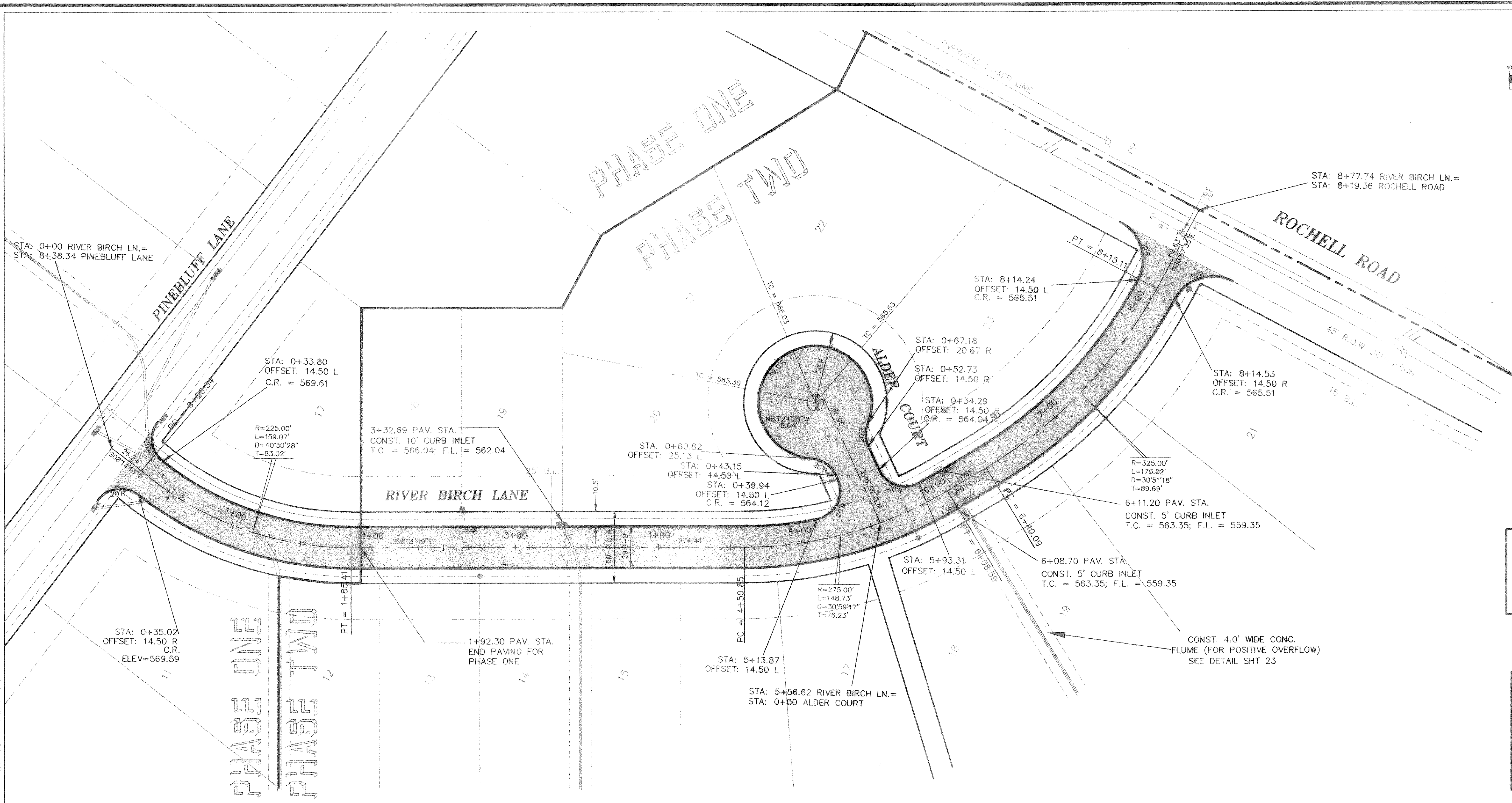
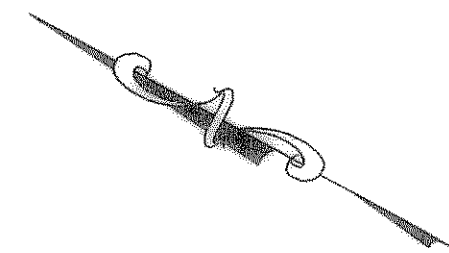
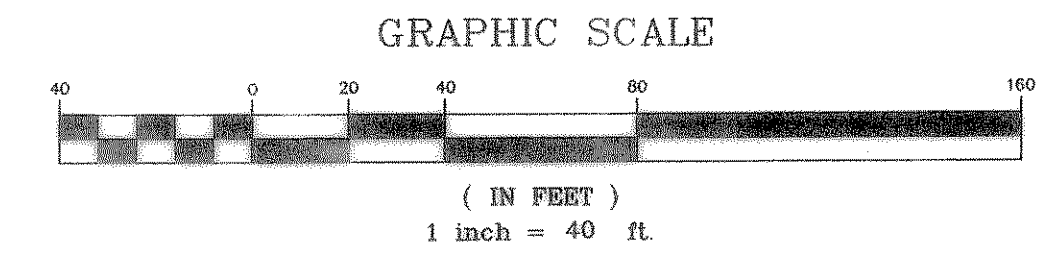


THE SEAL APPEARING ON THIS DOCUMENT WAS AUTHORIZED BY W.L. DOUPHRATE, NO. 80102 ON 1/3/94

**DOUPHRATE & ASSOCIATES, INC.**  
 ENGINEERING - PROJECT MANAGEMENT - SURVEYING  
 2235 RIDGE RD., # 200 ROCKWALL, TEXAS 75087  
 PHONE: (972)771-9004 FAX: (972)771-9005

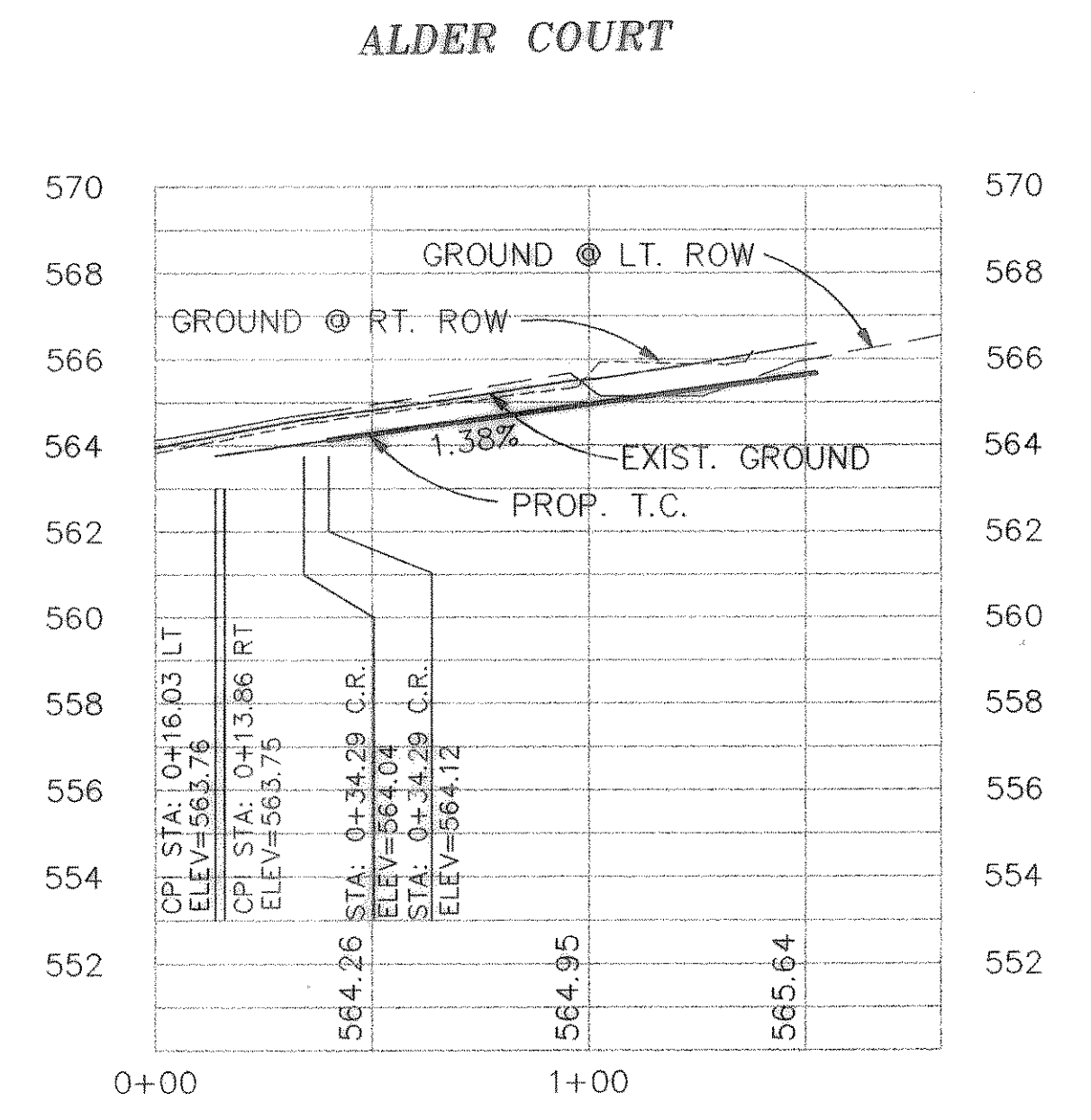
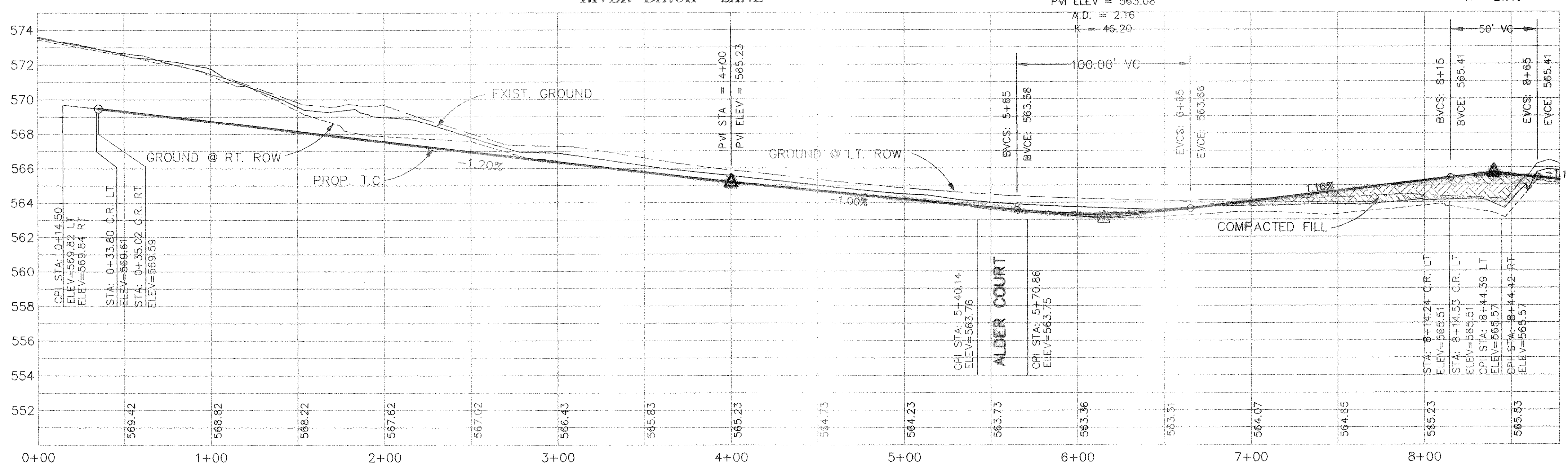


REVISED TO CONFORM TO CONSTRUCTION RECORDS.  
 DATE: 12/18/02

**BENCHMARK:**  
 T.C. CENTERLINE OF INLET ON WEST SIDE OF SILVER VIEW LANE BETWEEN LOTS 4 & 5, BLOCK B, OF STERLING FARMS ADDITION  
 ELEV: 599.65

HIGH POINT ELEV = 565.55  
 HIGH POINT STA = 8+39.98  
 PVI STA = 8+40  
 PVI ELEV = 565.70  
 A.D. = -2.33  
 K = 21.46

LOW POINT ELEV = 563.35  
 LOW POINT STA = 6+11.20  
 PVI STA = 6+15  
 PVI ELEV = 563.08  
 A.D. = 2.16  
 K = 46.20



**PLAN & PROFILE**  
**RIVER BIRCH LANE & ALDER COURT**  
**TIMBER CREEK ADDITION**  
 CITY OF ROCKWALL, COUNTY OF ROCKWALL

REVISION	W.L.D.
CHECKED	K.E.B.
DRAWN	07/00
DATE	9913 PVI5
PROJECT	35 OF