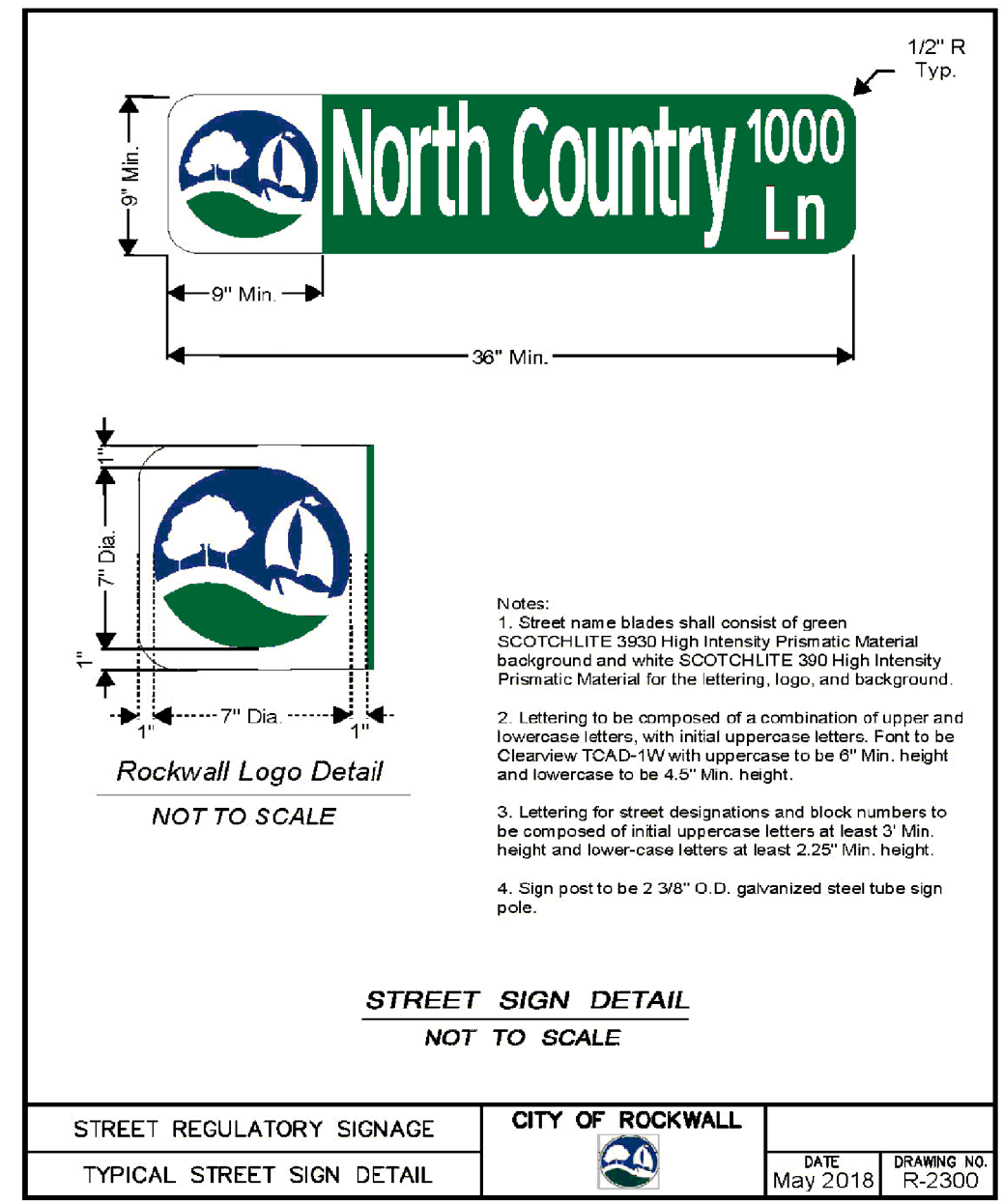


**LEGEND**

	STOP AND/OR STREET SIGN AS LABELED
	STAND ALONE STREET LIGHT
	SPEED LIMIT SIGN AS LABELED
	STREET NAME CHANGE



**Street and Regulatory Signage**

The developer shall arrange for the installation of all pavement signing, regulatory, warning and guide signs, including posts, as shown on the plans or as directed by the City. Street name signs shall be installed at each intersection. Examples of regulatory, warning, information and guide signs are as follows:

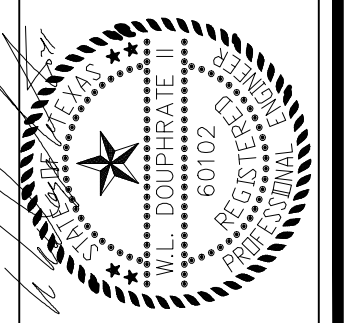
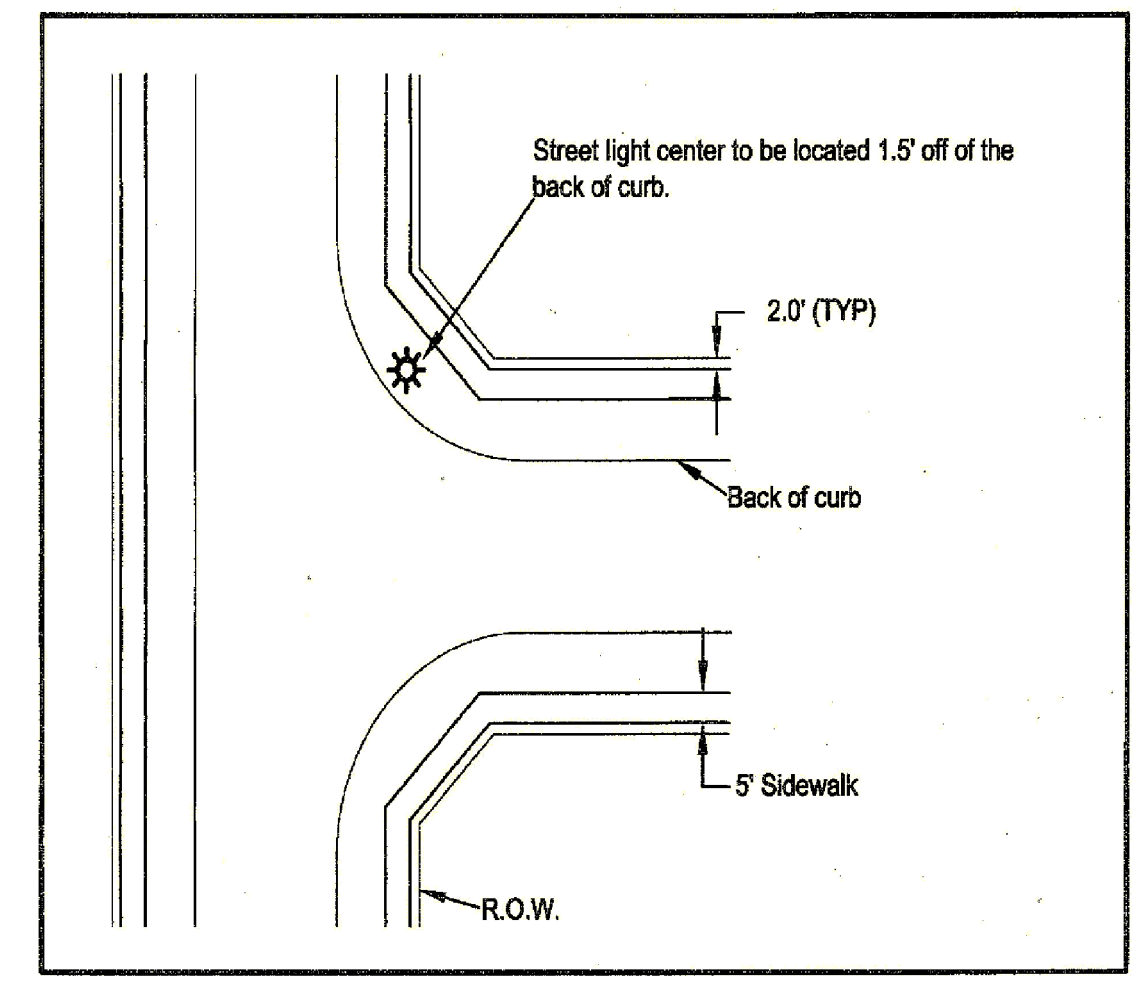
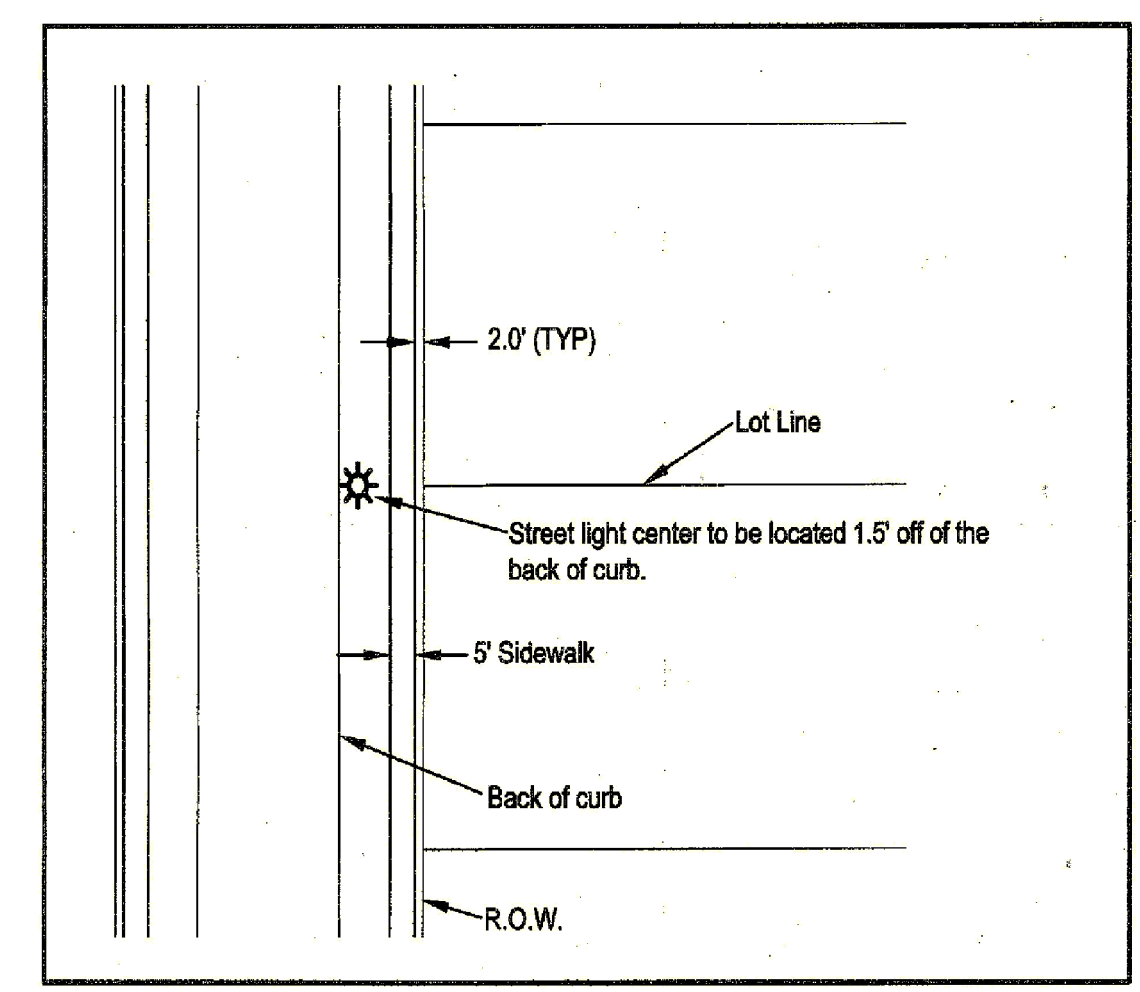
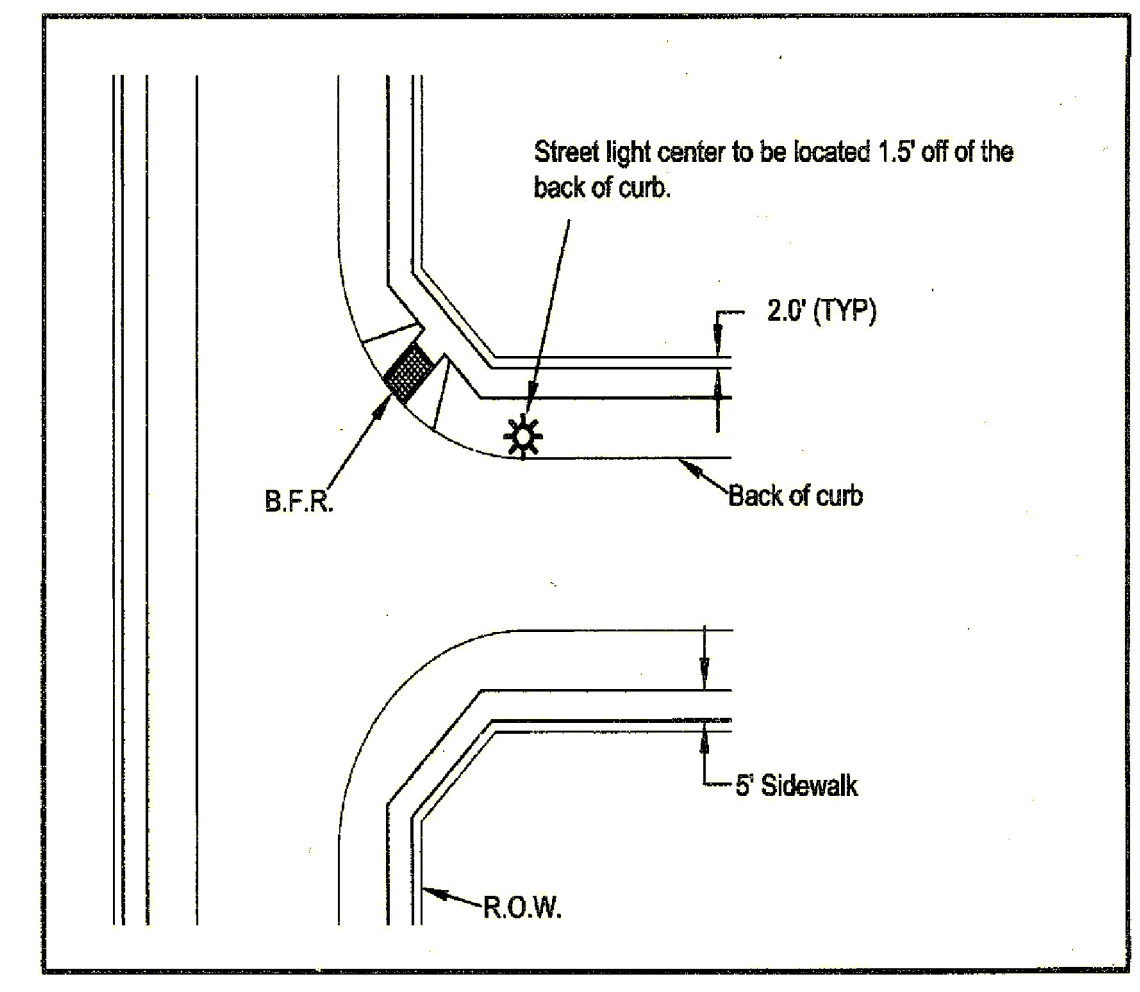
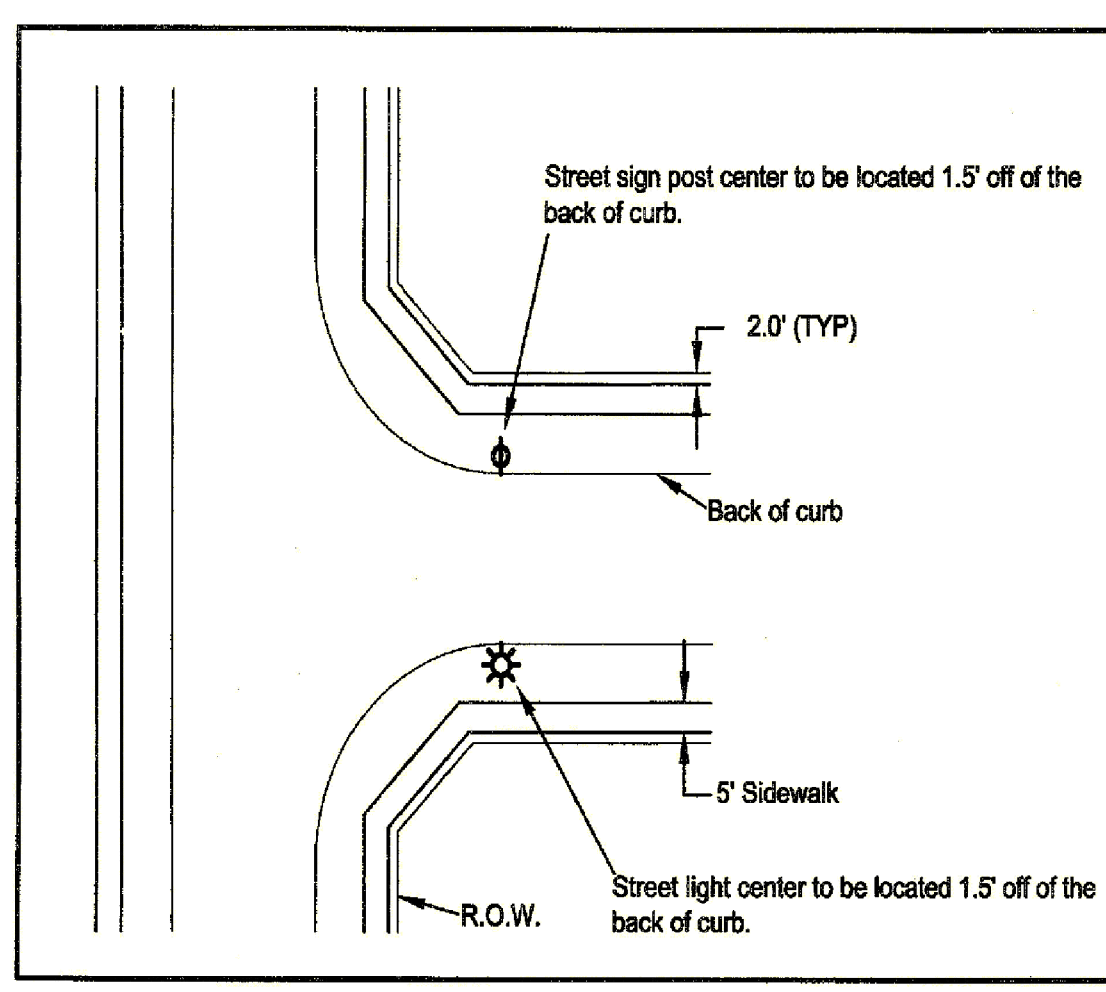
- Regulatory signs shall include, but are not limited to, STOP, ALL-WAY, YIELD, KEEP RIGHT and speed limit signs.
- Warning signs shall include, but are not limited to, DEAD END, NO OUTLET, DIVIDED ROAD, DIP, and PAVEMENT ENDS.
- Guide signage shall include, but are not limited to, street name signs, DETOUR, direction arrow and advance arrow.

Regulatory signs should be used only where justified by engineering judgment or study. All signage plans shall be reviewed and approved by the City of Rockwall Engineering Department and be designed in accordance with the principles described in the current MUTCD.

- A detailed street and regulatory signage plan is to be submitted to the City of Rockwall Engineering Department. All signs shall be shown in the engineering plans for review and approval. The signage plan shall be shown on a separate sheet(s) & pavement marking layout sheet or as a part of the plan & profile sheet. The plan shall identify the specific sign designation, size and location for each sign. Sign standards shall also be included in the engineering plans.
- All signage installed shall comply with the current "Texas Manual on Uniform Traffic Control Devices" and the "Standard Highway Sign Designs for Texas." The sign layout drawings shall show the color and dimensions of all sign face legends comprising including background color, legend color, borders, symbols, letter size and style.
- For a street with a cut-to-end, a standard W 14-2a shall be mounted over the street name blade if the cut-to-end is not clearly visible from the adjoining roadway, or is located in excess of 400 linear feet from the adjoining roadway.
- Sign posts shall be 2 3/4" O.D. galvanized steel tube sign post with a galvanized finish.
- Sign clamps and brackets shall be high strength aluminum.
- Street name sign blades shall be double-sided with rounded corners.
- Street Name Blades shall be nine-inch (9") tall flat aluminum. The blades shall be 0.050 inches thick and be a minimum of 36" long.
- The lettering for the street signs shall be 3M Scotchlite Series 3930 High Intensity prismatic patterned sheeting shall be used for street, regulatory, warning signs and shall be high retro-reflective sheeting grade logo graphics. The street sign background shall be green and the legend shall be white.
- The street sign blade must incorporate the current City of Rockwall logo. The logo shall consist of white 3M Scotchlite Series 3930 high intensity prismatic material (product code 3930).
- Block Numbers are required on all street name blades and shall be located on the top right corner of the street blade.
- The lettering for the street blades shall be composed of a combination of lower-case letters with initial upper-case letters. The Clearview TCAD-TW font shall be used. The lettering shall be composed of initial upper-case letters of at least 6 inches in height and lower case letters of at least 4.5 inches in height. For supplementary lettering to indicate the type of street (such as Street, Avenue or Road) shall be composed of initial upper-case letters at least 3-inches in height and lower-case letters at least 2.25 inches in height. Abbreviations may be used (for example St., Ave., or Rd) except the street name itself. The supplementary lettering shall be located at the lower right corner of the street blade, under the block number.
- The street blade sign shall consist of green 3M Scotchlite Series 3930 high intensity prismatic material background (product code 3937). The lettering shall consist of white 3M Scotchlite Series 3930 high intensity prismatic material (product code - 3930). The background sheeting shall be white 3M 3990 high intensity prismatic material. The background material shall be applied to the full width and height of the sign blank leaving no metal exposed. The background material shall be one continuous piece of material. Patching of background material is not allowed and any sign with patching material of any type will be rejected by the City.
- Alternative Option:  
As an alternative, the foreground color may be green transparent Scotchlite ElectroCut 177 film (E.C. film). Lettering shall be cut out and removed producing a single continuous piece of green transparent film material.

The developer shall be responsible for furnishing and installing all regulatory signage, warning signage and street name signage along with all the necessary sign mounts in accordance with this approved engineering plans. A separate production sign shall be submitted to the Traffic Signs & Pavement Marking Supervisor for review and approval. The signs shall be directed to the City of Rockwall Service Center located at 1600 Airport Road, Rockwall, Texas 75087. The signs shall be submitted at least 10 days prior to the scheduled installation date.

All street and regulatory signage shall be installed, inspected and approved, prior to final acceptance of the project. This inspection typically takes place as part of the engineering department's final walkover. Any sign related issues/issues will be noted on the projects final punch list.



THE SEAL APPEARING ON THIS DOCUMENT WAS AUTHORIZED BY W.L. DOUPHRADE IN TEXAS P.E. LICENSE NO. 60102 ON DATE: MAY 30, 2018

**DOUPHRADE & ASSOCIATES, INC.**  
ENGINEERING • PROJECT MANAGEMENT • SURVEYING  
2235 RIDGE RD., # 200 ROCKWALL, TEXAS 75087  
PHONE: (972)771-9004 FAX: (972)771-9005

**SIGN AND LIGHTING PLAN**  
THE STANDARD - ROCKWALL  
CITY OF ROCKWALL,  
ROCKWALL COUNTY, TEXAS

REVISION	
W.L.D.	CHECKED
G.C.W.	DRAWN
MARCH, 2018	DATE
1703 SIGN-LIGHT	PROJECT

REVISED TO CONFORM TO CONSTRUCTION RECORDS.  
*W. Douphrate* DATE: 8-10-20