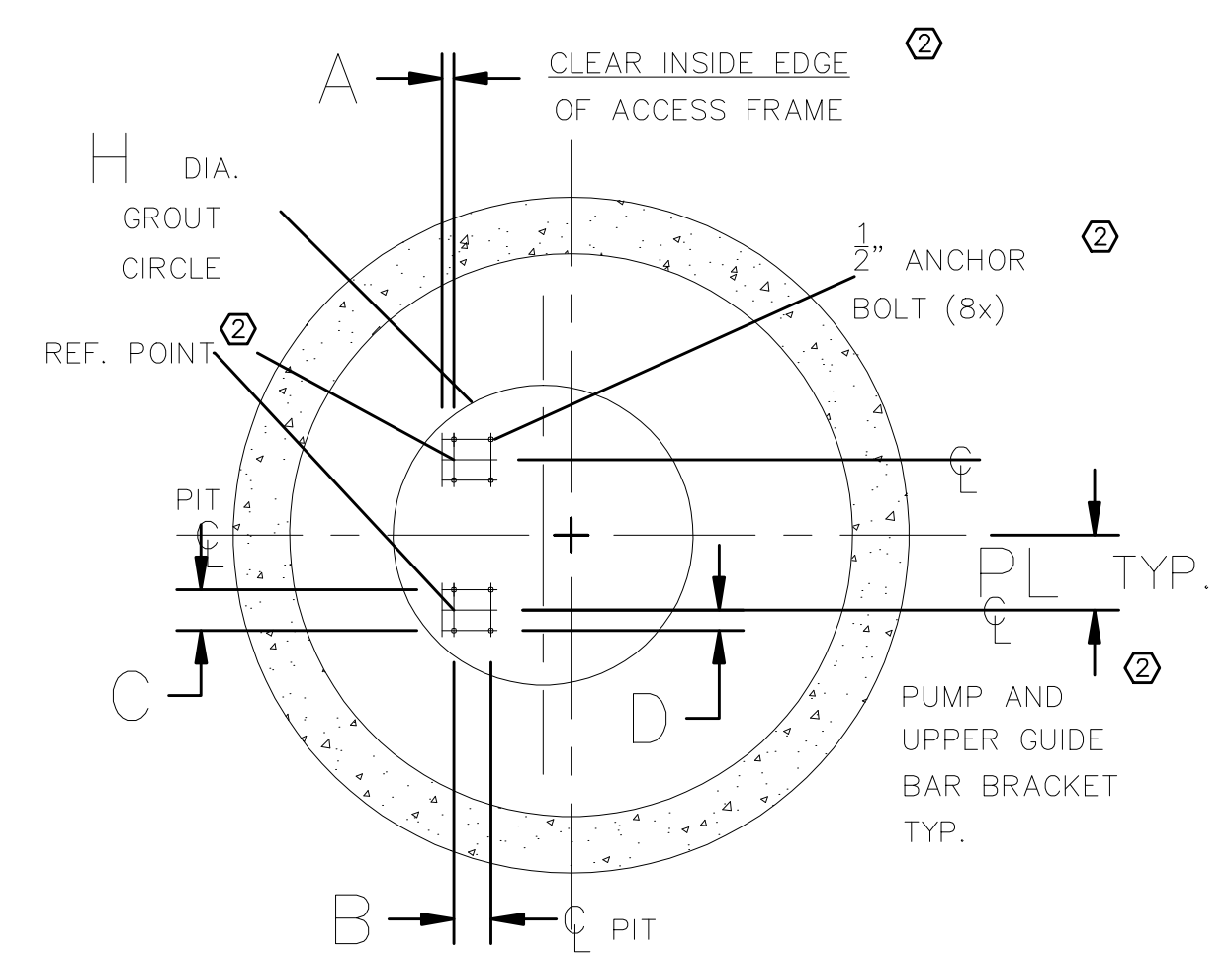


SECTION

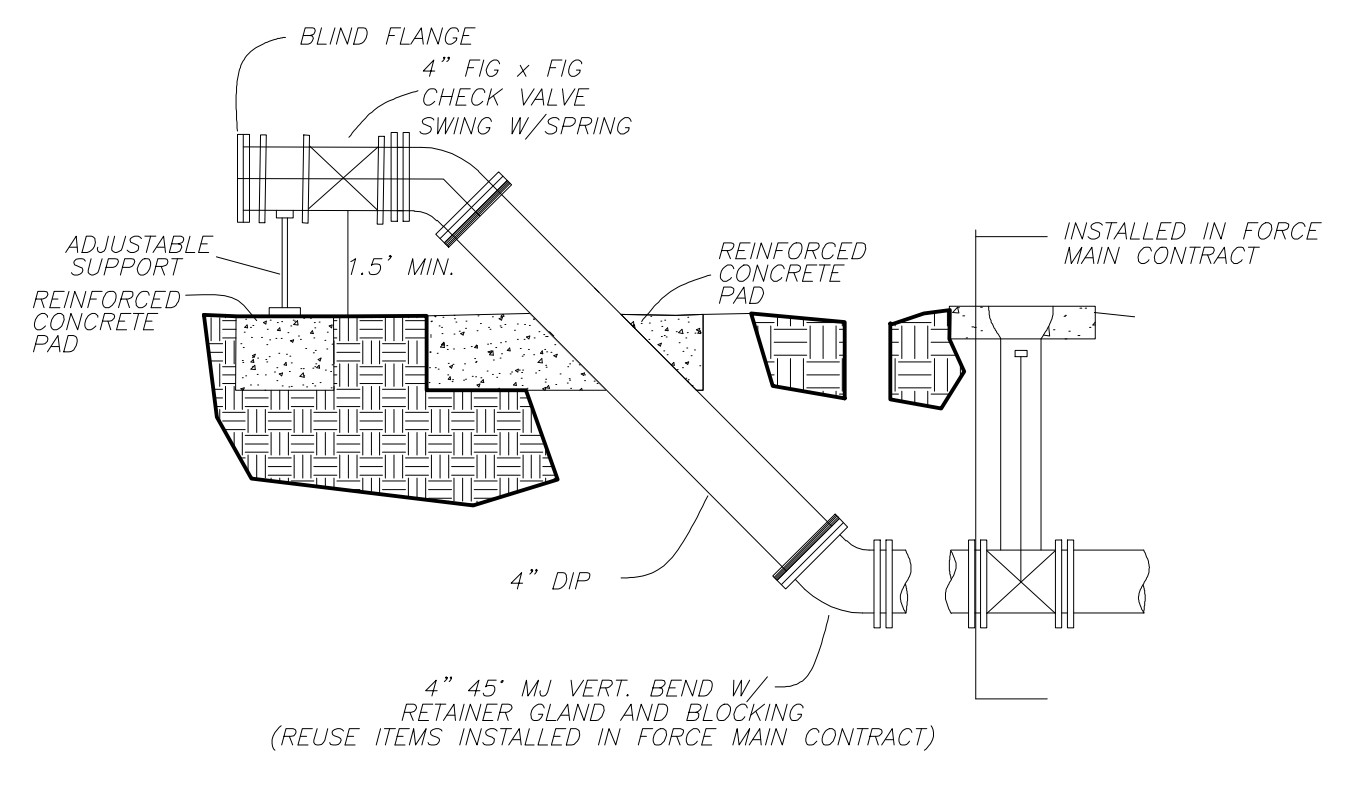
NOTES:

- INDICATES INFORMATION TO BE DETERMINED BY OTHERS.
- LOCATE ANCHOR BOLTS USING CLEAR INSIDE EDGE OF ACCESS FRAME AND CENTER LINE OF PUMP AS REF. POINT. BOLT LOCATIONS MUST BE HELD TO MAINTAIN EXACT POSITION OF PUMP RELATIVE TO ACCESS FRAME.
- ACCESS FRAME TO BE CAST INTO WET WELL ROOF.
- COVER SHOWN IS FOR STANDARD DUTY ANGLE FRAME. FOR ADDITIONAL DIMENSIONS ON STANDARD DUTY TROUGH FRAME, HEAVY DUTY ANGLE FRAME AND HEAVY DUTY TROUGH FRAME, CONSULT ITT FLYGT CORP. ENGINEERING DEPT.
- CONFIGURATION AND DIMS. SHOWN ARE SUGGESTED REQUIREMENTS ONLY. ALL DETAILS, INCLUDING SIZING OF PIT, TYPE, LOCATION AND ARRANGEMENT OF VALVES AND PIPING, ETC. ARE TO BE SPECIFIED BY THE CONSULTING ENGINEER AND ARE SUBJECT TO HIS APPROVAL.
- EMERGENCY BY-PASS LINE SHALL NOT BE INSTALLED UNDER ANY CONCRETE, PAVING, SLAB, BUILDING, E.T.C.
- CONTRACTOR TO GROUT FILL THE BOTTOM OF WETWELL AS RECOMMENDED BY PUMP SUPPLIER.
- TELEMETRY TO BE PROVIDED BY KIMARK IN ACCORDANCE WITH ROCKWALL REQUIREMENTS. CONTACT THE CITY'S SCADA CONSULTANT (SAUL SANCHEZ WITH KIMARK 817-416-8881). FLYGT CONTROL PANEL W/PLC SHALL HAVE PLC AND RADIO EQUIPMENT PROVIDED BY KIMARK INSTALLED IN PANEL BY PANEL BUILDER.
- CONTRACTOR TO INSTALL PASSIVE BIOTEG REBF SERIES BIOFILTER FOR ODOR CONTROL CONTACT CONTACT RJM COMPANY 360-828-5732
- ALL JOINTS OF THE WET WELL SHALL BE LOCATED ABOVE THE OPERATING LEVELS(WET ZONE). THE BASE SHALL BE INTEGRALLY CAST WITH THE FIRST SECTION OF PIPE. ALL JOINTS NEED TO BE SEALED WITH O-RING SEALS AND THE INTERIOR AND EXTERIOR OF EACH JOINT NEED TO BE SEALED WITH NON-SHRINK GROUT. JOINTS IN THE VALVE VAULT SHALL BE TREATED THE SIMILAR TO THE WET WELL.
- ALL EXPOSED CONCRETE AND GROUT SURFACES INSIDE THE WET WELL NEED TO BE COATED WITH A PROTECTIVE COATING SYSTEM OR USE CON SHEILD WET WELL TO PREVENT DEGRADATION OF THE CONCRETE AND GROUT SURFACES BY SEWER GASES. THESE SURFACES BE ABRASIVE BLASTED TO SSPC-SP13/NACE 6 PRIOR TO APPLICATION OF THE COATING. THE COATING SYSTEM SHALL BE RAVEN LINING APPROVED EQUAL.
- THE EXTERIOR OF ALL DUCTILE IRON PIPING TO BE COATED WITH A PROTECTIVE COATING SYSTEM. THE PIPING SHALL BE COATED WITH TWO 6MIL DFT COATS (12MIL TOTAL) OF DEVOE BAR-RUST 233H HIGH PERFORMANCE EPOXY COATING OR APPROVED EQUAL. PIPE THAT IS DIRECTLY BURIED ALSO NEEDS TO BE INSTALLED IN POLYETHYLENE BAGGING.
- THE INTERIOR OF ALL DUCTILE IRON PIPING SHALL BE LINED WITH A MANUFACTURER APPLIED COATING TO PROTECT THE PIPING FROM CORROSION.
- THE CONTRACTOR SHALL PURCHASE THE BASE ELBOW ANCHORS DIRECTLY FROM ITT FLYGT. BASE ELBOW ANCHORS SHALL BE LOCATED AND INSTALLED IN ACCORDANCE WITH RECOMMENDATIONS FROM ITT FLYGT.
- THE CONTRACTOR TO PROVIDE IN-SITU PUMP PERFORMANCE TESTING TO VERIFY EXPECTED FLOW RATES PRIOR TO ACCEPTANCE OF THE PROJECT.
- THE CONTRACTOR SHALL PRESSURE TEST FORCE MAIN CONCURRENT WITH WET WELL FILL AND PUMP DRAW DOWN RATES
- THE CONTRACTOR SHALL INSTALL A THREADED OUTLET ON THE DISCHARGE PIPING IN ORDER TO ALLOW INSTALLATION OF A PRESSURE GAUGE

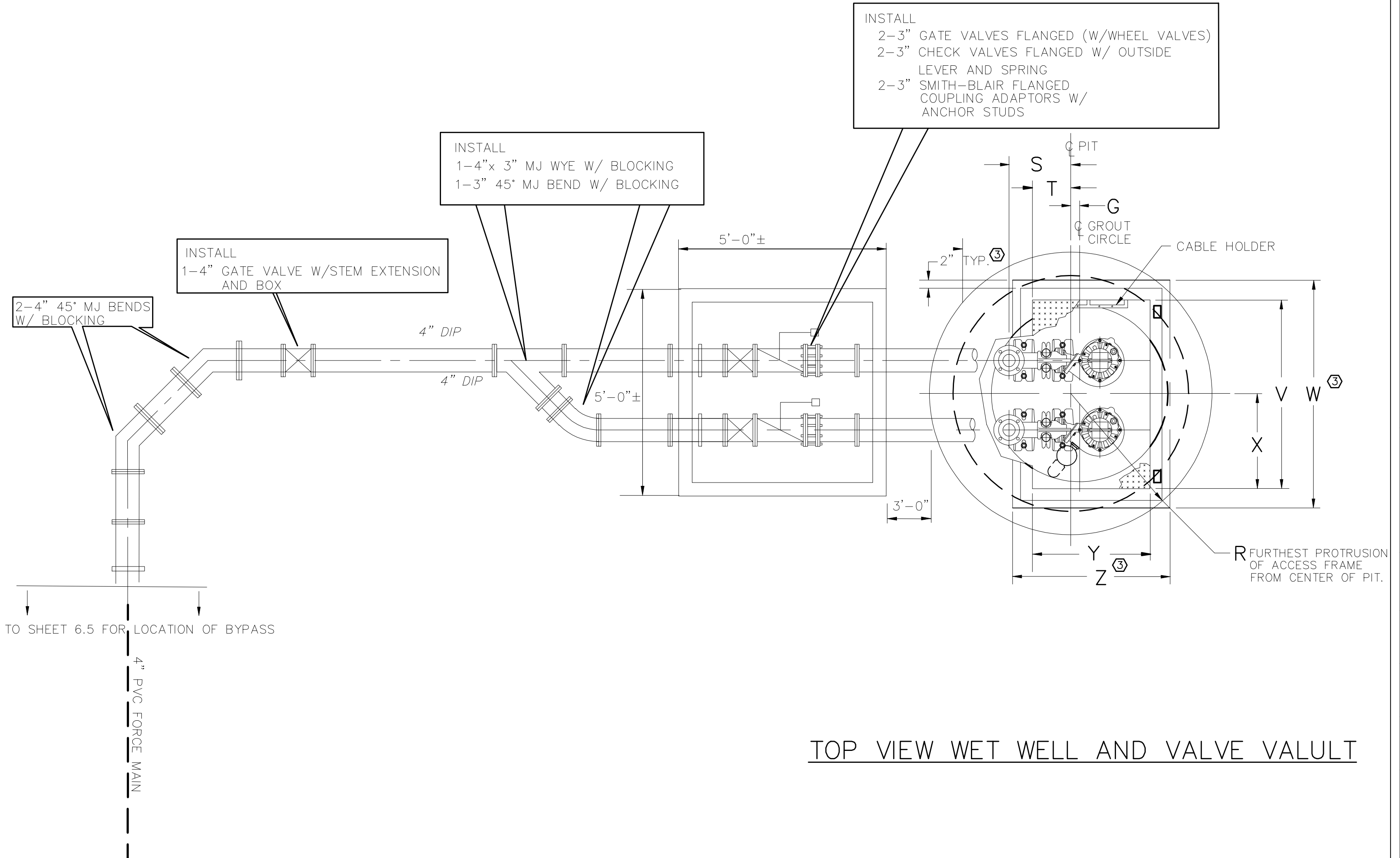
REVISED TO CONFORM TO CONSTRUCTION RECORDS.
W. W. [Signature] DATE: 8-10-20



BASE SECTION



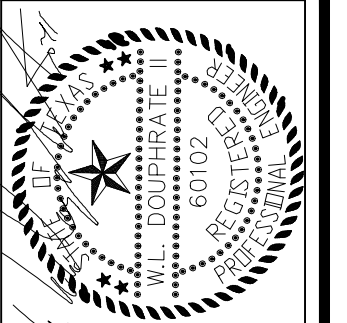
EMERGENCY BY-PASS DETAIL



TOP VIEW WET WELL AND VALVE VALULT

ALL DIMENSIONS IN INCHES

NOM. SIZE	VERSION	STATION												COVER										
		A	B	C	D	F	G	H	R	S	T	U	CV	M	W	P	L	SIZE	V	W	X	Y	Z	AD
3"	SH	2 1/4	9 13/16	7 7/8	3 15/16	15 3/4	3	32	36	13 15/16		72	8 7/8	12	8	FLE-6	42	48	48	54	24	36	42	4



THE SEAL APPEARING ON THIS DOCUMENT IS THE PROPERTY OF W. W. DOUPHRE & ASSOCIATES, INC. NO. 60102, F-686, ON DATE: APRIL 18, 2018

DOUPHRE & ASSOCIATES, INC.
 ENGINEERING • PROJECT MANAGEMENT • SURVEYING
 2235 RIDGE RD., # 200 ROCKWALL, TEXAS 75087
 PHONE: (972)771-9004 FAX: (972)771-9005

LIFT STATION PLAN
 THE STANDARD
 ROCKWALL
 CITY OF ROCKWALL, ROCKWALL COUNTY, TEXAS

REVISION	WLD. CHECKED	GC.W. DRAWN	DATE	PROJECT
			04/18	17013
				63