

INSTALL:  
1-8" VALVE

INSTALL:  
3-8" 22-1/2" BENDS

INSTALL:  
1-8" X8" TEE  
2-8" VALVES  
1-8" 22-1/2" BEND

INSTALL:  
2-FH COMPLETE  
W/TEE, VALVE,  
PIPING, AND BLOCKING

INSTALL:  
2-8" 45° BENDS  
1-8" 22-1/2" BEND

INSTALL:  
2-FH COMPLETE  
W/TEE, VALVE,  
PIPING, AND BLOCKING

INSTALL:  
1-8" X8" TEE  
3-8" VALVES

INSTALL:  
1-8" VALVE  
1-FH COMPLETE  
W/TEE, VALVE,  
PIPING, AND BLOCKING

REMOVE PLUG  
CONN. TO EXIST. 8" WATER  
INSTALL:  
2-8" 90° BENDS

INSTALL:  
1-8" X8" TEE  
2-8" VALVES  
1-22-1/2" BEND  
1-FH COMPLETE  
W/TEE, VALVE,  
PIPING, AND BLOCKING

INSTALL:  
1-8" X8" TEE  
3-8" VALVES  
1-FH COMPLETE  
W/TEE, VALVE,  
PIPING, AND BLOCKING

INSTALL:  
1-8" X8" TEE  
1-8" VALVE

INSTALL:  
1-12" X12" TEE  
2-12" VALVES  
10' L.F. -12" STUBOUT  
1-12" PLUG  
1-12" X8" REDUCER  
1-8" VALVE

INSTALL:  
1-8" 22-1/2" BEND

CUT EX. 8" STUBOUT  
PLUG EX. 8" STUBOUT TO N.W.  
INSTALL:  
2-8" 45° BENDS

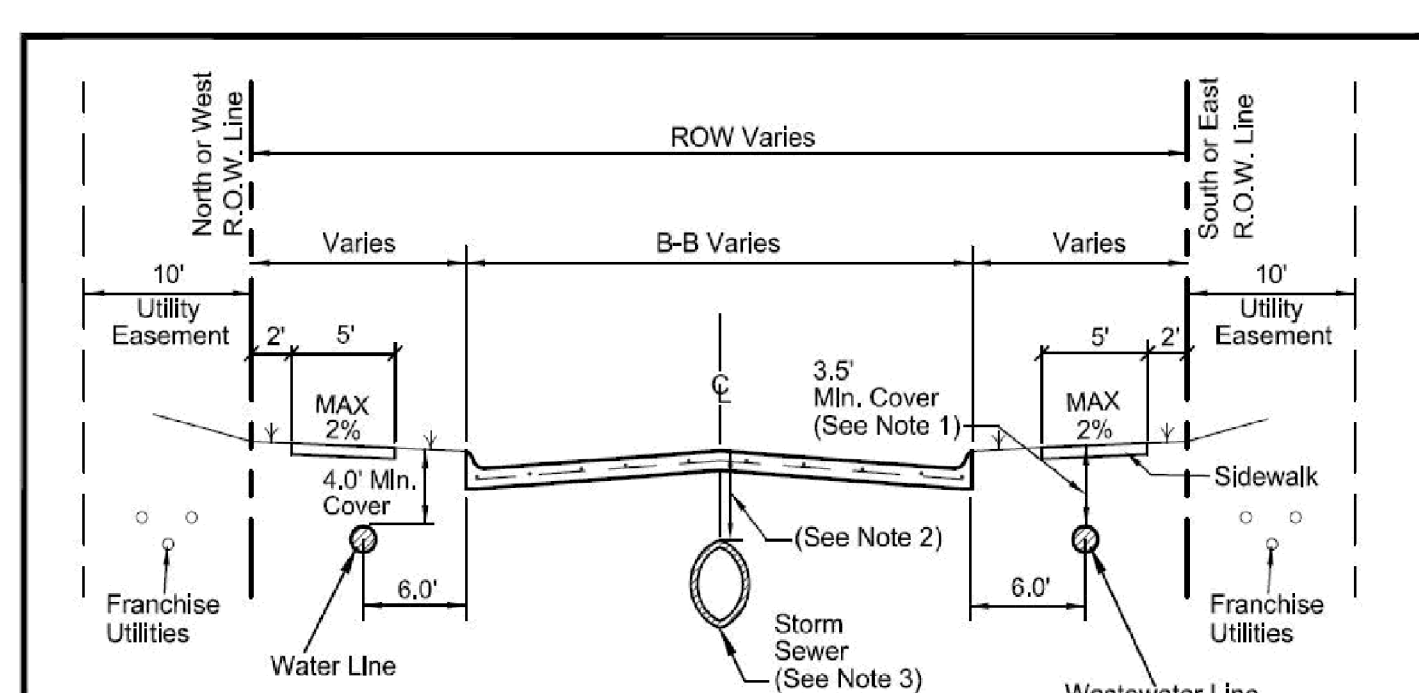
INSTALL:  
1-FH COMPLETE  
W/TEE, VALVE,  
PIPING, AND BLOCKING

INSTALL:  
18" STL CASING EXTEND  
5' PAST BACK OF CURB  
MIN 60" DEPTH

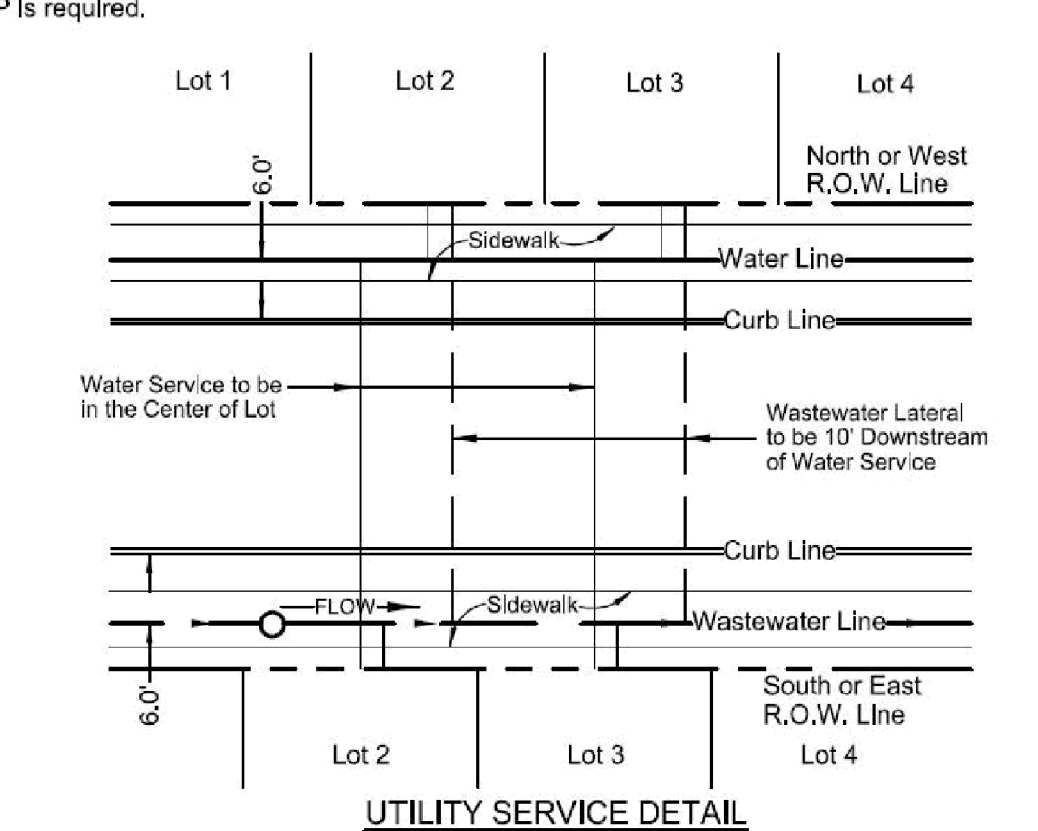
INSTALL:  
2-12" 45° BENDS

REMOVE 12" PLUG  
CONN. TO EXIST.  
12" WATER

NOTE:  
1. WATER SHALL BE CLASS 200 DR 14  
2. LOWER WATER LINES AT STORM  
SEWER CROSSINGS TO MAINTAIN  
A MINIMUM OF 2' SEPARATION.  
SEE SHT. 7.1, 7.2, & 7.3

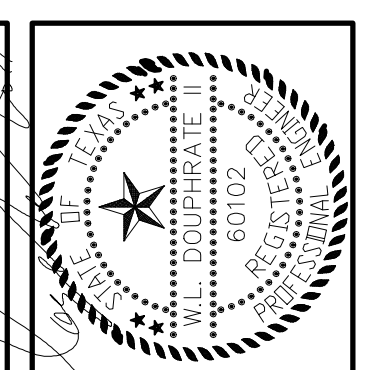
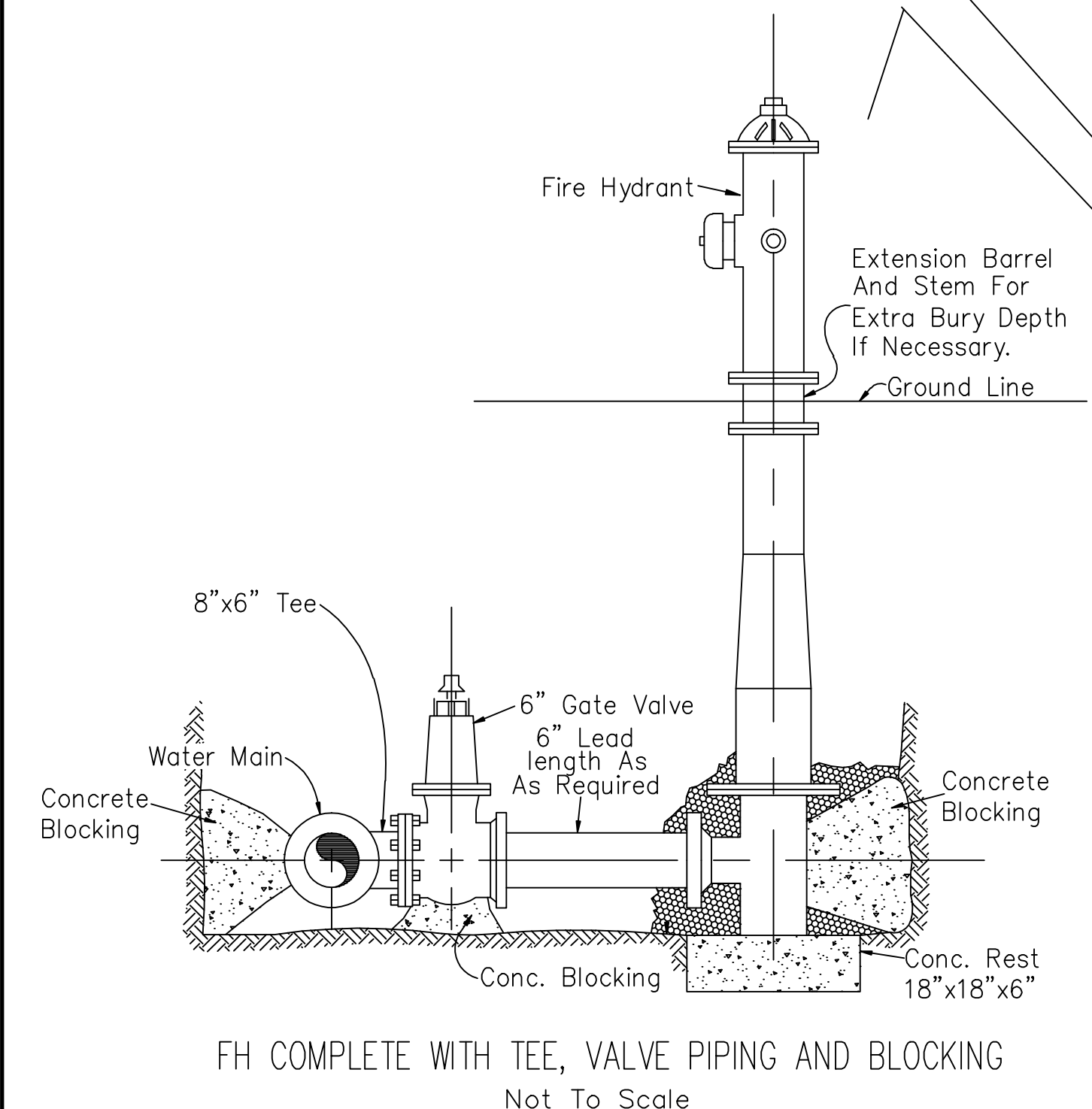


NOTE:  
1. If wastewater line has a cover greater than ten feet (10') than pipe shall be minimum SDR 26 and no services allowed.  
2. If cover is two (2) feet or less than Class IV RCP is required.  
3. Horizontal location of storm sewer for divided roads to be determined by design engineer. Not to be placed in the parkway.



GENERAL UNDERGROUND CONDUIT	CITY OF ROCKWALL	DATE	DRAWING NO.
UTILITIES LOCATION DETAIL		AUG. '15	R-3000

REVISED TO CONFORM TO CONSTRUCTION RECORDS.  
*[Signature]* DATE: 8-10-20



THE SEAL APPEARING ON THIS DOCUMENT WAS AUTHORIZED BY ME AS A PROFESSIONAL ENGINEER ON DATE: APRIL 18, 2018

DOUPHRATE & ASSOCIATES, INC.  
ENGINEERING • PROJECT MANAGEMENT • SURVEYING  
2235 RIDGE RD., # 200 ROCKWALL, TEXAS 75087  
PHONE: (972)771-9004 FAX: (972)771-9005

WATER PLAN  
THE STANDARD  
ROCKWALL  
CITY OF ROCKWALL  
ROCKWALL COUNTY, TEXAS

REVISION	WLD.
CHECKED	DAC.
DRAWN	II
SCALE	1"=60'
	1"=6V
MARCH, 2018	DATE
17013	PROJECT
60	