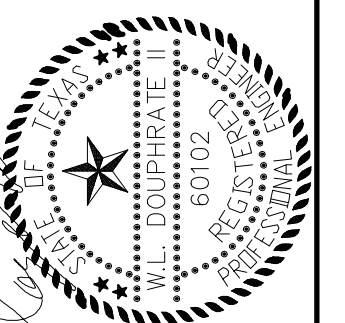


REVISED TO CONFORM TO CONSTRUCTION RECORDS.  
 DATE: 8-10-20

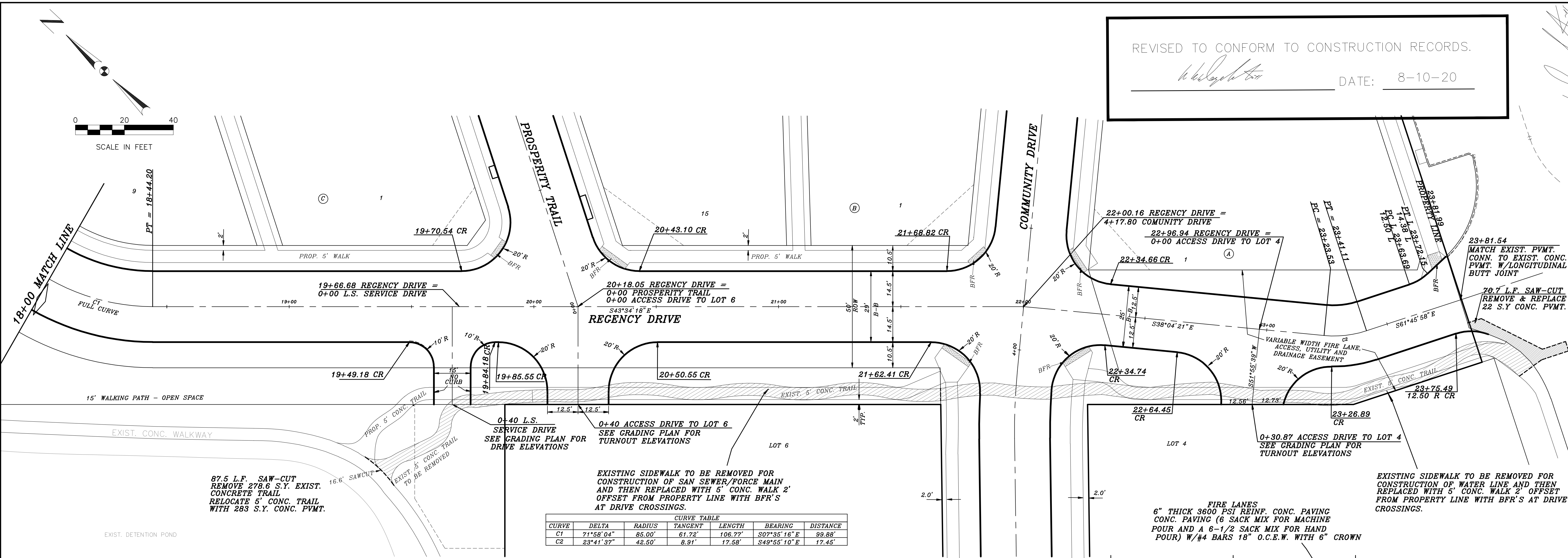


THE SEAL APPEARING ON THIS DOCUMENT WAS AUTHORIZED BY THE BOARD OF PROFESSIONAL ENGINEERS OF THE STATE OF TEXAS. NO. 60102, P.E., W.L.D., DATE: APRIL 11, 2018.

DOUPHRAITE & ASSOCIATES, INC.  
 ENGINEERING + PROJECT MANAGEMENT + SURVEYING  
 2235 RIDGE RD., # 200 ROCKWALL, TEXAS 75087  
 PHONE: (972) 771-9004 FAX: (972) 771-9005

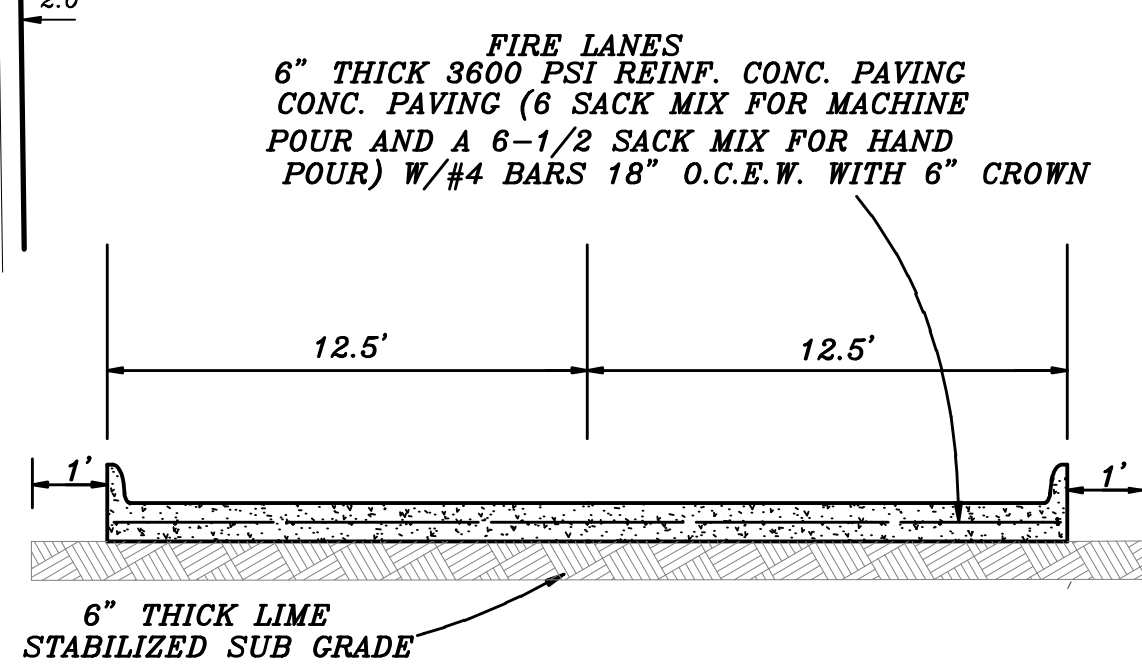
PROPOSED PAVING  
 REGENCY DRIVE  
 THE STANDARD ROCKWALL  
 CITY OF ROCKWALL,  
 ROCKWALL COUNTY, TEXAS

REVISION	W.L.D.
CHECKED	D.A.C.
DRAWN	
SCALE	1" = 20' H 1" = 4' V
DATE	FEB. 2018
PROJECT	17013
	53

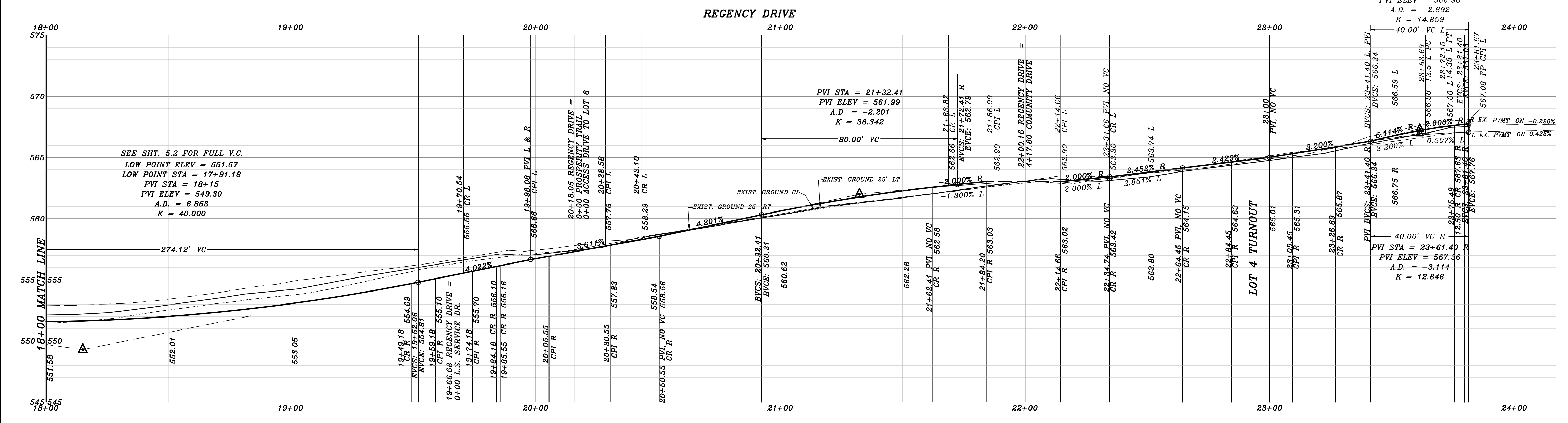


CURVE	DELTA	RADIUS	TANGENT	LENGTH	BEARING	DISTANCE
C1	71°58'04"	85.00'	61.72'	106.77'	S07°35'16"E	99.88'
C2	23°41'37"	42.50'	8.91'	17.58'	S49°55'10"E	17.45'

SEE SHT. 5.0 FOR PAVING DETAILS



TYPICAL FIRE LANE DETAIL



SEE SHT. 5.2 FOR FULL V.C.  
 LOW POINT ELEV = 551.57  
 LOW POINT STA = 17+91.18  
 PVI STA = 18+15  
 PVI ELEV = 549.30  
 A.D. = 6.853  
 K = 40.000

PVI STA = 23+61.40 L  
 PVI ELEV = 566.98  
 A.D. = -2.692  
 K = 14.859

PVI STA = 23+61.40 R  
 PVI ELEV = 567.36  
 A.D. = -3.114  
 K = 12.846