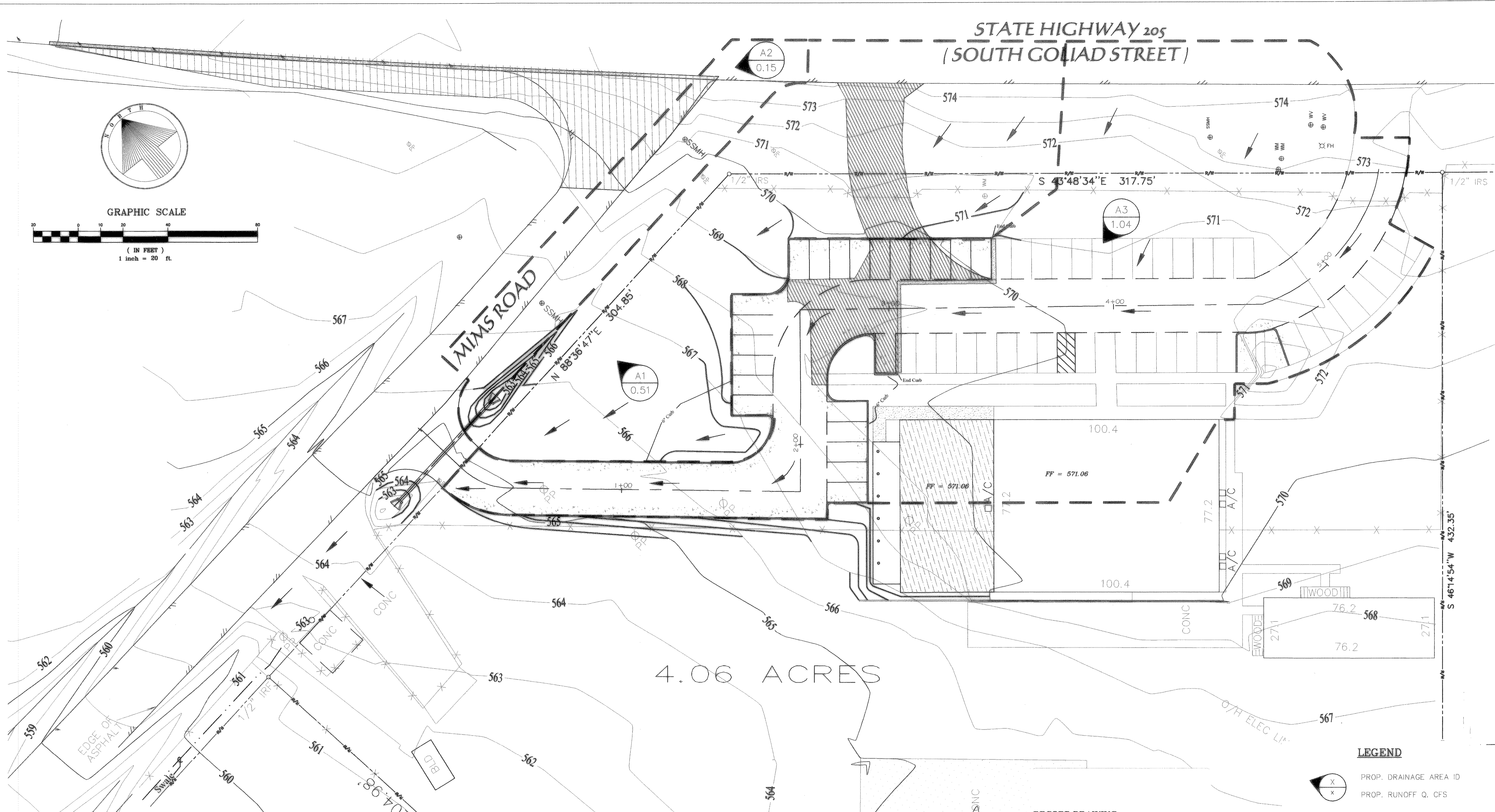
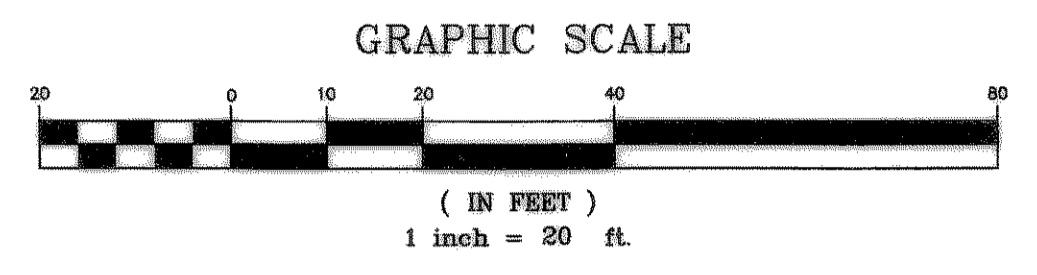
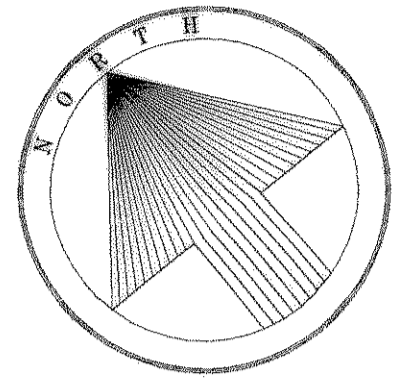


STATE HIGHWAY 205  
(SOUTH GOLIAD STREET)

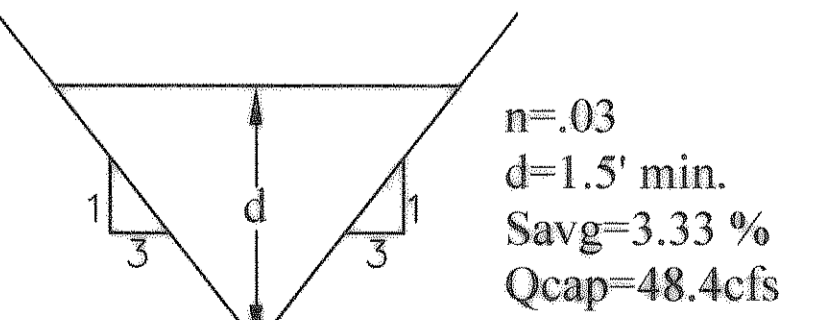


4.06 ACRES

PROP. DRAINAGE AREA CALCULATIONS

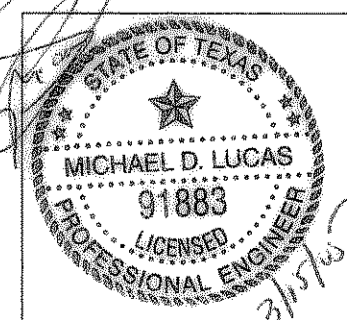
Area ID	Acres	C <sub>Dev.</sub>	INTENSITY	Q <sub>100 Dev.</sub>	INLET
A1	0.51	0.9	9.8	4.49	BAR DITCH
A2	0.15	0.9	9.8	1.32	BAR DITCH
A3	1.04	0.9	9.8	9.17	BAR DITCH

A1 = 21,748.08 SQ. FT.  
A2 = 6,423.13 SQ. FT.  
A3 = 45,234.38 SQ. FT.



BENCHMARK =  
TOP RIM OF SANITARY SEWER MANHOLE ON SOUTH SIDE OF  
MIMS ROAD, LOCATED 100 FEET WEST AND 20 FEET NORTH OF  
THE NORTHWEST CORNER OF LOT 1, BLOCK 1 TEXAS STAR  
ADDITION. ELEVATION=566.55, NAD83 29

TOP OF STANDARD USSS MON STAMPED "1 929 1848" AT THE  
NORTHWEST CORNER OF A CONCRETE GUARDRAIL BASE, 17 FT.  
SOUTHWEST OF THE CENTERLINE OF HIGHWAY AND 3 FT. SOUTHWEST  
OF THE NORTHWEST END OF GUARDRAIL BASE.  
ELEV. = 524.80 NAD83 29



revisions	date
REMOVED MIMS ROAD PAVEMENT IMPROVEMENTS	03/03/05

RECORD DRAWING:  
These plans, to the best of our knowledge and based on information supplied by the contractor, represent the general conditions that were constructed. Any changes or modifications shown which differ from the City-approved plans are based on information supplied by the contractor. As Lucas Consulting Services did not perform any construction inspection on this project, Lucas Consulting Services makes no certification or approval as to the quality or correctness of the construction of the facilities shown on these plans.

DATE: 8/26/05  
LUCAS CONSULTING SERVICES

- LEGEND
- PROP. DRAINAGE AREA ID
  - PROP. RUNOFF Q. CFS
  - FLOW DIRECTION
  - EXIST. CONTOURS
  - DRAINAGE DIVIDE

**Lucas Consulting Services**

1932 Gullwing Drive Rockwall, Texas 75087  
ph: 972-722-8314 fax: 972-722-8314  
email: lucasconsulting@charter.net

TEXAS STAR EXPRESS DRAINAGE AREA ROCKWALL, TEXAS					sheet no.
design	drawn	scale	date	notes	3 6
LOS	LOS	1"=20'	OCT 2004	*	
					job number
					#022-01-04