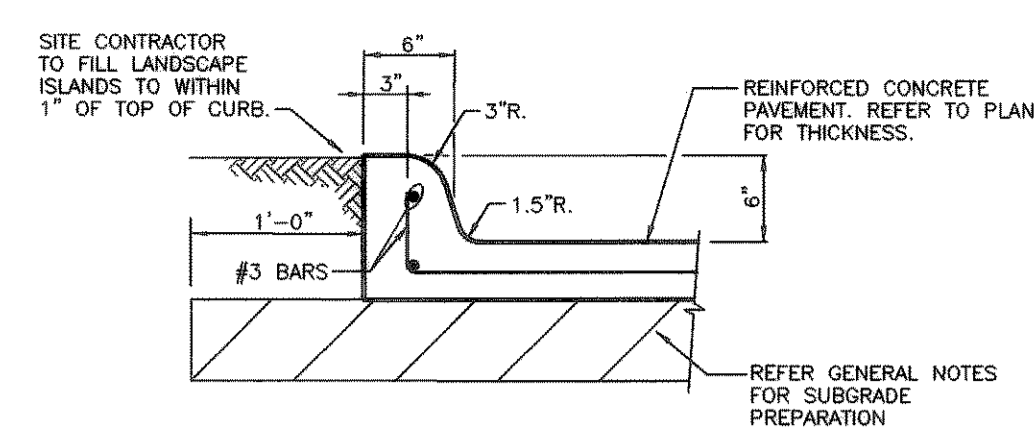
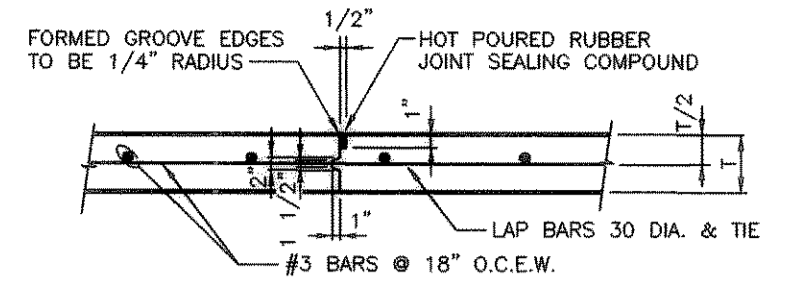


**PAVING GENERAL NOTES:**

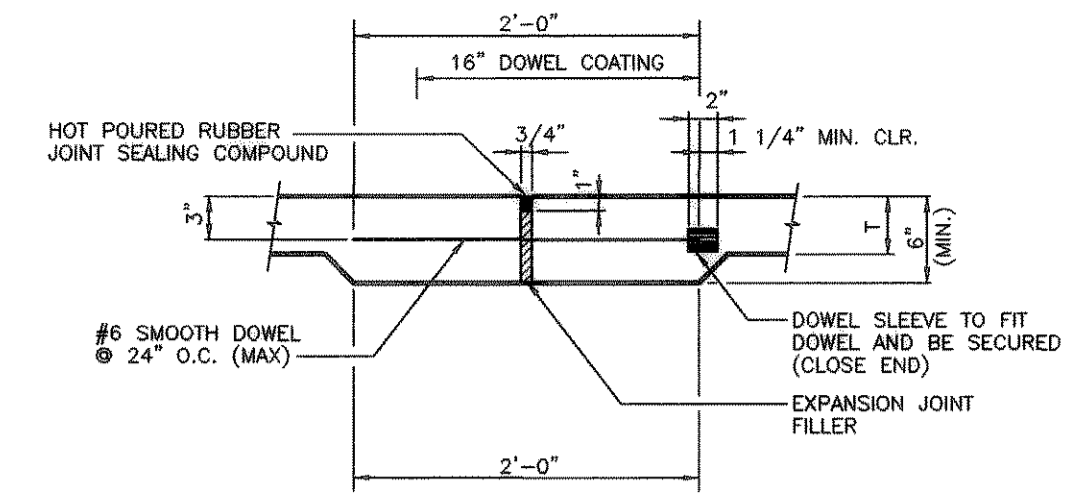
- ALL CONCRETE PAVING SHALL BE OF THE THICKNESS SHOWN ON THE PLAN AND BE 3,500 PSI CONCRETE AT 28 DAYS WITH A MIXTURE THAT IS MINIMUM OF FIVE (5) SACKS CEMENT PER CUBIC YARD AND HAVING A ONE INCH (1") TO FOUR INCH (4") SLUMP AND REINFORCED WITH #3 BARS @ 18" O.C.E.W. FOR SIX INCH (6") THICK PAVEMENT AND #3 BARS AT EIGHTEEN INCH (18") O.C.E.W. FOR SEVEN INCH (7") THICK PAVEMENT. REINFORCING SHALL BE SUPPORTED BY CHAIRS AND SPACED AT 16" S.F. MAXIMUM INTERVAL.
- SUBGRADE SHALL BE SCARIFIED TO A DEPTH OF SIX INCHES (6") AND RECOMPACTED TO 95% STANDARD PROCTOR DENSITY AT -1 TO +3 PERCENTAGE POINTS ABOVE OPTIMUM MOISTURE CONTENT AS DETERMINED BY ASTM D-698 "STANDARD PROCTOR".
- SEALANT MATERIAL TO BE QA55 ASPHALT OR A RUBBER BASED COMPOUND. SPECIFICATIONS TO BE SUBMITTED TO THE ENGINEER PRIOR TO INSTALLATION.
- BREAKOUTS FOR REMOVAL OF EXISTING PAVEMENT AND CURBS SHALL BE MADE BY SAW CUT WHEN ADJACENT TO PROPOSED PAVING AND/OR CURBS.
- PROPOSED CONCRETE CURBS SHALL MATCH ELEVATIONS OF EXISTING CURB.
- CONCRETE TO BE FLOAT FINISHED AND CURED FOR A MINIMUM OF 72 HOURS.
- FIRE LANES SHALL BE MARKED BY SIX INCH (6") WIDE LINES USING RED TRAFFIC PAINT, WITH WORDING "NO PARKING" AND "FIRE LANE" PAINTED ON THE LINES AT INTERVALS OF TWENTY-FIVE FEET (25'). THE LETTERING WILL BE FOUR INCHES (4") HIGH WITH A ONE INCH (1") WIDE STROKE PAINTED WITH WHITE TRAFFIC PAINT.
- ALL PARKING SPACES SHOWN ON PROPOSED CONSTRUCTION SHALL BE MARKED WITH 4 INCH (4") WIDE WHITE PAINTED PAVEMENT STRIPING. PAINT SHALL BE SHERWIN WILLIAMS SERIES B-29Y2 OR APPROVED ALTERNATE.
- ALL WORKMANSHIP AND MATERIAL SHALL BE IN ACCORDANCE WITH CITY OF ROCKWALL STANDARD SPECIFICATIONS AND/OR SPECIFICATIONS ESTABLISHED BY THIS PROJECT. THE MOST STRINGENT SHALL APPLY.
- CONTRACTOR SHALL SUBMIT A JOINT SPACING PLAN TO THE ENGINEER PRIOR TO PLACEMENT OF CONCRETE PAVEMENT. CONTROL JOINTS SHALL BE INSTALLED AT A MAXIMUM SPACING OF 15' O.C.E.W. FOR SIX INCH (6") THICK PAVEMENT AND 15.0' O.C.E.W. FOR SEVEN INCH (7") THICK PAVEMENT. EXPANSION JOINTS SHALL BE INSTALLED AT A MAXIMUM SPACING OF NINETY FEET (90'). CONCRETE SHALL BE PLACED IN STRIPS NOT TO EXCEED 30 FEET (30') IN WIDTH. LEVEL UP SAND COARSE WILL NOT BE ALLOWED.
- CONTRACTOR WILL PROVIDE A TWO (2) YEAR UNCONDITIONAL MAINTENANCE FREE WARRANTY ON PORTLAND CEMENT CONCRETE PAVEMENT.



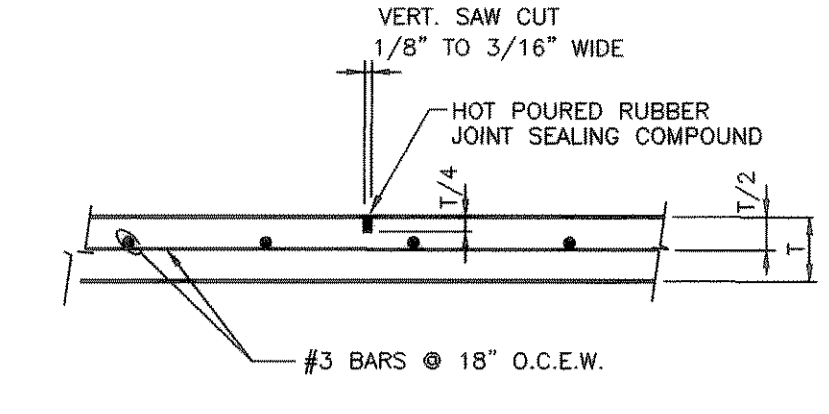
**0.1 INTEGRAL CURB DETAIL**  
N.T.S.



**0.2 CONSTRUCTION JOINT**  
N.T.S.



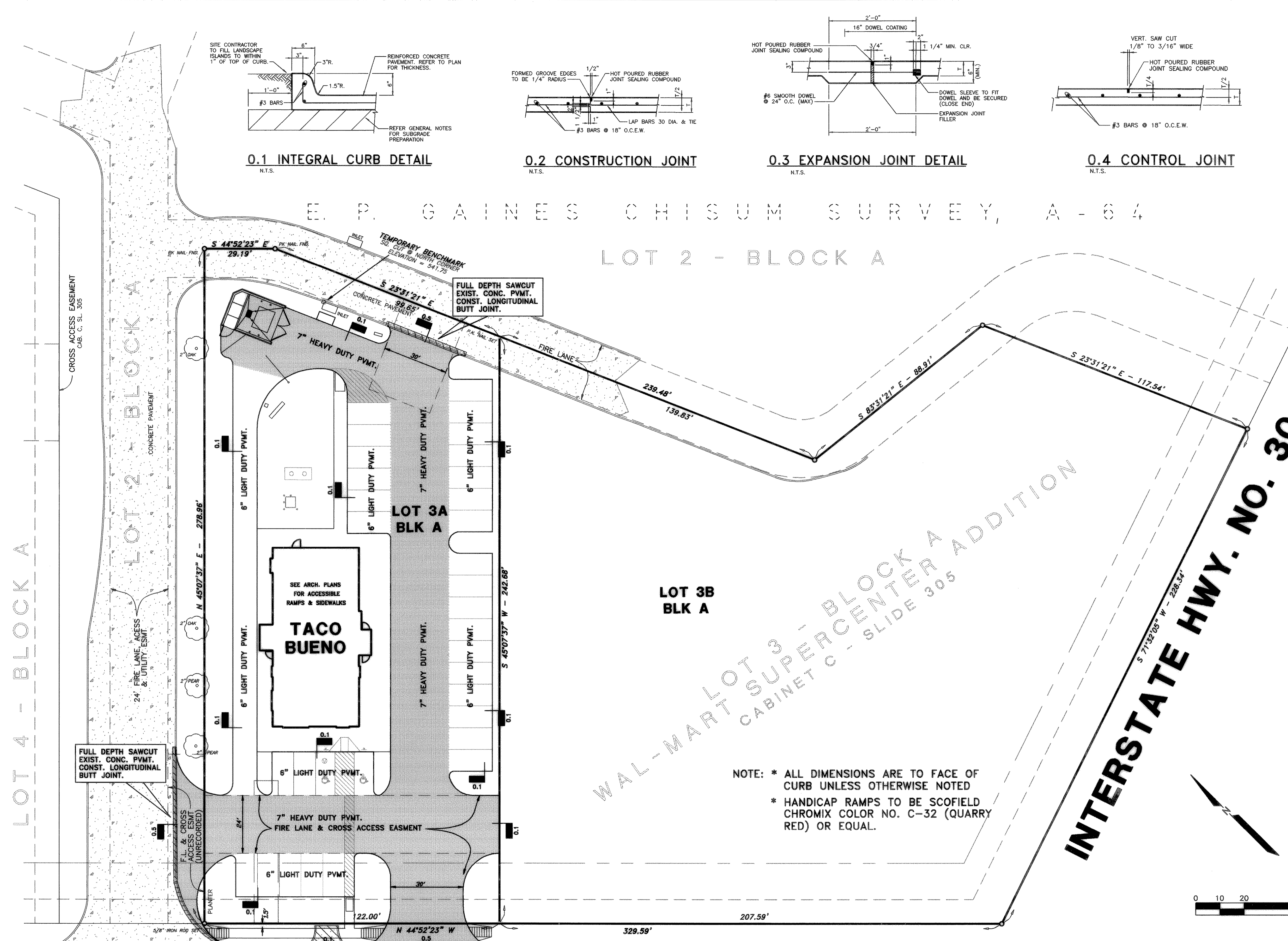
**0.3 EXPANSION JOINT DETAIL**  
N.T.S.



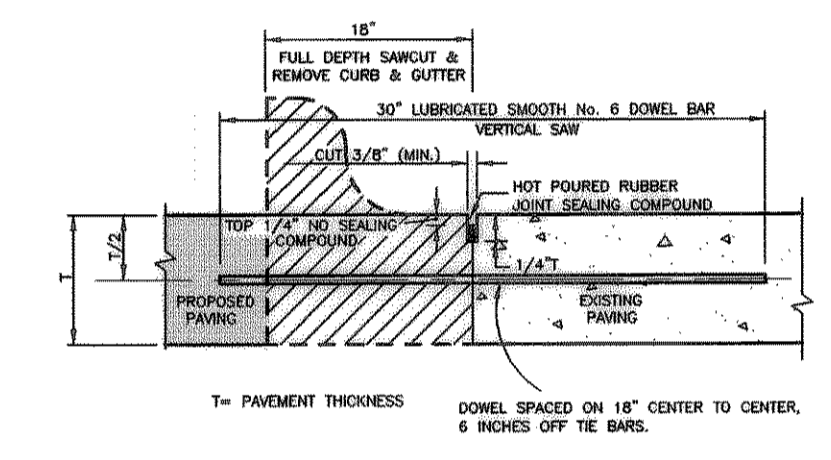
**0.4 CONTROL JOINT**  
N.T.S.

E. P. GAINES CHISUM SURVEY, A - 64

LOT 2 - BLOCK A

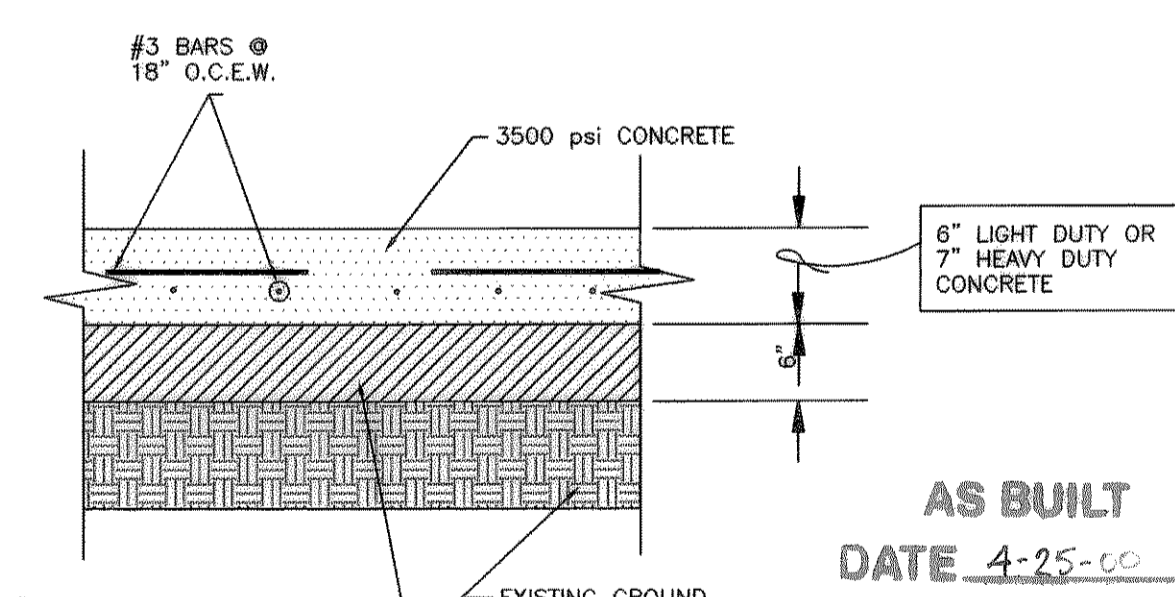


NOTE: \* ALL DIMENSIONS ARE TO FACE OF CURB UNLESS OTHERWISE NOTED  
\* HANDICAP RAMPS TO BE SCOFIELD CHROMIX COLOR NO. C-32 (QUARRY RED) OR EQUAL.



- NOTES:
- NO. 5 SMOOTH DOWEL BAR MAY BE USED IN 5 INCH THICK AND GREATER PAVEMENT.
  - LONGITUDINAL BUTT CONSTRUCTION MAY BE UTILIZED IN PLACE OF LONGITUDINAL HINGED (KEYWAY) JOINT AT CONTRACTOR'S OPTION.
  - DOWEL BARS SHALL BE DRILLED INTO PAVEMENT HORIZONTALLY BY USE OF A MECHANICAL RIG.
  - DRILLING BY HAND IS NOT ACCEPTABLE. PUSHING DOWEL BARS INTO GREEN CONCRETE IS NOT ACCEPTABLE.

**0.5 LONGITUDINAL BUTT JOINT**  
N.T.S.



**LIGHT/HEAVY DUTY CONCRETE PAVEMENT SECTION**  
N.T.S.

**PAVING LEGEND**

- 6" LIGHT DUTY CONC. PAVEMENT
- 7" HEAVY DUTY CONC. PAVEMENT
- SAWCUT & REMOVE EX. CONC.

**LEGEND**

- F.H. FIRE HYDRANT
- OX SET CHISELED "X" SET
- OF.F. CHISELED "X" FOUND
- OF.F. IRON ROD FOUND (SIZE AS NOTED)
- OF.F. IRON ROD SET (SIZE AS NOTED)
- OP. OVERHEAD UTILITY POLE W/ GUY
- UE. UNDERGROUND ELECTRIC OR TELEPHONE
- LP. LIGHT POLE
- SM. SANITARY SEWER MANHOLE
- CO. SAN. SWR. CLEAN OUT
- GV. GAS VALVE
- W.V. WATER VALVE
- TREE

THE SEAL APPEARING ON THIS DOCUMENT WAS AUTHORIZED BY LAWRENCE A. CATES, P.E. 41838 ON 04-25-00



REV.	DATE	REVISIONS
2	7/25/99	REV PER CITY COMMENTS
1	6/17/99	REVISE PER CITY COMMENTS

PAVING PLAN					
TACO BUENO					
INTERSTATE HIGHWAY #30 & WHITEHILLS DRIVE					
ROCKWALL, TEXAS					
LAWRENCE A. CATES & ASSOC., INC.		CONSULTING ENGINEERS			
14200 MIDWAY ROAD, SUITE 122		(872) 385-2272 DALLAS, TEXAS			
DESIGN	DRAWN	DATE	SCALE	NOTES	FILE NO.
LAC	RPM	4/1/99	1" = 20'	D.P.	98072 PAVING C-5