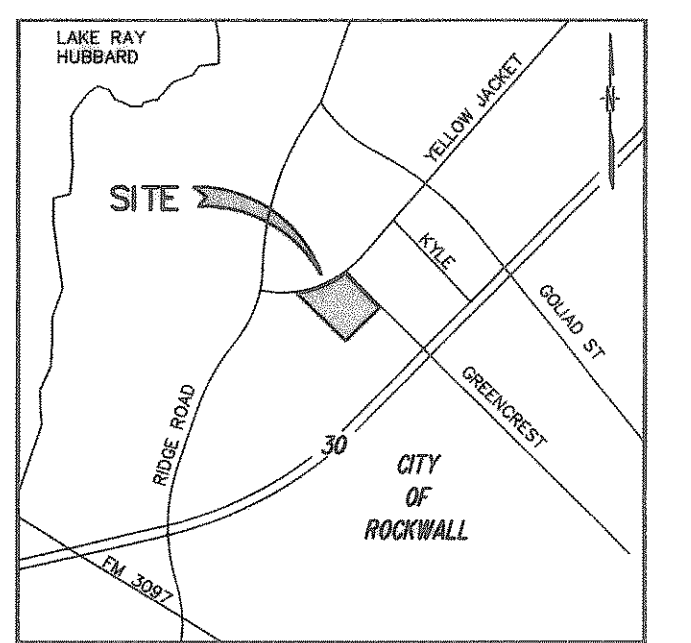
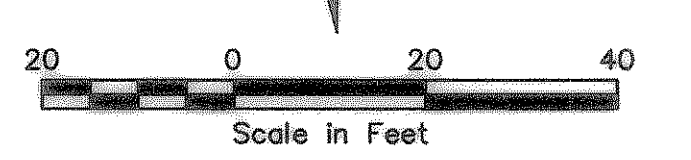
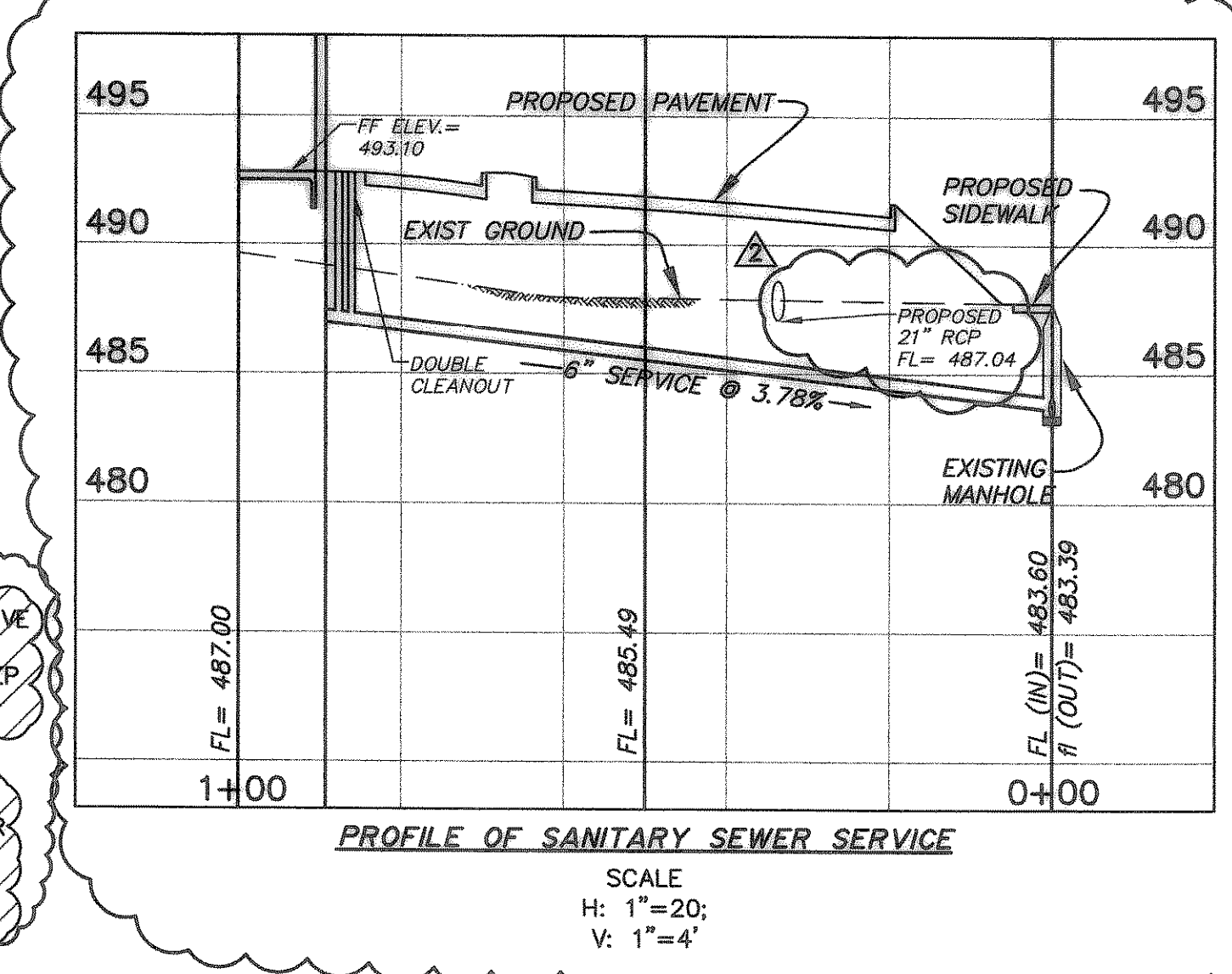
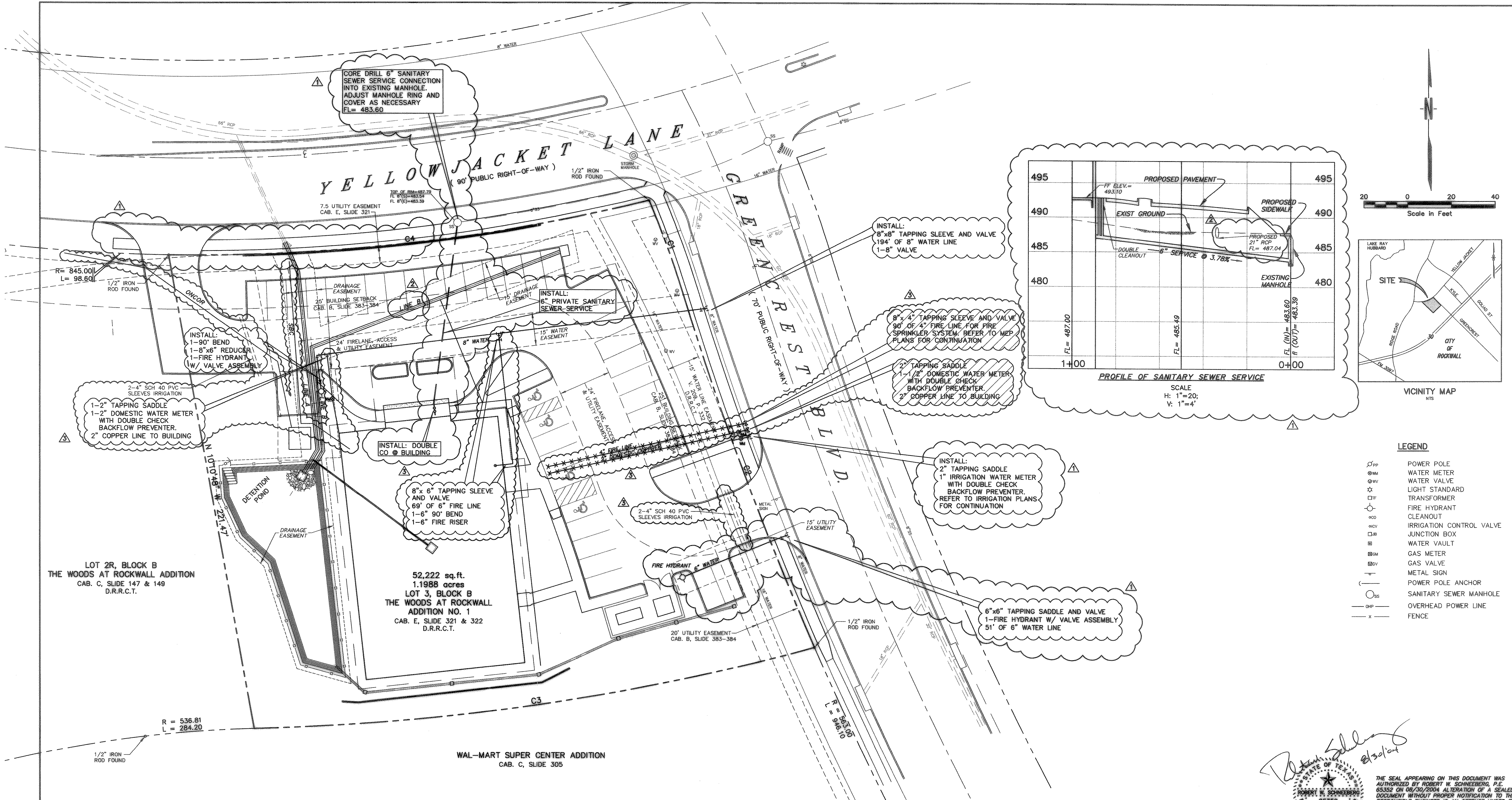


P:\4956-rockwall\1\as-builts\4956util.dwg Mod Sep 01 14:03:47 2004 Gonzalez & Schneeborg, Engineers & Surveyors, Inc.



LEGEND

- ⊙ PP POWER POLE
- ⊙ WM WATER METER
- ⊙ WV WATER VALVE
- ⊙ LV LIGHT STANDARD
- ⊙ TF TRANSFORMER
- ⊙ FH FIRE HYDRANT
- ⊙ CC CLEANOUT
- ⊙ ICV IRRIGATION CONTROL VALVE
- ⊙ JB JUNCTION BOX
- ⊙ WV WATER VAULT
- ⊙ GM GAS METER
- ⊙ GSV GAS VALVE
- ⊙ MS METAL SIGN
- ⊙ PA POWER POLE ANCHOR
- ⊙ SM SANITARY SEWER MANHOLE
- ⊙ OHP OVERHEAD POWER LINE
- ⊙ X FENCE

LOT 2R, BLOCK B
THE WOODS AT ROCKWALL ADDITION
CAB. C, SLIDE 147 & 149
D.R.R.C.T.

52,222 sq. ft.
1.1988 acres
LOT 3, BLOCK B
THE WOODS AT ROCKWALL
ADDITION NO. 1
CAB. E, SLIDE 321 & 322
D.R.R.C.T.

WAL-MART SUPER CENTER ADDITION
CAB. C, SLIDE 305

WATER GENERAL NOTES

1. All materials and construction shall conform to the City of Rockwall Standards and Specifications except as noted herein or approved by the City.
2. Water lines sized six through eight inches shall be constructed to have a minimum cover depth of 4 feet.
3. Water lines sized 6 inches through 8 inches shall be PVC AWWA C-900, minimum DR 14 (200 Pressure Class), blue in color, or City approved equal.
4. Water services with City approved meter boxes shall be of the size shown and installed at the location depicted at left.
5. All pipe and structures shall be accurately constructed to grades and alignment shown on approved construction drawings.
6. Refer to the Storm Sewer Plans for possible conflicts.
7. Contractor shall be responsible for maintaining trench safety requirements in accordance with City Standards, Texas State Law, and O.S.H.A. Standards.
8. Contractor shall protect all public utilities in the construction of this project. Existing utility data is provided for information only. Although this data is shown as accurately as possible, the Contractor is cautioned that the Owner and the Engineer neither assumes nor implies any responsibility for the accuracy of this data.
9. Contractor is required to maintain all erosion control devices present at the site. If said devices were moved during the course of the workday, the Contractor shall replace them at the end of same workday.

CURVE TABLE

| CURVE | DELTA | RADIUS | TANGENT LENGTH | CHORD | CHORD BEARING |
|-------|-----------|----------|----------------|---------|---------------|
| C1 | 05°34'51" | 463.52' | 22.89' | 45.13' | S 19°53'12" E |
| C2 | 06°22'58" | 1963.00' | 87.15' | 174.12' | S 20°17'15" E |
| C3 | 13°59'31" | 1063.19' | 130.47' | 259.63' | S 81°36'36" W |
| C4 | 15°02'16" | 845.00' | 111.53' | 221.78' | N 83°22'52" E |

RECORD DRAWING
THIS DRAWING HAS BEEN REVISED TO REFLECT CONSTRUCTION RECORDS MAINTAINED BY THE GENERAL CONTRACTOR: RIDGEMONT COMMERCIAL CONSTRUCTION
DATE OF REVISION: AUGUST 30, 2004

BENCHMARKS:
TOP OPERATING NUT OF FIRE HYDRANT AT INTERSECTION OF YELLOW JACKET LN. AND KYLE DR.
ELEV. = 529.26

| NO. | DATE | REVISION |
|-----|----------|----------------------------|
| 3 | 8-30-04 | Changes for record drawing |
| 2 | 12-08-03 | Changes per City comments |
| 1 | 12-01-03 | Various as noted |

Robert W. Schneeborg
8/30/04
THE SEAL APPEARING ON THIS DOCUMENT WAS AUTHORIZED BY ROBERT W. SCHNEEBORG, P.E. 65352 ON 08/30/2004 ALTERATION OF A SEALED DOCUMENT WITHOUT PROPER NOTIFICATION TO THE RESPONSIBLE ENGINEER IS AN OFFENSE UNDER THE TEXAS ENGINEERING PRACTICE ACT.

PROJ. NO.: 4956-03-07-15 DWG. NO.: 4956util.dwg
Gonzalez & Schneeborg 680 N. Central Expressway
engineers - surveyors Suite 250, Plano, Texas 75074
(972) 518-8855 Fax: (972) 518-9901

UTILITY PLAN

LOT 3R, BLOCK B, THE WOODS AT ROCKWALL ADDITION NO. 1

SURGENCY CENTER OF ROCKWALL
CITY OF ROCKWALL, TEXAS

| DESIGN | DRAWN | DATE | SCALE | NOTES | FILE | NO. |
|--------|-------|----------------|--------|-------|------|-----|
| GSES | GSES | SEPTEMBER 2003 | 1"=20' | | | |