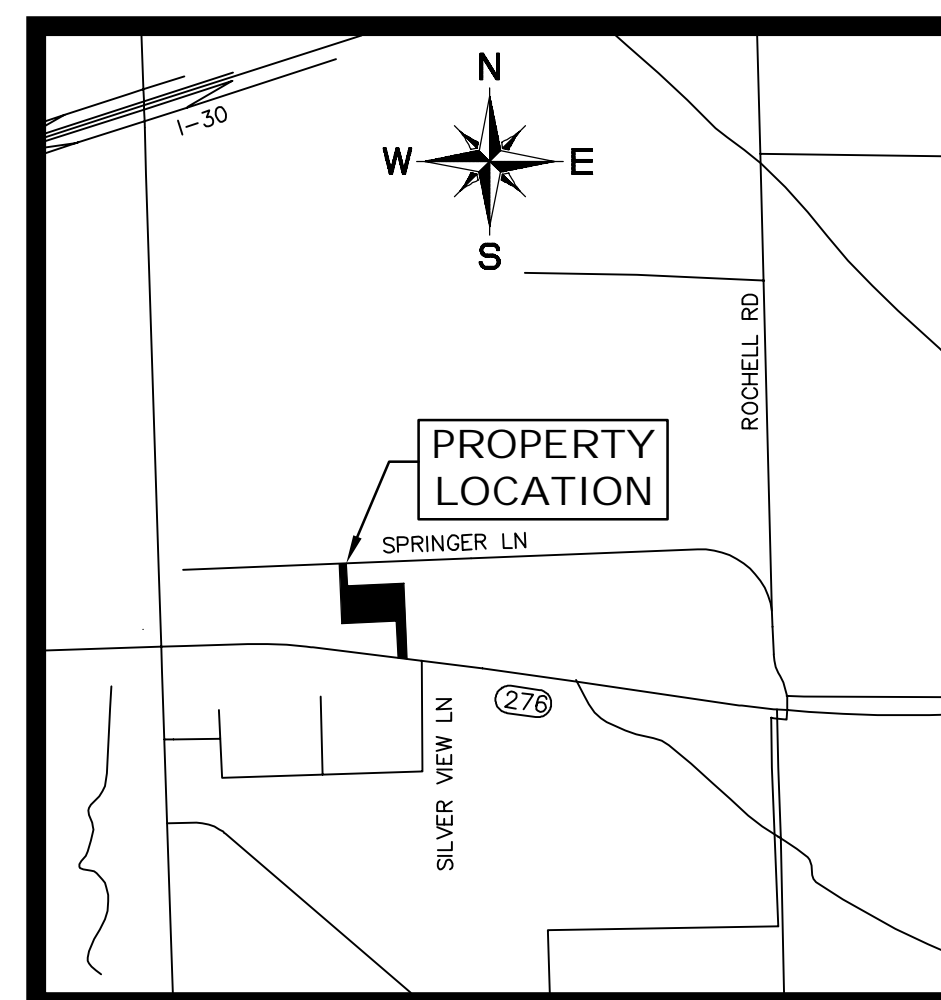


CONSTRUCTION PLANS FOR SUNBELT DEVELOPMENT IN THE CITY OF ROCKWALL ROCKWALL COUNTY, TEXAS

PLANS SUBMITTAL/REVIEW LOG

1ST CITY SUBMITTAL	11/13/2014
2ND CITY SUBMITTAL	12/08/2014
3RD CITY SUBMITTAL	12/17/2014
△ REVISION	02/24/2015
RECORD DRAWINGS	07/16/2015



VICINITY MAP
N.T.S.

INDEX OF SHEETS

SHEET NO.	DESCRIPTION
C-00	COVER SHEET
-	REPLAT (2 SHEETS)
C-01	SITE PLAN
C-02	GENERAL NOTES
C-03	PAVING & DIMENSION CONTROL AND UTILITY PLAN
C-04	GRADING PLAN
C-05	EROSION CONTROL PLAN
C-06	EROSION CONTROL DETAILS

DEVELOPER:

TKC LAND DEVELOPMENT II, LLC
5935 CARNEGIE BOULEVARD SUITE 200
CHARLOTTE, NC 28209
PH. (704) 319-8155
CONTACT: BETH GODFREY

ARCHITECT:

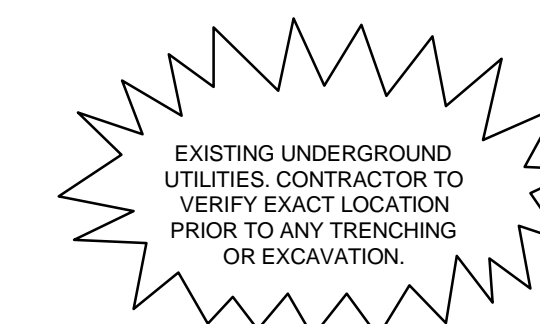
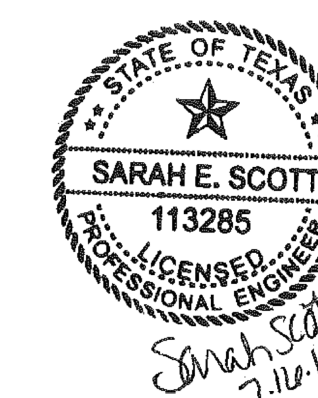
SEEBERGER ARCHITECTURE
2555 CENTRAL PKWY
HOUSTON, TX 77092
PH. (832) 831-3411
CONTACT: JORGE ROMERO

ENGINEER

Kimley»Horn

TEXAS REGISTERED ENGINEERING FIRM F-928
12750 MERIT DRIVE
SUITE 1000
DALLAS, TEXAS 75251
PH. (972) 770-1300
FAX (972)-239-3820
EMAIL: SARAH.SCOTT@KIMLEY-HORN.COM
CONTACT: SARAH E. SCOTT, P.E.

"RECORD DRAWING"
THIS DRAWING HAS BEEN REVISED TO SHOW THOSE CHANGES DURING THE CONSTRUCTION PROCESS REPORTED BY THE CONTRACTOR TO KIMLEY-HORN AND ASSOCIATES, INC. AND CONSIDERED TO BE SIGNIFICANT. THIS DRAWING IS NOT GUARANTEED TO BE "AS BUILT" BUT IS BASED ON THE INFORMATION MADE AVAILABLE.
DATE: 7.16.15 BY: Sarah Scott



JULY 2015

IMAGES: BENTLEY, ELIZABETH 7/16/2015 12:22 PM
 PLOTTED BY: K:\DAL_CIVIL\4747460\SUNBELT_ROCKWALL\CADD\303\PLANS\303\PLANS\303\COVER.DWG
 DWG NAME: K:\DAL_CIVIL\4747460\SUNBELT_ROCKWALL\CADD\303\PLANS\303\PLANS\303\COVER.DWG
 THIS DOCUMENT, TOGETHER WITH THE CONCEPTS AND DESIGNS PRESENTED HEREIN, IS AN INSTRUMENT OF SERVICE, IS INTENDED ONLY FOR THE SPECIFIC PURPOSE AND CLIENT FOR WHICH IT WAS PREPARED, REUSE OF AND IMPROPER RELIANCE ON THIS DOCUMENT WITHOUT WRITTEN AUTHORIZATION AND ADAPTATION BY KIMLEY-HORN AND ASSOCIATES, INC. SHALL BE WITHOUT LIABILITY TO KIMLEY-HORN AND ASSOCIATES, INC.