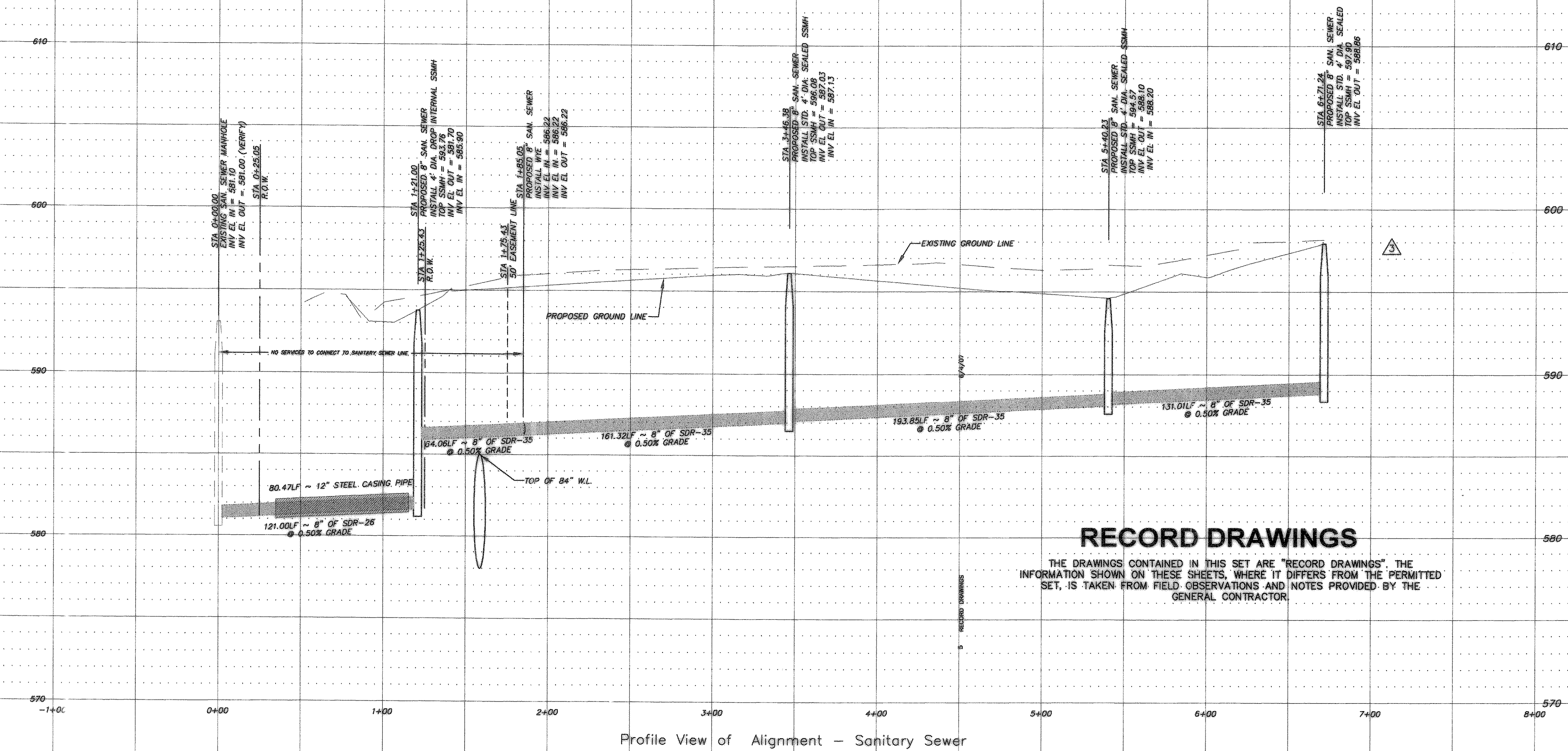


Profile View of West Culvert

Profile View of South Culvert

Profile View of Alignment - Storm Sewer

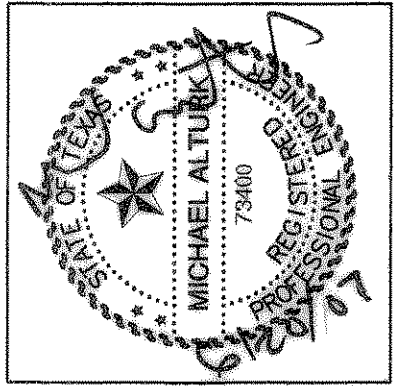


PROFILE SCALES:  
 1" = 40' HORIZ.  
 1" = 4' VERT.

**RECORD DRAWINGS**

THE DRAWINGS CONTAINED IN THIS SET ARE "RECORD DRAWINGS". THE INFORMATION SHOWN ON THESE SHEETS, WHERE IT DIFFERS FROM THE PERMITTED SET, IS TAKEN FROM FIELD OBSERVATIONS AND NOTES PROVIDED BY THE GENERAL CONTRACTOR.

NO.	DESCRIPTION	DATE	SCALE
1	ISSUE FOR PERMIT	5/20/06	1" = 40'
2	ISSUE FOR PERMIT	6/07/06	1" = 40'
3	REVISE SANITARY SEWER PER PRIVATE 84" WATER LINE	12/14/06	1" = 40'
4	REVISE STORM SEWER AND CURB INLET	4/9/07	1" = 40'
5	RECORD DRAWINGS	5/30/06	1" = 40'



SUBWAY / GATEWAY / HEALTH FOOD STORE  
 STATE HIGHWAY 276 & F.M. 549  
 ROCKWALL, ROCKWALL COUNTY, TEXAS

**SANITARY AND STORM SEWER PROFILES**

1120 S. FREEWAY SUITE 118  
 FT WORTH, TX 76104  
 PHONE (817) 271-9086  
 FAX (817) 796-1042

