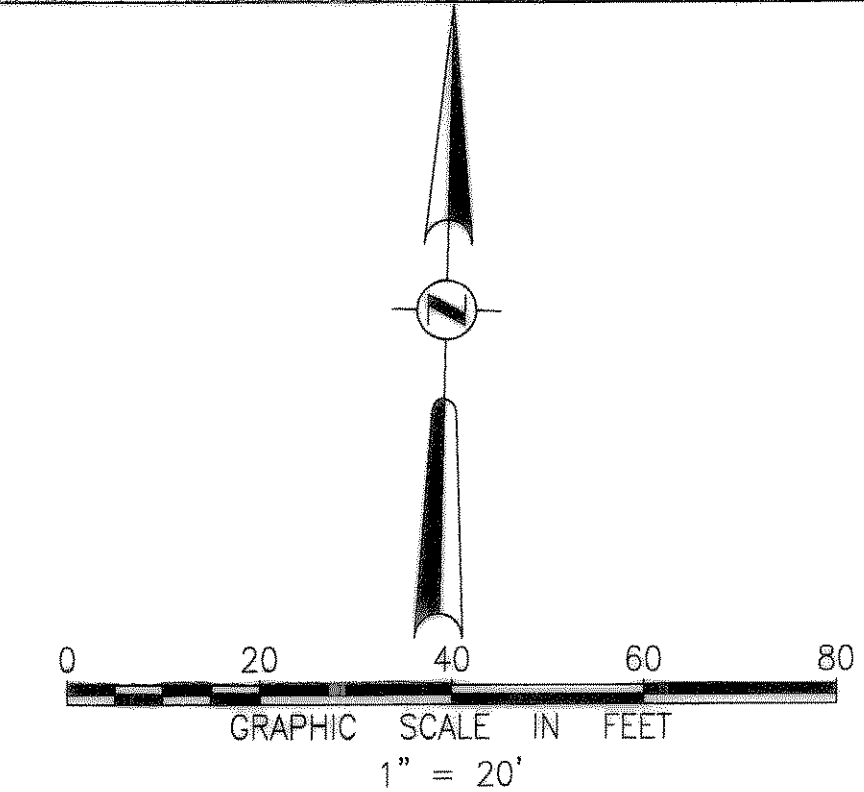
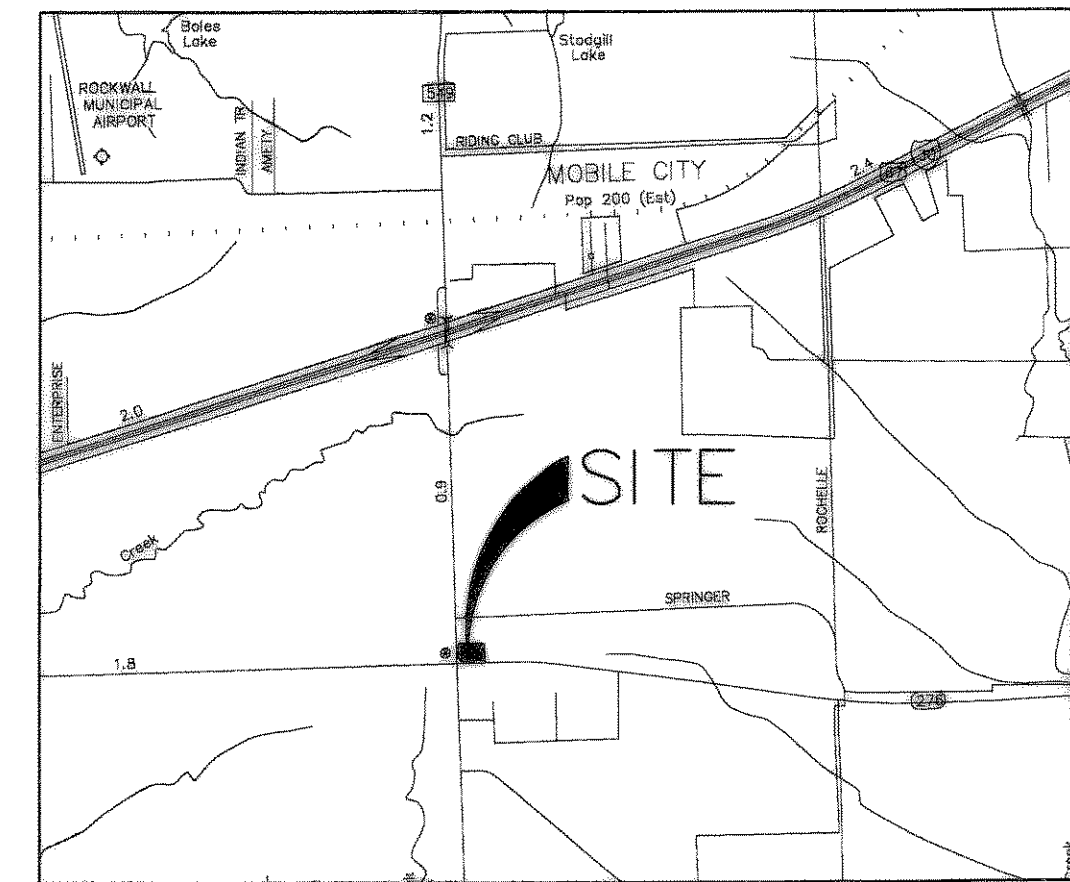


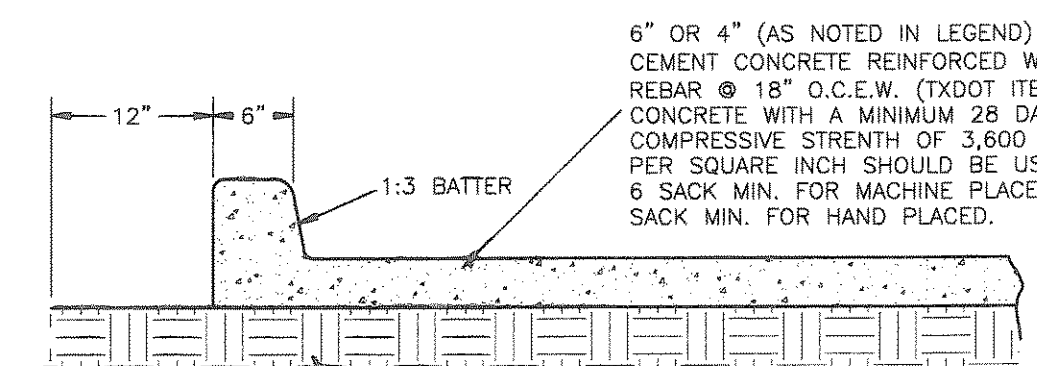
# RECORD DRAWINGS

THE DRAWINGS CONTAINED IN THIS SET ARE "RECORD DRAWINGS". THE INFORMATION SHOWN ON THESE SHEETS, WHERE IT DIFFERS FROM THE PERMITTED SET, IS TAKEN FROM FIELD OBSERVATIONS AND NOTES PROVIDED BY THE GENERAL CONTRACTOR.



### LEGEND

- PROPERTY LINE
- ADJOINED PROPERTY
- BUILDING SETBACK LINE
- EDGE OF DRIVING SURFACE
- PROPOSED CURB AND GUTTER
- 8" CONCRETE PAVING, HEAVY DUTY
- 6" CONCRETE PAVING, REGULAR DUTY
- 4" CONCRETE SIDEWALK, REGULAR DUTY

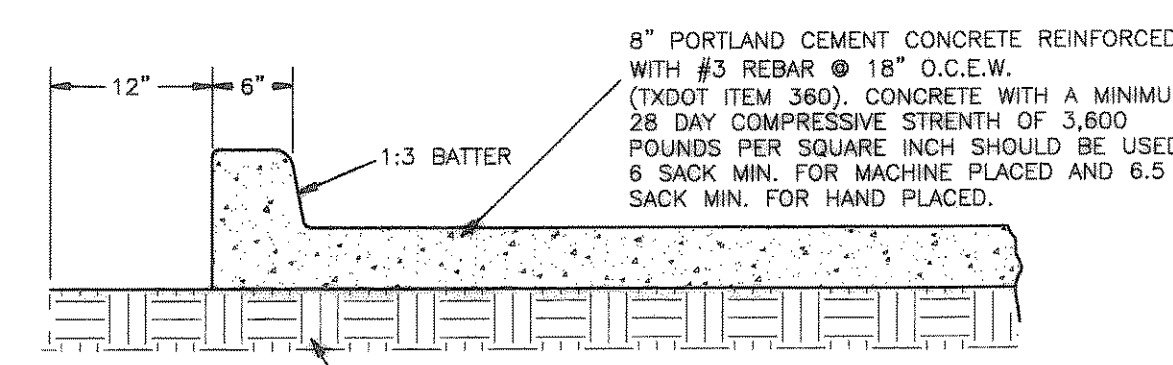


6" OR 4" (AS NOTED IN LEGEND) PORTLAND CEMENT CONCRETE REINFORCED WITH #3 REBAR @ 18" O.C.E.W. (TXDOT ITEM 360). CONCRETE WITH A MINIMUM 28 DAY COMPRESSIVE STRENGTH OF 3,600 POUNDS PER SQUARE INCH SHOULD BE USED. 6 SACK MIN. FOR MACHINE PLACED AND 6.5 SACK MIN. FOR HAND PLACED.

NOTE: REFER TO GEOTECHNICAL REPORT FOR EXACT PAVEMENT REQUIREMENTS.

### PAVEMENT SECTION - REGULAR DUTY

NTS



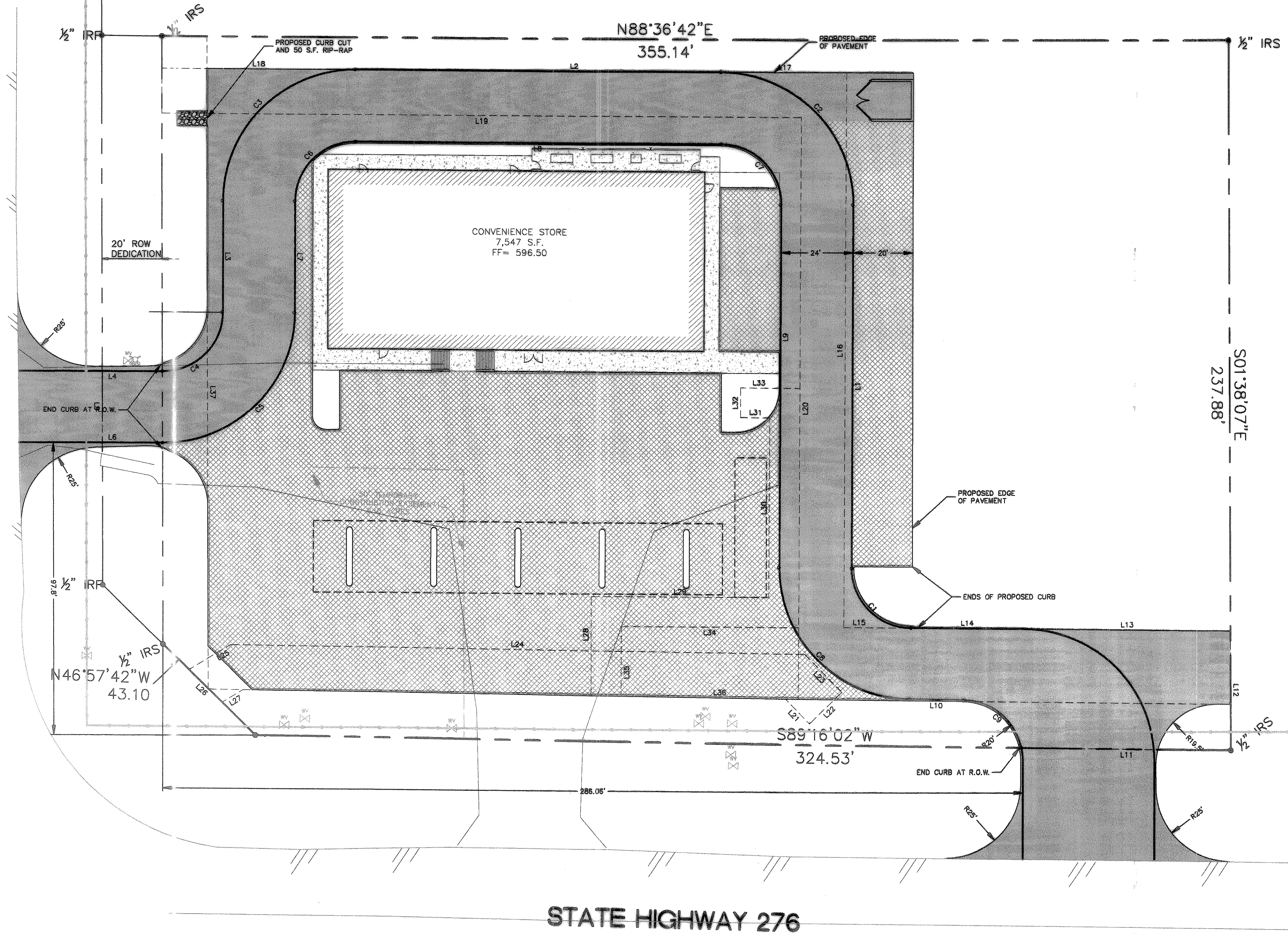
8" PORTLAND CEMENT CONCRETE REINFORCED WITH #3 REBAR @ 18" O.C.E.W. (TXDOT ITEM 360). CONCRETE WITH A MINIMUM 28 DAY COMPRESSIVE STRENGTH OF 3,600 POUNDS PER SQUARE INCH SHOULD BE USED. 6 SACK MIN. FOR MACHINE PLACED AND 6.5 SACK MIN. FOR HAND PLACED.

NOTE: REFER TO GEOTECHNICAL REPORT FOR EXACT PAVEMENT REQUIREMENTS.

### PAVEMENT SECTION - HEAVY DUTY

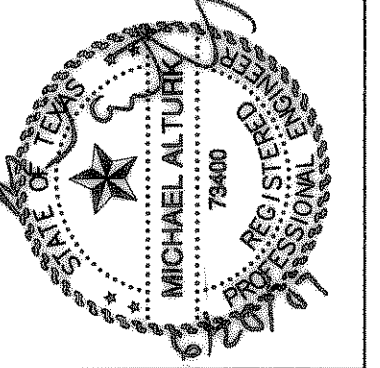
NTS

FARM TO MARKET ROAD 549



THE LOCATION OF EXISTING UNDERGROUND UTILITIES ARE SHOWN IN AN APPROXIMATE WAY ONLY. THE CONTRACTOR TO DETERMINE THE EXACT LOCATION OF ALL EXISTING UTILITIES BEFORE COMMENCING WORK. CONTRACTOR WILL BE FULLY RESPONSIBLE FOR ANY AND ALL DAMAGES WHICH MIGHT OCCUR BY FAILURE TO EXACTLY LOCATE AND PRESERVE ANY AND ALL UNDERGROUND UTILITIES.

NO.	DESCRIPTION	BY	DATE	SCALE
1	ISSUE FOR PERMIT		5/30/08	1" = 20'
2	ISSUE FOR PERMIT		5/07/08	1" = 20'
3	REVISE SANITARY SEWER PER PRIVATE 6" WATER LINE		12/14/06	1" = 20'
4	REVISE STORM SEWER AND CURB INLET		5/4/07	1" = 20'
5	RECORD DRAWING		5/29/08	1" = 20'



SUBWAY / GATEWAY / HEALTH FOOD STORE  
STATE HIGHWAY 276 & F.M. 549  
ROCKWALL, ROCKWALL COUNTY, TEXAS

PAVING PLAN

1120 S. FREEWAY SUITE 118  
FT WORTH, TX 76104  
PHONE (817) 271-9066  
FAX (817) 796-1042



SHEET  
C-31