

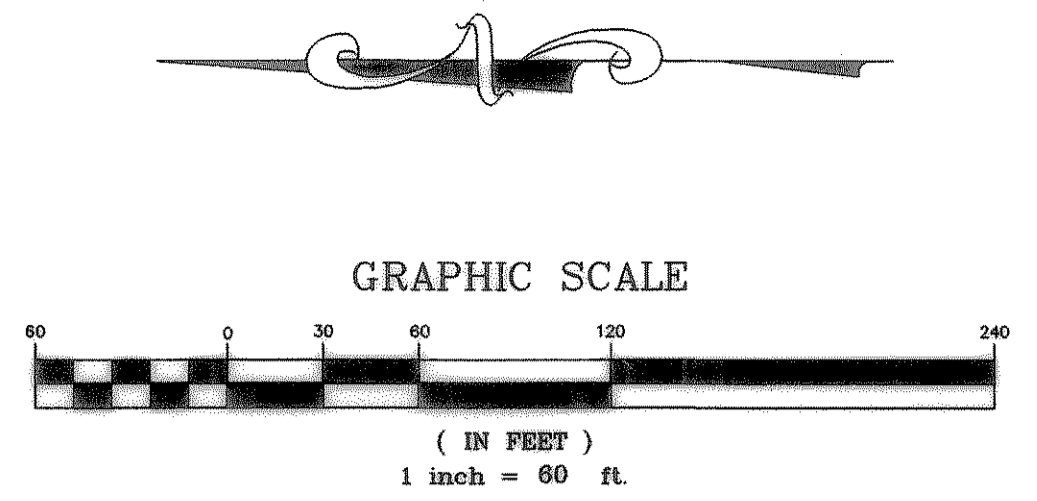
DOUPHRATE & ASSOCIATES, INC.
 ENGINEERING - PROJECT MANAGEMENT - SURVEYING
 2235 RIDGE RD., # 200 ROCKWALL, TEXAS 75087
 PHONE: (972)771-9004 FAX: (972)771-9005

TREE PRESERVATION PLAN
 STONEY HOLLOW ADDITION
 CITY OF ROCKWALL
 ROCKWALL COUNTY, TEXAS

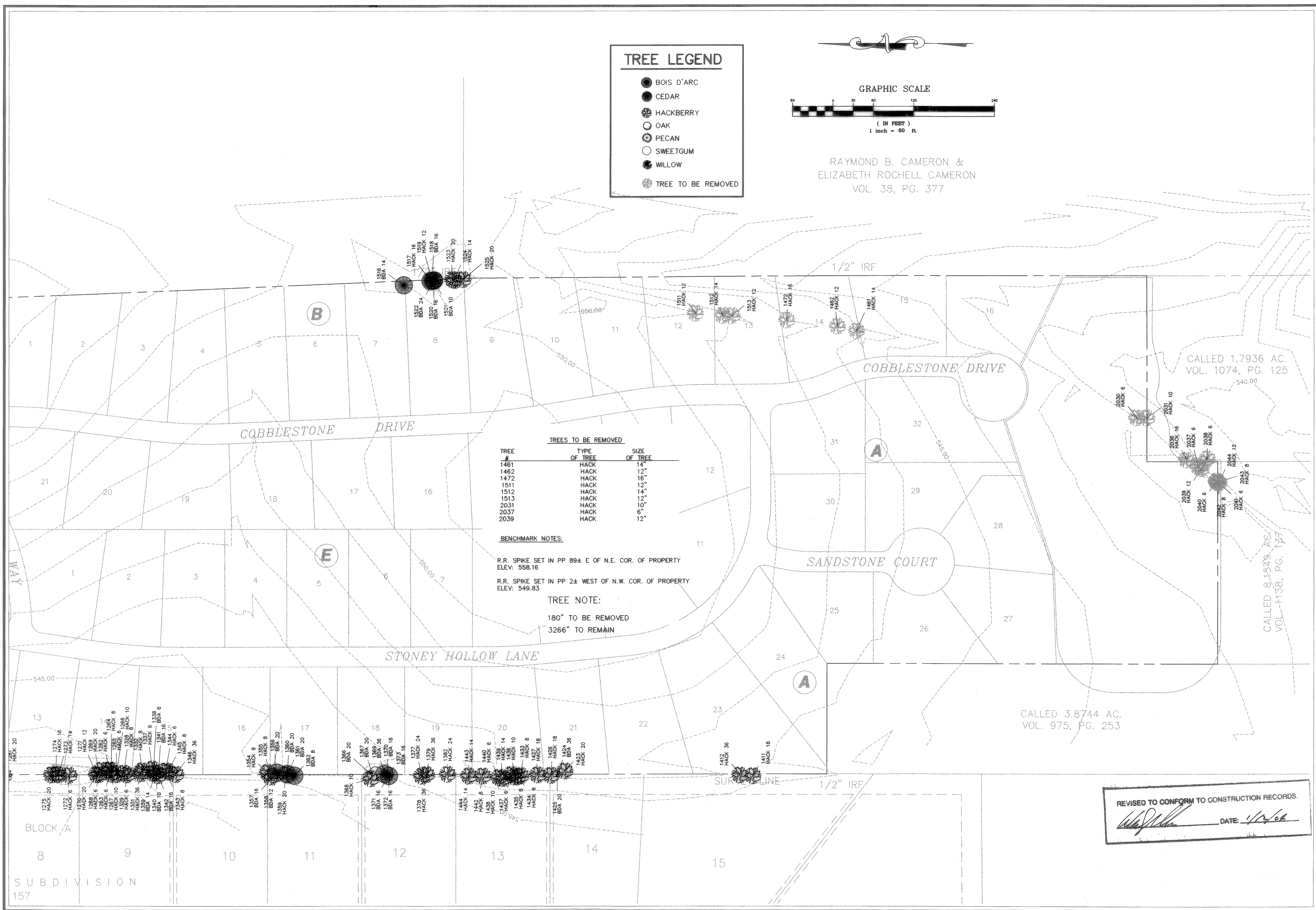
REVISION	W.L.D.
CHECKED	K.E.B.
DRAWN	1/02
DATE	9907TREE-1
PROJECT	8B of 48

TREE LEGEND

- BOIS D'ARC
- CEDAR
- HACKBERRY
- OAK
- PECAN
- SWEETGUM
- WILLOW
- TREE TO BE REMOVED



RAYMOND B. CAMERON &
 ELIZABETH ROCHELL CAMERON
 VOL. 38, PG. 377



TRES TO BE REMOVED

TREE #	TYPE OF TREE	SIZE OF TREE
1461	HACK	14"
1462	HACK	12"
1472	HACK	16"
1511	HACK	12"
1512	HACK	14"
1513	HACK	12"
2031	HACK	10"
2037	HACK	6"
2039	HACK	12"

BENCHMARK NOTES:
 R.R. SPIKE SET IN PP 89± E OF N.E. COR. OF PROPERTY
 ELEV: 558.16
 R.R. SPIKE SET IN PP 2± WEST OF N.W. COR. OF PROPERTY
 ELEV: 549.83.

TREE NOTE:
 180" TO BE REMOVED
 3266" TO REMAIN

REVISED TO CONFORM TO CONSTRUCTION RECORDS.
 DATE: 1/12/02