

CAUTION!!!
UNDERGROUND UTILITIES

EXISTING UTILITIES AND UNDERGROUND FACILITIES INDICATED ON THESE PLANS HAVE BEEN LOCATED FROM REFERENCE INFORMATION SUPPLIED BY VARIOUS OWNERS OF THE FACILITIES. THE ENGINEER DOES NOT ACCEPT THE RESPONSIBILITY FOR THE UTILITY LOCATIONS SHOWN. IT SHALL BE THE RESPONSIBILITY OF THE CONTRACTOR TO VERIFY BOTH HORIZONTALLY AND VERTICALLY THE LOCATION OF ALL EXISTING UTILITIES AND UNDERGROUND FACILITIES PRIOR TO CONSTRUCTION. TO TAKE NECESSARY PRECAUTIONS IN ORDER TO PROTECT ALL FACILITIES ENCOUNTERED, AND TO NOTIFY THE ENGINEER PROMPTLY OF ALL CONFLICTS OF THE WORK WITH EXISTING FACILITIES. THE CONTRACTOR SHALL PRESERVE AND PROTECT ALL EXISTING FACILITIES FROM DAMAGE DURING CONSTRUCTION. ANY DAMAGE BY THE CONTRACTOR TO EXISTING UTILITIES SHALL BE REPAIRED BY THE CONTRACTOR AT HIS EXPENSE.

STA = 33+06.28 F.M.
 INSTALL:
 1-12" 45° BEND

STA = 33+90.77 F.M.
 INSTALL:
 1-12" 45° BEND

STA = 34+10.85 F.M.
 CONNECT TO 5' DIA MH

BENCHMARK NOTES:

R.R. SPIKE SET IN PP 89± E OF N.E. COR. OF PROPERTY
 ELEV: 558.16
 R.R. SPIKE SET IN PP 2± WEST OF N.W. COR. OF PROPERTY
 ELEV: 549.83

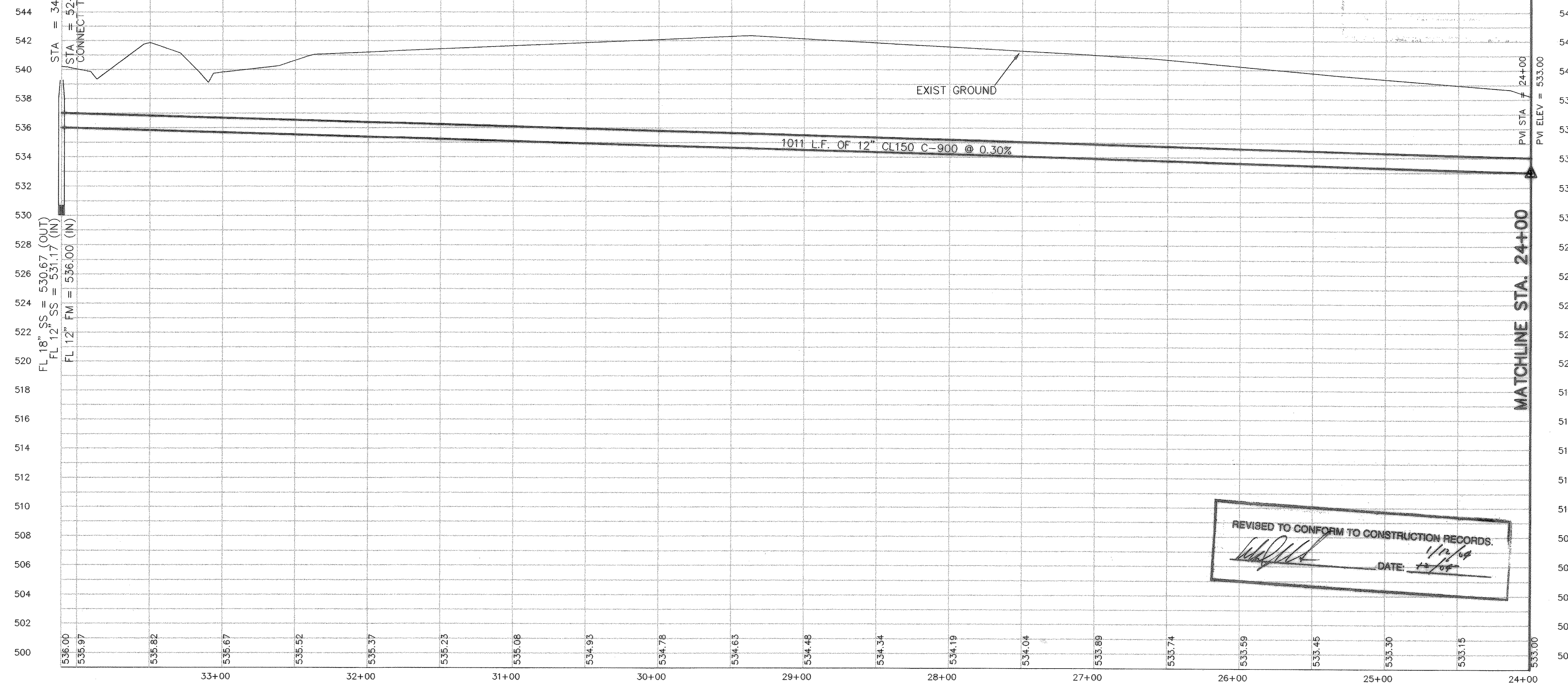
F.M. HIGHWAY NO. 552

12" SAN. SEWER

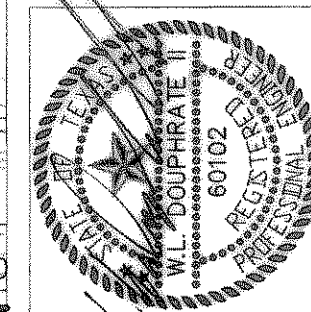
STATE HIGHWAY NO. 205

STA = 34+10.85 F.M.
 STA = 52+72.00 SH 205 SS
 CONNECT TO 5' DIA MH

FL 18" SS = 530.67 (OUT)
 FL 12" SS = 531.17 (IN)
 FL 12" FM = 536.00 (IN)



REVISED TO CONFORM TO CONSTRUCTION RECORDS.
 DATE: 1/22/04



THE SEAL APPEARING ON THIS DOCUMENT WAS AUTHORIZED BY THE BOARD OF ENGINEERING EXAMINERS OF THE STATE OF TEXAS BY ORDER OF THE BOARD OF ENGINEERING EXAMINERS, TEXAS, FEBRUARY 12, 2004.

DOUPHRADE & ASSOCIATES, INC.
 ENGINEERING - PROJECT MANAGEMENT - SURVEYING
 2235 RIDGE RD., # 200 ROCKWALL, TEXAS 75087
 PHONE: (972)771-9004 FAX: (972)771-9005

PLAN AND PROFILE
STA. 24+00 - 33+06.28 12" FORCE MAIN
STONE HOLLOW ADDITION
 CITY OF ROCKWALL, ROCKWALL COUNTY, TEXAS

REV. 9-23-02
 EXT. FORCE MAIN
 TO MET CITY
 CHANGES.

REVISION	
W.L.D.	CHECKED
K.E.B.	DRAWN
2/02	DATE
9907/FM3	PROJECT