

FEB. 15. 2002 2:16PM FLYGT PUMP DALLAS 972 418 2400 NO. 381 P. 5/5

Style "FLED-0" access hatch, as manufactured for ITT Flygt Corp., Trumbull, Ct. 203-380-4876.

Material shall be 6061-T6 aluminum for bars, angles, and extrusions. 1/4" diamond plate shall be 5086 aluminum.

Design of each access hatch shall conform to OSHA standard 1910.23.

Unit designed light duty, for a minimum live load of 300 lbs./sq.ft.

Each door shall be supplied with a heavy duty, stainless steel pneu-spring, for ease of operation when opening cover. Cover shall be counterbalanced, so one person can easily open the hatch door. Spring design shall accommodate ease of maintenance.

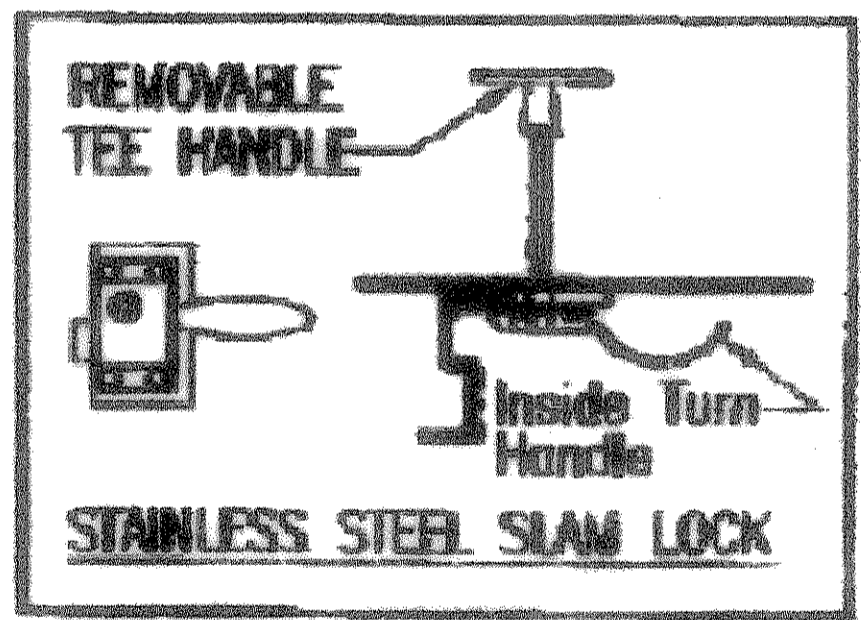
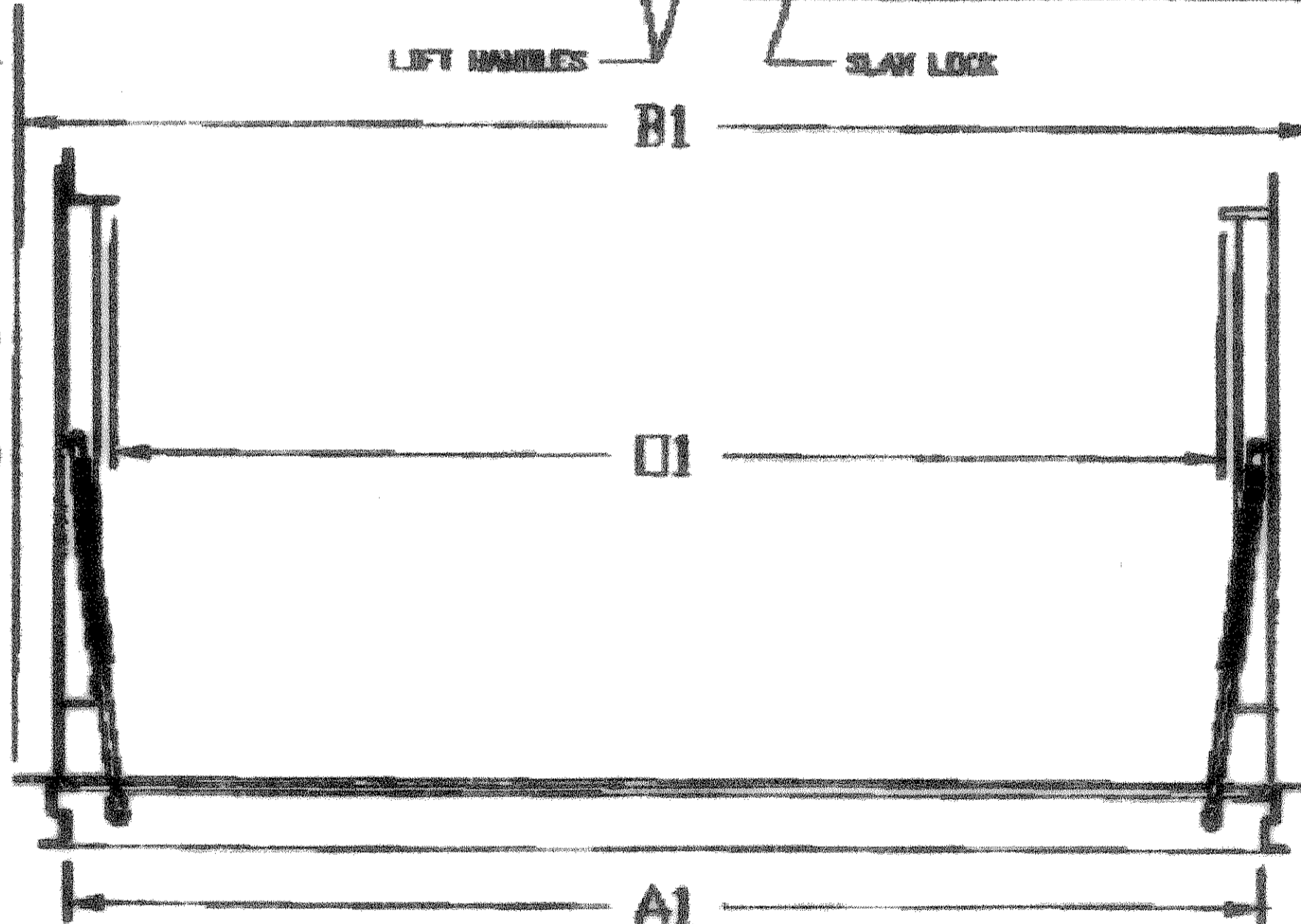
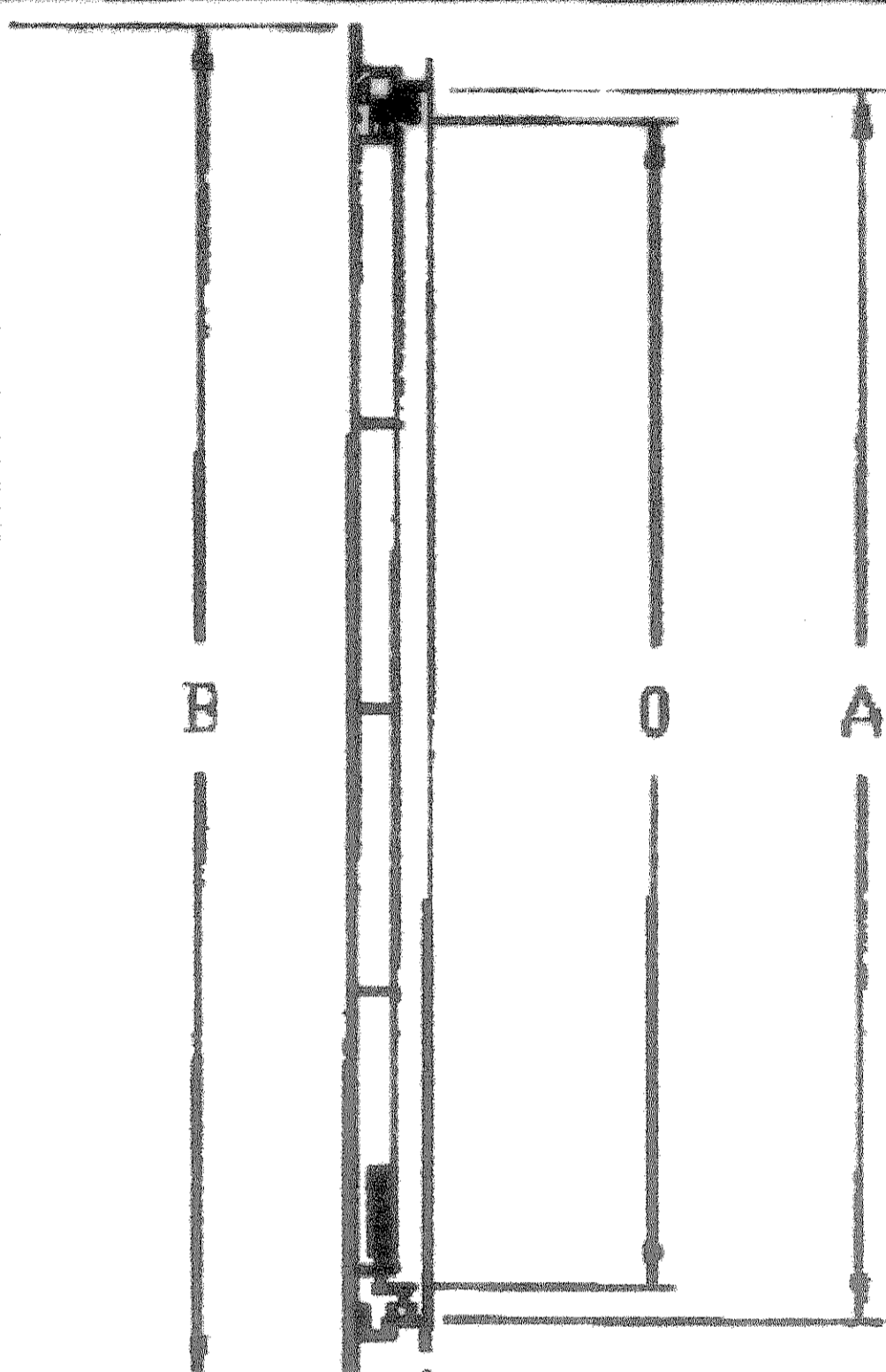
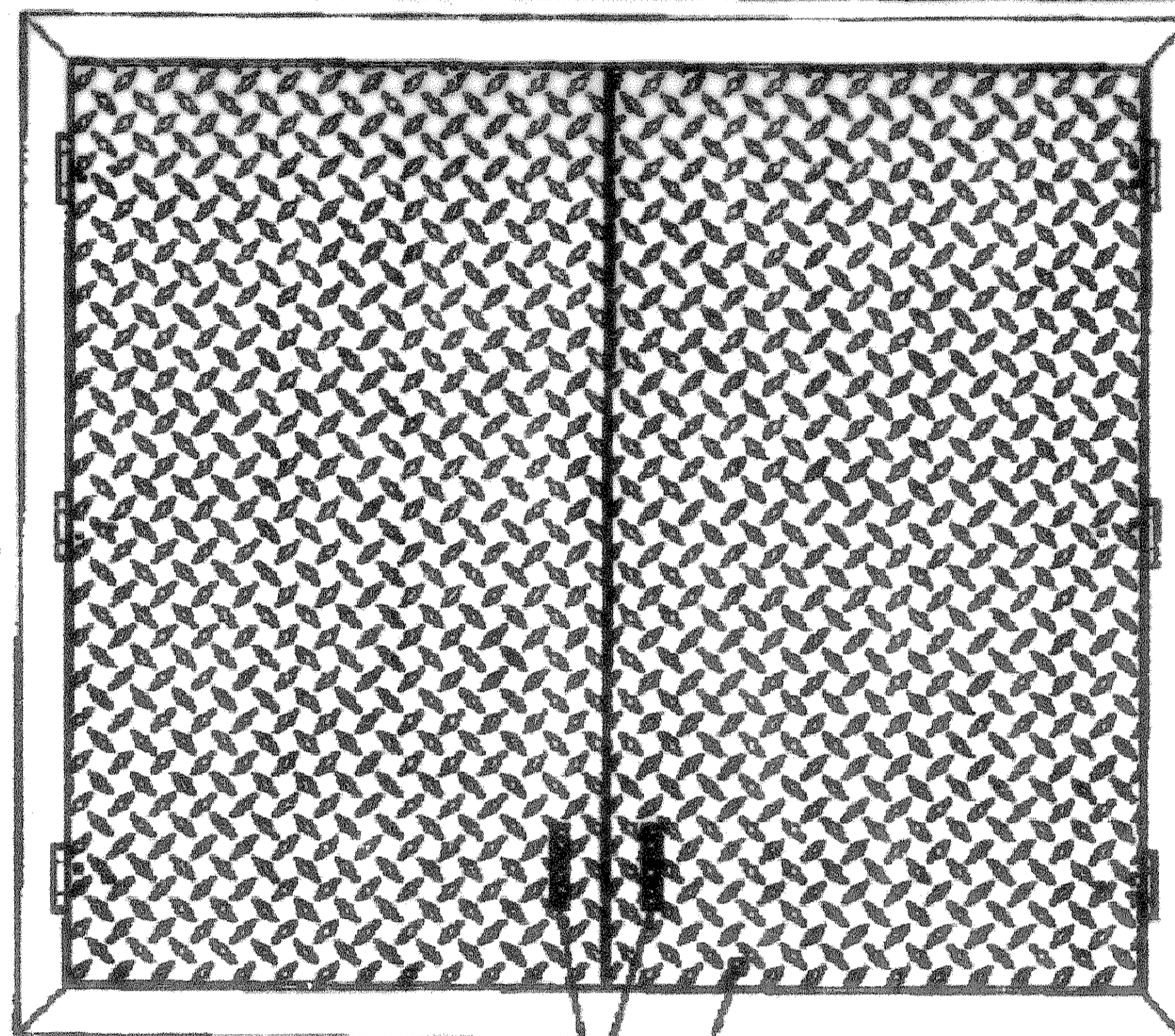
Each door shall be equipped with an aluminum hold open arm. Door shall lock open in the 90 degree position. Each hold open arm shall have a red vinyl grip handle. Hold open arm shall be fastened to the frame with a 1/2" grade 316 stainless steel bolt.

Angle frame shall be of extruded aluminum, with a continuous 1-1/2" anchor flange. Angle frame shall be a minimum of 1/4" thick.

All hardware shall be stainless steel.

Each hatch shall be supplied with a grade 316 stainless steel slam lock, with keyway protected by a threaded aluminum plug. Plug shall be flush with the top of the 1/4" diamond plate. Slam lock shall be fastened with four grade 316 stainless steel bolts and washers.

Each hatch shall be equipped with an aluminum lift handle. The lift handle shall be flush with the top of the 1/4" diamond plate.



PATTERN NO.	DIMENSIONS IN INCHES		UNOBSTRUCTED CLEAR OPENING
	A x A1	B x B1	
ALUMINUM			O x O1
FLED-0-60X78AO	64' x 81'	70-1/4' x 87-1/4'	60' x 78'

PROJECT:  
**"FLED-0-60X78AO" LIGHT DUTY ALUMINUM HATCH**

DRAWING # FLED-0-60X78AO  
 Drawn By: ARO    DATE: 06/16/00    Revised By: JD    Revised: 02/15/02

**FLYGT** ITT Flygt Corporation  
 P.O. Box 1004  
 Trumbull, Connecticut 06811  
 Phone (203) 380-4700 Fax (203) 380-4705

REVISED TO CONFORM TO CONSTRUCTION RECORDS.  
 DATE: 1/2/04

DOUPHRADE & ASSOCIATES, INC.  
 ENGINEERING - PROJECT MANAGEMENT - SURVEYING  
 2285 RIDGE RD., # 200 ROCKWALL, TEXAS 75087  
 PHONE: (972)771-9004 FAX: (972)771-9005

ACCESS DOOR DETAIL  
 THOMPSON BRANCH LIFT STATION  
 STONEY HOLLOW ADDITION  
 CITY OF ROCKWALL, ROCKWALL COUNTY, TEXAS

REVISION  
 W.L.D.  
 CHECKED  
 K.E.B.  
 DRAWN  
 2/8/02  
 DATE  
 9907LS5  
 PROJECT  
 39  
 OF  
 48