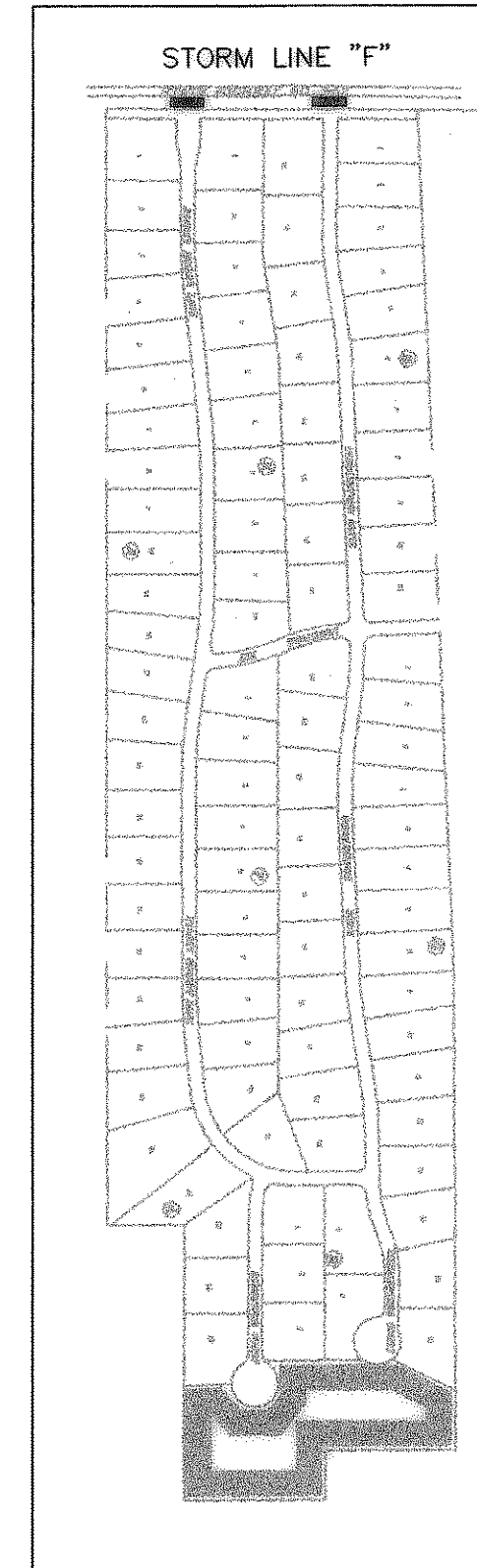
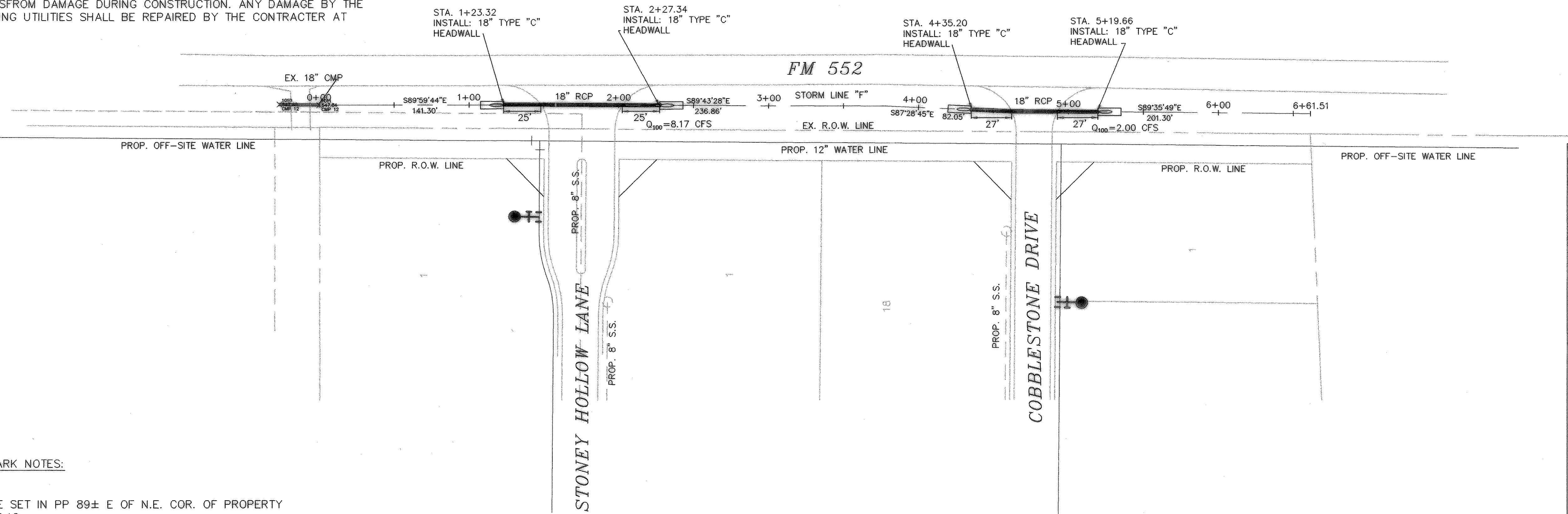
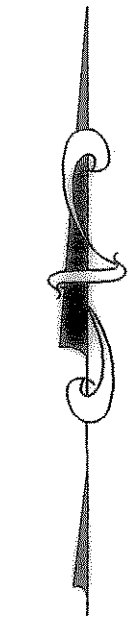
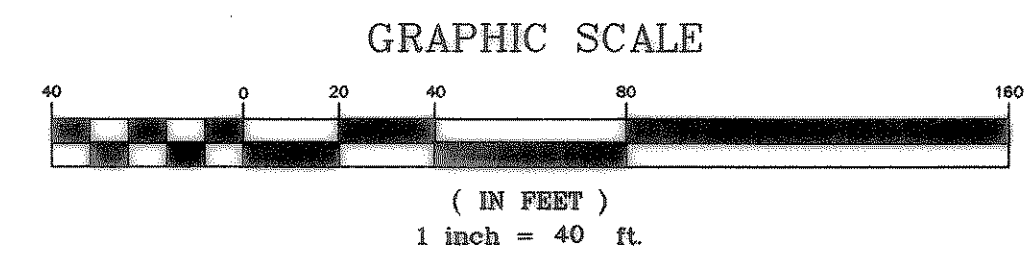


CAUTION!!!
UNDERGROUND UTILITIES

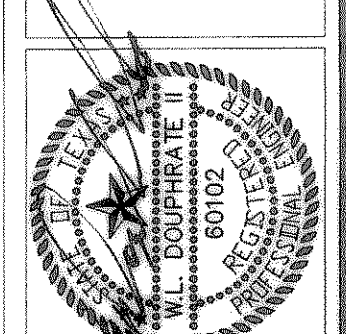
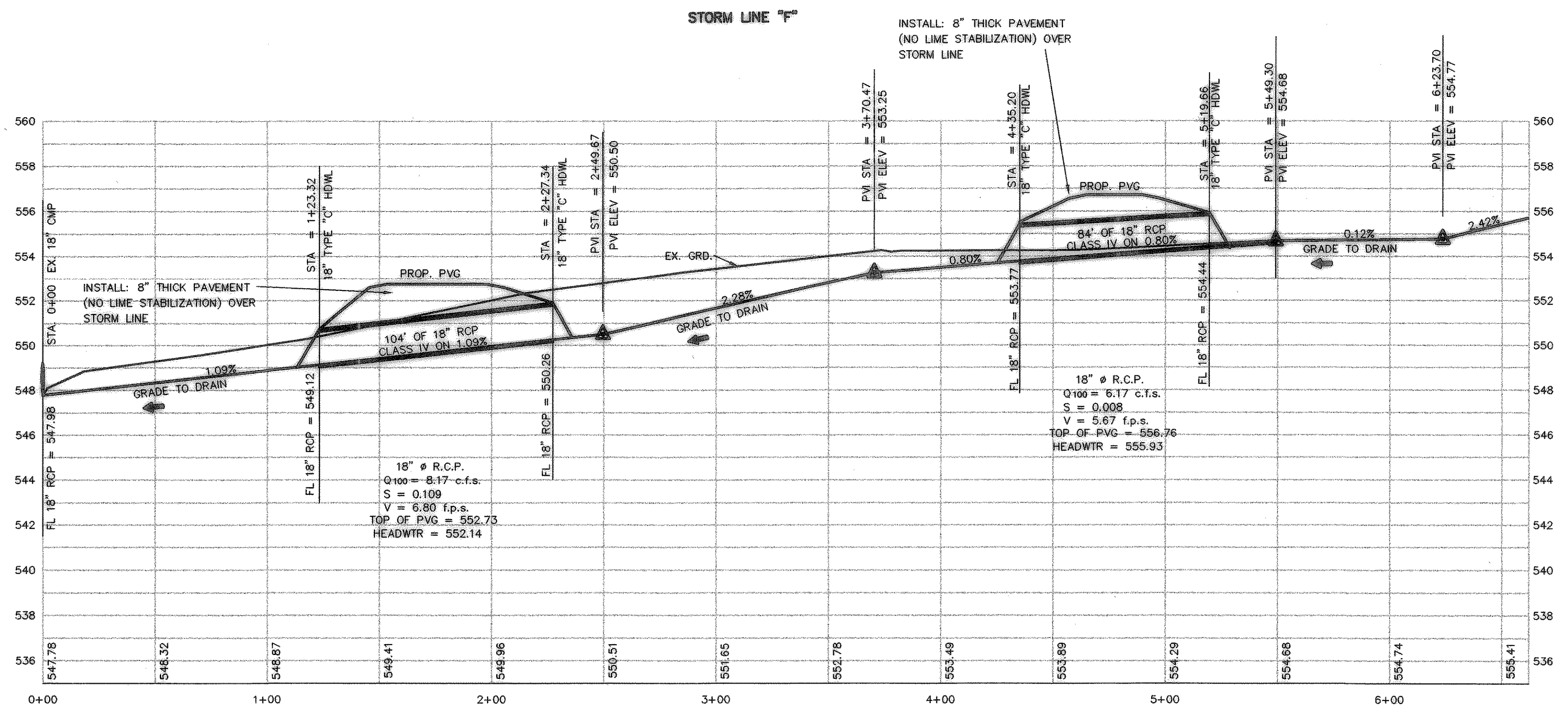
EXISTING UTILITIES AND UNDERGROUND FACILITIES INDICATED ON THESE PLANS HAVE BEEN LOCATED FROM REFERENCE INFORMATION SUPPLIED BY VARIOUS OWNERS OF THE FACILITIES. THE ENGINEER DOES NOT ACCEPT THE RESPONSIBILITY FOR THE UTILITY LOCATIONS SHOWN. IT SHALL BE THE RESPONSIBILITY OF THE CONTRACTOR TO VERIFY BOTH HORIZONTALLY AND VERTICALLY THE LOCATION OF ALL EXISTING UTILITIES AND UNDERGROUND FACILITIES PRIOR TO CONSTRUCTION. TO TAKE NECESSARY PRECAUTIONS IN ORDER TO PROTECT ALL FACILITIES ENCOUNTERED, AND TO NOTIFY THE ENGINEER PROMPTLY OF ALL CONFLICTS OF THE WORK WITH EXISTING FACILITIES. THE CONTRACTOR SHALL PRESERVE AND PROTECT ALL EXISTING FACILITIES FROM DAMAGE DURING CONSTRUCTION. ANY DAMAGE BY THE CONTRACTOR TO EXISTING UTILITIES SHALL BE REPAIRED BY THE CONTRACTOR AT HIS EXPENSE.



BENCHMARK NOTES:

R.R. SPIKE SET IN PP 89± E OF N.E. COR. OF PROPERTY
ELEV: 558.16

R.R. SPIKE SET IN PP 2± WEST OF N.W. COR. OF PROPERTY
ELEV: 549.83



THE SEAL APPEARING ON THIS DOCUMENT WAS AUTHORIZED BY THE BOARD OF ENGINEERING EXAMINERS, STATE OF TEXAS, LICENSE NO. 80102 ON 8/15/02

DOUPHRATE & ASSOCIATES, INC.
ENGINEERING - PROJECT MANAGEMENT - SURVEYING
2235 RIDGE RD., # 200 ROCKWALL, TEXAS 75087
PHONE: (972)771-9004 FAX: (972)771-9005

STORM SEWER PLAN & PROFILE
LINE F
STONEY HOLLOW ADDITION
CITY OF ROCKWALL, ROCKWALL COUNTY

REV. 4-29-02
PER CITY COMMENTS
REV. 6-04-02
PER CITY COMMENTS

REVISION	
CHECKED	W.L.D.
DRAWN	KEB.
DATE	01/26/02
PROJECT	9907STM4
	32A
	OF
	48

REVISED TO CONFORM TO CONSTRUCTION RECORDS.
DATE: 4/12/02