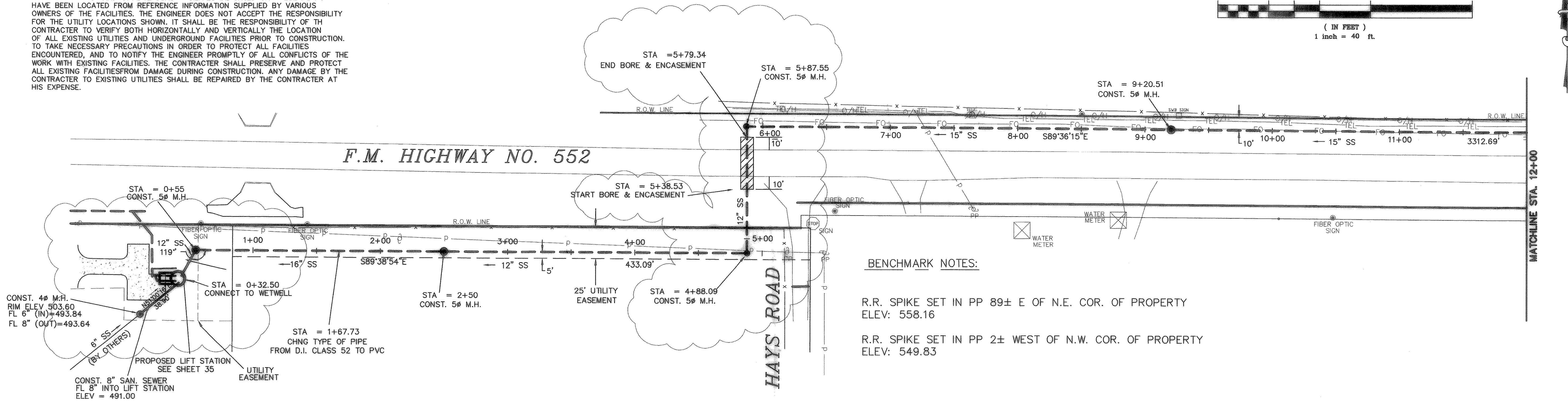
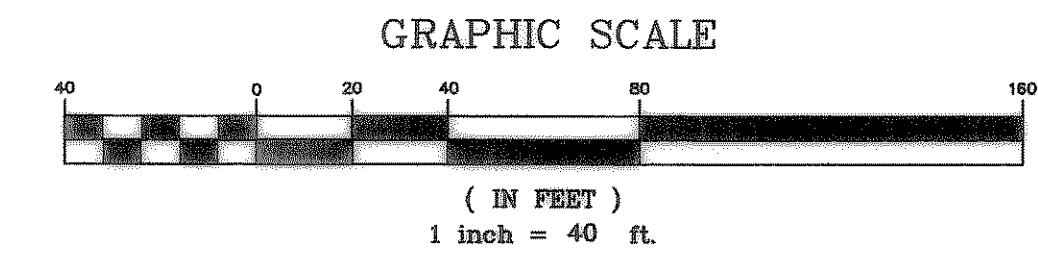
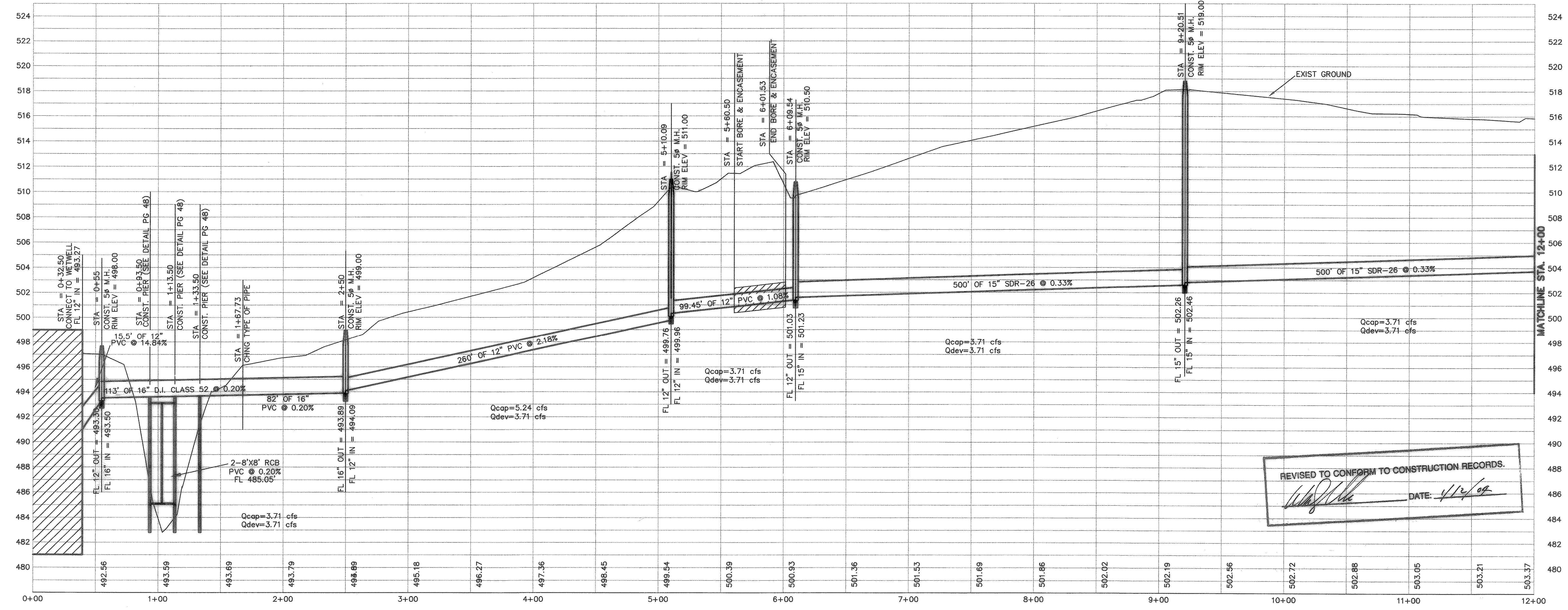


**CAUTION!!!**  
**UNDERGROUND UTILITIES**

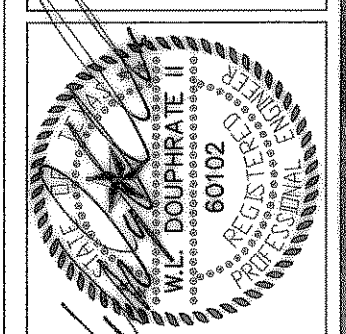
EXISTING UTILITIES AND UNDERGROUND FACILITIES INDICATED ON THESE PLANS HAVE BEEN LOCATED FROM REFERENCE INFORMATION SUPPLIED BY VARIOUS OWNERS OF THE FACILITIES. THE ENGINEER DOES NOT ACCEPT THE RESPONSIBILITY FOR THE UTILITY LOCATIONS SHOWN. IT SHALL BE THE RESPONSIBILITY OF THE CONTRACTOR TO VERIFY BOTH HORIZONTALLY AND VERTICALLY THE LOCATION OF ALL EXISTING UTILITIES AND UNDERGROUND FACILITIES PRIOR TO CONSTRUCTION. TO TAKE NECESSARY PRECAUTIONS IN ORDER TO PROTECT ALL FACILITIES ENCOUNTERED, AND TO NOTIFY THE ENGINEER PROMPTLY OF ALL CONFLICTS OF THE WORK WITH EXISTING FACILITIES. THE CONTRACTOR SHALL PRESERVE AND PROTECT ALL EXISTING FACILITIES FROM DAMAGE DURING CONSTRUCTION. ANY DAMAGE BY THE CONTRACTOR TO EXISTING UTILITIES SHALL BE REPAIRED BY THE CONTRACTOR AT HIS EXPENSE.



**BENCHMARK NOTES:**  
 R.R. SPIKE SET IN PP 89± E OF N.E. COR. OF PROPERTY  
 ELEV: 558.16  
 R.R. SPIKE SET IN PP 2± WEST OF N.W. COR. OF PROPERTY  
 ELEV: 549.83



REVISED TO CONFORM TO CONSTRUCTION RECORDS.  
 [Signature] DATE: 4/12/09



THE SEAL APPEARING ON THIS DOCUMENT WAS AUTHORIZED BY THE BOARD OF ENGINEERING EXAMINERS OF THE STATE OF TEXAS P.E. NO. 80102 ON 1/2/09

**DOUPHRATE & ASSOCIATES, INC.**  
 ENGINEERING - PROJECT MANAGEMENT - SURVEYING  
 2235 RIDGE RD., # 200 ROCKWALL, TEXAS 75087  
 PHONE: (972)771-8004 FAX: (972)771-9005

**OFF-SITE SAN. SEW. PLAN & PROFILE**  
 STA. 0+00 - 12+00  
 STONEY HOLLOW ADDITION  
 CITY OF ROCKWALL, ROCKWALL COUNTY, TEXAS

3-18-03  
 REV. BORING ON 552  
 5-12-03  
 MOVED WET WELL

REVISION

W.L.D.  
 CHECKED

K.E.B.  
 DRAWN

2/02  
 DATE

9907OFFSITES1  
 PROJECT