

THE SEAL APPEARING ON THIS PLAN IS AUTHORIZED BY THE BOARD OF PROFESSIONAL ENGINEERS, STATE OF TEXAS, P.E. NO. 60102 ON 4/1/02

DOUPHRADE & ASSOCIATES, INC.  
ENGINEERING - PROJECT MANAGEMENT - SURVEYING  
2285 RIDGE RD., # 200 ROCKWALL, TEXAS 75087  
PHONE: (972)771-9004 FAX: (972)771-9005

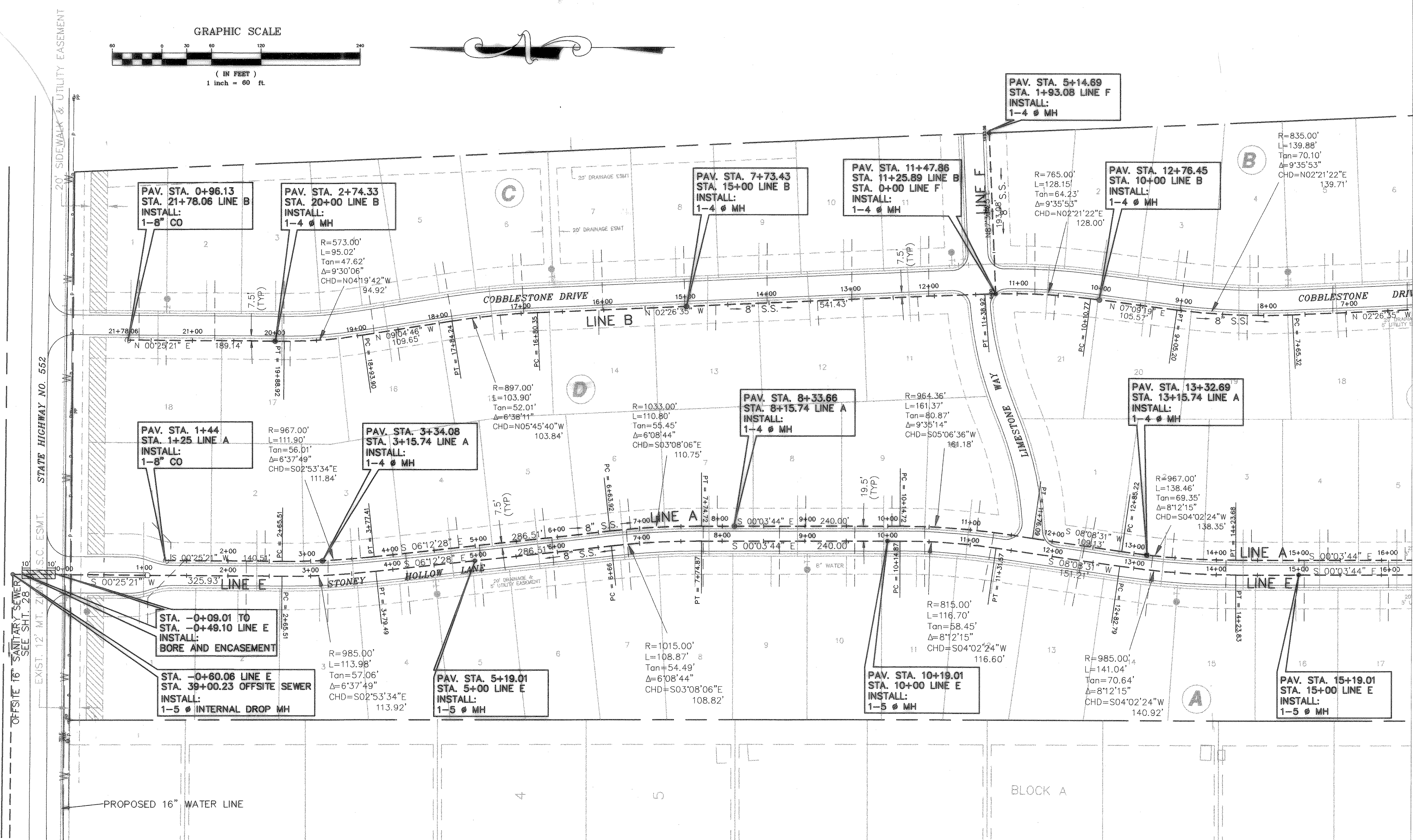
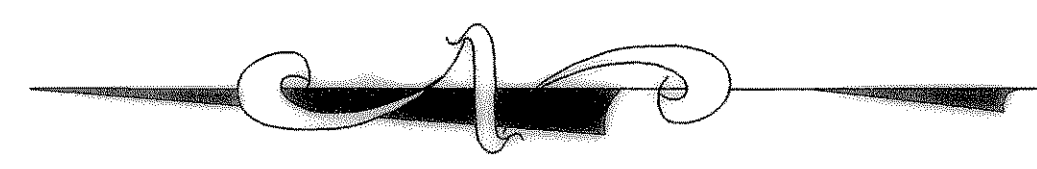
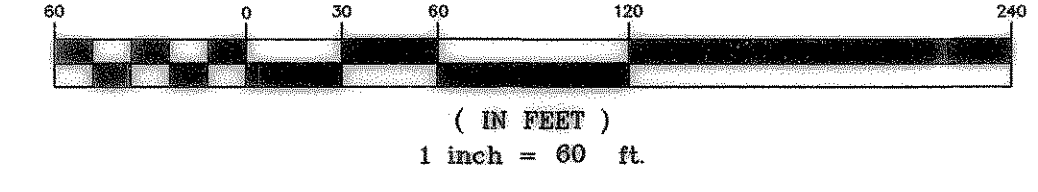
SANITARY SEWER PLAN  
STONEY HOLLOW ADDITION  
CITY OF ROCKWALL  
ROCKWALL COUNTY, TEXAS

REV. 4-29-02  
REV. 6-04-02  
PER CITY COMMENTS

REVISION  
W.L.D.  
CHECKED  
K.E.B.  
DRAWN  
4/02  
DATE  
9907SEW-1  
PROJECT

20A  
OF

GRAPHIC SCALE



PAV. STA. 0+96.13  
STA. 21+78.06 LINE B  
INSTALL:  
1-8" CO

PAV. STA. 2+74.33  
STA. 20+00 LINE B  
INSTALL:  
1-4" MH

PAV. STA. 7+73.43  
STA. 15+00 LINE B  
INSTALL:  
1-4" MH

PAV. STA. 11+47.86  
STA. 11+25.89 LINE B  
STA. 0+00 LINE F  
INSTALL:  
1-4" MH

PAV. STA. 12+76.45  
STA. 10+00 LINE B  
INSTALL:  
1-4" MH

PAV. STA. 1+44  
STA. 1+25 LINE A  
INSTALL:  
1-8" CO

PAV. STA. 3+34.08  
STA. 3+15.74 LINE A  
INSTALL:  
1-4" MH

PAV. STA. 8+33.66  
STA. 8+15.74 LINE A  
INSTALL:  
1-4" MH

PAV. STA. 13+32.69  
STA. 13+15.74 LINE A  
INSTALL:  
1-4" MH

STA. -0+09.01 TO  
STA. -0+49.10 LINE E  
INSTALL:  
BORE AND ENCASEMENT

STA. -0+60.06 LINE E  
STA. 39+00.23 OFFSITE SEWER  
INSTALL:  
1-5" INTERNAL DROP MH

PAV. STA. 5+19.01  
STA. 5+00 LINE E  
INSTALL:  
1-5" MH

PAV. STA. 10+19.01  
STA. 10+00 LINE E  
INSTALL:  
1-5" MH

PAV. STA. 15+19.01  
STA. 15+00 LINE E  
INSTALL:  
1-5" MH

BENCHMARK NOTES:

- R.R. SPIKE SET IN PP 89+- E OF N.E. COR. OF PROPERTY  
ELEV: 558.16
- R.R. SPIKE SET IN PP 2+- WEST OF N.W. COR. OF PROPERTY  
ELEV: 549.83

SANITARY SEWER LINES TO BE 7.5' FROM EDGE OF P.V.M.T.

LEGEND

----- = SANITARY SEWER LATERAL SERVICE

NOTE

NO SERVICES/LATERALS SHALL BE CONNECTED TO LINE "E"

REVISED TO CONFORM TO CONSTRUCTION RECORDS.  
DATE: 4/02