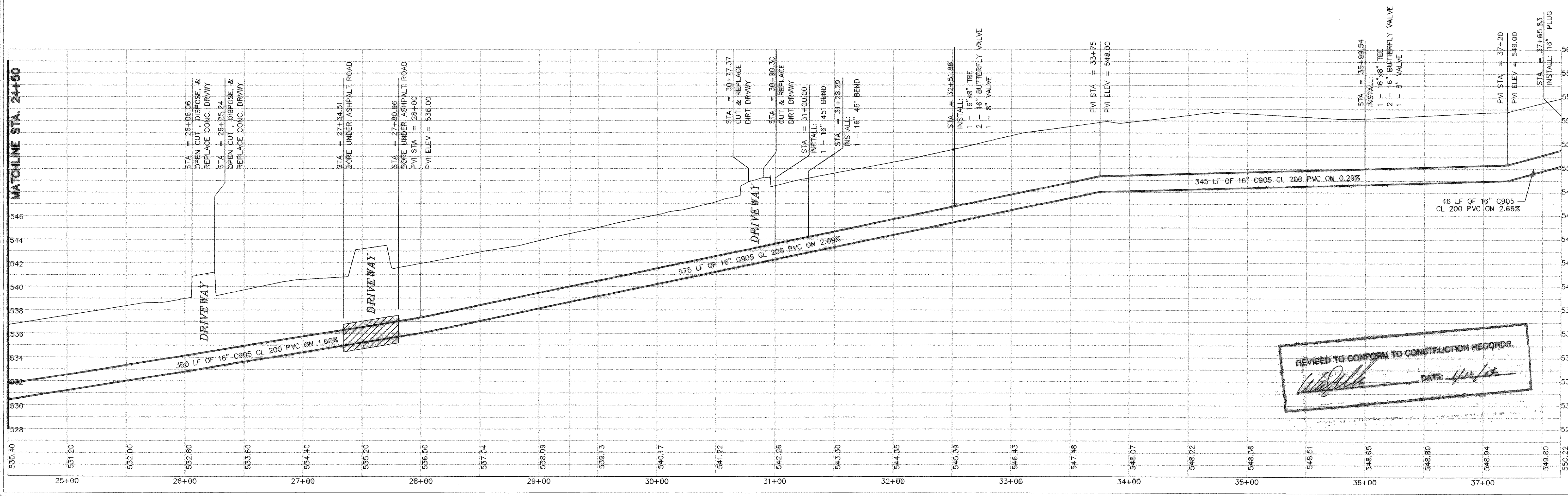
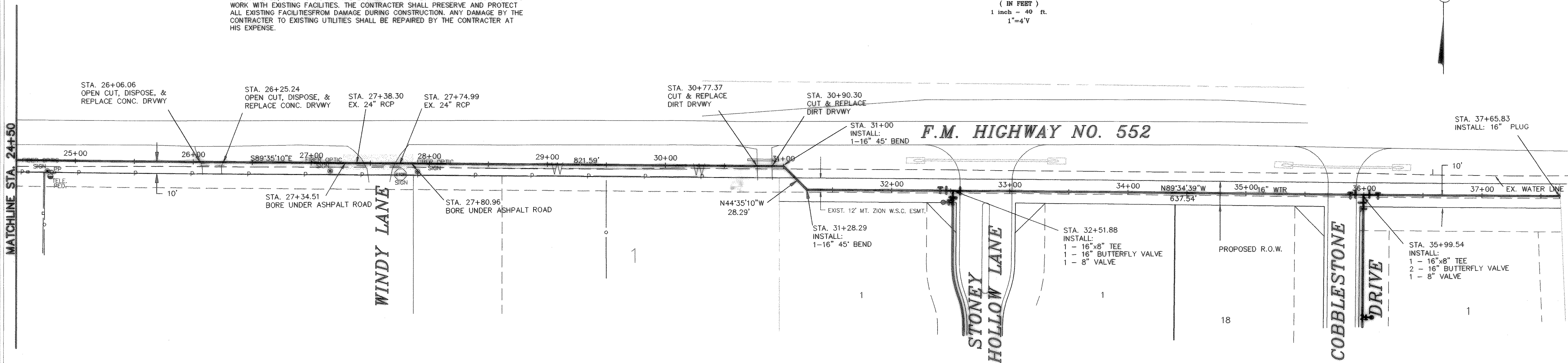
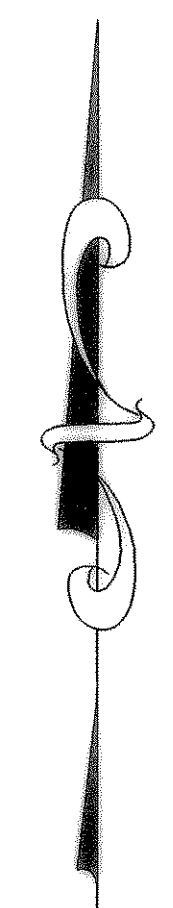
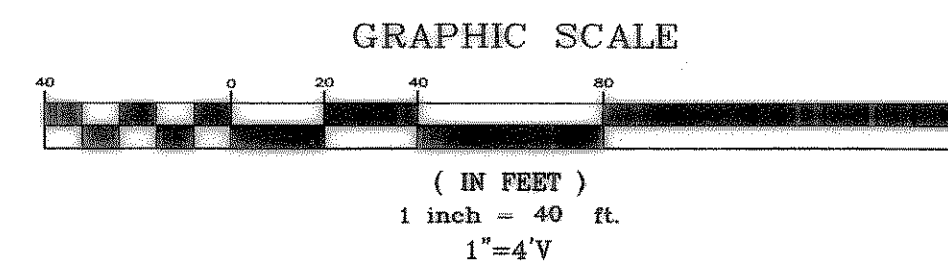
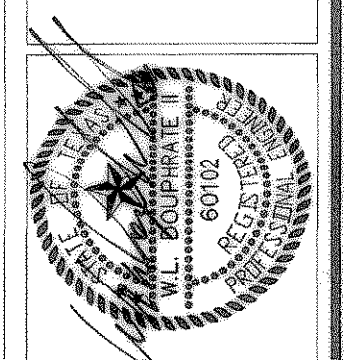


CAUTION!!!
UNDERGROUND UTILITIES

EXISTING UTILITIES AND UNDERGROUND FACILITIES INDICATED ON THESE PLANS HAVE BEEN LOCATED FROM REFERENCE INFORMATION SUPPLIED BY VARIOUS OWNERS OF THE FACILITIES. THE ENGINEER DOES NOT ACCEPT THE RESPONSIBILITY FOR THE UTILITY LOCATIONS SHOWN. IT SHALL BE THE RESPONSIBILITY OF THE CONTRACTOR TO VERIFY BOTH HORIZONTALLY AND VERTICALLY THE LOCATION OF ALL EXISTING UTILITIES AND UNDERGROUND FACILITIES PRIOR TO CONSTRUCTION. TO TAKE NECESSARY PRECAUTIONS IN ORDER TO PROTECT ALL FACILITIES ENCOUNTERED, AND TO NOTIFY THE ENGINEER PROMPTLY OF ALL CONFLICTS OF THE WORK WITH EXISTING FACILITIES. THE CONTRACTOR SHALL PRESERVE AND PROTECT ALL EXISTING FACILITIES FROM DAMAGE DURING CONSTRUCTION. ANY DAMAGE BY THE CONTRACTOR TO EXISTING UTILITIES SHALL BE REPAIRED BY THE CONTRACTOR AT HIS EXPENSE.



REVISED TO CONFORM TO CONSTRUCTION RECORDS.
[Signature] DATE: 4/12/18



THE SEAL APPEARING ON THIS PLAN IS THE PROPERTY OF W.L. DOUPHRATE, INC. NO. 60102 ON 4/12/18

DOUPHRATE & ASSOCIATES, INC.
ENGINEERING - PROJECT MANAGEMENT - SURVEYING
2235 RIDGE RD., # 200 ROCKWALL, TEXAS 75087
PHONE: (972)771-8004 FAX: (972)771-8005

STA. 24+50 TO STA. 37+57.55
OFFSITE 16" WATER LINE
STONEY HOLLOW ADDITION
CITY OF ROCKWALL, ROCKWALL COUNTY, TEXAS

REV. 9-24-02
MOVED WTR. TO 10' FROM NEW R.O.W.

REVISION	W.L.D. CHECKED	A.J.W. DRAWN	DATE	PROJECT
			6/14/02	9907OFFWTR3-16