

CIVIL CONSTRUCTION PLANS

# STONE HOLLOW ADDITION

J.M. GASS SURVEY, ABSTRACT NO. 88

CITY OF ROCKWALL

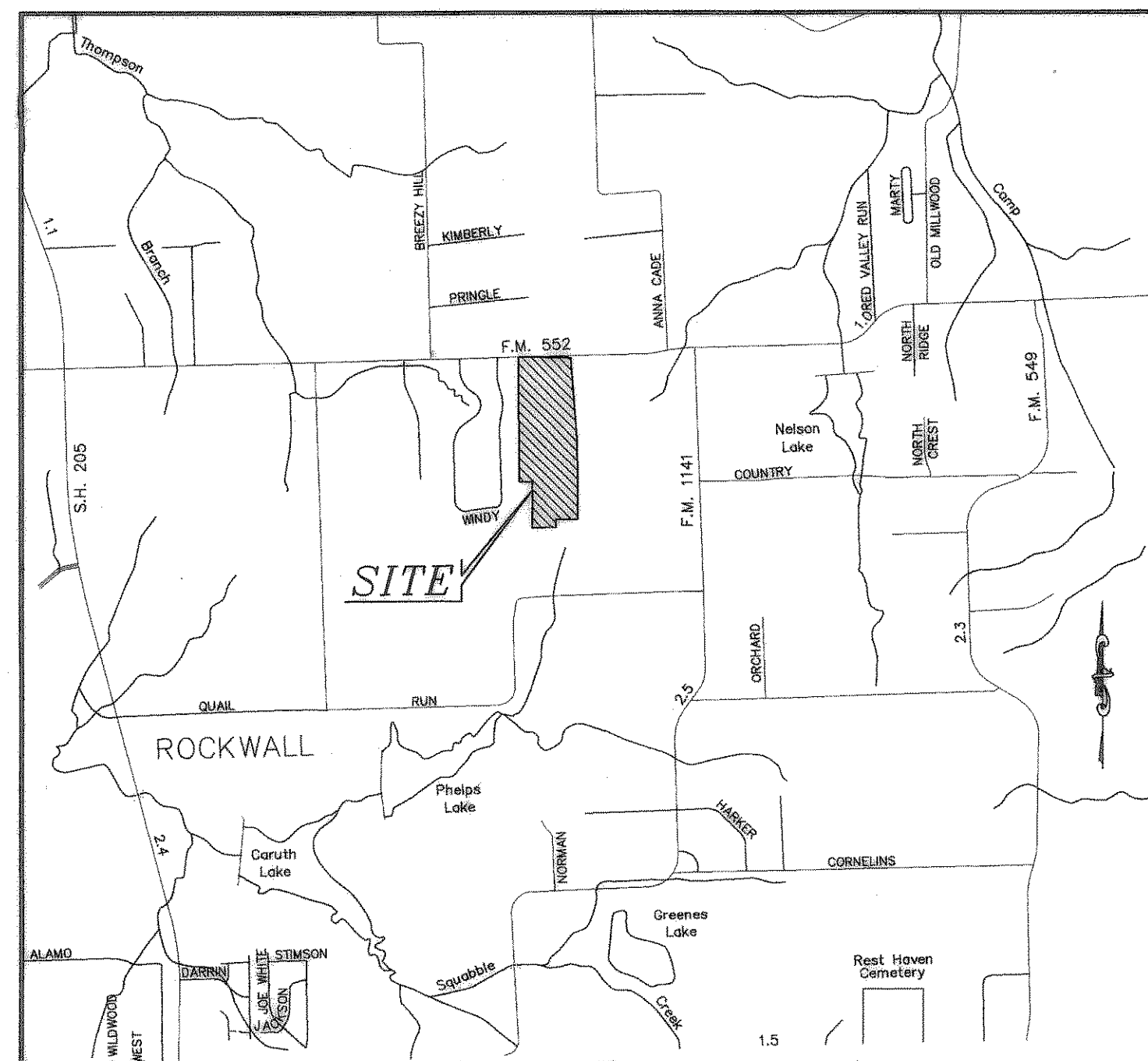
ROCKWALL COUNTY, TEXAS

45.19 AC.

SHEET INDEX

GENERAL NOTES  
(APPLICABLE TO ALL SHEETS)

1. Excavated material shall be placed as directed by the Owner.
2. Construction shall meet the requirements of the latest revision of the Standards of Design and Standard Details for the City of Rockwall and NTCOG standards.
3. All fill areas to be density controlled and compacted to 95% density at optimum moisture content. Compacted with sheep foot roller.
4. Pavement thickness shall be a minimum of 6" thickness with a strength of 3600 psi at 28 days and reinforced with No.3 bar at 24" centers each way.
5. All streets shall be constructed with min. 6% lime stabilized subgrade compacted to 95% standard proctor density, lime series needs to be performed to verify.
6. It shall be the responsibility of the Contractor to locate and verify all existing utilities prior to the beginning of construction to insure no conflicts between all utility lines.
7. Where water pipelines either cross or otherwise come within 9 feet of a sanitary sewer pipeline, the sewer pipeline shall be with a minimum working pressure Class 150 psi.
8. All water lines installed to be PVC pipe Class 200 conforming to AWWA Standard C-900, fitting shall be mechanical or O-ring.
9. All water lines are to be installed a minimum of 48" deep measured from top of pipe.
10. All storm inlets shall be cast-in-place.
11. Utility contractor shall use MEGALUGS when install the water line and double strap services when installing the services.
12. Water services shall be a minimum of 1" schedule SD-9 polyethylene pipe installed with two in-line nylon ball cutoff valves inside the meter box. Corporation cock shall be Mueller No. H-15000 w/ straight coupling nut or approved equal. Curb stops shall be Mueller No. H-15174 MK oriseal or approved equal.
13. All water lines shall be pressure tested and disinfected in accordance with AWWA C 601.
14. All gate valves shall be Mueller or approved equal and conform to AWWA C-500 specifications. All gate valves shall be iron body, bronze mounted, double disk, parallel seat, non-rising stem, internal wedging type.
15. All fire hydrants shall be located 2' to 6' behind curb line. All fire hydrants shall be Mueller or approved equal.
16. All handicap ramps shall be installed with paving.
17. It is the responsibility of the contractor, before construction, to notify the engineer of any conflicts or discrepancies between actual construction and designed plans.



VICINITY MAP

1. COVER SHEET
2. FILE PLAT
3. OWNER'S CERTIFICATE
- 4A. DRAINAGE AREA MAP
- 4B. DRAINAGE EXHIBIT MAP
- 4C. DRIVEWAY CULVERTS
5. LOT GRADING PLAN
6. LOT GRADING PLAN
7. LOT GRADING PLAN
- 8A. TREE PLAN
- 8B. TREE PLAN
9. PAVING PLAN & PROFILE-STONEY HOLLOW LN. STA: 0+00 TO 12+00
10. PAVING PLAN & PROFILE-STONEY HOLLOW LN. STA: 12+00 TO 24+00
11. PAVING PLAN & PROFILE-STONEY HOLLOW LN. STA: 24+00 TO 25+77.03, COBBLESTONE COURT & SANDSTONE COURT
12. PAVING PLAN & PROFILE-COBLESTONE DR. STA: 0+00 TO 12+00
13. PAVING PLAN & PROFILE-COBLESTONE DR. STA: 12+00 TO 24+00
14. PAVING PLAN & PROFILE-LIMESTONE WAY
15. PAVING PLAN & PROFILE-F.M. ROAD NO. 552
16. WATER PLAN
17. OFF-SITE WATER PLAN - STA. 0+00 TO 12+00
18. OFF-SITE WATER PLAN - STA. 12+00 TO 24+50
19. OFF-SITE WATER PLAN - STA. 24+50 TO 37+57.55
- 20A. ON-SITE SANITARY SEWER PLAN
- 20B. ON-SITE SANITARY SEWER PLAN
21. SANITARY SEWER PROFILE - LINE A
22. SANITARY SEWER PROFILE - LINE B
23. SANITARY SEWER PROFILE - LINE E
24. SANITARY SEWER PROFILE - LINES C, D, & F
25. OFF-SITE SANITARY SEWER PLAN & PROFILE - STA. 0+00 TO 12+00
26. OFF-SITE SANITARY SEWER PLAN & PROFILE - STA. 12+00 TO 24+00
27. OFF-SITE SANITARY SEWER PLAN & PROFILE - STA. 24+00 TO 36+00
28. OFF-SITE SANITARY SEWER PLAN & PROFILE - STA. 36+00 TO 39+00.23
29. STORM SEWER PLAN & PROFILE - LINES A,B,C
30. STORM SEWER PLAN & PROFILE - LINES D & E
31. STORM SEWER PLAN & PROFILE - DETENTION POND & OUTFALLS
- 32A. STORM SEWER PLAN & PROFILE - LINE F
- 32B. GRADE TO DRAIN PLAN & PROFILE
33. EROSION CONTROL PLAN
34. EROSION CONTROL DETAILS
35. LIFT STATION - DIMENSIONAL PLAN
36. LIFT STATION - PHASE I PUMP DIMENSIONAL PLAN
37. LIFT STATION - ULTIMATE PUMP DIMENSIONAL PLAN
38. LIFT STATION - LAYOUT & GRADING PLAN
39. LIFT STATION - COVER DETAIL
- 39A. LIFT STATION - PHASE I DRAINAGE AREA
40. LIFT STATION - ELECTRICAL 1
41. LIFT STATION - ELECTRICAL 2
42. LIFT STATION - ELECTRICAL 3
43. LIFT STATION - ELECTRICAL 4
44. LIFT STATION - ELECTRICAL 5
45. FORCE MAIN PLAN & PROFILE - STA. 0+00 TO 12+00
46. FORCE MAIN PLAN & PROFILE - STA. 12+00 TO 24+00
47. FORCE MAIN PLAN & PROFILE - STA. 24+00 TO 33+06.28
48. DETAILS

REVISED TO CONFORM TO CONSTRUCTION RECORDS.

*[Signature]* DATE: 4/14/02

**OWNER/DEVELOPER:**  
**D.R. HORTON-TEXAS, LTD.**  
310 E. I.H. 30, SUITE 280  
GARLAND, TEXAS 75043  
(972) 226-4333

**DOUPHRADE & ASSOCIATES, INC.**  
ENGINEERING • PROJECT MANAGEMENT • SURVEYING  
P.O. BOX 1336 ROCKWALL, TEXAS 75087  
PHONE: (972)771-9004 FAX: (972)771-9005

THE SEAL APPEARING ON THIS DOCUMENT WAS AUTHORIZED BY W.L. DOUPHRADE II TEXAS P.E. NO. 60102 ON 8/5/02



NOTE:  
CONTRACTOR TO VERIFY IN THE FIELD THE LOCATION OF ALL EXISTING UTILITIES PRIOR TO CONSTRUCTION. INFORMATION PROVIDED WITHIN THESE PLANS DOES NOT RELIEVE THE CONTRACTOR OF THE FULL AND TOTAL RESPONSIBILITY FOR THE PROTECTION OF EXISTING UTILITIES NOR ANY DAMAGES CAUSED BY SAID CONTRACTOR DURING CONSTRUCTION.