

BENCHMARK INFORMATION:

BM #1 - ELEV: 518.83
CITY OF ROCKWALL GPS CONTROL MONUMENT #R011.

BM #2 - ELEV.: 490.08
"or" CUT SET AT NORTHWEST CORNER OF CONCRETE PAD, APPROX. 19' SOUTH OF THE MOST EASTERLY CORNER OF THE SUBJECT PROPERTY AND THE SOUTHEAST CORNER OF LOT 2, PHASE TWO STONEBRIDGE CENTER.

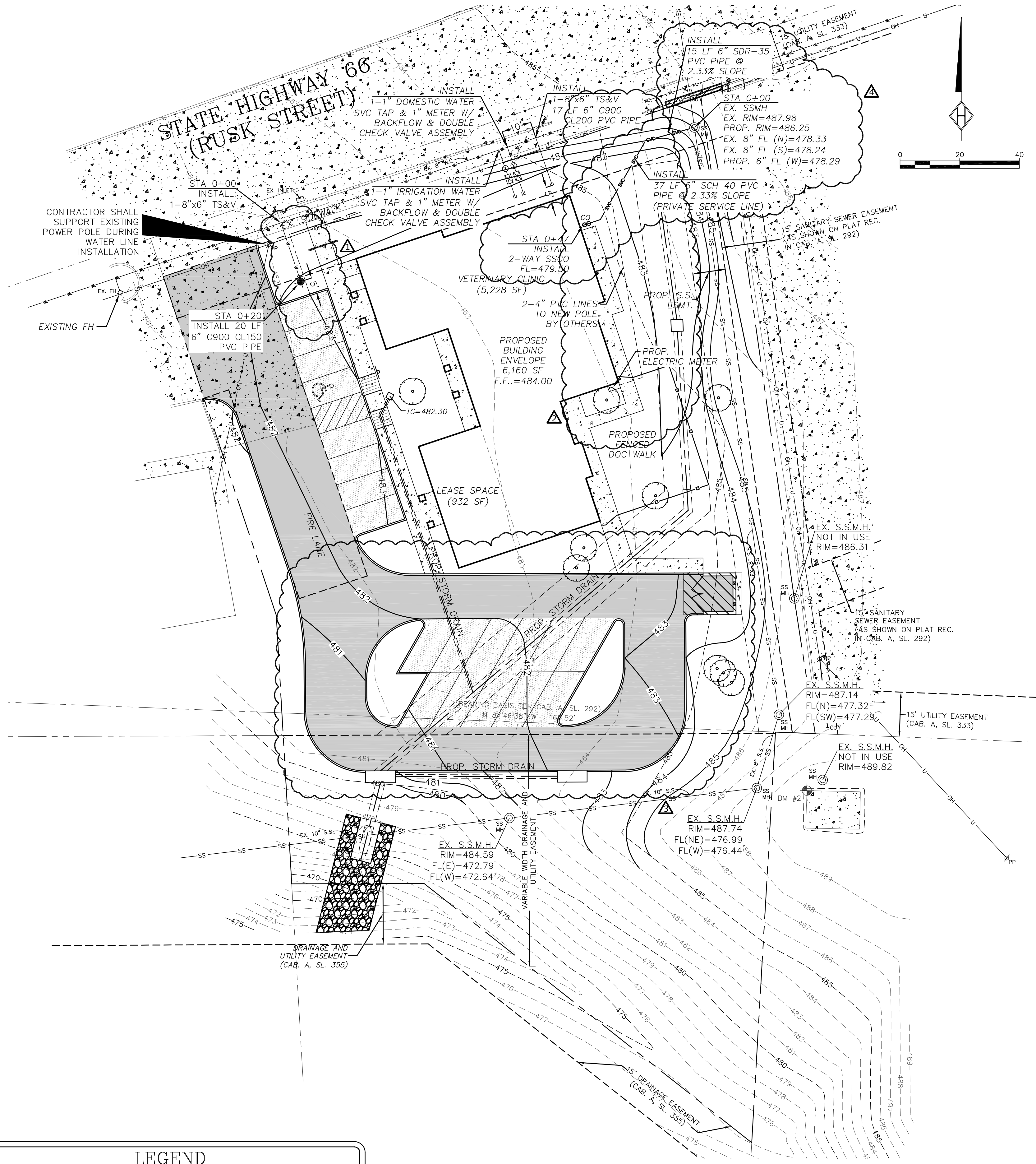
LEGEND

I.R.F.	IRON ROD FOUND	☉	POWER POLE
I.R.S.	IRON ROD SET	☼	LIGHT POLE
"X"	CUT X IN CONCRETE	⊗	WATER VALVE
F.C.P.	FENCE CORNER POST	⊙ SSMH	SANITARY SEWER MANHOLE
	ASPHALT	⊕	FIRE HYDRANT
⊙	TELEPHONE MANHOLE	⊗ WM	WATER METER

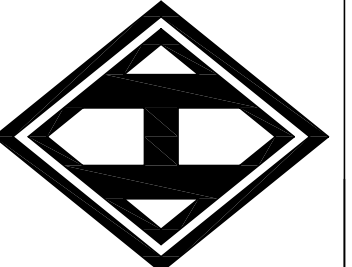
RECORD DRAWING

To the best of our knowledge, Homer Engineering, Inc., hereby states that this plan is a Record Drawing. The information provided is based on surveying conducted at the site and information provided by the contractor.

Steven R. Homer
 Steven R. Homer, P.E. #86942
 Date: 07-01-2008



HOMER ENGINEERING, INC.
 ENGINEERING & PLANNING
 CIVIL ENGINEERING, SITE & LAND PLANNING



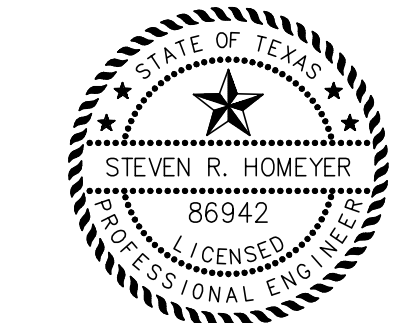
STONEBRIDGE VETERINARY
 1.085 ACRES
 ZONED - GR/SH 66 OVERLAY
 CITY OF ROCKWALL
 ROCKWALL COUNTY, TEXAS

UTILITY PLAN

REVISIONS:

- 02/26/08 REVISED FIRE HYDRANT LOCATION.
- 03/13/08 ADDED 4" PVC PIPES FOR ELECTRICAL.
- 03/20/08 REVISED PARKING & DUMPSTER LOCATION TO PROTECT EXISTING TREES.
- 04/18/08 REVISED SSV SVC MATERIALS & ALIGNMENT

DRAWN BY: BSZ
DATE: 10/15/07
HEI #: 07-168
SHEET NO: G7



THE SEAL APPEARING ON THIS DOCUMENT WAS AUTHORIZED BY STEVEN R. HOMER, P.E. 86942 ON JULY 1, 2008.