

OFF-SITE DRAINAGE AREA MAP

SCALE: 1" = 100'

THE TOPOGRAPHIC INFORMATION FOR THE OFF-SITE DRAINAGE AREA MAP WAS OBTAINED FROM THE NORTH CENTRAL TEXAS COUNCIL OF GOVERNMENTS WEBSITE WWW.DFWINFO.COM.

BENCHMARK INFORMATION:

BM #1 - ELEV.: 518.83
CITY OF ROCKWALL GPS CONTROL MONUMENT #R011.

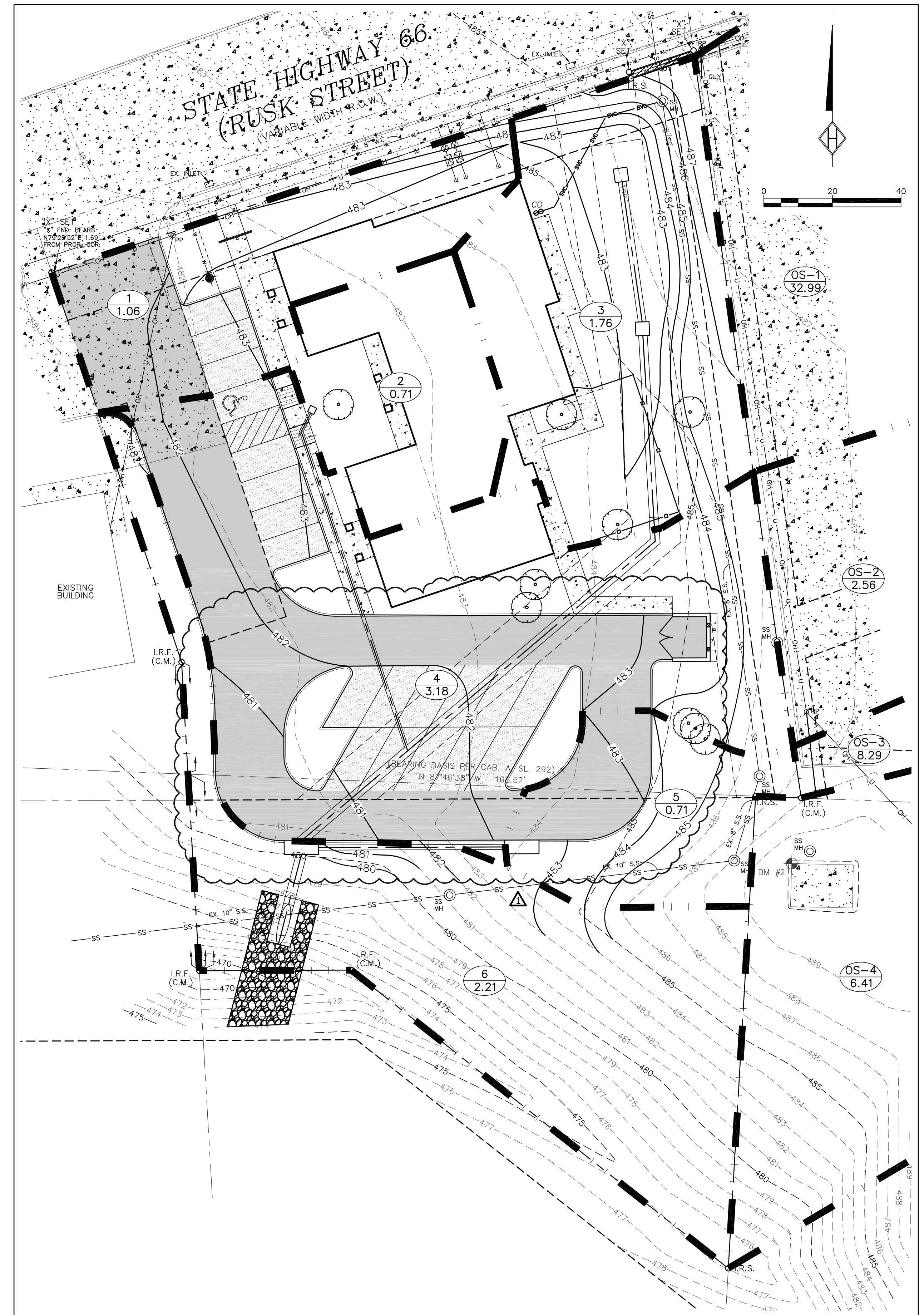
BM #2 - ELEV.: 490.08
"C" CUT SET AT NORTHWEST CORNER OF CONCRETE PAD, APPROX. 19' SOUTH OF THE MOST EASTERLY CORNER OF THE SUBJECT PROPERTY AND THE SOUTHEAST CORNER OF LOT 2, PHASE TWO STONEBRIDGE CENTER.

LEGEND

- DRAINAGE AREA NUMBER Q100 PROPOSED
- DRAINAGE AREA LIMITS
- EXISTING CONTOURS
- PROPOSED CONTOURS
- DIRECTION OF STORMWATER FLOW

DRAINAGE CALCULATIONS

DRAINAGE AREA	AREA ACRES	"C"	Tc (min)	"I-100" (in/hr)	"Q-100" (cfs)	COMMENTS
1	0.12	0.90	10	9.8	1.06	TO OFF-SITE AREA
2	0.08	0.90	10	9.8	0.71	TO PROPOSED AREA INLET
3	0.20	0.90	10	9.8	1.76	TO PROPOSED AREA INLET
4	0.36	0.90	10	9.8	3.18	TO PROPOSED CURB INLET
5	0.08	0.90	10	9.8	0.71	TO PROPOSED CURB INLET
6	0.25	0.90	10	9.8	2.21	TO EXISTING CHANNEL
OS-1	7.48	0.45	10	9.8	32.99	TO ON-SITE AREA 3
OS-2	0.29	0.90	10	9.8	2.56	TO ON-SITE AREA 4
OS-3	0.94	0.90	10	9.8	8.29	TO DRAINAGE ESMT
OS-4	1.87	0.35	10	9.8	6.41	TO DRAINAGE ESMT



PROPOSED DRAINAGE AREA MAP

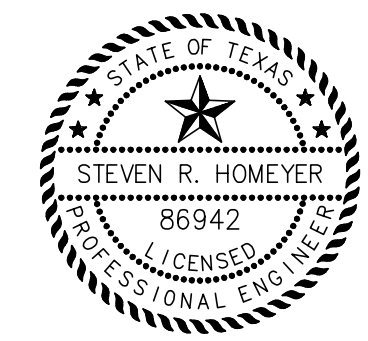
SCALE: 1" = 20'

RECORD DRAWING

To the best of our knowledge, Homeyer Engineering, Inc., hereby states that this plan is a Record Drawing. The information provided is based on surveying conducted at the site and information provided by the contractor.

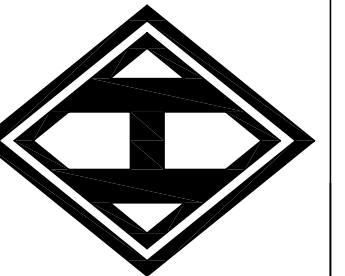
Steven R. Homeyer
Steven R. Homeyer, P.E. #86942

Date: 07-01-2008



THE SEAL APPEARING ON THIS DOCUMENT WAS AUTHORIZED BY STEVEN R. HOMEYER, P.E. #86942 ON JULY 1, 2008

HOMEYER
ENGINEERING, INC.
CIVIL ENGINEERING, PLANNING
SITE & LAND PLANNING
P. O. BOX 294527 • LEWISVILLE, TEXAS • 75039
972.990.0000 • WWW.HOMEYERENGINEERING.COM



STONEBRIDGE VETERINARY
1.085 ACRES
ZONED - GR/SH 66 OVERLAY
CITY OF ROCKWALL
ROCKWALL COUNTY, TEXAS

DRAINAGE AREA
MAP

REVISIONS:
03-20-08
▲ REVISED PARKING & DUMPSTER LOCATION TO PROTECT EXISTING TREES.

DRAWN BY: BSZ

DATE: 10/15/07

HEI #: 07-168

SHEET NO:

G5

P:\00 - PROJECTS - 07-08 - STONEBRIDGE VETERINARY\DWG\CONTRACT\04-DRAINAGE\MAP.DWG
 DATE: 07-01-2008 10:52:38 AM