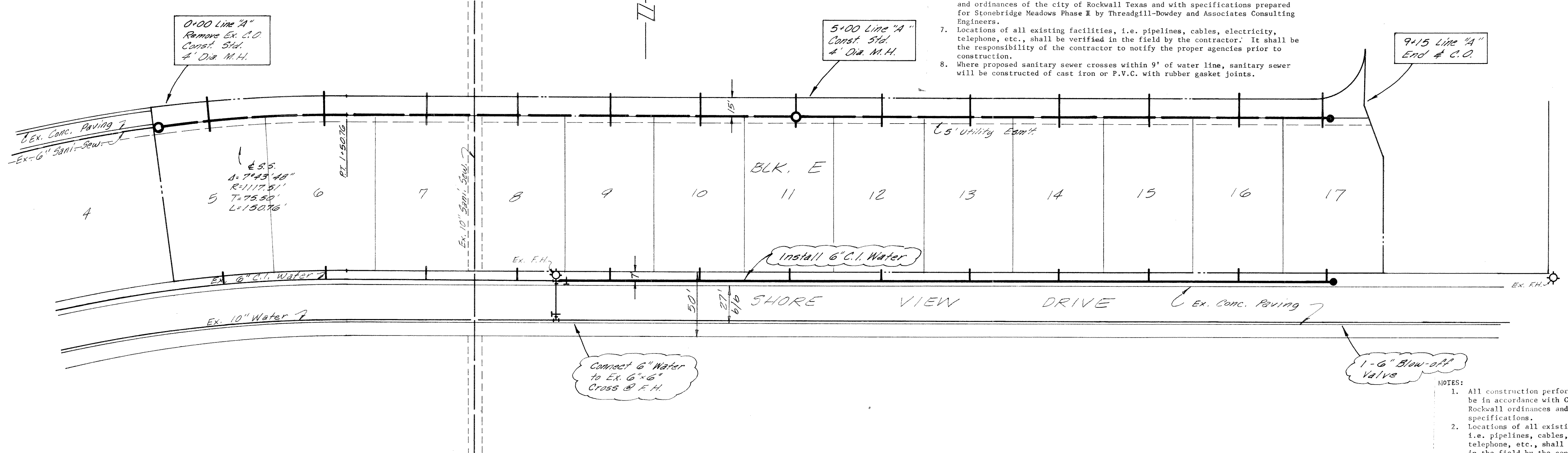
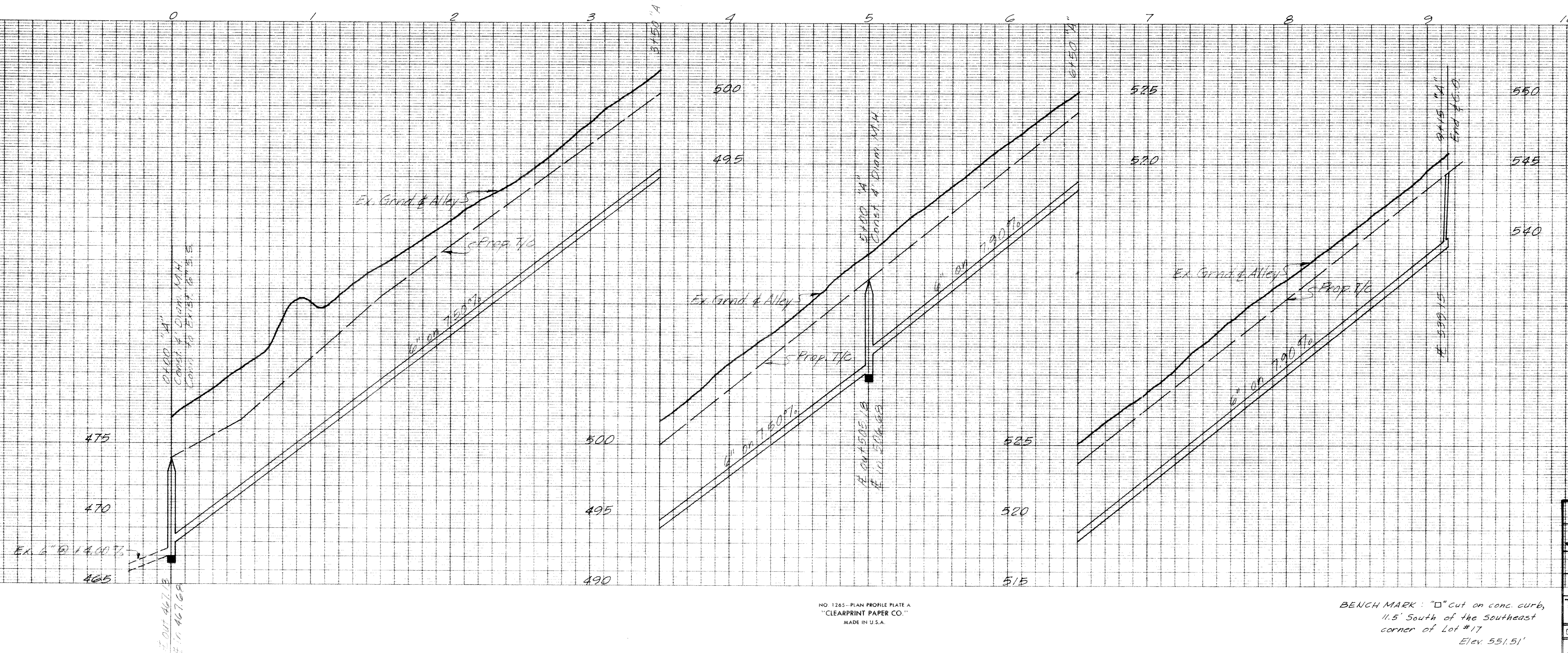


GENERAL NOTES

1. All sewer lines shall be vitrified clay sewer pipe.
2. All joints shall be closed with rubber gaskets complying with ASTM specification.
3. Sewer service line shall be laid to each lot and shall be vitrified clay sewer pipe having a minimum diameter of four (4) inches and extended two (2) points inside property.
4. Where existing sanitary sewer crosses within 9' of water line, sanitary sewer must be encased in concrete.
5. Water mains shall be cast iron pipe complying with current AWWA specifications and shall have a minimum cover of thirty-six (36) inches.
6. All construction shall be performed in accordance with standard specifications and ordinances of the city of Rockwall Texas and with specifications prepared for Stonebridge Meadows Phase II by Threadgill-Dowdey and Associates Consulting Engineers.
7. Locations of all existing facilities, i.e. pipelines, cables, electricity, telephone, etc., shall be verified in the field by the contractor. It shall be the responsibility of the contractor to notify the proper agencies prior to construction.
8. Where proposed sanitary sewer crosses within 9' of water line, sanitary sewer will be constructed of cast iron or P.V.C. with rubber gasket joints.



- NOTES:
1. All construction performed shall be in accordance with City of Rockwall ordinances and specifications.
  2. Locations of all existing facilities, i.e. pipelines, cables, electricity, telephone, etc., shall be verified in the field by the contractor. It shall be the responsibility of the contractor to notify the proper agencies prior to construction.



NO. 1265-PLAN PROFILE PLATE A  
"CLEARPRINT PAPER CO."  
MADE IN U.S.A.

BENCH MARK: "D" cut on conc. curb,  
11.5' South of the Southeast  
corner of Lot #17  
Elev. 551.51'

**AS BUILT**

**WATER & SEWER**

**STONEBRIDGE MEADOWS**

**PHASE TWO**

**ROCKWALL CO., TEXAS**

**THREADGILL - DOWDEY and ASSOCIATES**  
CONSULTING ENGINEERS DALLAS, TEXAS

DESIGN	DRAWN	CHECKED	DATE	SCALE	JOB	SHEET
ARW	RE	JCH	1-76	1"=40'	459E	1