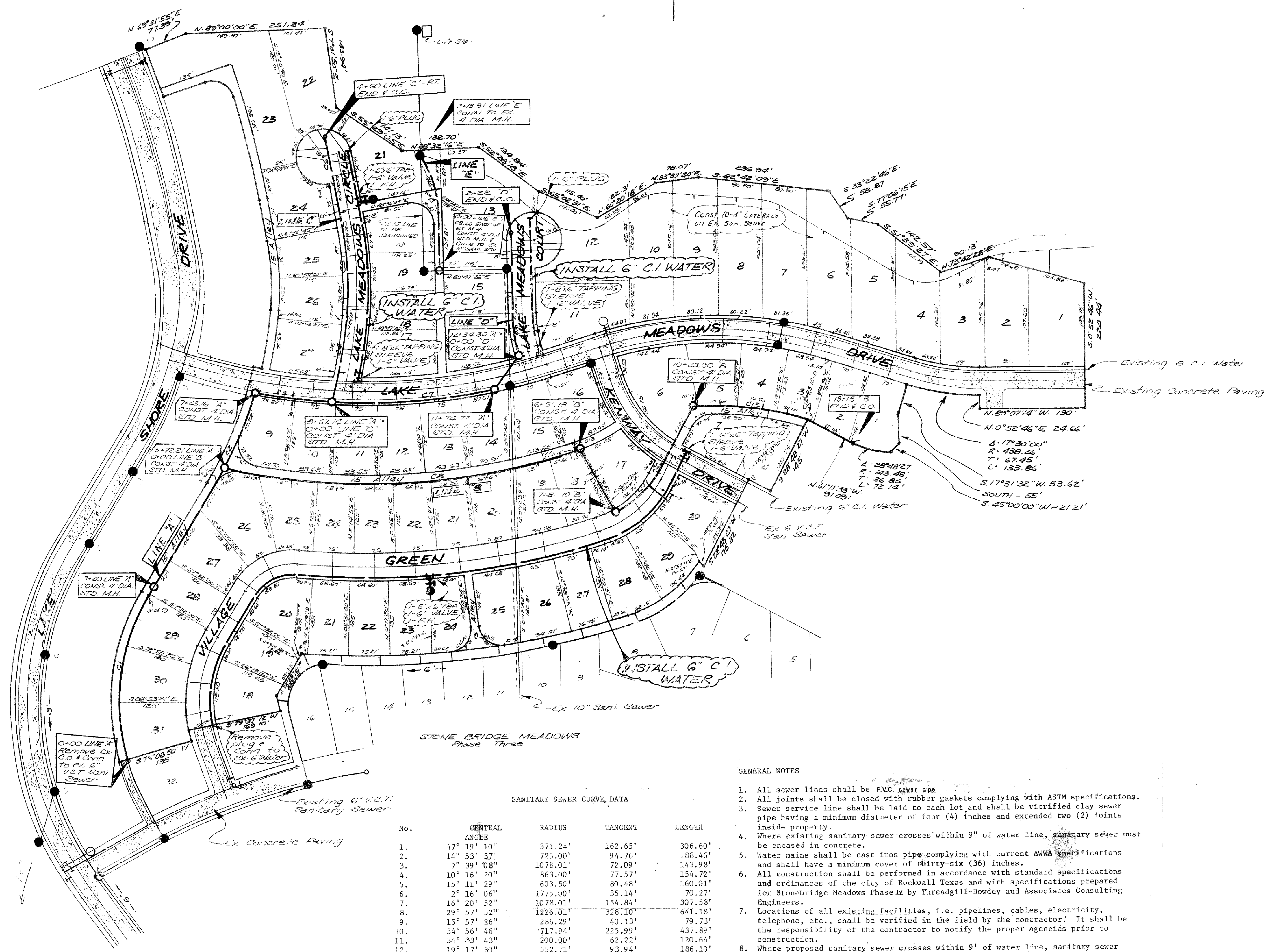
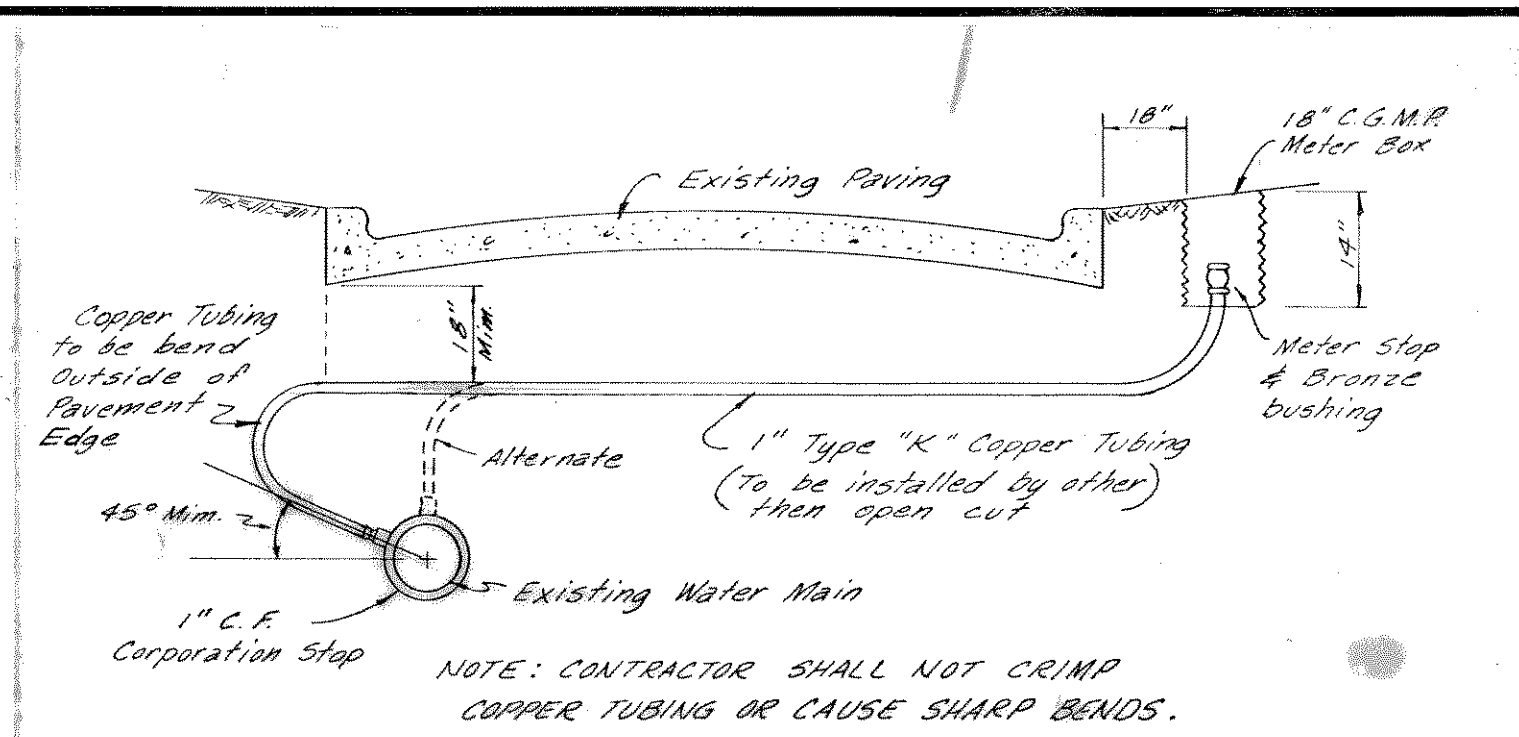


| BY | DATE | CHECKED | DESCRIPTION OF REVISION |
|-----|---------|---------|---|
| JH9 | 2-19-79 | JGB | Lot 6, Blk. H - moved service from rear to front. |
| | | | |
| | | | |
| | | | |

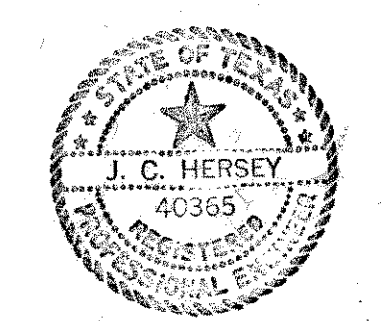


| ESTIMATES | | |
|-----------------------------|----------|---------|
| Material | Quantity | Unit |
| 6" V.C.P. | 3445 | L.F. |
| 4" M.H. | 10 | EA. |
| 6" C.O. | 3 | " |
| Services | 59 | " |
| Gravel Embedment | 1417 | Sq. Yd. |
| 6" C.I. Water | 1807 | L.F. |
| F.H. | 2 | EA. |
| 6" Valve | 5 | EA. |
| 6" Plug | 3 | " |
| 6" x 6" Tee | 2 | " |
| 6" x 6" Tapping Sleeve | 1 | " |
| 8" x 6" Tapping Sleeve | 2 | " |
| Std. Water Service | 58 | EA. |
| Water Ser. Thru Exist. Pkt. | 13 | " |

SANITARY SEWER CURVE DATA

| No. | CENTRAL ANGLE | RADIUS | TANGENT | LENGTH |
|-----|---------------|----------|---------|---------|
| 1. | 47° 19' 10" | 371.24' | 162.65' | 306.60' |
| 2. | 14° 53' 37" | 725.00' | 94.76' | 188.46' |
| 3. | 7° 39' 08" | 1078.01' | 72.09' | 143.98' |
| 4. | 10° 16' 20" | 863.00' | 77.57' | 154.72' |
| 5. | 15° 11' 29" | 603.50' | 80.48' | 160.01' |
| 6. | 2° 16' 06" | 1775.00' | 35.14' | 70.27' |
| 7. | 16° 20' 52" | 1078.01' | 154.84' | 307.58' |
| 8. | 29° 57' 52" | 1226.01' | 328.10' | 641.18' |
| 9. | 15° 57' 26" | 286.29' | 40.13' | 79.73' |
| 10. | 34° 56' 46" | 717.94' | 225.99' | 437.89' |
| 11. | 34° 33' 43" | 200.00' | 62.22' | 120.64' |
| 12. | 19° 17' 30" | 552.71' | 93.94' | 186.10' |
| 13. | 3° 47' 31" | 319.79' | 5.00' | 10.00' |
| 14. | 3° 14' 45" | 200.00' | 55.93' | 109.07' |

- GENERAL NOTES
- All sewer lines shall be PVC sewer pipe.
 - All joints shall be closed with rubber gaskets complying with ASTM specifications.
 - Sewer service line shall be laid to each lot and shall be vitrified clay sewer pipe having a minimum diameter of four (4) inches and extended two (2) joints inside property.
 - Where existing sanitary sewer crosses within 9" of water line, sanitary sewer must be encased in concrete.
 - Water mains shall be cast iron pipe complying with current ANWA specifications and shall have a minimum cover of thirty-six (36) inches.
 - All construction shall be performed in accordance with standard specifications and ordinances of the city of Rockwall Texas and with specifications prepared for Stonebridge Meadows Phase IV by Threadgill-Dowdey and Associates Consulting Engineers.
 - Locations of all existing facilities, i.e. pipelines, cables, electricity, telephone, etc., shall be verified in the field by the contractor. It shall be the responsibility of the contractor to notify the proper agencies prior to construction.
 - Where proposed sanitary sewer crosses within 9" of water line, sanitary sewer will be constructed of cast iron or P.V.C. with rubber gasket joints.



WATER & SANI. SEWER PLANS
STONEBRIDGE MEADOWS
 PHASE FOUR
 ROCKWALL COUNTY, TEXAS
 THREADGILL DOWDEY and ASSOCIATES
 CONSULTING ENGINEERS DALLAS, TEXAS

| DESIGN | DRAWN | CHECKED | DATE | SCALE | JOB | SHEET |
|--------|-------|---------|-------|---------|-------|-------|
| JCH | HTM | JCH | 10-78 | 1"=100' | 506-E | 1/2 |

Rev. 1/25/79 Added Sewer Services to Lot B, Blk. H. J.G.B.
 Rev. 10/20/78 J.H.S.