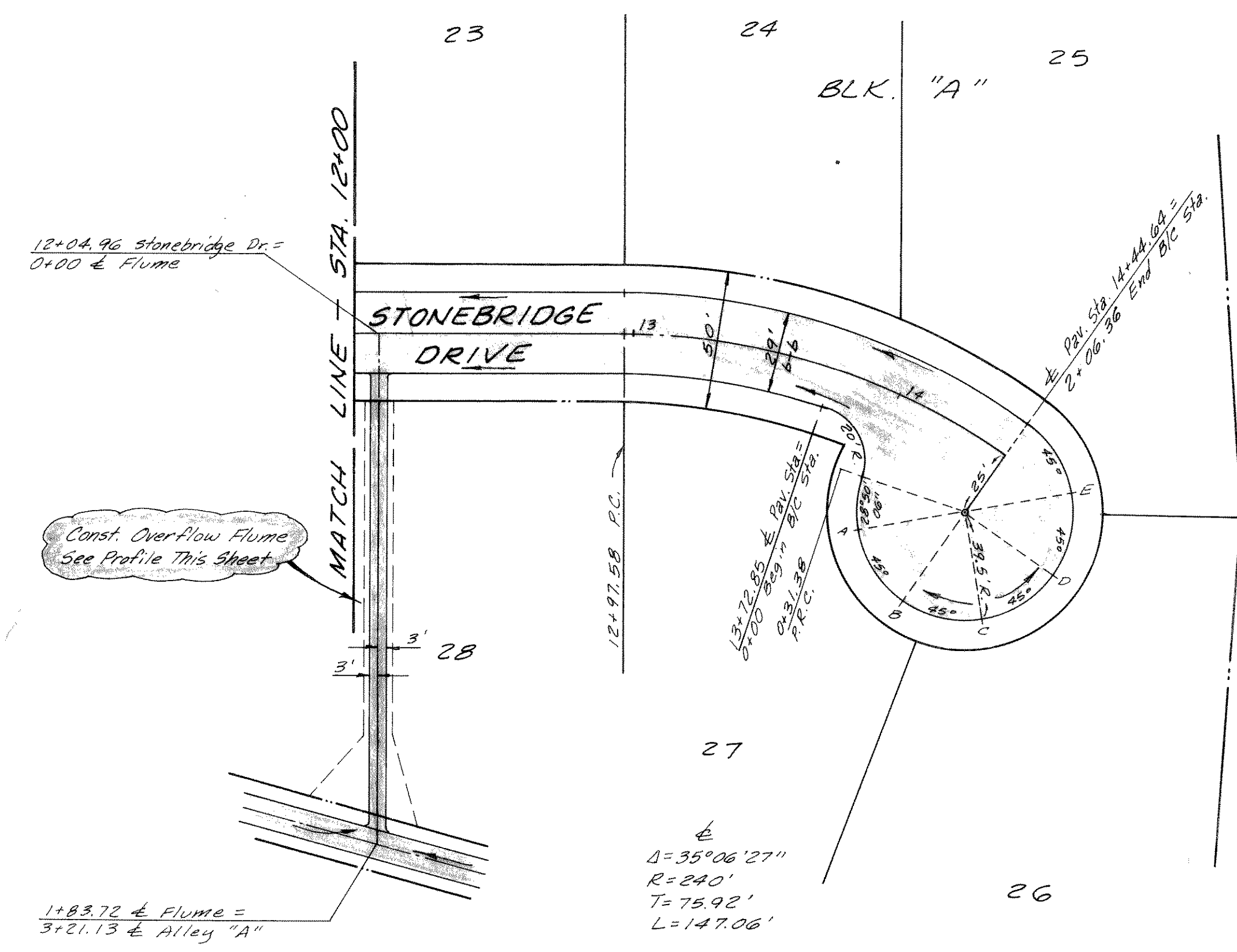
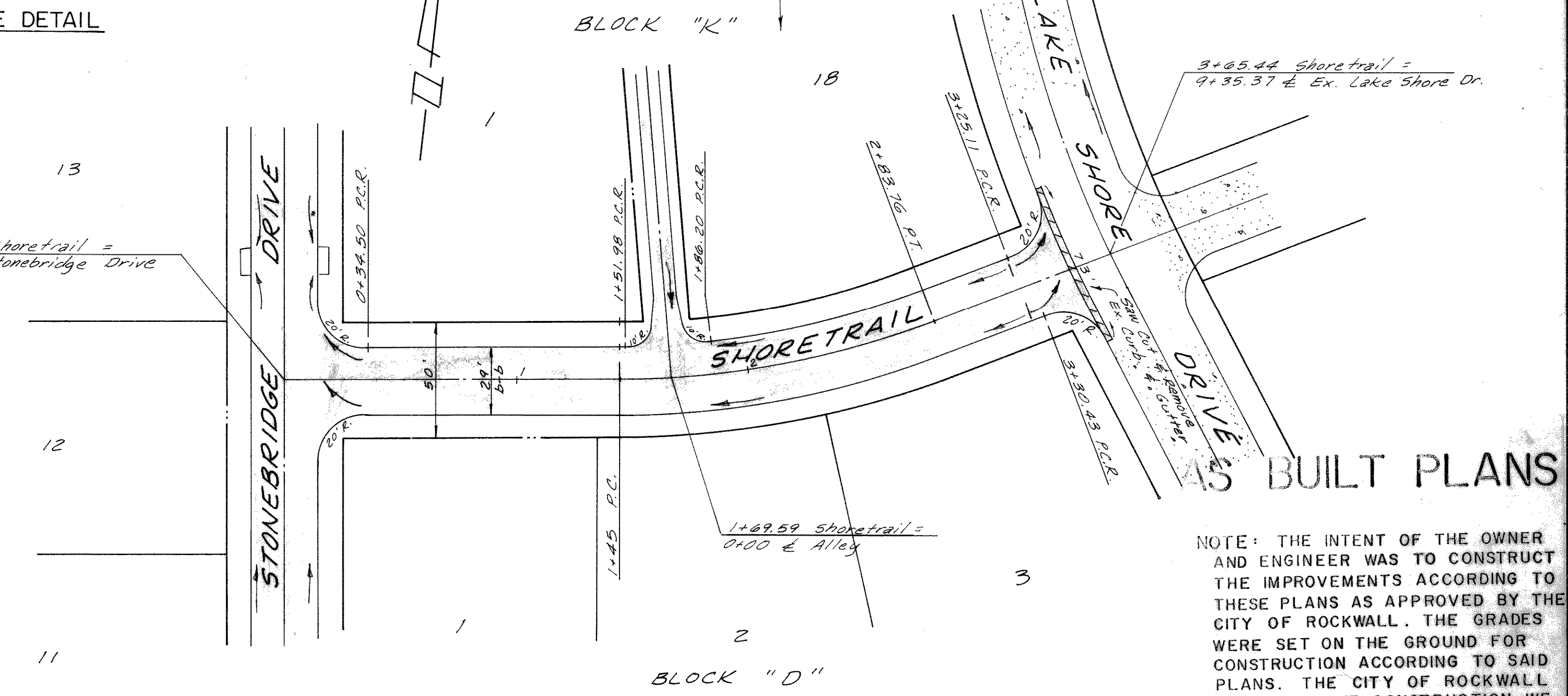


CONCRETE FLUME DETAIL

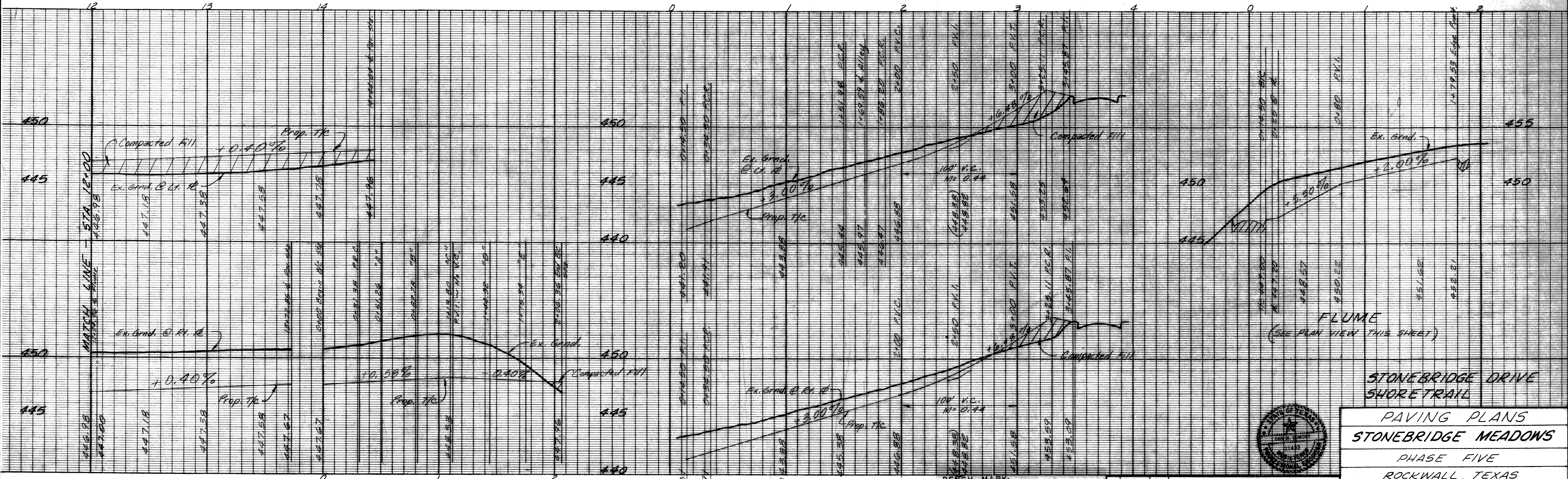


STATE HWY. NO. 66



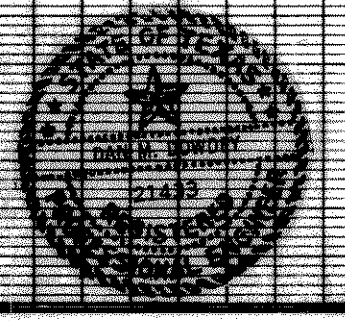
NOTE: THE INTENT OF THE OWNER AND ENGINEER WAS TO CONSTRUCT THE IMPROVEMENTS ACCORDING TO THESE PLANS AS APPROVED BY THE CITY OF ROCKWALL. THE GRADES WERE SET ON THE GROUND FOR CONSTRUCTION ACCORDING TO SAID PLANS. THE CITY OF ROCKWALL INSPECTED THE CONSTRUCTION. WE ARE NOT AWARE OF ANY CHANGES OR REVISIONS TO THESE PLANS DURING CONSTRUCTION, EXCEPT AS SHOWN.

JULY 10, 1981



BENCH MARK:
TOP OF SOUTH FLANGE BOLT OF FIRE HYDRANT ON EAST SIDE OF LAKE SHORE DRIVE, 200' NORTH OF THE NORTH PROPERTY LINE OF STONEBRIDGE MEADOWS I.
ELEV. 454.36'

NO.	DATE	BY	REVISION
1	10-20-80	RE	Lowered Grades - Stonebridge Dr.



STONEBRIDGE DRIVE SHORETRAIL

PAVING PLANS
STONEBRIDGE MEADOWS
PHASE FIVE
ROCKWALL, TEXAS

THREADGILL-DOWDEY and ASSOCIATES
CONSULTING ENGINEERS DALLAS, TEXAS

DESIGN	DRAWN	CHECKED	DATE	SCALE	JOB	SHEET
J.G.B.	R.E.	D.M.D.	9-80	1/4"=1'-0"	507-E	2/6