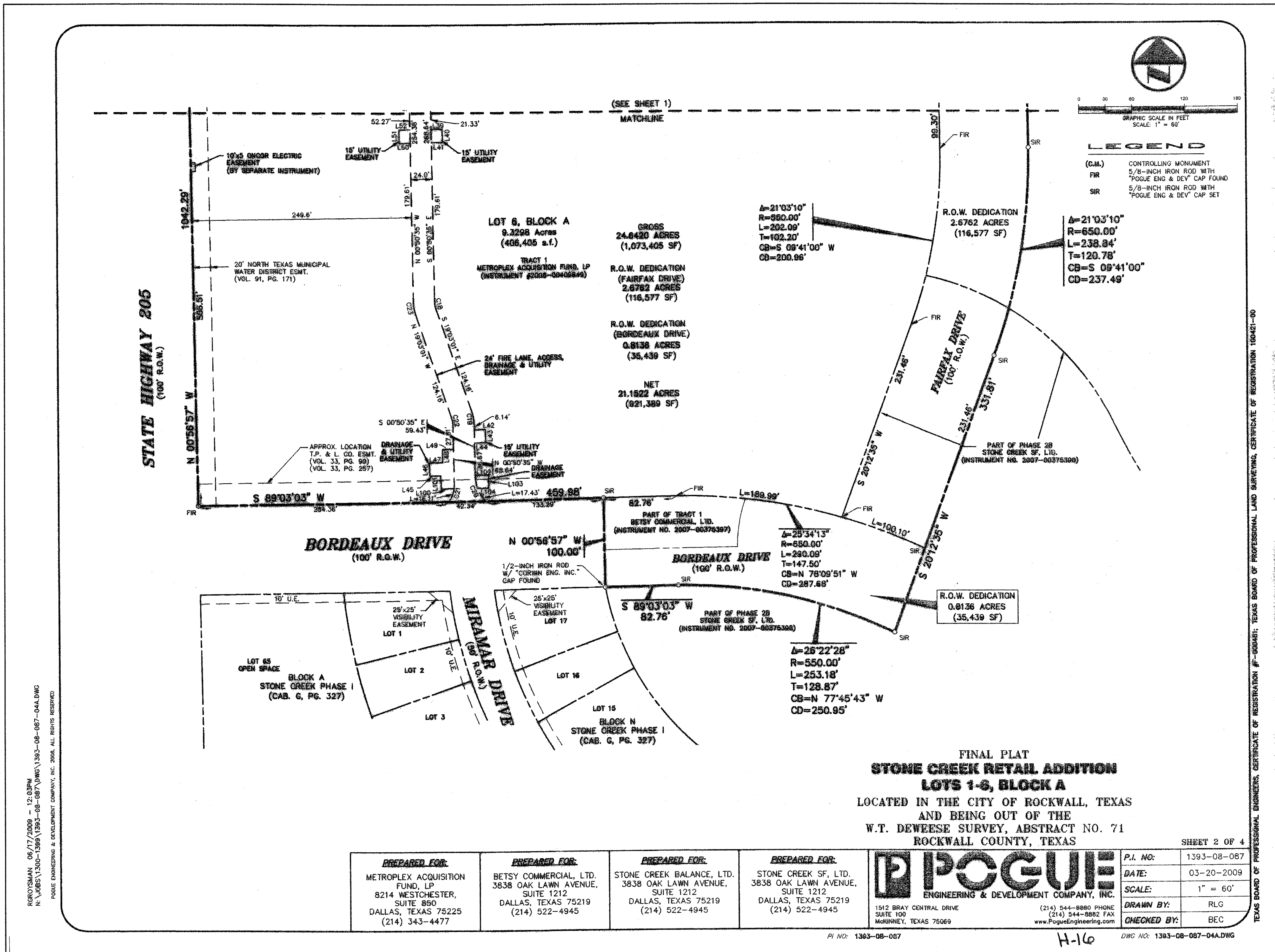


LEGEND

(C.M.) CONTROLLING MONUMENT
 FIR 5/8-INCH IRON ROD WITH "FOGUE ENG & DEV" CAP FOUND
 SIR 5/8-INCH IRON ROD WITH "FOGUE ENG & DEV" CAP SET



**FINAL PLAT
 STONE CREEK RETAIL ADDITION
 LOTS 1-6, BLOCK A**
 LOCATED IN THE CITY OF ROCKWALL, TEXAS
 AND BEING OUT OF THE
 W.T. DEWEESE SURVEY, ABSTRACT NO. 71
 ROCKWALL COUNTY, TEXAS

SHEET 2 OF 4

PREPARED FOR: METROPLEX ACQUISITION FUND, LP 8214 WESTCHESTER, SUITE 850 DALLAS, TEXAS 75225 (214) 343-4477	PREPARED FOR: BETSY COMMERCIAL, LTD. 3838 OAK LAWN AVENUE, SUITE 1212 DALLAS, TEXAS 75219 (214) 522-4945	PREPARED FOR: STONE CREEK BALANCE, LTD. 3838 OAK LAWN AVENUE, SUITE 1212 DALLAS, TEXAS 75219 (214) 522-4945	PREPARED FOR: STONE CREEK SF, LTD. 3838 OAK LAWN AVENUE, SUITE 1212 DALLAS, TEXAS 75219 (214) 522-4945	POGUE ENGINEERING & DEVELOPMENT COMPANY, INC. 1512 BRAY CENTRAL DRIVE, SUITE 100 MCKINNEY, TEXAS 75069 (214) 544-8880 PHONE (214) 544-8882 FAX www.PogueEngineering.com	P.I. NO.: 1393-08-087 DATE: 03-20-2009 SCALE: 1" = 60' DRAWN BY: RLG CHECKED BY: BEC
--	---	--	---	--	---

RRODTSMAN 06/17/2009 - 12:03PM
 N:\JOBS\1300-1393\1393-08-087\DWG\1393-08-087-04A.DWG
 POGUE ENGINEERING & DEVELOPMENT COMPANY, INC. 2009. ALL RIGHTS RESERVED

PI NO: 1393-08-087

H-16

DWG NO: 1393-08-087-04A.DWG

WILLIAMS 04/14/2010 - 4:23PM
 N:\JOBS\1300-1393\1393-08-087\DWG\1393-08-087-07A.DWG

TEXAS BOARD OF PROFESSIONAL ENGINEERS, CERTIFICATE OF REGISTRATION # 000481; TEXAS BOARD OF PROFESSIONAL LAND SURVEYING, CERTIFICATE OF REGISTRATION 100421-00