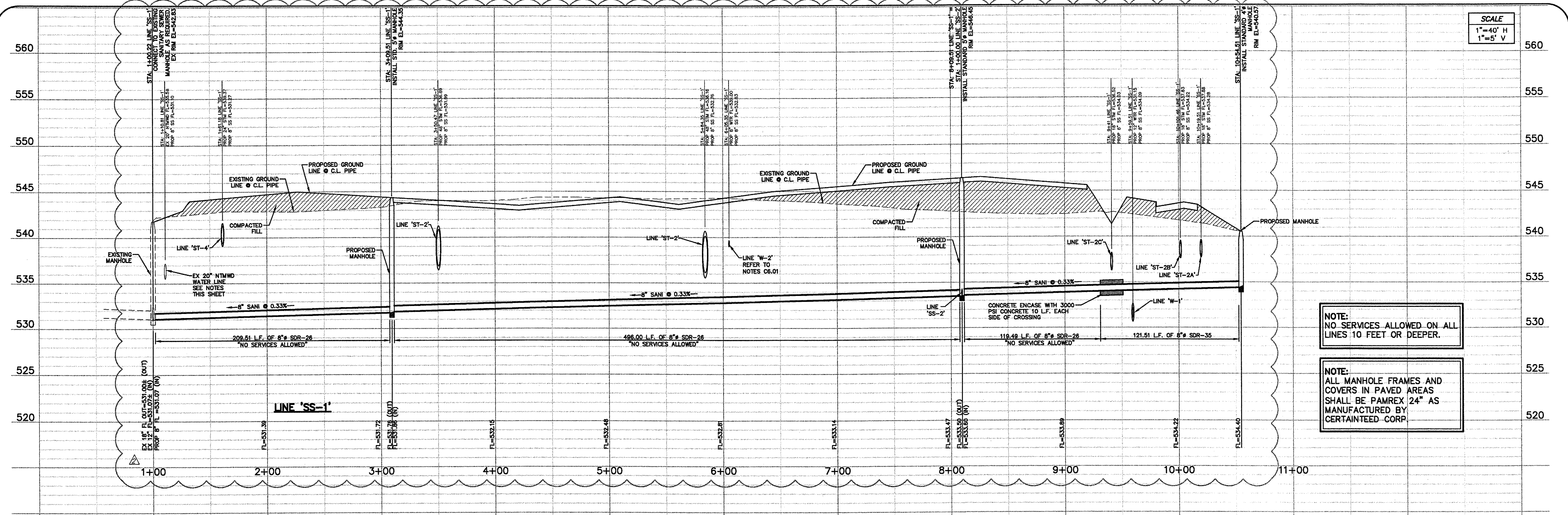


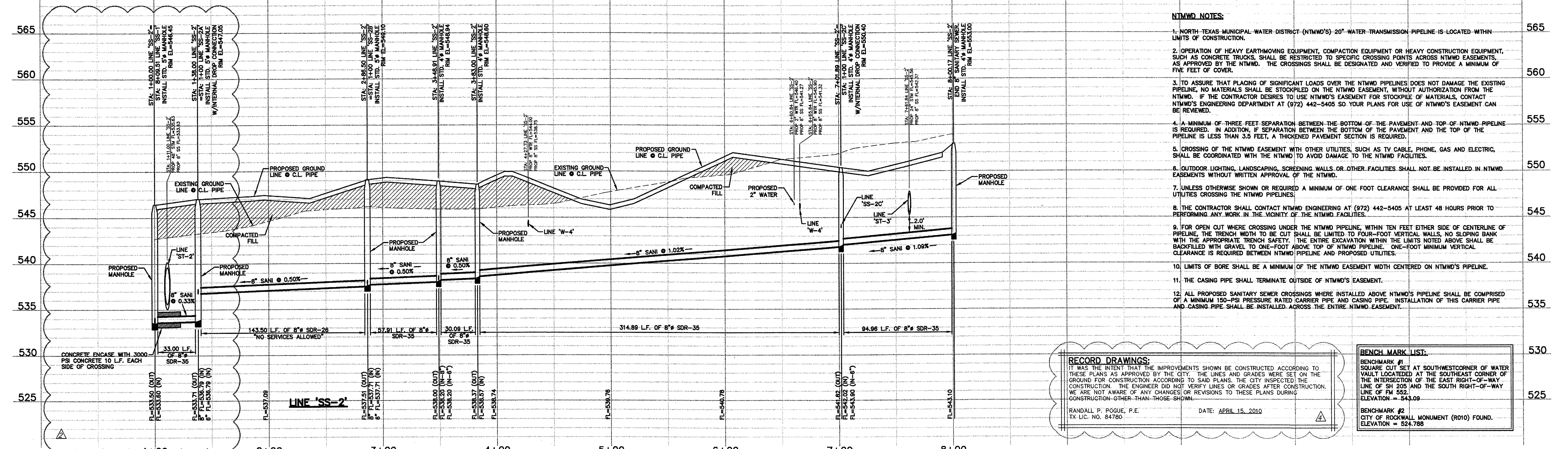
WILLIAMS 04/28/2010 - 4:07PM
 N:\WORK\1393-08-07\DWG\1393-08-07-07A.DWG
 © POGUE ENGINEERING & DEVELOPMENT COMPANY, INC. 2008. ALL RIGHTS RESERVED. THE ENGINEERING DESIGN, DETAIL AND ENGINEERING DRAWINGS FOR THIS PROJECT AND/OR OVERALL PROJECT ARE THE LEGAL PROPERTY OF POGUE ENGINEERING & DEVELOPMENT COMPANY, INC. THEIR USE FOR REPRODUCTION, CONSTRUCTION, OR DISTRIBUTION IS PROHIBITED UNLESS AUTHORIZED IN WRITING BY POGUE ENGINEERING & DEVELOPMENT COMPANY, INC.



SCALE
 1"=40' H
 1"=5' V

NOTE:
 NO SERVICES ALLOWED ON ALL
 LINES 10 FEET OR DEEPER.

NOTE:
 ALL MANHOLE FRAMES AND
 COVERS IN PAVED AREAS
 SHALL BE PAMREX 24" AS
 MANUFACTURED BY
 CERTAINTED CORP



- NTMWD NOTES:**
1. NORTH TEXAS MUNICIPAL WATER DISTRICT (NTMWD'S) 20" WATER TRANSMISSION PIPELINE IS LOCATED WITHIN LIMITS OF CONSTRUCTION.
 2. OPERATION OF HEAVY EARTHMOVING EQUIPMENT, COMPACTION EQUIPMENT OR HEAVY CONSTRUCTION EQUIPMENT, SUCH AS CONCRETE TRUCKS, SHALL BE RESTRICTED TO SPECIFIC CROSSING POINTS ACROSS NTMWD EASEMENTS, AS APPROVED BY THE NTMWD. THE CROSSINGS SHALL BE DESIGNATED AND VERIFIED TO PROVIDE A MINIMUM OF FIVE FEET OF COVER.
 3. TO ASSURE THAT PLACING OF SIGNIFICANT LOADS OVER THE NTMWD PIPELINES DOES NOT DAMAGE THE EXISTING PIPELINE, NO MATERIALS SHALL BE STOCKPILED ON THE NTMWD EASEMENT, WITHOUT AUTHORIZATION FROM THE NTMWD. IF THE CONTRACTOR DESIRES TO USE NTMWD'S EASEMENT FOR STOCKPILE OF MATERIALS, CONTACT NTMWD'S ENGINEERING DEPARTMENT AT (972) 442-5405 SO YOUR PLANS FOR USE OF NTMWD'S EASEMENT CAN BE REVIEWED.
 4. A MINIMUM OF THREE FEET SEPARATION BETWEEN THE BOTTOM OF THE PAVEMENT AND TOP OF NTMWD PIPELINE IS REQUIRED. IN ADDITION, IF SEPARATION BETWEEN THE BOTTOM OF THE PAVEMENT AND THE TOP OF THE PIPELINE IS LESS THAN 3.5 FEET, A THICKENED PAVEMENT SECTION IS REQUIRED.
 5. CROSSING OF THE NTMWD EASEMENT WITH OTHER UTILITIES, SUCH AS TV CABLE, PHONE, GAS AND ELECTRIC, SHALL BE COORDINATED WITH THE NTMWD TO AVOID DAMAGE TO THE NTMWD FACILITIES.
 6. OUTDOOR LIGHTING, LANDSCAPING, SCREENING WALLS OR OTHER FACILITIES SHALL NOT BE INSTALLED IN NTMWD EASEMENTS WITHOUT WRITTEN APPROVAL OF THE NTMWD.
 7. UNLESS OTHERWISE SHOWN OR REQUIRED A MINIMUM OF ONE FOOT CLEARANCE SHALL BE PROVIDED FOR ALL UTILITIES CROSSING THE NTMWD PIPELINES.
 8. THE CONTRACTOR SHALL CONTACT NTMWD ENGINEERING AT (972) 442-5405 AT LEAST 48 HOURS PRIOR TO PERFORMING ANY WORK IN THE VICINITY OF THE NTMWD FACILITIES.
 9. FOR OPEN CUT WHERE CROSSING UNDER THE NTMWD PIPELINE, WITHIN TEN FEET EITHER SIDE OF CENTERLINE OF PIPELINE, THE TRENCH WIDTH TO BE CUT SHALL BE LIMITED TO FOUR-FOOT VERTICAL WALLS AND SLOPING BANK WITH THE APPROPRIATE TRENCH SAFETY. THE ENTIRE EXCAVATION WITHIN THE LIMITS NOTED ABOVE SHALL BE BACKFILLED WITH GRAVEL TO ONE-FOOT ABOVE TOP OF NTMWD PIPELINE. ONE-FOOT MINIMUM VERTICAL CLEARANCE IS REQUIRED BETWEEN NTMWD PIPELINE AND PROPOSED UTILITIES.
 10. LIMITS OF BORE SHALL BE A MINIMUM OF THE NTMWD EASEMENT WIDTH CENTERED ON NTMWD'S PIPELINE.
 11. THE CASING PIPE SHALL TERMINATE OUTSIDE OF NTMWD'S EASEMENT.
 12. ALL PROPOSED SANITARY SEWER CARRIERS WHERE INSTALLED ABOVE NTMWD'S PIPELINE SHALL BE COMPRISED OF A MINIMUM 150-PSI PRESSURE RATED CARRIER PIPE AND CASING PIPE. INSTALLATION OF THIS CARRIER PIPE AND CASING PIPE SHALL BE INSTALLED ACROSS THE ENTIRE NTMWD EASEMENT.

RECORD DRAWINGS:
 IT WAS THE INTENT THAT THE IMPROVEMENTS SHOWN BE CONSTRUCTED ACCORDING TO THESE PLANS AS APPROVED BY THE CITY. THE LINES AND GRADES WERE SET ON THE GROUND FOR CONSTRUCTION ACCORDING TO SAID PLANS. THE CITY INSPECTED THE CONSTRUCTION. THE ENGINEER DID NOT VERIFY LINES OR GRADES AFTER CONSTRUCTION. WE ARE NOT AWARE OF ANY CHANGES OR REVISIONS TO THESE PLANS DURING CONSTRUCTION OTHER THAN THOSE SHOWN.

RANDALL P. POGUE, P.E.
 TX LIC. NO. 84780

DATE: APRIL 15, 2010

BENCH MARK LIST:
 BENCHMARK #1
 SQUARE CUT SET AT SOUTHWEST CORNER OF WATER VAULT LOCATED AT THE SOUTHEAST CORNER OF THE INTERSECTION OF THE EAST RIGHT-OF-WAY LINE OF SH 205 AND THE SOUTH RIGHT-OF-WAY LINE OF FM 552.
 ELEVATION = 543.09

BENCHMARK #2
 CITY OF ROCKWALL MONUMENT (R010) FOUND.
 ELEVATION = 524.788

NO.	DATE	REVISION / DESCRIPTION
04-15-10		RECORD DRAWINGS
02-24-10		ADDED RIGHT TURN LANE ON S.H. 205
07-17-09		SANITARY SEWER & ADA ROUTE REVISIONS
06-19-09		TXDOT COMMENTS

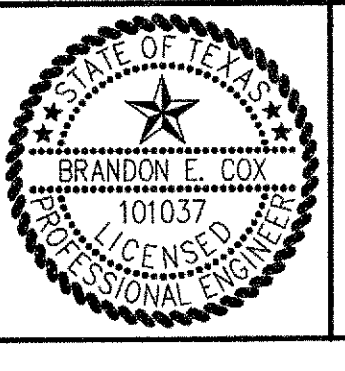
DESIGN	DRAWN	DATE	SCALE	NOTES
BEC	WTW	05-21-09	AS SHOWN	-

OWNER
 METROPLEX ACQUISITION FUND, LP
 8214 WESTCHESTER, SUITE 850
 DALLAS, TEXAS 75225
 MR. GREY STOGNER
 (214) 343-4477 PHONE
 (214) 340-2029 FAX

DEVELOPER
 CRESTVIEW REAL ESTATE, L.L.C.
 8214 WESTCHESTER, SUITE 850
 DALLAS, TEXAS 75225
 MR. GREY STOGNER
 (214) 343-4477 PHONE
 (214) 340-2029 FAX

THE SEAL APPEARING ON THIS DOCUMENT WAS AUTHORIZED BY BRANDON E. COX, P.E. 10/01/01 ON 05-21-09 ALTERATION OF A SEALED DOCUMENT WITHOUT PROPER NOTIFICATION TO THE RESPONSIBLE ENGINEER IS AN OFFENSE UNDER THE TEXAS ENGINEERING PRACTICE ACT.

Brandon E. Cox 05-21-09



POGUE
 ENGINEERING & DEVELOPMENT COMPANY, INC.

1512 BRAY CENTRAL DRIVE
 SUITE 100
 MCKINNEY, TEXAS 75069

(214) 544-8880 PHONE
 (214) 544-8882 FAX
 www.PogueEngineering.com

SANITARY SEWER PROFILES
 STONE CREEK RETAIL
 BLOCK A, LOTS 1-6, STONE CREEK RETAIL ADDITION
 W.T. DEWEES SURVEY, ABSTRACT NO. 71
 CITY OF ROCKWALL, TEXAS

SHEET NO. **C6.03**

FIG. NO. 1393-08-087
 DWG. NO. 1393-08-087-07A.DWG

STONE CREEK RETAIL - ROCKWALL
 TEXAS BOARD OF PROFESSIONAL ENGINEERS, CERTIFICATE OF REGISTRATION # 004461
 TEXAS BOARD OF PROFESSIONAL LAND SURVEYING, CERTIFICATE OF REGISTRATION 100421-00