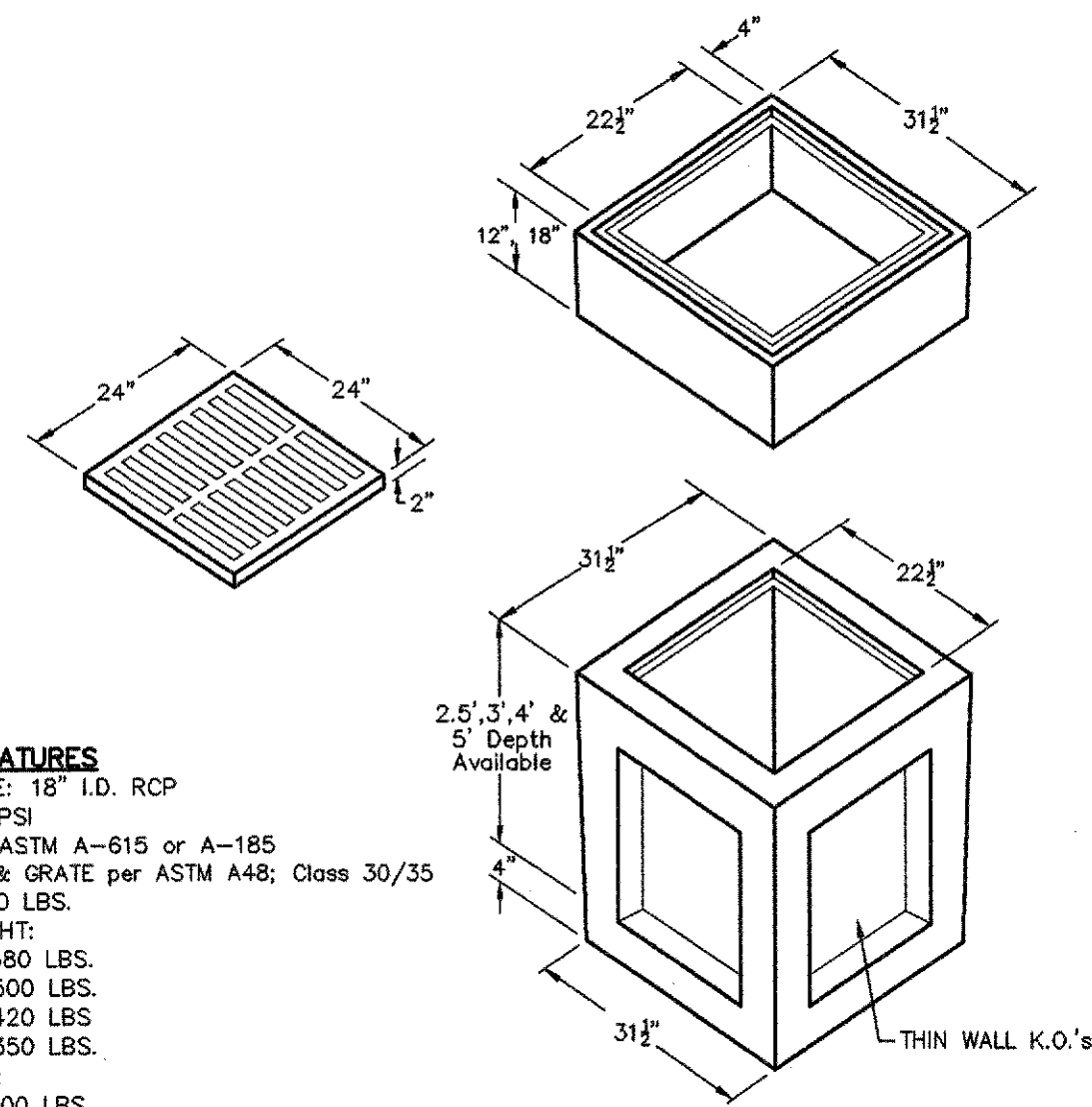


T:\11\1300-1399\1393-08-087-07A.DWG
 N:\1300-1399\1393-08-087-07A.DWG
 WILLIAMS 04/29/2010 - 4:05PM
 © POGUE ENGINEERING & DEVELOPMENT COMPANY, INC. 2009. ALL RIGHTS RESERVED. THE ENGINEERING DESIGN, DETAIL AND ENGINEERING DRAWINGS FOR THIS PROJECT AND/OR OVERALL PROJECT ARE THE LEGAL PROPERTY OF POGUE ENGINEERING & DEVELOPMENT COMPANY, INC. THEIR USE FOR REPRODUCTION, CONSTRUCTION, OR DISTRIBUTION IS PROHIBITED UNLESS AUTHORIZED IN WRITING BY POGUE ENGINEERING & DEVELOPMENT COMPANY, INC.

STONE CREEK RETAIL - ROCKWALL
 TEXAS BOARD OF PROFESSIONAL ENGINEERS, CERTIFICATE OF REGISTRATION #00481; TEXAS BOARD OF PROFESSIONAL LAND SURVEYING, CERTIFICATE OF REGISTRATION 100421-00

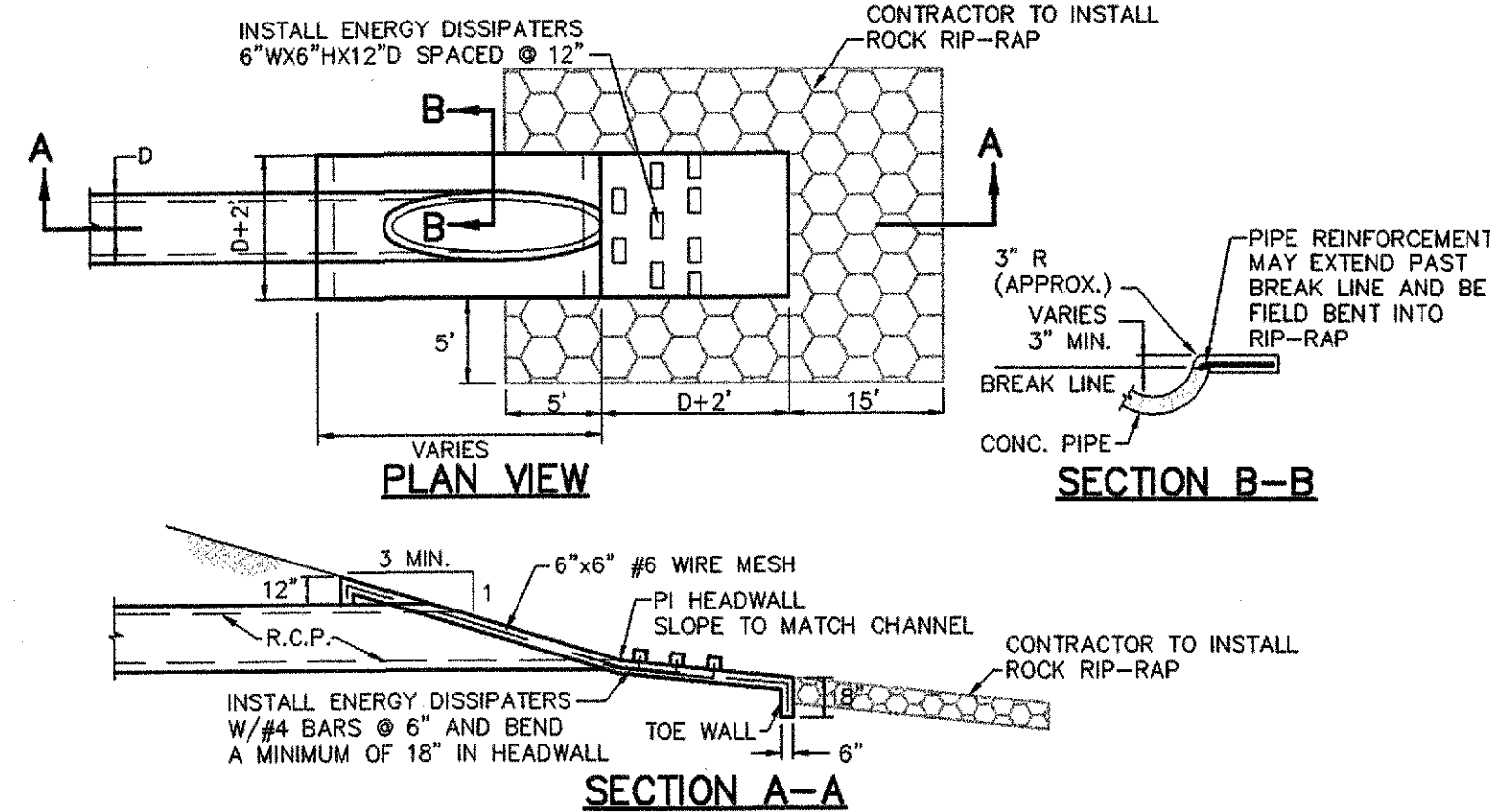


MATERIALS & FEATURES
 MAXIMUM PIPE SIZE: 18" I.D. RCP
 CONCRETE: 5,000 PSI
 REINFORCING: per ASTM A-615 or A-185
 CAST IRON FRAME & GRATE per ASTM A48; Class 30/35
 GRATE WEIGHT: 100 LBS.
 CATCH BASIN WEIGHT:
 2.5'.....1,580 LBS.
 3'.....2,500 LBS.
 4'.....3,420 LBS.
 5'.....4,350 LBS.
 EXTENSION WEIGHT:
 12'.....500 LBS.
 18'.....750 LBS.

**HANSON PIPE & PRECAST
 #24 CATCH BASIN**
 NOT TO SCALE

01
C5.08

OUTLET FROM PIPE HEADWALLS NEED TO HAVE ADEQUATE EROSION PROTECTION
 USE FORMULA $L=0.37 VD$
 L=LENGTH OF APRON (ft), V=OUTLET VELOCITY FLOW (fps), D=DIAMETER OF PIPE (ft)
~~A) 2' - 6" FPS PROTECTION AT THE OUTLET~~
~~B) 3' - 6" FPS GROUDED RIP-RAP (TYPE D, 2.1.6 (B)(1-3)) NCTCOG (TOEWALL)~~
 C) 8' - 11' FPS GROUDED RIP-RAP (TYPE D, 2.1.6 (B)(1-3)) NCTCOG (TOEWALL)
 D) 11' - 18' FPS GROUDED RIP-RAP (TYPE B, 2.1.6 (B)(1-3)) NCTCOG (TOEWALL)
 E) >18' FPS ADEQUATE ENERGY DISSIPATORS

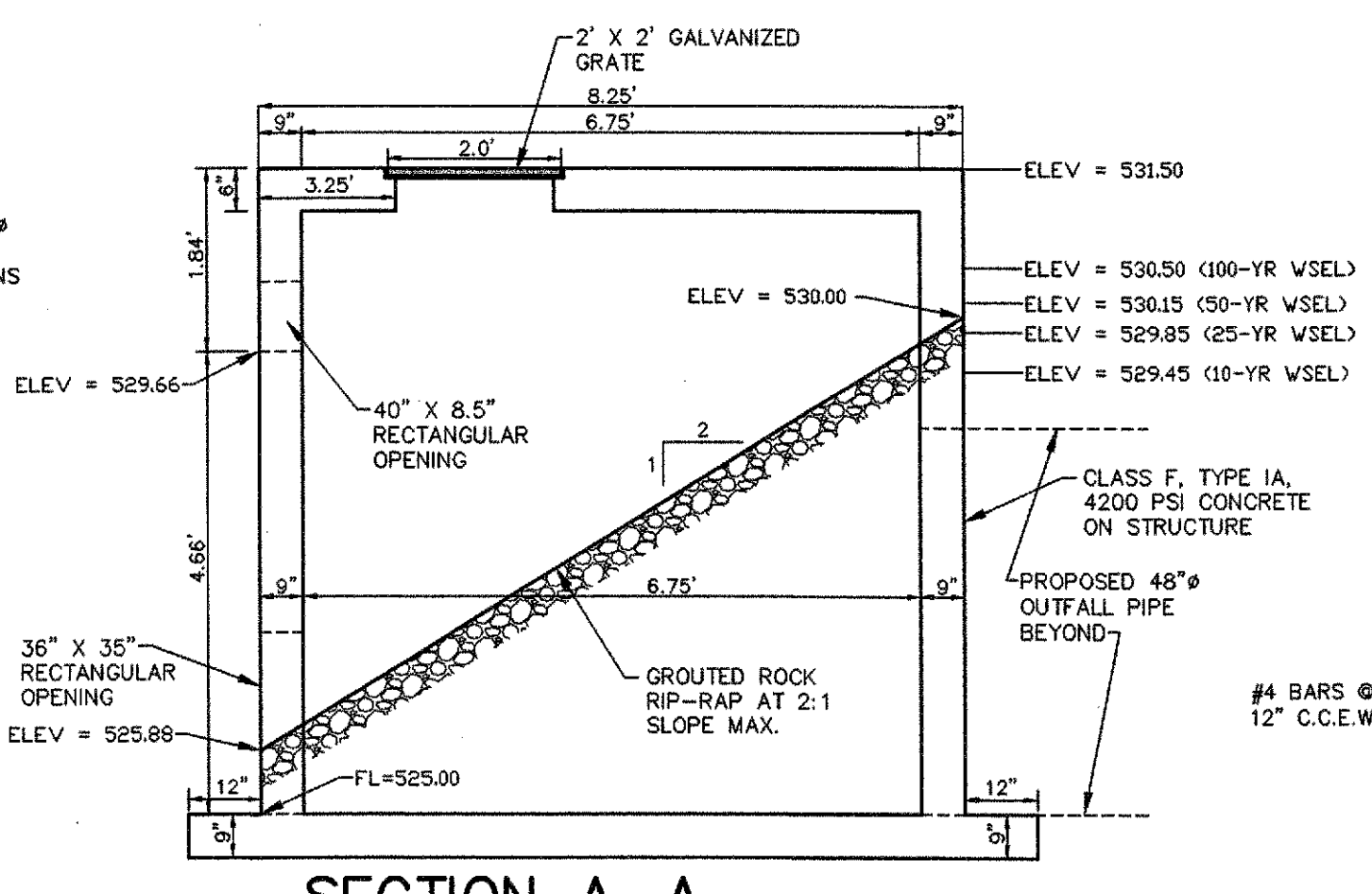
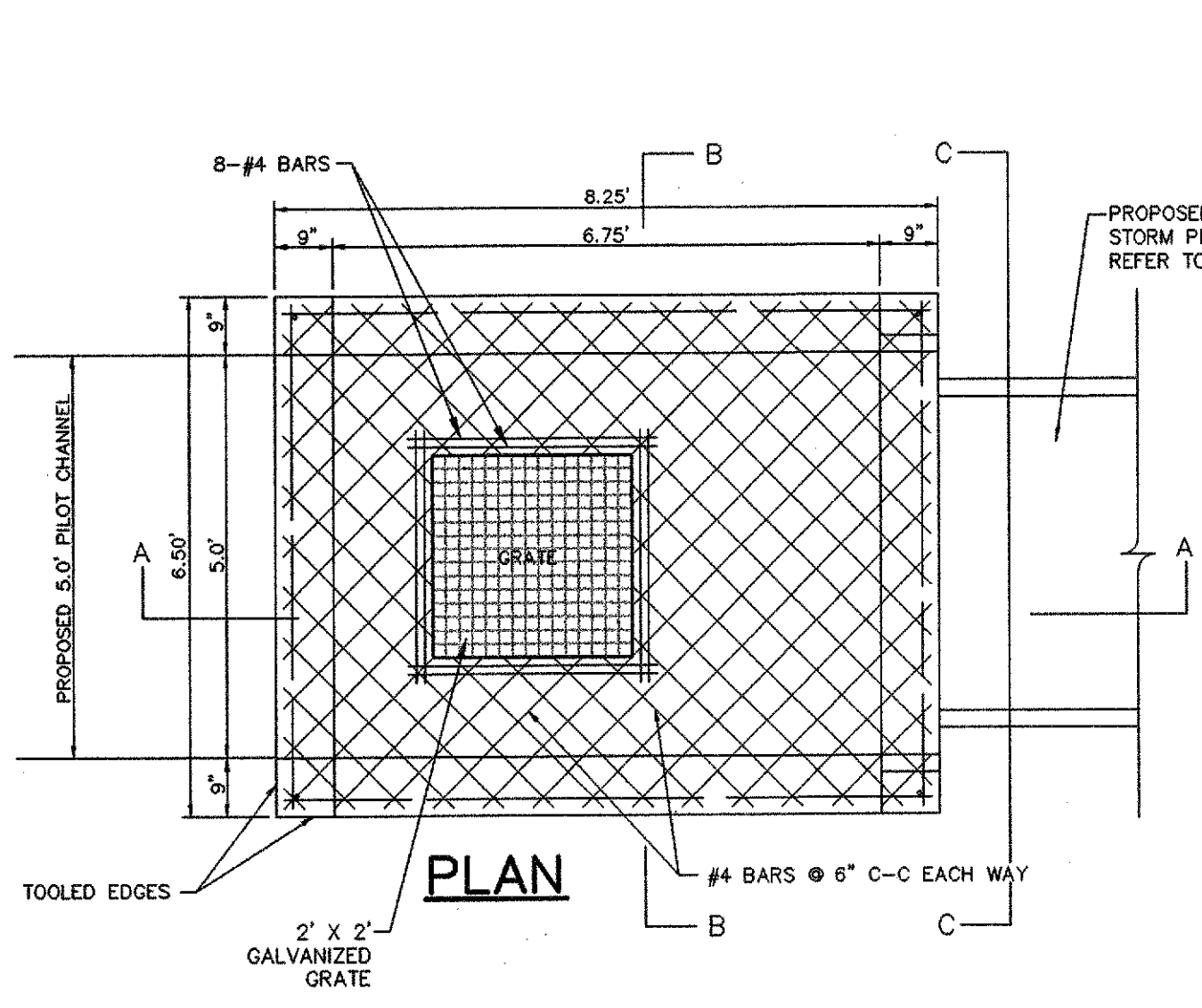


02 TYPE 'C' HEADWALL
 NOT TO SCALE

02
C5.08

GENERAL NOTES:

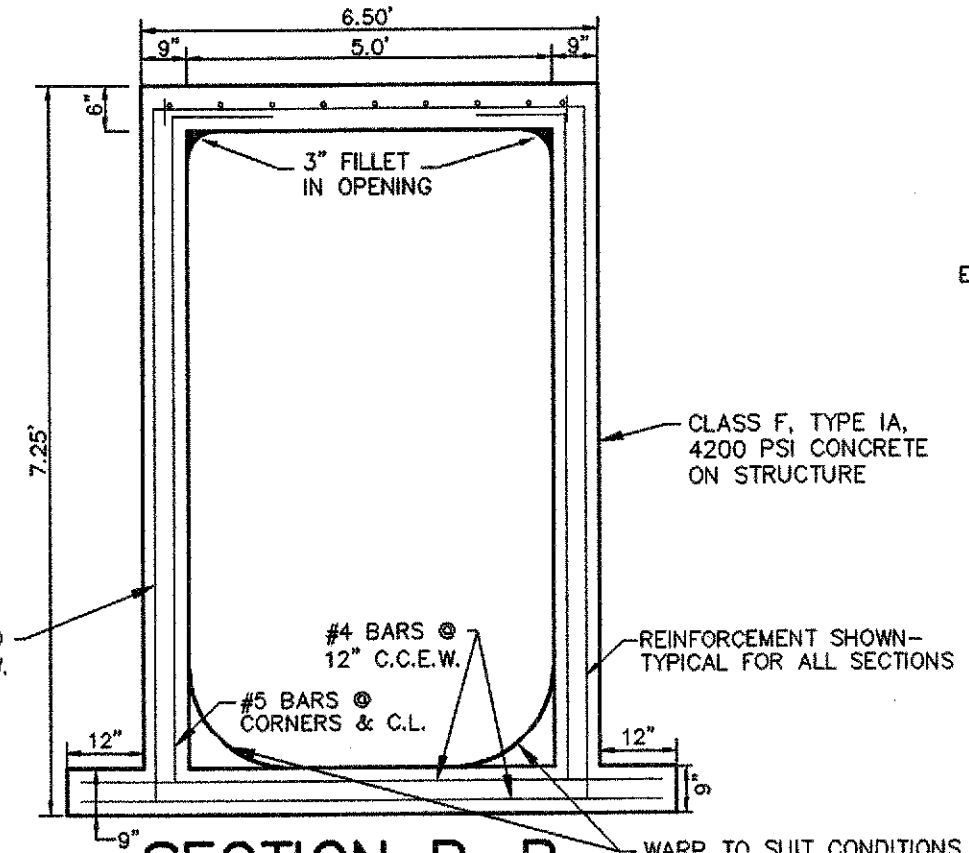
- LAYERS OF REINFORCED STEEL NEAREST THE INTERIOR AND EXTERIOR SURFACES SHALL HAVE A COVER OF 3" TO THE CENTER OF BARS, UNLESS OTHERWISE NOTED.
- EXCAVATION FOR MANHOLE TO BE INCLUDED IN THE UNIT PRICE BID FOR MANHOLE.
- DEPTH OF DROP INLET FROM FINISHED GRADE TO FLOW LINE OF INLET VARIABLE. APPROXIMATE DEPTH WILL BE SHOWN ON PLANS AT LOCATION OF INLET.



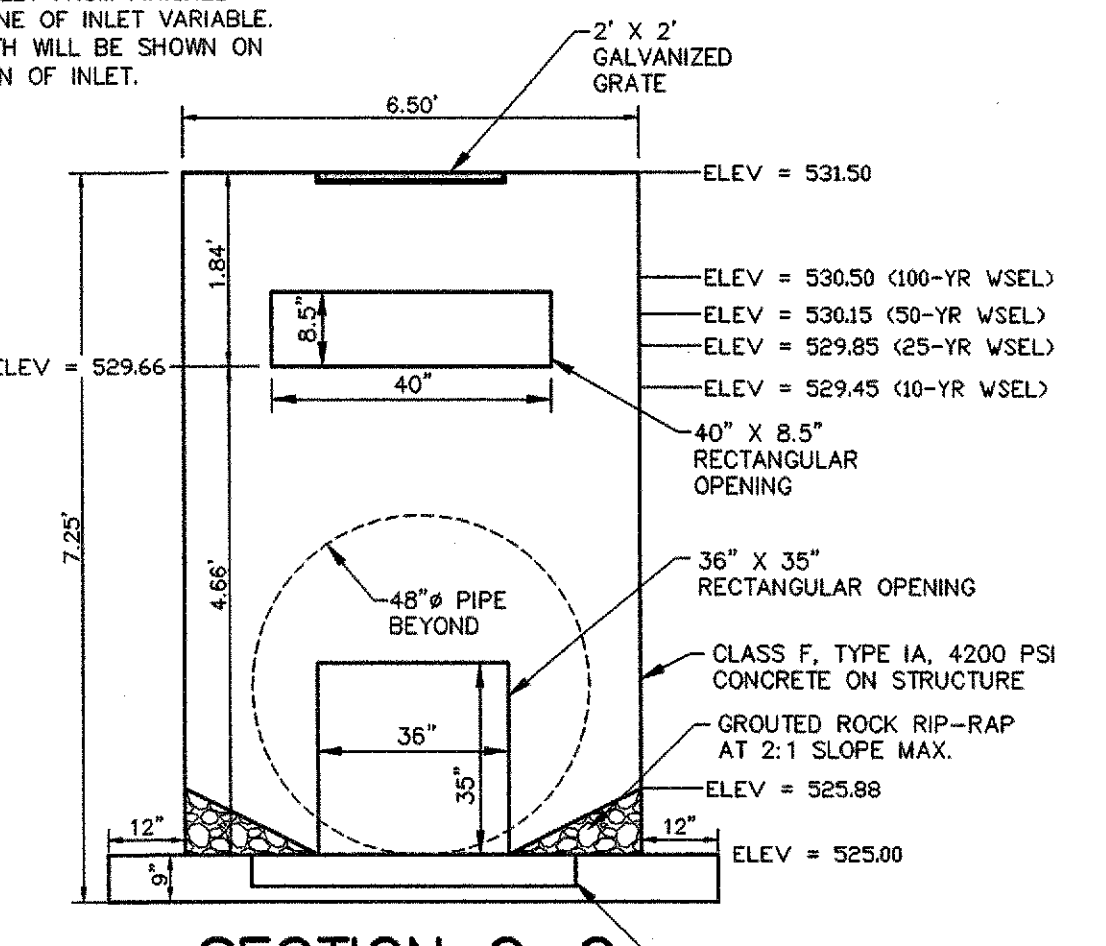
SECTION A-A

03
C5.08

OUTLET STRUCTURE
 NOT TO SCALE



SECTION B-B



SECTION C-C

POND FACE

RECORD DRAWINGS:
 IT WAS THE INTENT THAT THE IMPROVEMENTS SHOWN BE CONSTRUCTED ACCORDING TO THESE PLANS AS APPROVED BY THE CITY. THE LINES AND GRADES WERE SET ON THE GROUND FOR CONSTRUCTION ACCORDING TO SAID PLANS. THE CITY INSPECTED THE CONSTRUCTION. THE ENGINEER DID NOT VERIFY LINES OR GRADES AFTER CONSTRUCTION. WE ARE NOT AWARE OF ANY CHANGES OR REVISIONS TO THESE PLANS DURING CONSTRUCTION OTHER THAN THOSE SHOWN.
 RANDALL P. POGUE, P.E. DATE: APRIL 15, 2010
 TX LIC. NO. 84780

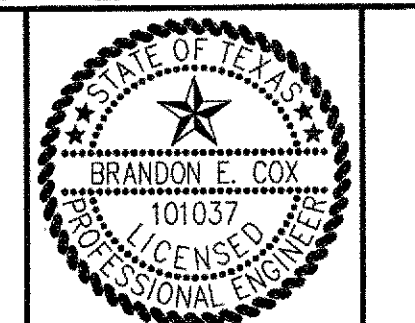
NOTE:
 FOR ALL OTHER STORM DETAILS SEE CITY OF ROCKWALL/STANDARDS & NCTCOG 3rd ADDITION

NO.	DATE	REVISION / DESCRIPTION
04-15-10		RECORD DRAWINGS
02-24-10		ADDED RIGHT TURN LANE ON S.H. 205
07-17-09		SANITARY SEWER & ADA ROUTE REVISIONS
06-19-09		TXDOT COMMENTS

OWNER
 METROPLEX ACQUISITION FUND, LP
 8214 WESTCHESTER, SUITE 850
 DALLAS, TEXAS 75225
 MR. GREY STOGNER
 (214) 343-4477 PHONE
 (214) 340-2029 FAX

DEVELOPER
 CRESTVIEW REAL ESTATE, L.L.C.
 8214 WESTCHESTER, SUITE 850
 DALLAS, TEXAS 75225
 MR. GREY STOGNER
 (214) 343-4477 PHONE
 (214) 340-2029 FAX

THE SEAL APPEARING ON THIS DOCUMENT WAS AUTHORIZED BY BRANDON E. COX, P.E. 10/09/07 ON 05-24-09 ALTERATION OF A SEALED DOCUMENT WITHOUT PROPER NOTIFICATION TO THE RESPONSIBLE ENGINEER IS AN OFFENSE UNDER THE TEXAS ENGINEERING PRACTICE ACT.
 Brandon E. Cox 05-24-09



POGUE
 ENGINEERING & DEVELOPMENT COMPANY, INC.
 1512 BRAY CENTRAL DRIVE
 SUITE 100
 MCKINNEY, TEXAS 75069
 (214) 544-8880 PHONE
 (214) 544-8882 FAX
 www.PogueEngineering.com

STORM SEWER DETAILS
 STONE CREEK RETAIL
 BLOCK A, LOTS 1-6, STONE CREEK RETAIL ADDITION
 W.T. DEWESE SURVEY, ABSTRACT NO. 71
 CITY OF ROCKWALL, TEXAS
 SHEET NO. C5.08