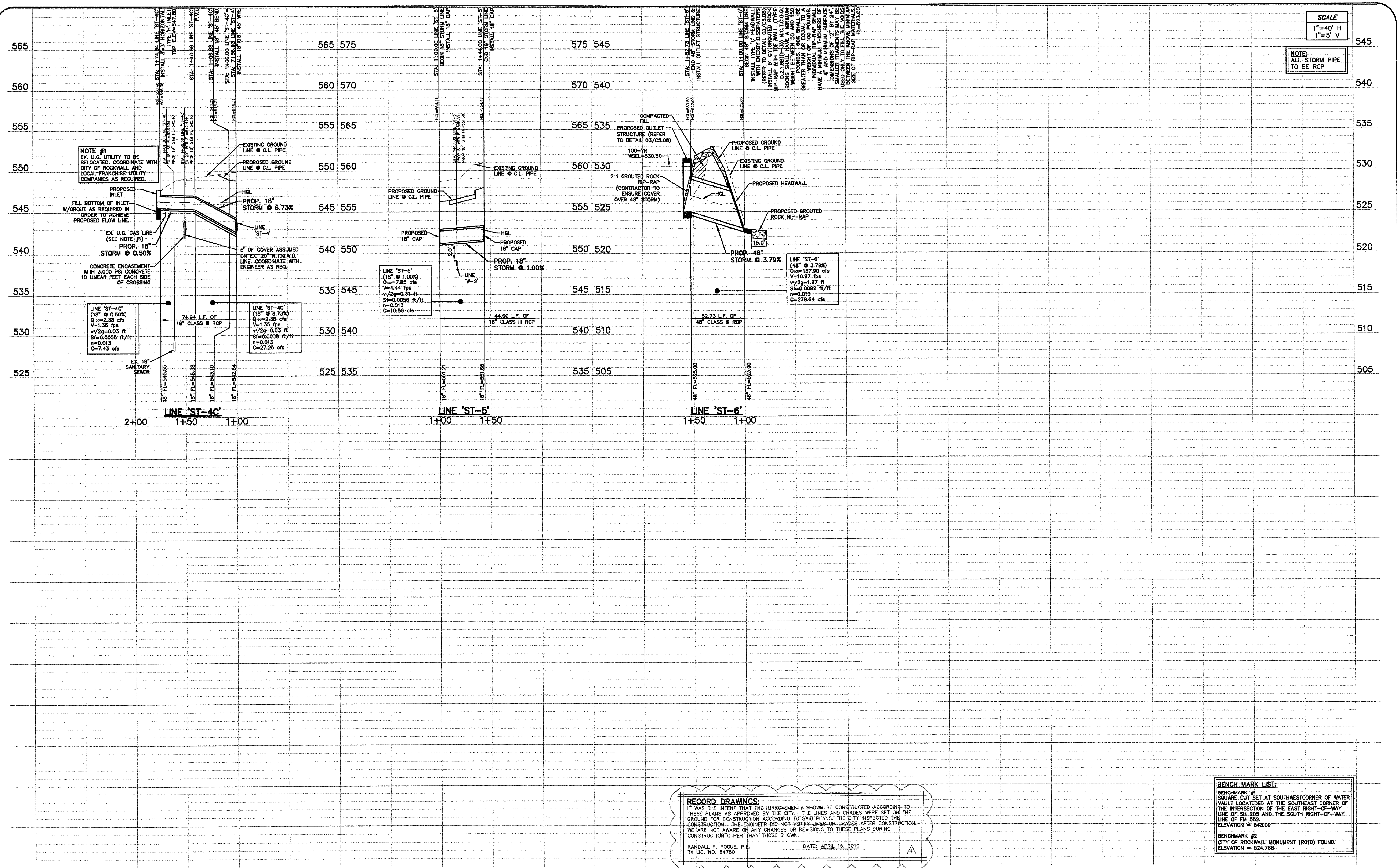


WILLIAMS 04/29/2010 - 4:05PM
 N:\05\1300-1399\1393-08-087\DWG\1393-08-087-07A.DWG
 © POGUE ENGINEERING & DEVELOPMENT COMPANY, INC. 2009. ALL RIGHTS RESERVED. THE ENGINEERING DESIGN, DETAIL AND ENGINEERING DRAWINGS FOR THIS PROJECT AND/OR OVERALL PROJECT ARE THE LEGAL PROPERTY OF POGUE ENGINEERING & DEVELOPMENT COMPANY, INC. THEIR USE FOR REPRODUCTION, CONSTRUCTION, OR DISTRIBUTION IS PROHIBITED UNLESS AUTHORIZED IN WRITING BY POGUE ENGINEERING & DEVELOPMENT COMPANY, INC.



SCALE
 1"=40' H
 1"=5' V

NOTE:
 ALL STORM PIPE
 TO BE RCP

NOTE #1
 EX. U.G. UTILITY TO BE
 RELOCATED. COORDINATE WITH
 CITY OF ROCKWALL AND
 LOCAL FRANCHISE UTILITY
 COMPANIES AS REQUIRED.

FILL BOTTOM OF INLET
 W/GROUT AS REQUIRED IN
 ORDER TO ACHIEVE
 PROPOSED FLOW LINE.

EX. U.G. GAS LINE
 (SEE NOTE #1)
 PROP. 18"
 STORM @ 0.50%

CONCRETE ENCASEMENT
 WITH 3,000 PSI CONCRETE
 10 LINEAR FEET EACH SIDE
 OF CROSSING

LINE 'ST-4C'
 (18" @ 0.50%)
 Q=2.38 cfs
 V=1.35 fps
 v/2g=0.03 ft
 Sf=0.0005 ft/ft
 n=0.013
 C=7.43 cfs

LINE 'ST-4C'
 (18" @ 6.73%)
 Q=2.38 cfs
 V=1.35 fps
 v/2g=0.03 ft
 Sf=0.0005 ft/ft
 n=0.013
 C=27.25 cfs

LINE 'ST-5'
 (18" @ 1.00%)
 Q=7.85 cfs
 V=4.44 fps
 v/2g=0.31 ft
 Sf=0.0056 ft/ft
 n=0.013
 C=10.50 cfs

LINE 'ST-6'
 (48" @ 3.79%)
 Q=137.90 cfs
 V=10.97 fps
 v/2g=1.87 ft
 Sf=0.0092 ft/ft
 n=0.013
 C=279.64 cfs

RECORD DRAWINGS:
 IT WAS THE INTENT THAT THE IMPROVEMENTS SHOWN BE CONSTRUCTED ACCORDING TO THESE PLANS AS APPROVED BY THE CITY. THE LINES AND GRADES WERE SET ON THE GROUND FOR CONSTRUCTION ACCORDING TO SAID PLANS. THE CITY INSPECTED THE CONSTRUCTION. THE ENGINEER DID NOT VERIFY LINES OR GRADES AFTER CONSTRUCTION. WE ARE NOT AWARE OF ANY CHANGES OR REVISIONS TO THESE PLANS DURING CONSTRUCTION OTHER THAN THOSE SHOWN.

RANDALL P. POGUE, P.E. DATE: APRIL 15, 2010
 TX LIC. NO. 84780

BENCHMARK LIST:
 BENCHMARK #1
 SQUARE CUT SET AT SOUTHWEST CORNER OF WATER VAULT LOCATED AT THE INTERSECTION OF THE EAST RIGHT-OF-WAY LINE OF SH 205 AND THE SOUTH RIGHT-OF-WAY LINE OF FM 552.
 ELEVATION = 543.09
 BENCHMARK #2
 CITY OF ROCKWALL MONUMENT (R010) FOUND.
 ELEVATION = 524.788

NO.	DATE	REVISION / DESCRIPTION
04-15-10		RECORD DRAWINGS
02-24-10		ADDED RIGHT TURN LANE ON S.H. 205
07-17-09		SANITARY SEWER & ADA ROUTE REVISIONS
06-19-09		TXDOT COMMENTS

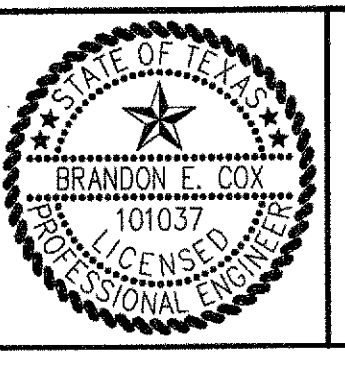
DESIGN	DRAWN	DATE	SCALE	NOTES
BEC	WTW	05-21-09	AS SHOWN	-

OWNER
 METROPLEX ACQUISITION FUND, LP
 8214 WESTCHESTER, SUITE 850
 DALLAS, TEXAS 75225
 MR. GREY STOGNER
 (214) 343-4477 PHONE
 (214) 340-2029 FAX

DEVELOPER
 CRESTVIEW REAL ESTATE, L.L.C.
 8214 WESTCHESTER, SUITE 850
 DALLAS, TEXAS 75225
 MR. GREY STOGNER
 (214) 343-4477 PHONE
 (214) 340-2029 FAX

THE SEAL APPEARING ON THIS DOCUMENT WAS AUTHORIZED BY BRANDON E. COX, P.E. 10/29/07 ON 05-21-09 ALTERATION OF A SEALED DOCUMENT WITHOUT PROPER NOTIFICATION TO THE RESPONSIBLE ENGINEER IS AN OFFENSE UNDER THE TEXAS ENGINEERING PRACTICE ACT.

Brandon E. Cox 05-21-09



POGUE
 ENGINEERING & DEVELOPMENT COMPANY, INC.
 1512 BRAY CENTRAL DRIVE
 SUITE 100
 MCKINNEY, TEXAS 75069
 (214) 544-8880 PHONE
 (214) 544-8882 FAX
 www.PogueEngineering.com

STORM SEWER PROFILES (4 of 4)
 STONE CREEK RETAIL
 BLOCK A, LOTS 1-6, STONE CREEK RETAIL ADDITION
 W.T. DEWEESE SURVEY, ABSTRACT NO. 71
 CITY OF ROCKWALL, TEXAS

SHEET NO.
C5.07

STONE CREEK RETAIL - ROCKWALL
 TEXAS BOARD OF PROFESSIONAL ENGINEERS, CERTIFICATE OF REGISTRATION #00481; TEXAS BOARD OF PROFESSIONAL LAND SURVEYING, CERTIFICATE OF REGISTRATION 100421-00