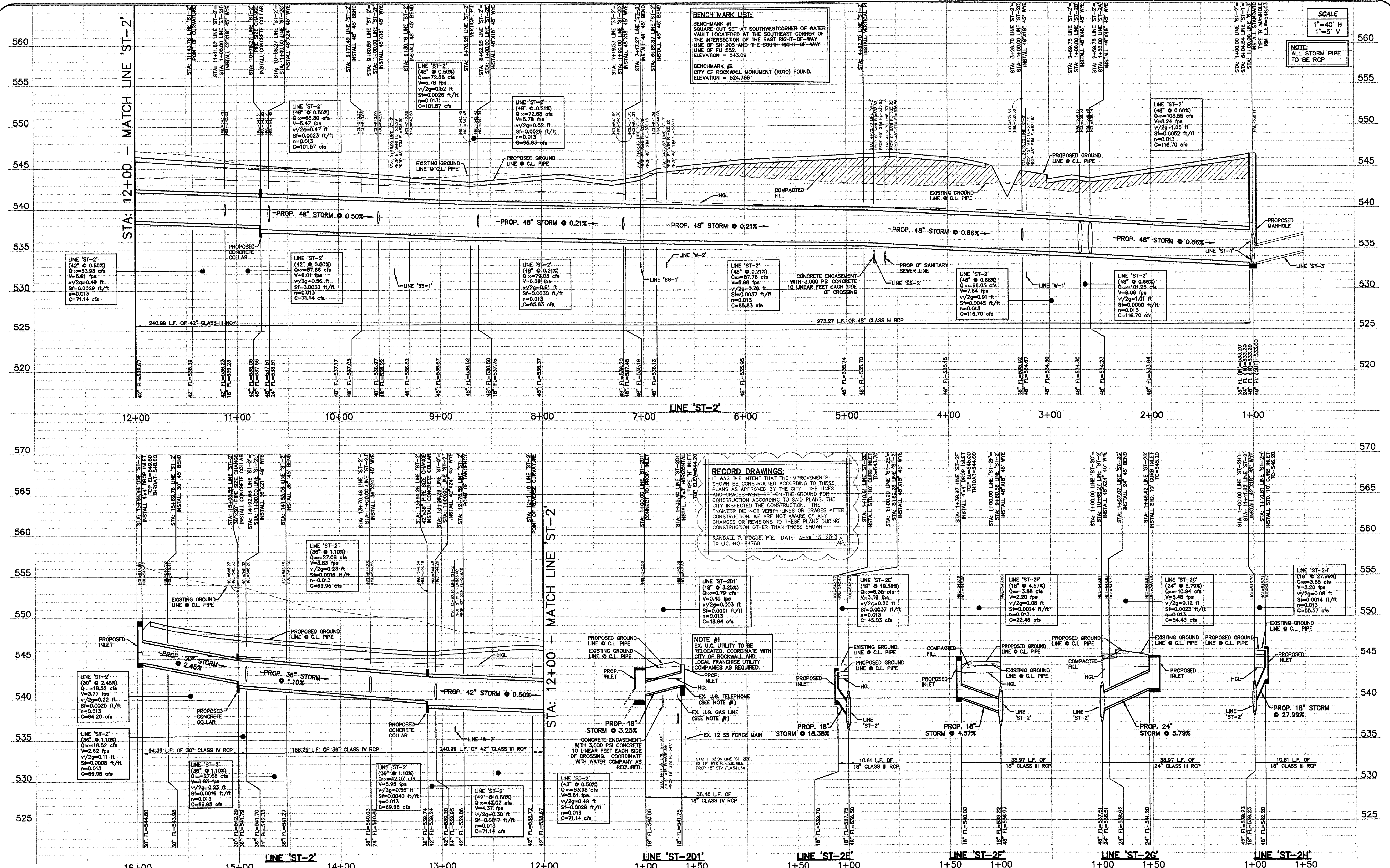


WILLIAMS 04/29/2010 - 4:05PM
 N:\J085\1399\1399-08-087-DWG\DWG1393-08-087-07A.DWG
 THE ENGINEERING DESIGN, DETAIL AND ENGINEERING DRAWINGS FOR THIS PROJECT AND/OR OVERALL PROJECT ARE THE LEGAL PROPERTY OF POGUE ENGINEERING & DEVELOPMENT COMPANY, INC. THEIR USE FOR REPRODUCTION, CONSTRUCTION, OR DISTRIBUTION IS PROHIBITED UNLESS AUTHORIZED IN WRITING BY POGUE ENGINEERING & DEVELOPMENT COMPANY, INC. ALL RIGHTS RESERVED.
 © POGUE ENGINEERING & DEVELOPMENT COMPANY, INC. 2009.



BENCHMARK LIST:
 BENCHMARK #1
 SQUARE CUT SET AT SOUTHWEST CORNER OF WATER VAULT LOCATED AT THE SOUTHWEST CORNER OF THE INTERSECTION OF THE EAST RIGHT-OF-WAY LINE OF FM 552 AND THE SOUTH-RIGHT-OF-WAY ELEVATION = 543.09
 BENCHMARK #2
 CITY OF ROCKWALL MONUMENT (R010) FOUND. ELEVATION = 524.788

SCALE
 1"=40' H
 1"=5' V

NOTE:
 ALL STORM PIPE TO BE RCP

RECORD DRAWINGS:
 IT WAS THE INTENT THAT THE IMPROVEMENTS SHOWN BE CONSTRUCTED ACCORDING TO THESE PLANS AS APPROVED BY THE CITY. THE LINES AND GRADES WERE SET ON THE GROUND FOR CONSTRUCTION ACCORDING TO SAID PLANS. THE ENGINEER DID NOT VERIFY LINES OR GRADES AFTER CONSTRUCTION. WE ARE NOT AWARE OF ANY CHANGES OR REVISIONS TO THESE PLANS DURING CONSTRUCTION OTHER THAN THOSE SHOWN.

RANDALL P. POGUE, P.E. DATE: APRIL 15, 2010
 TX LIC. NO. 84780

NOTE #1
 EX. U.G. UTILITY TO BE RELOCATED, COORDINATE WITH CITY OF ROCKWALL AND LOCAL FRANCHISE UTILITY COMPANIES AS REQUIRED.

EX. U.G. TELEPHONE (SEE NOTE #1)
 EX. U.G. GAS LINE (SEE NOTE #1)
 EX. 12" SS FORCE MAIN

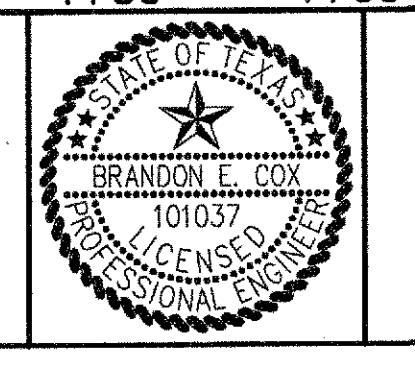
04-15-10	RECORD DRAWINGS			
02-24-10	ADDED RIGHT TURN LANE ON S.H. 205			
07-17-09	SANITARY SEWER & ADA ROUTE REVISIONS			
06-19-09	TxDOT COMMENTS			
NO.	DATE	REVISION / DESCRIPTION		
DESIGN	DRAWN	DATE	SCALE	NOTES
BEC	WTW	05-21-09	AS SHOWN	-

OWNER
 METROPLEX ACQUISITION FUND, LP
 8214 WESTCHESTER, SUITE 850
 DALLAS, TEXAS 75225
 MR. GREY STOGNER
 (214) 343-4477 PHONE
 (214) 340-2029 FAX

DEVELOPER
 CRESTVIEW REAL ESTATE, L.L.C.
 8214 WESTCHESTER, SUITE 850
 DALLAS, TEXAS 75225
 MR. GREY STOGNER
 (214) 343-4477 PHONE
 (214) 340-2029 FAX

THE SEAL APPEARING ON THIS DOCUMENT WAS AUTHORIZED BY BRANDON E. COX, P.E. 10/07/09 ON 05-23-09 FOR ALTERATION OF A SEALED DOCUMENT WITHOUT PROPER NOTIFICATION TO THE RESPONSIBLE ENGINEER IS AN OFFENSE UNDER THE TEXAS ENGINEERING PRACTICE ACT.

Brandon E. Cox 05-23-09



POGUE
 ENGINEERING & DEVELOPMENT COMPANY, INC.
 1512 BRAY CENTRAL DRIVE
 SUITE 100
 MCKINNEY, TEXAS 75069
 (214) 544-8880 PHONE
 (214) 544-8882 FAX
 www.PogueEngineering.com

STORM SEWER PROFILES (2 of 4)

STONE CREEK RETAIL
 BLOCK A, LOTS 1-6, STONE CREEK RETAIL ADDITION
 W.T. DEWESE SURVEY, ABSTRACT NO. 71
 CITY OF ROCKWALL, TEXAS

SHEET NO. **C5.05**

TEXAS BOARD OF PROFESSIONAL ENGINEERS, CERTIFICATE OF REGISTRATION 100421-00