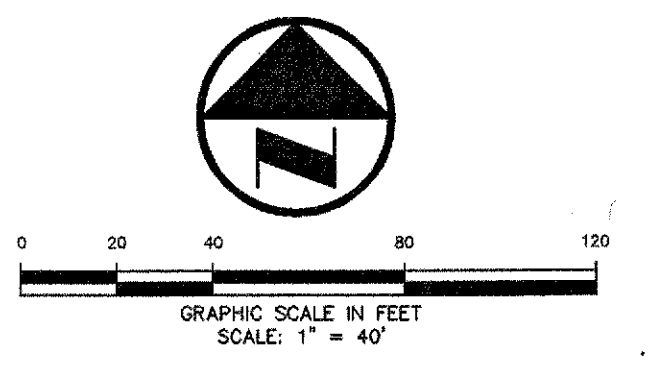
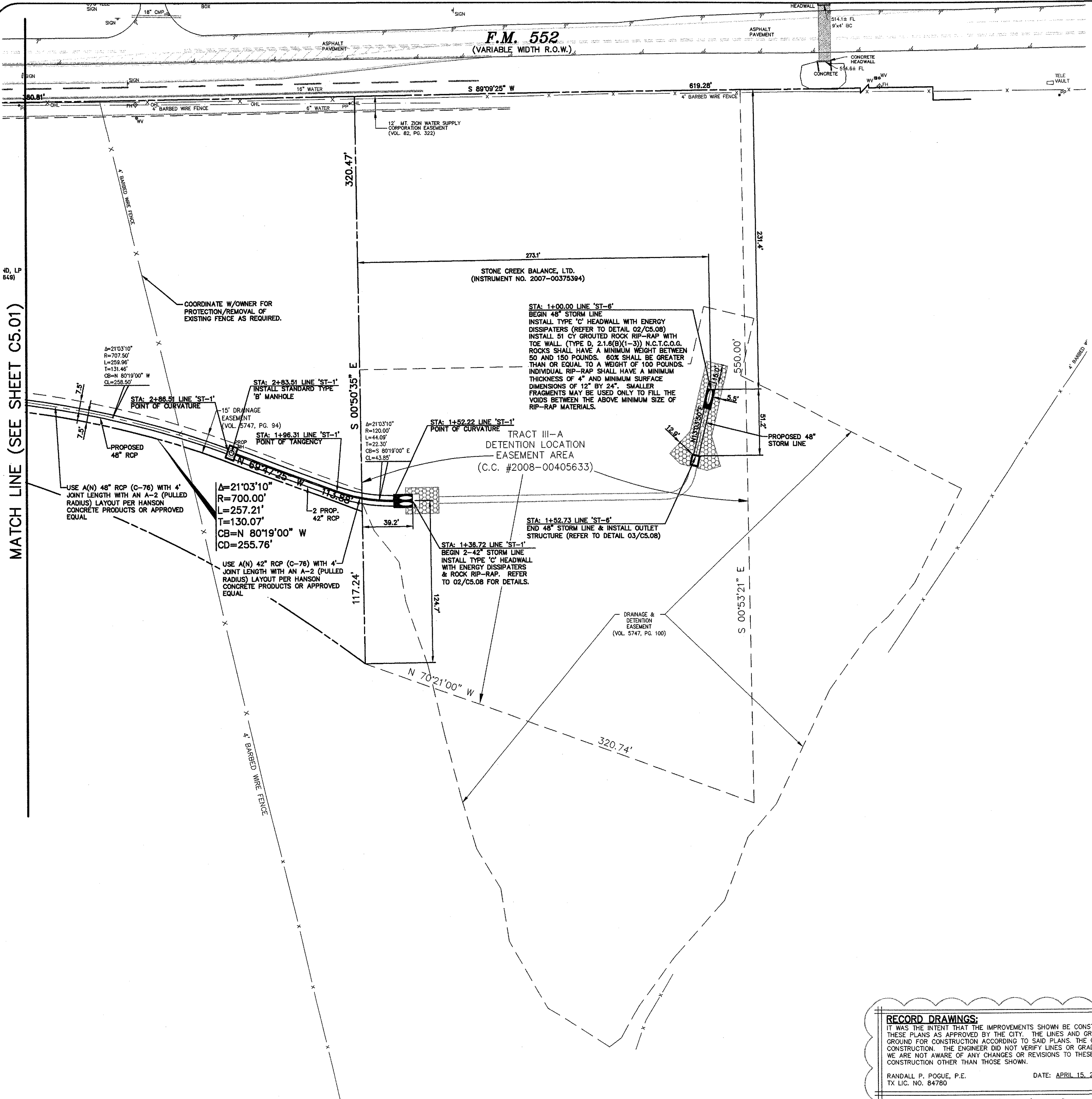


F.M. 552
(VARIABLE WIDTH R.O.W.)



LEGEND

B	BOLLARD
EP	ELECTRIC METER
PP	POWER POLE
LS	LIGHT STANDARD
WM	WATER METER
WV	WATER VALVE
ICV	IRRIGATION CONTROL VALVE
FD	FIRE HYDRANT
FDC	FIRE DEPARTMENT CONNECTION
CO	CLEAN OUT
OH	MANHOLE
GM	GAS METER
TSC	TRAFFIC SIGNAL CONTROL
TSP	TRAFFIC SIGNAL POLE
STN	TRAFFIC SIGN
TELE	TELEPHONE BOX
TV	TV BOX
FP	FLAG POLE
L.A.	LANDSCAPE AREA
---	PROPERTY LINE
O.H.	O.H. POWER LINES
TEL	U/G TELEPHONE LINES
WATER	U/G WATER LINE
GAS	U/G GAS LINE
---	FENCE
---	EXISTING CONTOURS
XXX.XX	EXISTING SPOT GRADES
(C.M.)	CONTROLLING MONUMENT
5/8\"	5/8-INCH IRON ROD WITH 'POGUE ENG & DEV' CAP SET
XXXX	PROPOSED CONTOURS
---	PROPOSED SPOT GRADES
---	PROPOSED EROSION CONTROL
---	PROPOSED DRAINAGE DIVIDES

MATCH LINE (SEE SHEET C5.01)

BENCHMARK LIST:

BENCHMARK #1
SQUARE CUT SET AT SOUTHWEST CORNER OF WATER VAULT LOCATED AT THE SOUTHEAST CORNER OF THE INTERSECTION OF THE EAST RIGHT-OF-WAY LINE OF SH 205 AND THE SOUTH RIGHT-OF-WAY LINE OF FM 552.
ELEVATION = 543.09

BENCHMARK #2
CITY OF ROCKWALL MONUMENT (R010) FOUND.
ELEVATION = 524.789

CAUTION!!!
UNDERGROUND UTILITIES ARE LOCATED IN THIS AREA. 48 HOURS PRIOR TO ANY CONSTRUCTION ACTIVITIES, CONTACT LINE LOCATES FOR FRANCHISE UTILITY INFO. CALL BEFORE YOU DIG.
TEXAS EXCAVATION SAFETY SYSTEM (TESS)
1-800-344-8377
1-800-245-4545
LONE STAR NOTIFICATION CENTER
1-800-669-8344 EXT. 5

BEFORE YOU DIG...

RECORD DRAWINGS:
IT WAS THE INTENT THAT THE IMPROVEMENTS SHOWN BE CONSTRUCTED ACCORDING TO THESE PLANS AS APPROVED BY THE CITY. THE LINES AND GRADES WERE SET ON THE GROUND FOR CONSTRUCTION ACCORDING TO SAID PLANS. THE CITY INSPECTED THE CONSTRUCTION. THE ENGINEER DID NOT VERIFY LINES OR GRADES AFTER CONSTRUCTION. WE ARE NOT AWARE OF ANY CHANGES OR REVISIONS TO THESE PLANS DURING CONSTRUCTION OTHER THAN THOSE SHOWN.

RANDALL P. POGUE, P.E. DATE: APRIL 15, 2010
TX LIC. NO. 84780

FRANCHISE UTILITY NOTES:
1. TXU ENERGY CONSTRUCTION SERVICES - (800) 711-9112
2. ATMOS ENERGY (GAS) - 903-457-2092 - DINAH WOOD
3. AT&T (PHONE) - 903-457-2092 - DWAYNE WELLS

NO.	DATE	REVISION / DESCRIPTION
04-15-10		RECORD DRAWINGS
02-24-10		ADDED RIGHT TURN LANE ON S.H. 205
07-17-09		SANITARY SEWER & ADA ROUTE REVISIONS
06-19-09		TXDOT COMMENTS

OWNER
METROPLEX ACQUISITION FUND, LP
8214 WESTCHESTER, SUITE 850
DALLAS, TEXAS 75225
MR. GREY STOGNER
(214) 343-4477 PHONE
(214) 340-2029 FAX

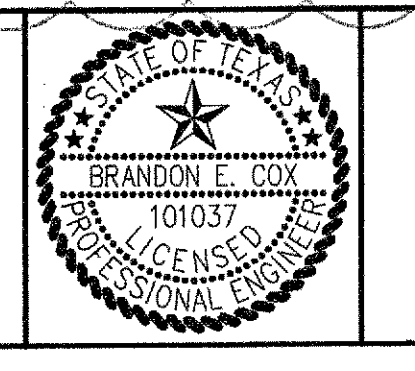
DEVELOPER
CRESTVIEW REAL ESTATE, L.L.C.
8214 WESTCHESTER, SUITE 850
DALLAS, TEXAS 75225
MR. GREY STOGNER
(214) 343-4477 PHONE
(214) 340-2029 FAX

THE SEAL APPEARING ON THIS DOCUMENT WAS AUTHORIZED BY BRANDON E. COX, P.E. LOSS OF 05-11-09 ALTERATION OF A SEALED DOCUMENT WITHOUT PROPER NOTIFICATION TO THE RESPONSIBLE ENGINEER IS AN OFFENSE UNDER THE TEXAS ENGINEERING PRACTICE ACT.

BRANDON E. COX
101037
LICENSED PROFESSIONAL ENGINEER

1512 BRAY CENTRAL DRIVE
SUITE 100
MCKINNEY, TEXAS 75069

(214) 544-8880 PHONE
(214) 544-8882 FAX
www.PogueEngineering.com



POGUE
ENGINEERING & DEVELOPMENT COMPANY, INC.

STORM SEWER PLAN (3 of 3)
STONE CREEK RETAIL
BLOCK A, LOTS 1-6, STONE CREEK RETAIL ADDITION
W.T. DEWEESE SURVEY, ABSTRACT NO. 71
CITY OF ROCKWALL, TEXAS

SHEET NO.
C5.03