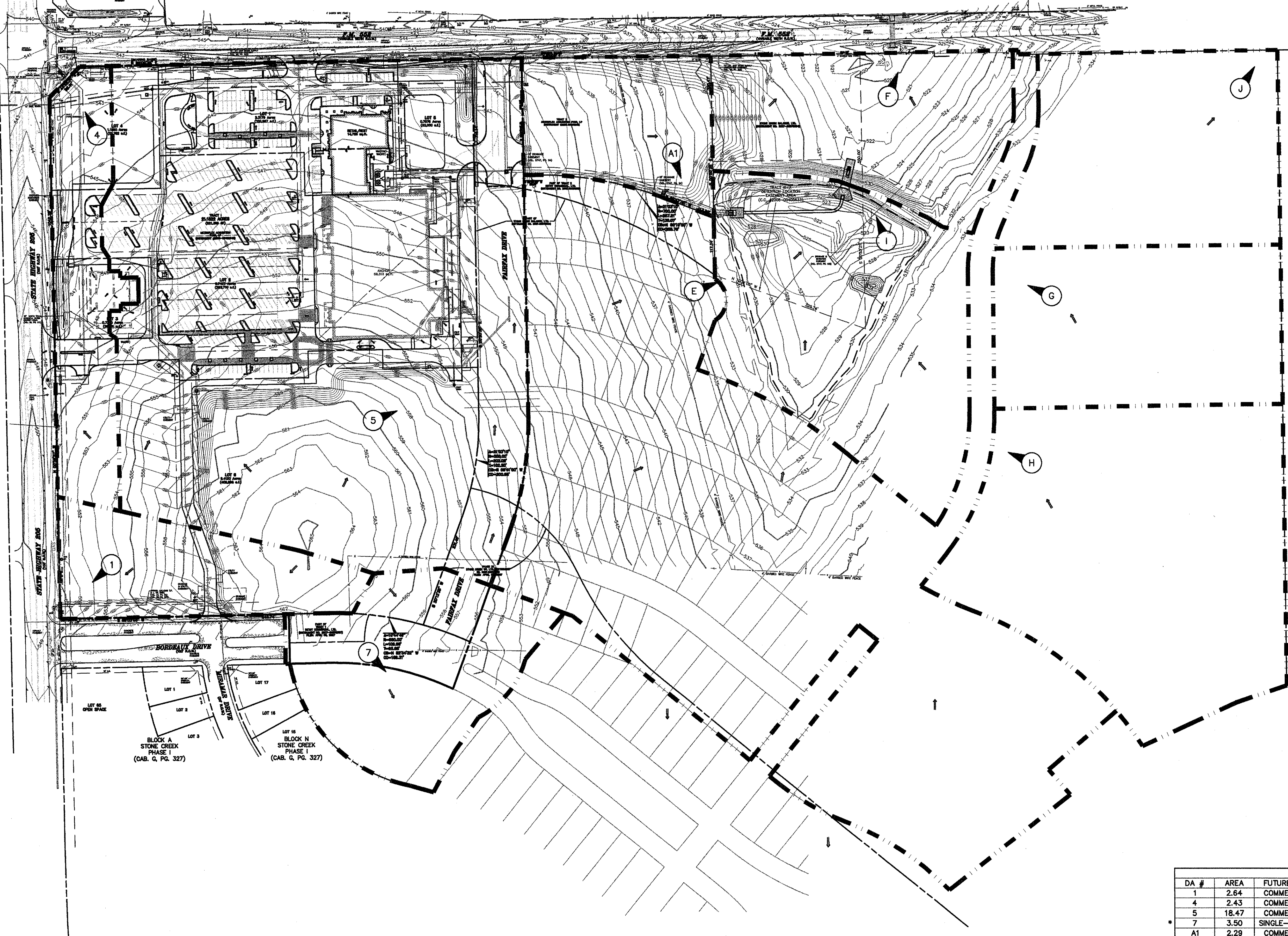


GRAPHIC SCALE IN FEET  
SCALE: 1" = 100'

**LEGEND**

- B. BOLLARD
- EM ○ ELECTRIC METER
- PP ● POWER POLE
- LS ○ LIGHT STANDARD
- WM ○ WATER METER
- WV ○ WATER VALVE
- ICV ○ IRRIGATION CONTROL VALVE
- FDH ○ FIRE HYDRANT
- FDC ○ FIRE DEPARTMENT CONNECTION
- CO ○ CLEAN OUT
- MH ○ MANHOLE
- GM ○ GAS METER
- TSC □ TRAFFIC SIGNAL CONTROL
- TSP □ TRAFFIC SIGNAL POLE
- SIG □ TRAFFIC SIGN
- TELE □ TELEPHONE BOX
- TV □ TV BOX
- FP ● FLAG POLE
- L.A. LANDSCAPE AREA
- — — PROPERTY LINE
- — — O.H. POWER LINES
- — — U/G TELEPHONE LINES
- — — U/G WATER LINE
- — — U/G GAS LINE
- — — FENCE
- — — EXISTING CONTOURS
- xxx.xx EXISTING SPOT GRADES
- (C.M.) CONTROLLING MONUMENT
- SIR 5/8-INCH IRON ROD WITH "ROGUE END & DEY" CAP SET
- PROPOSED CONTOURS
- PROPOSED SPOT GRADES
- PROPOSED EROSION CONTROL
- PROPOSED DRAINAGE DIVIDES



LOT 10 OPEN PHASE  
 LOT 1 LOT 2 LOT 3  
 BLOCK A STONE CREEK PHASE I (CAB. G, PG. 327)  
 LOT 16 LOT 17 LOT 18  
 BLOCK N STONE CREEK PHASE I (CAB. G, PG. 327)

**RECORD DRAWINGS:**  
 IT WAS THE INTENT THAT THE IMPROVEMENTS SHOWN BE CONSTRUCTED ACCORDING TO THESE PLANS AS APPROVED BY THE CITY. THE LINES AND GRADES WERE SET ON THE GROUND FOR CONSTRUCTION ACCORDING TO SAID PLANS. THE CITY INSPECTED THE CONSTRUCTION. THE ENGINEER DID NOT VERIFY LINES OR GRADES AFTER CONSTRUCTION. WE ARE NOT AWARE OF ANY CHANGES OR REVISIONS TO THESE PLANS DURING CONSTRUCTION OTHER THAN THOSE SHOWN.

RANDALL P. POGUE, P.E.  
 TX LIC. NO. 84780

DATE: APRIL 15, 2010

DRAINAGE AREA TABLE/CALCULATIONS						
DA #	AREA	FUTURE USE	C	I <sub>100</sub> DEV.	Q <sub>100</sub>	REMARKS
1	2.64	COMMERCIAL	0.90	9.80	23.3	TO EX. 24" RCP UNDER BORDEAUX DRIVE
4	2.43	COMMERCIAL	0.90	9.80	21.4	TO EX. 36" RCP AT SH 205/FM 552 INTERSECTION
5	18.47	COMMERCIAL	0.90	9.80	162.9	TO PROPOSED DETENTION POND
7	3.50	SINGLE-FAMILY	0.50	9.80	17.1	TO SOUTHEAST
A1	2.29	COMMERCIAL	0.90	9.80	20.2	TO PROPOSED DETENTION POND
E	19.44	SINGLE-FAMILY	0.50	9.80	95.3	TO PROPOSED DETENTION POND
F	3.82	PARK	0.35	8.30	11.1	TO EX. 6'X4' RCBC UNDER F.M. 552
G	4.29	SCHOOL	0.70	9.80	29.4	TO PROPOSED DETENTION POND
H	8.15	PARK	0.35	8.30	23.7	TO PROPOSED DETENTION POND
I	6.06	PARK	0.35	8.30	17.6	TO PROPOSED DETENTION POND
J	4.53	SCHOOL	0.70	9.80	31.1	TO NORTHEAST CORNER

\* DRAINAGE AREAS REFLECTED PER PLANS TITLED "STONE CREEK NORTHERN BASIN DETENTION ANALYSIS", AS PREPARED BY CORWIN ENGINEERING, INC., DATED AUGUST 1, 2008.

NO.	DATE	REVISION / DESCRIPTION
04-15-10		RECORD DRAWINGS
02-24-10		ADDED RIGHT TURN LANE ON S.H. 205
07-17-09		SANITARY SEWER & ADA ROUTE REVISIONS
06-19-09		TXDOT COMMENTS

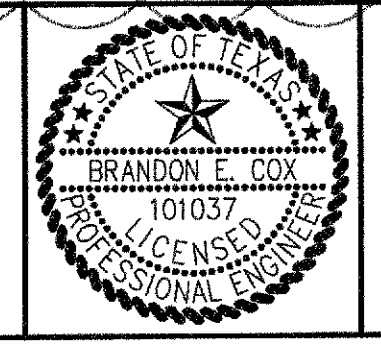
DESIGN	DRAWN	DATE	SCALE	NOTES
BEC	WTW	05-21-09	AS SHOWN	

**OWNER**  
 METROPLEX ACQUISITION FUND, LP  
 8214 WESTCHESTER, SUITE 850  
 DALLAS, TEXAS 75225  
 MR. GREY STOGNER  
 (214) 343-4477 PHONE  
 (214) 340-2029 FAX

**DEVELOPER**  
 CRESTVIEW REAL ESTATE, L.L.C.  
 8214 WESTCHESTER, SUITE 850  
 DALLAS, TEXAS 75225  
 MR. GREY STOGNER  
 (214) 343-4477 PHONE  
 (214) 340-2029 FAX

THE SEAL APPEARING ON THIS DOCUMENT WAS AUTHORIZED BY BRANDON E. COX, P.E. 10/07/09 ON 05-21-09 ALTERATION OF A SEALED DOCUMENT WITHOUT PROPER NOTIFICATION TO THE RESPONSIBLE ENGINEER IS AN OFFENSE UNDER THE TEXAS ENGINEERING PRACTICE ACT.

BRANDON E. COX  
 05-21-09



**POGUE**  
 ENGINEERING & DEVELOPMENT COMPANY, INC.

1512 BRAY CENTRAL DRIVE  
 SUITE 100  
 MCKINNEY, TEXAS 75069

(214) 544-8860 PHONE  
 (214) 544-8862 FAX  
 www.PogueEngineering.com

**REGIONAL DRAINAGE AREA MAP**

STONE CREEK RETAIL  
 BLOCK A, LOTS 1-6, STONE CREEK RETAIL ADDITION  
 W.T. DEWEESE SURVEY, ABSTRACT NO. 71  
 CITY OF ROCKWALL, TEXAS

SHEET NO. C2.02

T:\LW\04-29-2010 - 3:52PM  
 N:\JOBS\1300-1399\1393-08-08\DWG\1393-08-08-07A.DWG  
 © POGUE ENGINEERING & DEVELOPMENT COMPANY, INC. 2008. ALL RIGHTS RESERVED. THE ENGINEERING DESIGN, DETAIL AND ENGINEERING DRAWINGS FOR THIS PROJECT AND/OR OVERALL PROJECT ARE THE LEGAL PROPERTY OF POGUE ENGINEERING & DEVELOPMENT COMPANY, INC. THEIR USE FOR REPRODUCTION, CONSTRUCTION, OR DISTRIBUTION IS PROHIBITED UNLESS AUTHORIZED IN WRITING BY POGUE ENGINEERING & DEVELOPMENT COMPANY, INC.

TEXAS BOARD OF PROFESSIONAL ENGINEERS, CERTIFICATE OF REGISTRATION #00461, TEXAS BOARD OF PROFESSIONAL LAND SURVEYING, CERTIFICATE OF REGISTRATION 100421-00