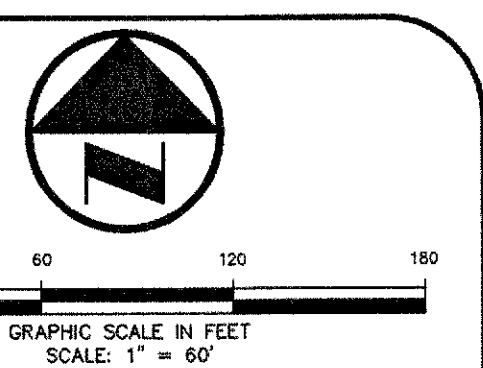
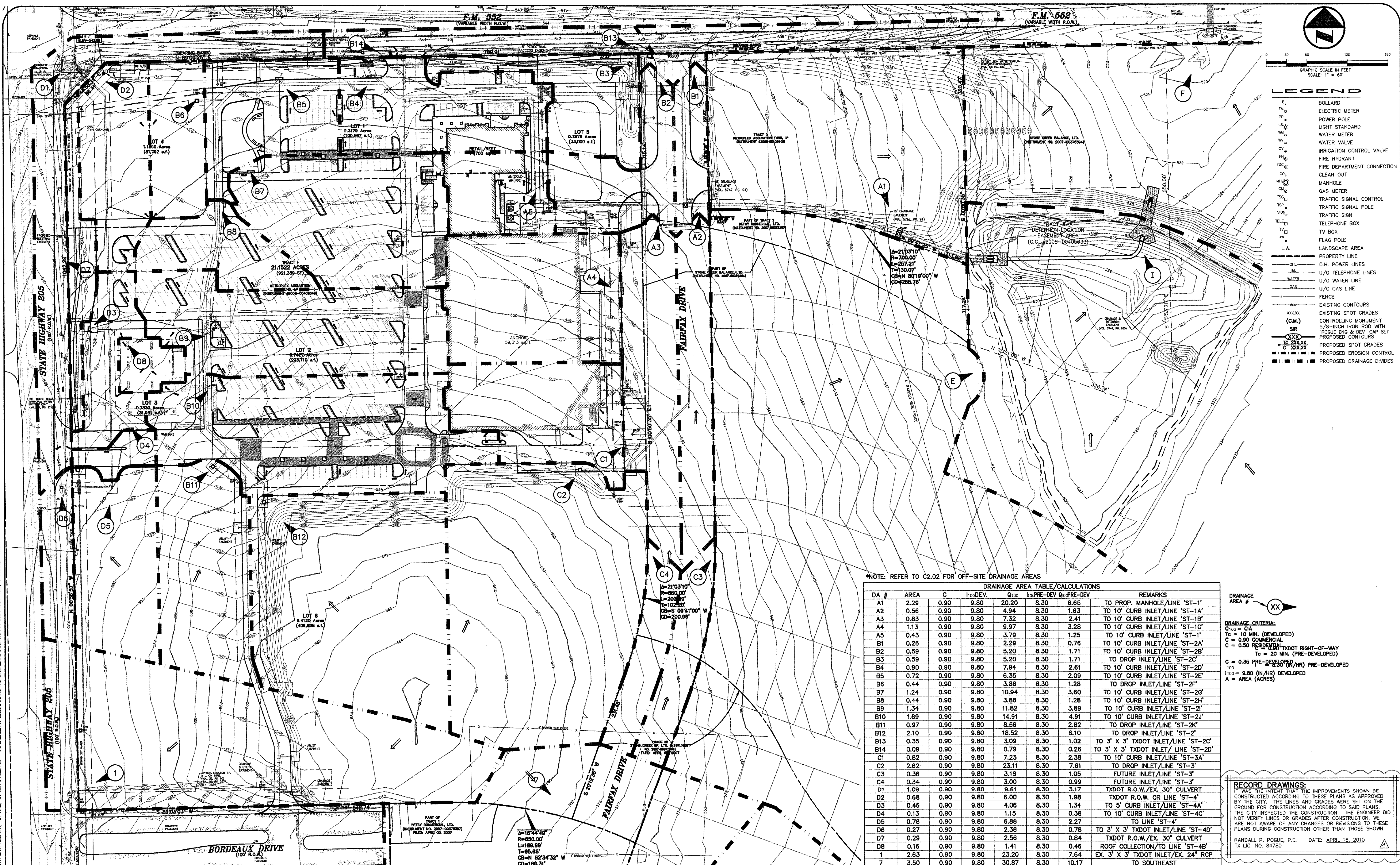


WILLIAMS 04/29/2010 - 3:51PM
 N:\0851\100-1595\1595-08-087\DWG\1595-08-087-07A.DWG
 © POGUE ENGINEERING & DEVELOPMENT COMPANY, INC. 2009. ALL RIGHTS RESERVED. THE ENGINEERING DESIGN, DETAIL AND ENGINEERING DRAWINGS FOR THIS PROJECT AND/OR OVERALL PROJECT ARE THE LEGAL PROPERTY OF POGUE ENGINEERING & DEVELOPMENT COMPANY, INC. THEIR USE FOR REPRODUCTION, CONSTRUCTION OR DISTRIBUTION IS PROHIBITED UNLESS AUTHORIZED IN WRITING BY POGUE ENGINEERING & DEVELOPMENT COMPANY, INC.



LEGEND

B	BOLLARD
EM	ELECTRIC METER
PP	POWER POLE
LS*	LIGHT STANDARD
WM	WATER METER
WV	WATER VALVE
ICV	IRRIGATION CONTROL VALVE
FH	FIRE HYDRANT
FDC	FIRE DEPARTMENT CONNECTION
CO	CLEAN OUT
WH	MANHOLE
GM	GAS METER
TSC	TRAFFIC SIGNAL CONTROL
TSP	TRAFFIC SIGNAL POLE
SIG	TRAFFIC SIGN
TELE	TELEPHONE BOX
TV	TV BOX
FP	FLAG POLE
L.A.	LANDSCAPE AREA
---	PROPERTY LINE
---	O.H. POWER LINES
---	U/G TELEPHONE LINES
---	U/G WATER LINE
---	U/G GAS LINE
---	FENCE
---	EXISTING CONTOURS
XXX.XX	EXISTING SPOT GRADES
(C.M.)	CONTROLLING MONUMENT
SIR	5/8-INCH IRON ROD WITH "POGUE ENG & DEV" CAP SET
---	PROPOSED CONTOURS
---	PROPOSED SPOT GRADES
---	PROPOSED EROSION CONTROL
---	PROPOSED DRAINAGE DIVIDES

*NOTE: REFER TO C2.02 FOR OFF-SITE DRAINAGE AREAS

DRAINAGE AREA TABLE / CALCULATIONS									
DA #	AREA	C	1000DEV.	Q ₁₀₀	100PRE-DEV	Q ₁₀₀ PRE-DEV	REMARKS		
A1	2.29	0.90	9.80	20.20	8.30	6.65	TO PROP. MANHOLE/LINE 'ST-1'		
A2	0.56	0.90	9.80	4.94	8.30	1.63	TO 10' CURB INLET/LINE 'ST-1A'		
A3	0.83	0.90	9.80	7.32	8.30	2.41	TO 10' CURB INLET/LINE 'ST-1B'		
A4	1.13	0.90	9.80	9.97	8.30	3.28	TO 10' CURB INLET/LINE 'ST-1C'		
A5	0.43	0.90	9.80	3.79	8.30	1.25	TO 10' CURB INLET/LINE 'ST-1'		
B1	0.26	0.90	9.80	2.29	8.30	0.76	TO 10' CURB INLET/LINE 'ST-2A'		
B2	0.59	0.90	9.80	5.20	8.30	1.71	TO 10' CURB INLET/LINE 'ST-2B'		
B3	0.59	0.90	9.80	5.20	8.30	1.71	TO DROP INLET/LINE 'ST-2C'		
B4	0.90	0.90	9.80	7.94	8.30	2.61	TO 10' CURB INLET/LINE 'ST-2D'		
B5	0.72	0.90	9.80	6.35	8.30	2.09	TO 10' CURB INLET/LINE 'ST-2E'		
B6	0.44	0.90	9.80	3.88	8.30	1.28	TO DROP INLET/LINE 'ST-2F'		
B7	1.24	0.90	9.80	10.94	8.30	3.60	TO 10' CURB INLET/LINE 'ST-2G'		
B8	0.44	0.90	9.80	3.88	8.30	1.28	TO 10' CURB INLET/LINE 'ST-2H'		
B9	1.34	0.90	9.80	11.82	8.30	3.89	TO 10' CURB INLET/LINE 'ST-2I'		
B10	1.69	0.90	9.80	14.91	8.30	4.91	TO 10' CURB INLET/LINE 'ST-2J'		
B11	0.97	0.90	9.80	8.56	8.30	2.82	TO DROP INLET/LINE 'ST-2K'		
B12	2.10	0.90	9.80	18.52	8.30	6.10	TO DROP INLET/LINE 'ST-2'		
B13	0.35	0.90	9.80	3.09	8.30	1.02	TO 3' X 3' TxDOT INLET/LINE 'ST-2C'		
B14	0.09	0.90	9.80	0.79	8.30	0.26	TO 3' X 3' TxDOT INLET/LINE 'ST-2D'		
C1	0.82	0.90	9.80	7.23	8.30	2.38	TO 10' CURB INLET/LINE 'ST-3A'		
C2	2.62	0.90	9.80	23.11	8.30	7.61	TO DROP INLET/LINE 'ST-3'		
C3	0.36	0.90	9.80	3.18	8.30	1.05	FUTURE INLET/LINE 'ST-3'		
C4	0.34	0.90	9.80	3.00	8.30	0.99	FUTURE INLET/LINE 'ST-3'		
D1	1.09	0.90	9.80	9.61	8.30	3.17	TxDOT R.O.W./EX. 30' CULVERT		
D2	0.68	0.90	9.80	6.00	8.30	1.98	TxDOT R.O.W. OR LINE 'ST-4'		
D3	0.46	0.90	9.80	4.06	8.30	1.34	TO 5' CURB INLET/LINE 'ST-4A'		
D4	0.13	0.90	9.80	1.15	8.30	0.38	TO 10' CURB INLET/LINE 'ST-4C'		
D5	0.78	0.90	9.80	6.88	8.30	2.27	TO LINE 'ST-4'		
D6	0.27	0.90	9.80	2.38	8.30	0.78	TO 3' X 3' TxDOT INLET/LINE 'ST-4D'		
D7	0.29	0.90	9.80	2.56	8.30	0.84	TxDOT R.O.W./EX. 30' CULVERT		
D8	0.16	0.90	9.80	1.41	8.30	0.46	ROOF COLLECTION TO LINE 'ST-4B'		
1	2.63	0.90	9.80	23.20	8.30	7.64	EX. 3' X 3' TxDOT INLET/EX. 24' RCP		
7	3.50	0.90	9.80	30.87	8.30	10.17	TO SOUTHEAST		

DRAINAGE AREA # XX

DRAINAGE CRITERIA:
 Q₁₀₀ = CA
 T₁₀ = 10 MIN. (DEVELOPED)
 C = 0.90 COMMERCIAL
 C = 0.50 RESIDENTIAL
 T₂₀ = 20 MIN. (PRE-DEVELOPED)
 C = 0.35 PRE-DEVELOPED
 100
 1100 = 9.80 (N/HR) DEVELOPED
 A = AREA (ACRES)

RECORD DRAWINGS:
 IT WAS THE INTENT THAT THE IMPROVEMENTS SHOWN BE CONSTRUCTED ACCORDING TO THESE PLANS AS APPROVED BY THE CITY. THE LINES AND GRADES WERE SET ON THE GROUND FOR CONSTRUCTION ACCORDING TO SAID PLANS. THE CITY INSPECTED THE CONSTRUCTION. THE ENGINEER DID NOT VERIFY LINES OR GRADES AFTER CONSTRUCTION. WE ARE NOT AWARE OF ANY CHANGES OR REVISIONS TO THESE PLANS DURING CONSTRUCTION OTHER THAN THOSE SHOWN.

RANDALL P. POGUE, P.E. DATE: APRIL 15, 2010
 TX LIC. NO. 84780

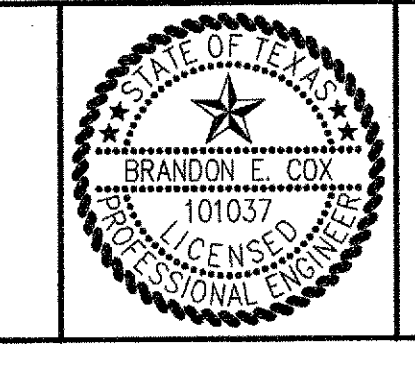
NO.	DATE	REVISION / DESCRIPTION
04-15-10	RECORD DRAWINGS	
02-24-10	ADDED RIGHT TURN LANE ON S.H. 205	
07-17-09	SANITARY SEWER & ADA ROUTE REVISIONS	
06-19-09	TxDOT COMMENTS	

OWNER
 METROPLEX ACQUISITION FUND, LP
 8214 WESTCHESTER, SUITE 850
 DALLAS, TEXAS 75225
 MR. GREY STOGNER
 (214) 343-4477 PHONE
 (214) 340-2029 FAX

DEVELOPER
 CRESTVIEW REAL ESTATE, L.L.C.
 8214 WESTCHESTER, SUITE 850
 DALLAS, TEXAS 75225
 MR. GREY STOGNER
 (214) 343-4477 PHONE
 (214) 340-2029 FAX

THE SEAL APPEARING ON THIS DOCUMENT WAS AUTHORIZED BY BRANDON E. COX, P.E. LICENSED PROFESSIONAL ENGINEER, STATE OF TEXAS, LICENSE NO. 101037, ON 05-21-09. ALTERATION OF A SEALED DOCUMENT WITHOUT PROPER NOTIFICATION TO THE RESPONSIBLE ENGINEER IS AN OFFENSE UNDER THE TEXAS ENGINEERING PRACTICE ACT.

Brandon E. Cox 05-21-09



POGUE
 ENGINEERING & DEVELOPMENT COMPANY, INC.
 1512 BRAY CENTRAL DRIVE
 SUITE 100
 MCKINNEY, TEXAS 75069
 (214) 544-8880 PHONE
 (214) 544-8882 FAX
 www.PogueEngineering.com

DRAINAGE AREA MAP
 STONE CREEK RETAIL
 BLOCK A, LOTS 1-6, STONE CREEK RETAIL ADDITION
 W.T. DEWEES SURVEY, ABSTRACT NO. 71
 CITY OF ROCKWALL, TEXAS

C2.01

SHEET NO.

TEXAS BOARD OF PROFESSIONAL ENGINEERS, CERTIFICATE OF REGISTRATION # 000461-00 TEXAS BOARD OF PROFESSIONAL LAND SURVEYING, CERTIFICATE OF REGISTRATION 100461-00