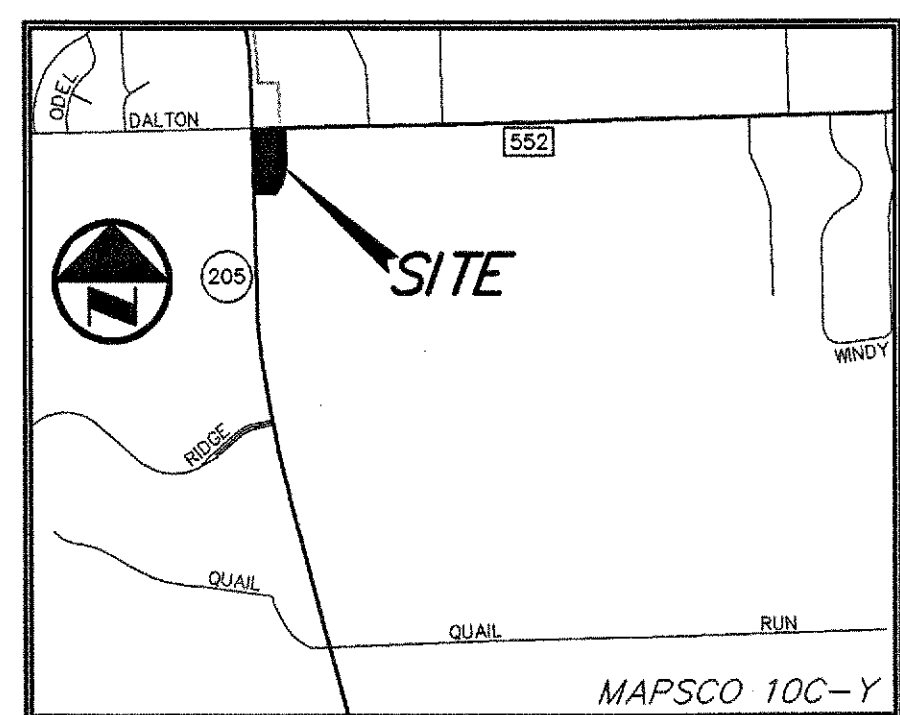


MATCH LINE (SEE SHEET C1.01)

MATCH LINE (SEE SHEET C1.01)



VICINITY MAP NOT TO SCALE



GRAPHIC SCALE IN FEET SCALE: 1" = 40'

LEGEND

- BOLLARD
ELECTRIC METER
POWER POLE
LIGHT STANDARD
WATER METER
WATER VALVE
IRRIGATION CONTROL VALVE
FIRE HYDRANT
FIRE DEPARTMENT CONNECTION
CLEAN OUT
GAS METER
TRAFFIC SIGNAL CONTROL
TRAFFIC SIGNAL POLE
TRAFFIC SIGN
TELEPHONE BOX
TV BOX
FLAG POLE
LANDSCAPE AREA
PROPERTY LINE
O.H. POWER LINES
U/G TELEPHONE LINES
U/G WATER LINE
U/G GAS LINE
FENCE
EXISTING CONTOURS
EXISTING SPOT GRADES
CONTROLLING MONUMENT
5/8-INCH IRON ROD WITH 'POGUE ENG & DEV' CAP SET
PROPOSED CONTOURS
PROPOSED SPOT GRADES
PROPOSED EROSION CONTROL
PROPOSED DRAINAGE DIVIDES

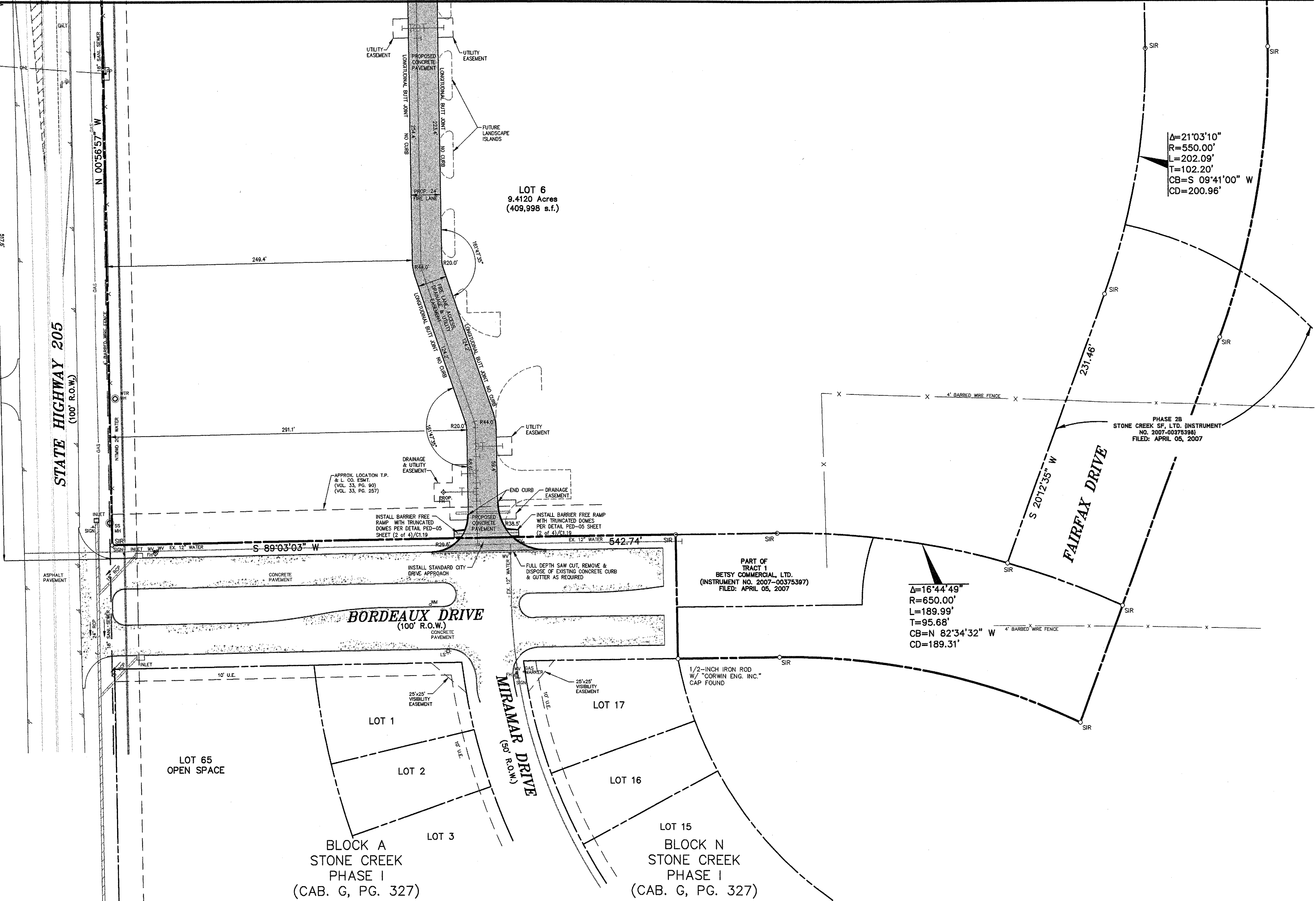
PAVEMENT LEGEND

- STANDARD PAVEMENT
FIRE LANE PAVEMENT
DUMPSTER PAD AND APRON
COLORED CONCRETE W/4" DIAGONAL SAW CUT PATTERN

ADA ROUTE

NOTE: MAXIMUM SLOPE FOR ALL ADA PATHS 5% MAX. CROSS FALL IS 2% FOR THE FIRST FIVE FEET FROM THE DOOR. A 2% SLOPE (MAX.) MUST BE MAINTAINED

NOTE: ALL DIMENSIONS ARE FROM BACK OF CURB TO BACK OF CURB, UNLESS OTHERWISE NOTED.



LOT 6 9.4120 Acres (409,998 s.f.)

Delta=21'03'10" R=550.00' L=202.09' T=102.20' CB=S 09'41'00" W CD=200.96'

Delta=16'44'49" R=650.00' L=189.99' T=95.68' CB=N 82'34'32" W CD=189.31'

PART OF TRACT 1 Betsy Commercial, Ltd. (Instrument No. 2007-00375397) FILED: APRIL 05, 2007

PHASE 2B Stone Creek S.F. Ltd. (Instrument No. 2007-00375398) FILED: APRIL 05, 2007

LOT 65 OPEN SPACE
LOT 1
LOT 2
LOT 3
BLOCK A STONE CREEK PHASE I (CAB. G, PG. 327)

LOT 17
LOT 16
LOT 15
BLOCK N STONE CREEK PHASE I (CAB. G, PG. 327)

CAUTION!!! UNDERGROUND UTILITIES ARE LOCATED IN THIS AREA. 48 HOURS PRIOR TO ANY CONSTRUCTION ACTIVITIES, CONTACT LINE LOCATES FOR FRANCHISE UTILITY INFO. CALL BEFORE YOU DIG: TEXAS EXCAVATION SAFETY SYSTEM (TESS) 1-800-344-8377 TEXAS ONE CALL SYSTEMS 1-800-245-4545 LONE STAR NOTIFICATION CENTER 1-800-869-8344 EXT. 5 BEFORE YOU DIG...

BENCH MARK LIST: BENCHMARK #1 SQUARE CUT SET AT SOUTHWEST CORNER OF WATER VAULT LOCATED AT THE SOUTHEAST CORNER OF THE INTERSECTION OF THE EAST RIGHT-OF-WAY LINE OF SH 205 AND THE SOUTH RIGHT-OF-WAY LINE OF FM 552. ELEVATION = 543.09 BENCHMARK #2 CITY OF ROCKWALL MONUMENT (R010) FOUND. ELEVATION = 524.789

FRANCHISE UTILITY NOTES: 1. TXU ENERGY CONSTRUCTION SERVICES - (800) 711-9112 2. ATMOS ENERGY (GAS) - 903-457-2092 - DINAH WOOD 3. AT&T (PHONE) - 903-457-2092 - DWAYNE WELLS

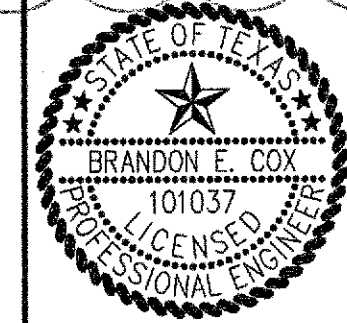
RECORD DRAWINGS: IT WAS THE INTENT THAT THE IMPROVEMENTS SHOWN BE CONSTRUCTED ACCORDING TO THESE PLANS AS APPROVED BY THE CITY. THE LINES AND GRADES WERE SET ON THE GROUND FOR CONSTRUCTION ACCORDING TO SAID PLANS. THE CITY INSPECTED THE CONSTRUCTION. THE ENGINEER DID NOT VERIFY LINES OR GRADES AFTER CONSTRUCTION. WE ARE NOT AWARE OF ANY CHANGES OR REVISIONS TO THESE PLANS DURING CONSTRUCTION OTHER THAN THOSE SHOWN. RANDALL P. POGUE, P.E. DATE: APRIL 15, 2010 TX LIC. NO. 84780

Table with columns: NO., DATE, REVISION / DESCRIPTION, DESIGN, DRAWN, DATE, SCALE, NOTES. Includes revisions for record drawings, right turn lane, and utility comments.

OWNER: METROPLEX ACQUISITION FUND, LP 8214 WESTCHESTER, SUITE 850 DALLAS, TEXAS 75225 MR. GREY STOGNER (214) 343-4477 PHONE (214) 340-2029 FAX

DEVELOPER: CRESTVIEW REAL ESTATE, L.L.C. 8214 WESTCHESTER, SUITE 850 DALLAS, TEXAS 75225 MR. GREY STOGNER (214) 343-4477 PHONE (214) 340-2029 FAX

THE SEAL APPEARING ON THIS DOCUMENT WAS AUTHORIZED BY BRANDON E. COX, P.E. 10/29/07 ON 05-21-09 ALTERATION OF A SEALED DOCUMENT WITHOUT PROPER NOTIFICATION TO THE RESPONSIBLE ENGINEER IS AN OFFENSE UNDER THE TEXAS ENGINEERING PRACTICE ACT. Brandon E. Cox 05-21-09



POGUE ENGINEERING & DEVELOPMENT COMPANY, INC. 1512 BRAY CENTRAL DRIVE SUITE 100 MCKINNEY, TEXAS 75069 (214) 544-8880 PHONE (214) 544-8882 FAX www.PogueEngineering.com

SITE PLAN (2 of 3) STONE CREEK RETAIL BLOCK A, LOTS 1-6, STONE CREEK RETAIL ADDITION W.T. DEWESE SURVEY, ABSTRACT NO. 71 CITY OF ROCKWALL, TEXAS

SHEET NO. C1.02

WILLIAMS 04/29/2010 - 3:40PM N:\DOCS\1300-1399\1393-08-087\DWG\1393-08-087-07A.DWG © POGUE ENGINEERING & DEVELOPMENT COMPANY, INC. 2009. ALL RIGHTS RESERVED. THE ENGINEERING DESIGN, DETAIL AND ENGINEERING DRAWINGS FOR THIS PROJECT AND/OR OVERALL PROJECT ARE THE LEGAL PROPERTY OF POGUE ENGINEERING & DEVELOPMENT COMPANY, INC. THEIR USE FOR REPRODUCTION, CONSTRUCTION, OR DISTRIBUTION IS PROHIBITED UNLESS AUTHORIZED IN WRITING BY POGUE ENGINEERING & DEVELOPMENT COMPANY, INC.

STONE CREEK RETAIL - ROCKWALL TEXAS BOARD OF PROFESSIONAL ENGINEERS, CERTIFICATE OF REGISTRATION # 000461; TEXAS BOARD OF PROFESSIONAL LAND SURVEYING, CERTIFICATE OF REGISTRATION 100421-00