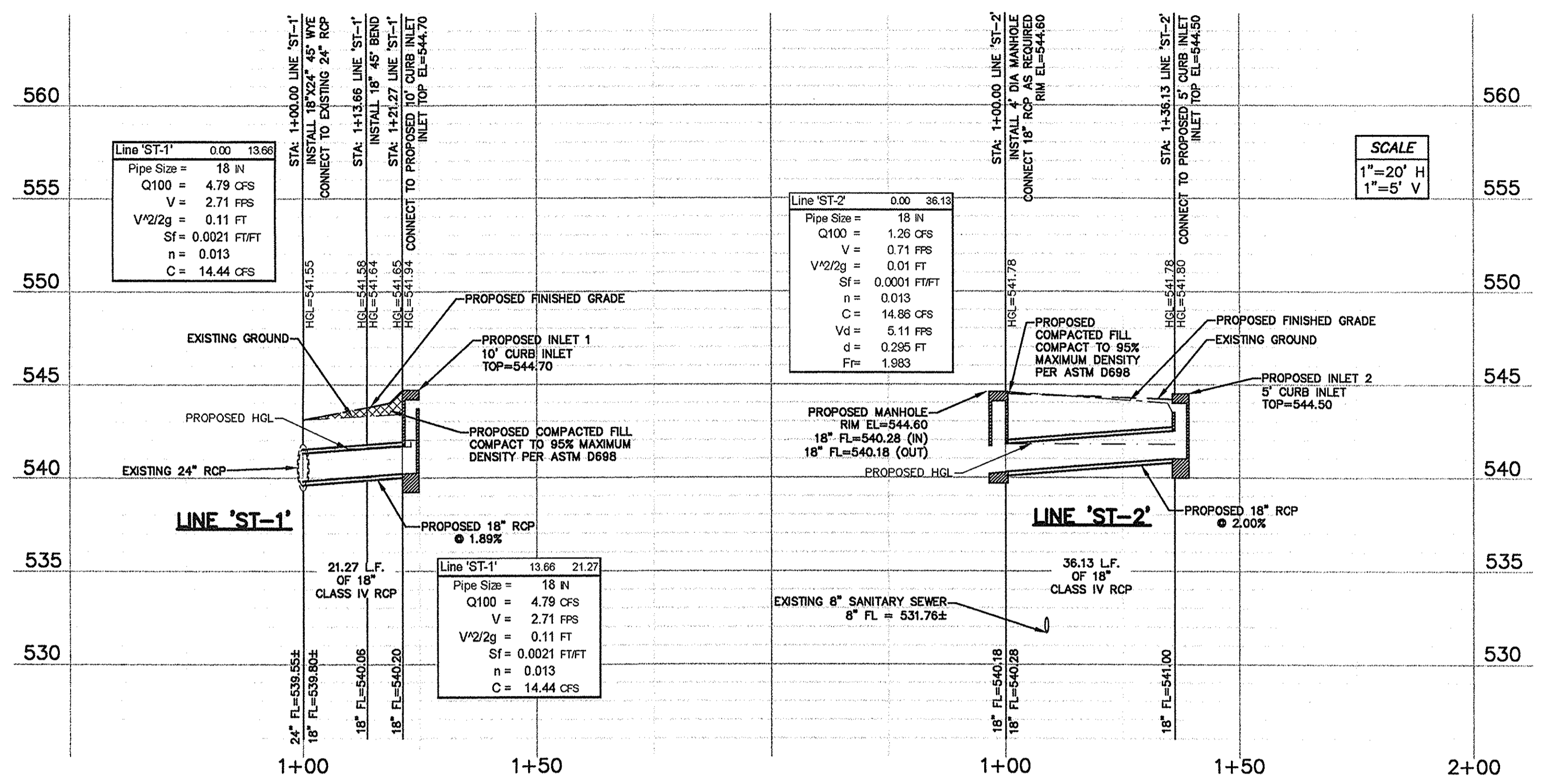


RECORDS 10/10/2013 5:15PM  
 1393-12-073-STORM SEWER PLAN.DWG  
 10/10/2013 5:15PM  
 © POGUE ENGINEERING & DEVELOPMENT COMPANY, INC. 2013. ALL RIGHTS RESERVED. THE ENGINEERING DESIGN, DETAIL AND ENGINEERING DRAWINGS FOR THIS PROJECT AND/OR OVERALL PROJECT ARE THE LEGAL PROPERTY OF POGUE ENGINEERING & DEVELOPMENT COMPANY, INC. THEIR USE FOR REPRODUCTION, CONSTRUCTION, OR DISTRIBUTION IS PROHIBITED UNLESS AUTHORIZED IN WRITING BY POGUE ENGINEERING & DEVELOPMENT COMPANY, INC.



**SCALE**  
 1"=20' H  
 1"=5' V

**RECORD DRAWINGS:**  
 IT WAS THE INTENT THAT THE IMPROVEMENTS SHOWN BE CONSTRUCTED ACCORDING TO THESE PLANS AS APPROVED BY THE CITY. THE LINES AND GRADES WERE SET ON THE GROUND FOR CONSTRUCTION ACCORDING TO SAID PLANS. THE CITY INSPECTED THE CONSTRUCTION. WE ARE NOT AWARE OF ANY CHANGES OR REVISIONS TO THESE PLANS DURING CONSTRUCTION OTHER THAN THOSE SHOWN. DATE: OCTOBER 10, 2013.

ALL RESPONSIBILITY FOR ADEQUACY OF DESIGN REMAINS WITH THE DESIGN ENGINEER. THE CITY OF ROCKWALL, IN REVIEWING AND RELEASING PLANS FOR CONSTRUCTION, ASSUMES NO RESPONSIBILITY FOR ADEQUACY OR ACCURACY OF DESIGN.

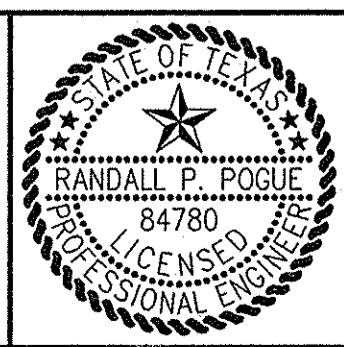
NO.	DATE	DESCRIPTION	PI NUMBER
2	10-10-13	RECORD DRAWINGS	
1	5-9-13	REVISED ROOF DRAINAGE DESIGN	
DESIGN	DRAWN	DATE	PI NUMBER
RPP	RND	10-10-2013	1393-12-073

**PROJECT INFORMATION**  
 STONE CREEK RETAIL ADDITION  
 BLOCK A, LOT 4, STONE CREEK RETAIL ADDITION  
 CITY OF ROCKWALL, TEXAS  
 W.T. DEWEESE SURVEY, ABSTRACT NO. 71  
 PROPOSED USE: RETAIL  
 ZONING: PD-70

**OWNER/DEVELOPER**  
 METROPLEX ACQUISITION FUND, L.P.  
 15150 PRESTON ROAD, SUITE 210  
 DALLAS, TEXAS 75248  
 MR. GREY STOGNER  
 (214) 343-4477 PHONE  
 (214) 340-2029 FAX

THE SEAL APPEARING ON THIS DOCUMENT WAS AUTHORIZED BY RANDALL P. POGUE, P.E. 84780 ON 02-01-2013. ALTERATION OF A SEALED DOCUMENT WITHOUT PROPER NOTIFICATION TO THE RESPONSIBLE ENGINEER IS AN OFFENSE UNDER THE TEXAS ENGINEERING PRACTICE ACT.

*RPP* 3-1-13



**POGUE**  
 ENGINEERING & DEVELOPMENT COMPANY, INC.  
 1512 BRAY CENTRAL DRIVE SUITE 100  
 MCKINNEY, TEXAS 75069  
 (214) 544-8880 PHONE  
 (214) 544-8882 FAX  
 www.PogueEngineering.com  
 TX BOARD PROF. ENGINEERS, CERT. #F-000481; TX BOARD PROF. LAND SURVEYING, CERT. 100421-00

**STORM SEWER PROFILE**  
 STONE CREEK RETAIL ADDITION  
 BLK A, LOT 4, STONE CREEK RETAIL ADD'N  
 W.T. DEWEESE SURVEY, ABSTRACT NO. 71  
 CITY OF ROCKWALL, TEXAS

SHEET NO.  
**C5.02**

STONE CREEK RETAIL ADDITION