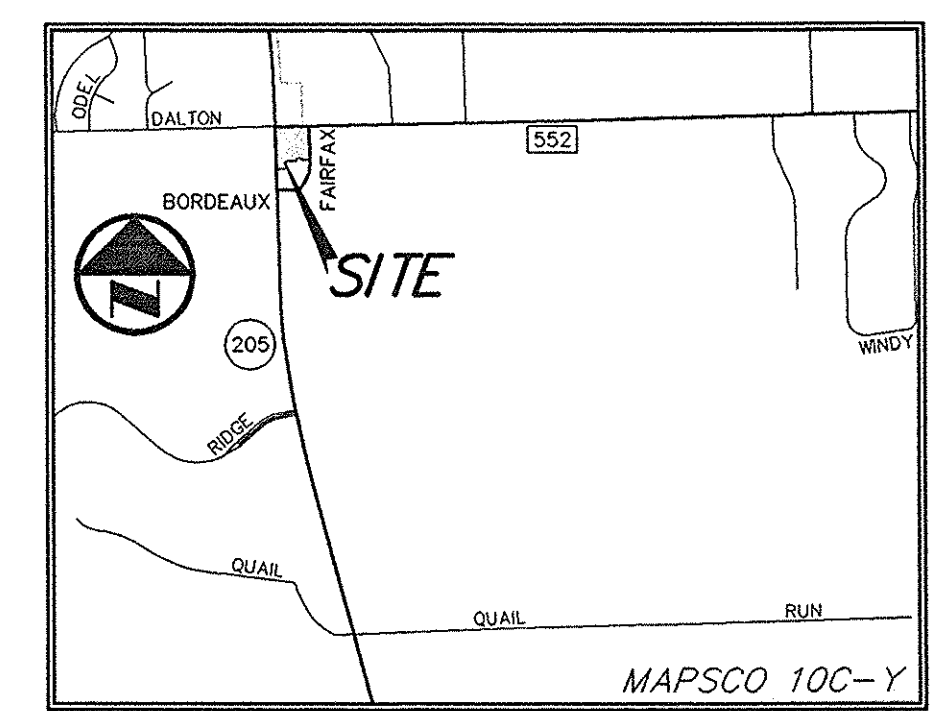
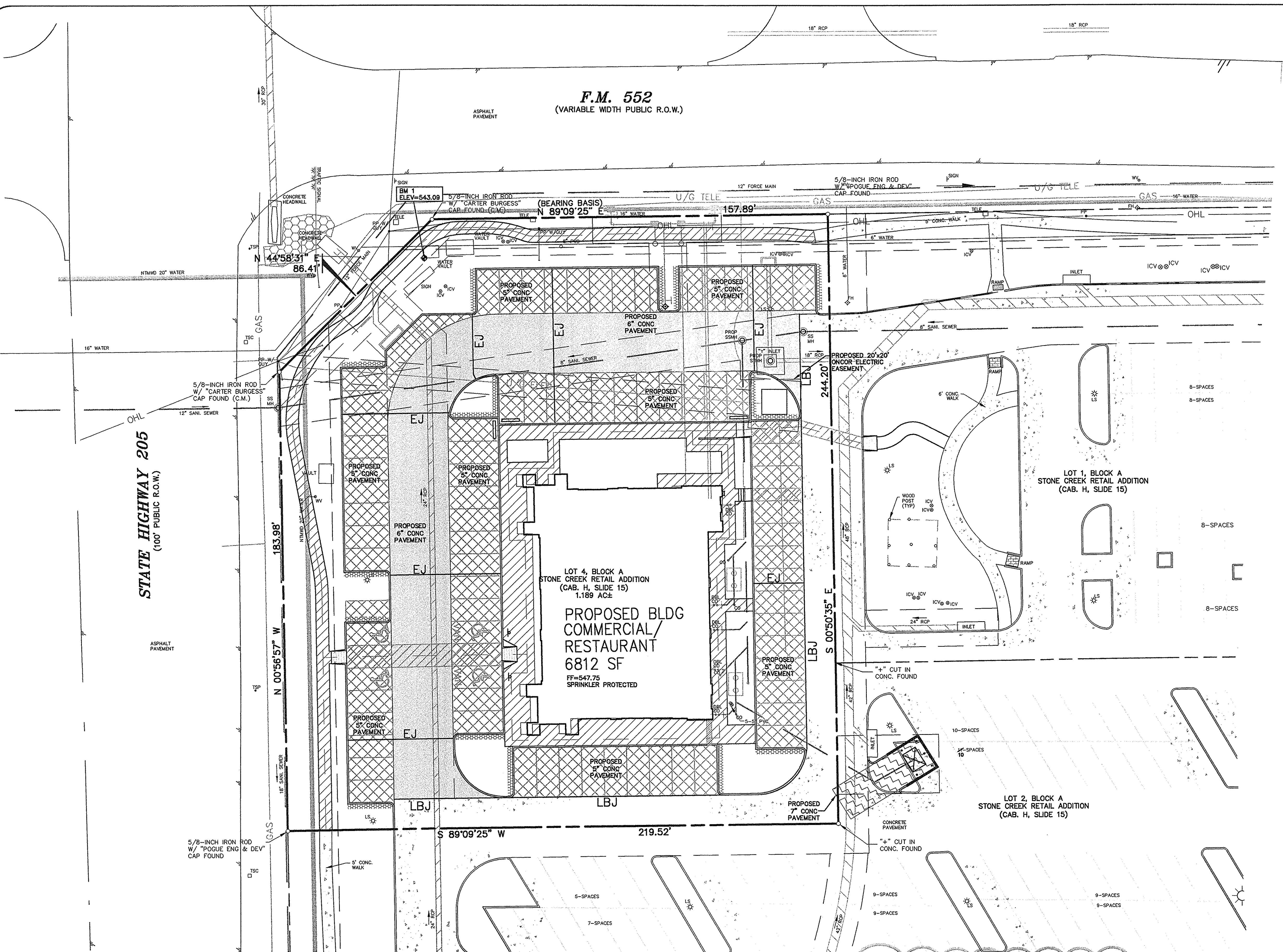
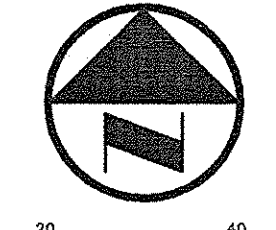


PAVING PLAN, 10/10/13, 3:58PM, STONE CREEK-BLOCK A, LOT 4 (DMS) 1393-12-073-PAVING PLAN.DWG
 © POGUE ENGINEERING & DEVELOPMENT COMPANY, INC. 2013. ALL RIGHTS RESERVED. THE ENGINEERING DESIGN, DETAIL AND ENGINEERING DRAWINGS FOR THIS PROJECT AND/OR OVERALL PROJECT ARE THE LEGAL PROPERTY OF POGUE ENGINEERING & DEVELOPMENT COMPANY, INC. THEIR USE FOR REPRODUCTION, CONSTRUCTION, OR DISTRIBUTION IS PROHIBITED UNLESS AUTHORIZED IN WRITING BY POGUE ENGINEERING & DEVELOPMENT COMPANY, INC.



VICINITY MAP
NOT TO SCALE



GRAPHIC SCALE IN FEET
SCALE: 1" = 20'

LEGEND

- B. BOLLARD
- EM. ELECTRIC METER
- PP. POWER POLE
- LS. LIGHT STANDARD
- WM. WATER METER
- WV. WATER VALVE
- ICV. IRRIGATION CONTROL VALVE
- FH. FIRE HYDRANT
- FDC. FIRE DEPARTMENT CONNECTION
- CO. CLEAN OUT
- MH. MANHOLE
- GM. GAS METER
- TSC. TRAFFIC SIGNAL CONTROL
- TSP. TRAFFIC SIGNAL POLE
- SIG. TRAFFIC SIGN
- TELE. TELEPHONE BOX
- TV. TV BOX
- FP. FLAG POLE
- L.A. LANDSCAPE AREA
- PROPERTY LINE
- O.H.L. O.H. POWER LINES
- U/G TELEF. U/G TELEPHONE LINES
- WATER. U/G WATER LINE
- GAS. U/G GAS LINE
- X- FENCE
- (C.M.) CONTROLLING MONUMENT
- SIR 5/8-INCH IRON ROD WITH "POGUE ENG & DEV" CAP SET
- EJ EXPANSION JOINT
- LBJ LONGITUDINAL BUTT JOINT

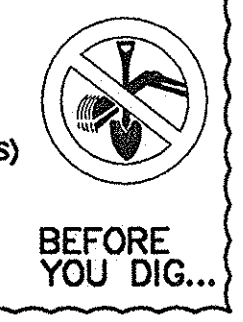
PAVEMENT LEGEND

- [Cross-hatch pattern] STANDARD PAVEMENT
- [Diagonal lines] FIRE LANE PAVEMENT
- [Dotted pattern] DUMPSTER PAD AND APRON
- [Horizontal lines] SIDEWALK

NOTE: FOR PAVEMENT DESIGN DETAILS, REFER TO SHEETS C1.03 AND C7.01.

NOTE: ALL DIMENSIONS ARE FROM BACK OF CURB TO BACK OF CURB, UNLESS OTHERWISE NOTED.

CAUTION!!
UNDERGROUND UTILITIES ARE LOCATED IN THIS AREA. 48 HOURS PRIOR TO ANY CONSTRUCTION ACTIVITIES, CONTACT LINE LOCATES FOR FRANCHISE UTILITY INFO. CALL BEFORE YOU DIG:
TEXAS EXCAVATION SAFETY SYSTEM (TESS) 1-800-344-8377
TEXAS ONE CALL SYSTEMS 1-800-245-4545
LONE STAR NOTIFICATION CENTER 1-800-689-8344 EXT. 5



BENCH MARK LIST:
BENCHMARK #1
SQUARE CUT FOUND AT SOUTHWEST CORNER OF WATER VAULT LOCATED AT THE SOUTHEAST CORNER OF THE INTERSECTION OF THE EAST RIGHT-OF-WAY LINE OF SH 205 AND THE SOUTH RIGHT-OF-WAY LINE OF FM 552.
ELEVATION = 443.09
BENCHMARK #2
CITY OF ROCKWALL MONUMENT (R010) FOUND.
ELEVATION = 524.788

FRANCHISE UTILITY NOTES:
1. TXU ENERGY CONSTRUCTION SERVICES - (800) 711-9112
2. ATMOS ENERGY (GAS) - 903-457-2092 - DINAH WOOD
3. AT&T (PHONE) - 903-457-2092 - DWAYNE WELLS

RECORD DRAWINGS:
IT WAS THE INTENT THAT THE IMPROVEMENTS SHOWN BE CONSTRUCTED ACCORDING TO THESE PLANS AS APPROVED BY THE CITY. THE LINES AND GRADES WERE SET ON THE GROUND FOR CONSTRUCTION ACCORDING TO SAID PLANS. THE CITY INSPECTED THE CONSTRUCTION. WE ARE NOT AWARE OF ANY CHANGES OR REVISIONS TO THESE PLANS DURING CONSTRUCTION OTHER THAN THOSE SHOWN. DATE: OCTOBER 10, 2013.

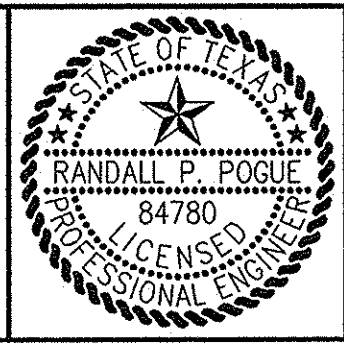
ADA ROUTE
NOTE: MAXIMUM SLOPE FOR ALL ADA PATHS 5% MAX. CROSS FALL IS 2% FOR THE FIRST FIVE FOOT FROM THE DOOR. A 2% SLOPE (MAX.) MUST BE MAINTAINED.

NO.	DESIGN	DRAWN	DATE	PI NUMBER
2	10-10-13	RPP	10-10-2013	1393-12-073
1	5-9-13	RND	10-10-2013	1393-12-073

PROJECT INFORMATION
STONE CREEK RETAIL ADDITION
BLOCK A, LOT 4, STONE CREEK RETAIL ADDITION
CITY OF ROCKWALL, TEXAS
W.T. DEWEESE SURVEY, ABSTRACT NO. 71
PROPOSED USE: RETAIL
ZONING: PD-70

OWNER/DEVELOPER
METROPLEX ACQUISITION FUND, L.P.
15150 PRESTON ROAD, SUITE 210
DALLAS, TEXAS 75248
MR. GREY STOGNER
(214) 343-4477 PHONE
(214) 340-2029 FAX

THE SEAL APPEARING ON THIS DOCUMENT WAS AUTHORIZED BY RANDALL P. POGUE, P.E. 04780 ON 02-07-2013. ALTERATION OF A SEALED DOCUMENT WITHOUT PROPER NOTIFICATION TO THE RESPONSIBLE ENGINEER IS AN OFFENSE UNDER THE TEXAS ENGINEERING PRACTICE ACT.



POGUE
ENGINEERING & DEVELOPMENT COMPANY, INC.
1512 BRAY CENTRAL DRIVE
SUITE 100
MCKINNEY, TEXAS 75069
TX BOARD PROF. ENGINEERS, CERT. #F-000481; TX BOARD PROF. LAND SURVEYING, CERT. 100421-00
(214) 544-8880 PHONE
(214) 544-8882 FAX
www.PogueEngineering.com

PAVING PLAN
STONE CREEK RETAIL ADDITION
BLK A, LOT 4, STONE CREEK RETAIL ADD'N
W.T. DEWEESE SURVEY, ABSTRACT NO. 71
CITY OF ROCKWALL, TEXAS

SHEET NO. C1.02