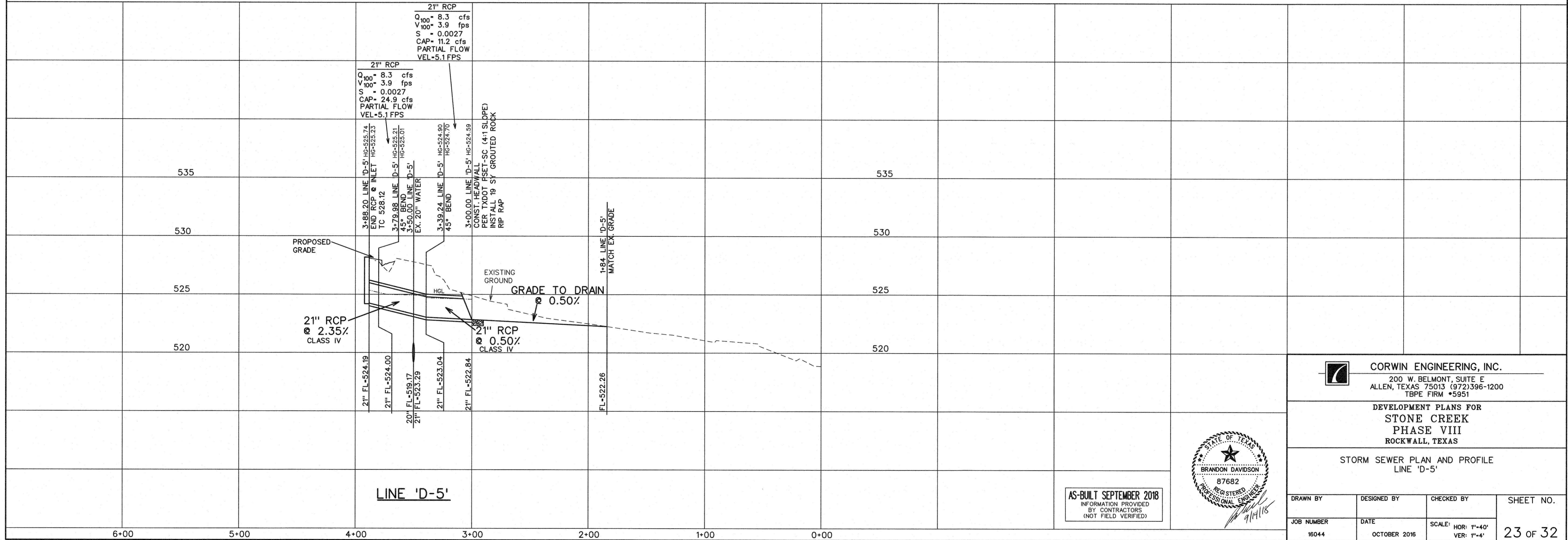


NOTE:
 THE CONTRACTOR SHALL CONTACT NTMWD ENGINEERING AT (972) 442-5405 AT LEAST 48 HOURS PRIOR TO PERFORMING WORK IN THE VICINITY OF THE NTMWD FACILITIES

LEGEND

- (B) - BLOCK LABEL
- (15) - INLET NUMBER
- (1) - CURVE NUMBER
- - SANITARY SEWER
- ⊕ - WATER
- ==== - PROPOSED STORM SEWER
- ==== - EXISTING STORM SEWER



CORWIN ENGINEERING, INC.
 200 W. BELMONT, SUITE E
 ALLEN, TEXAS 75013 (972) 396-1200
 TBPE FIRM #5951

DEVELOPMENT PLANS FOR
**STONE CREEK
 PHASE VIII**
 ROCKWALL, TEXAS

STORM SEWER PLAN AND PROFILE
 LINE 'D-5'



AS-BUILT SEPTEMBER 2018
 INFORMATION PROVIDED
 BY CONTRACTORS
 (NOT FIELD VERIFIED)

| | | | |
|------------|--------------|----------------------------------|-----------|
| DRAWN BY | DESIGNED BY | CHECKED BY | SHEET NO. |
| JOB NUMBER | DATE | SCALE: HOR: 1"=40' VER: 1"=4' | 23 of 32 |
| 16044 | OCTOBER 2018 | | |